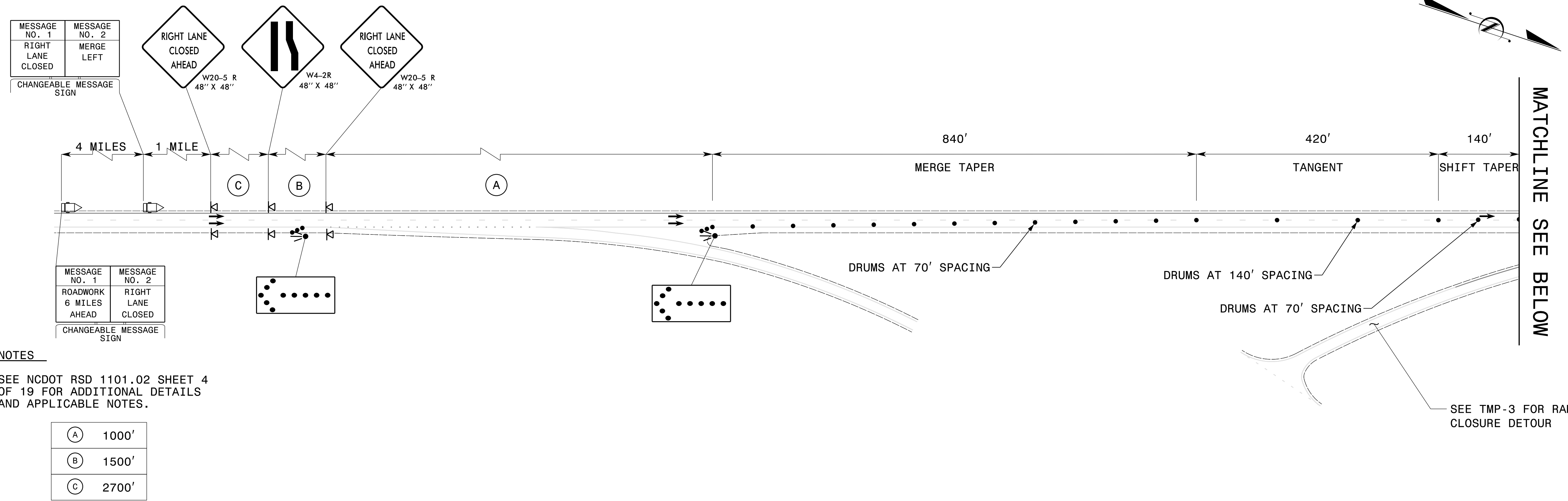


**- US 1 NORTHBOUND -
PHASE 1**



MESSAGE NO. 1	MESSAGE NO. 2
RIGHT LANE CLOSED	MERGE LEFT

CHANGEABLE MESSAGE SIGN

MESSAGE NO. 1	MESSAGE NO. 2
ROADWORK 6 MILES AHEAD	RIGHT LANE CLOSED

CHANGEABLE MESSAGE SIGN

NOTES

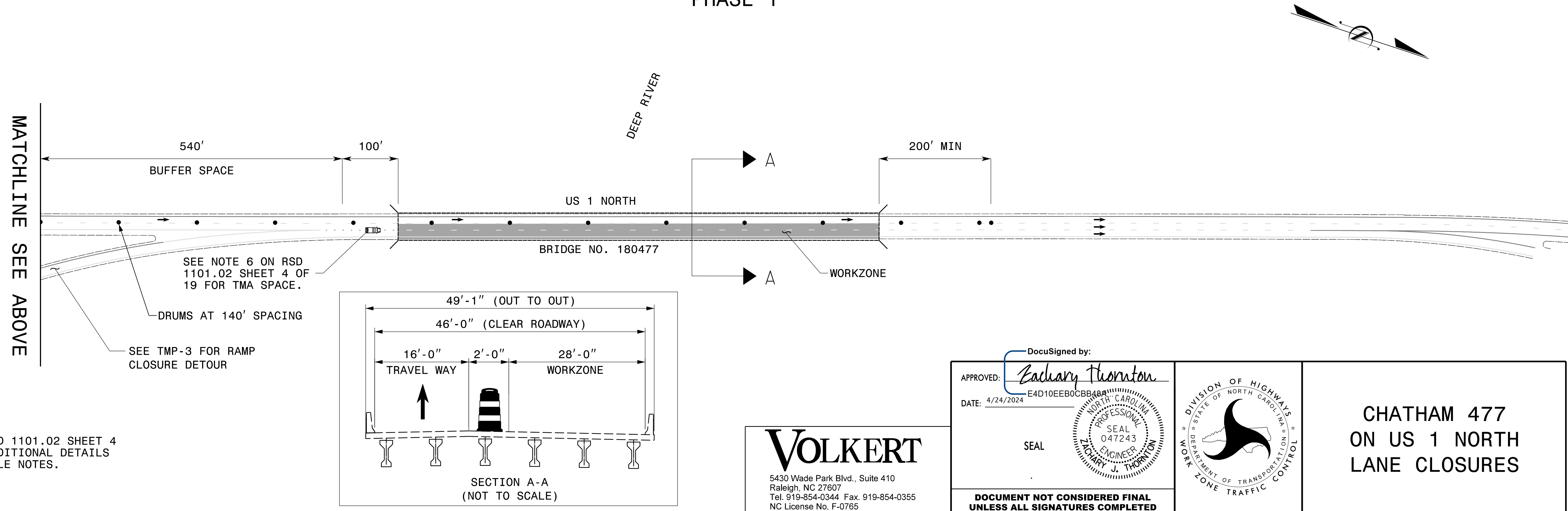
SEE NCDOT RSD 1101.02 SHEET 4 OF 19 FOR ADDITIONAL DETAILS AND APPLICABLE NOTES.

(A)	1000'
(B)	1500'
(C)	2700'

MATCHLINE SEE BELOW

SEE TMP-3 FOR RAMP CLOSURE DETOUR

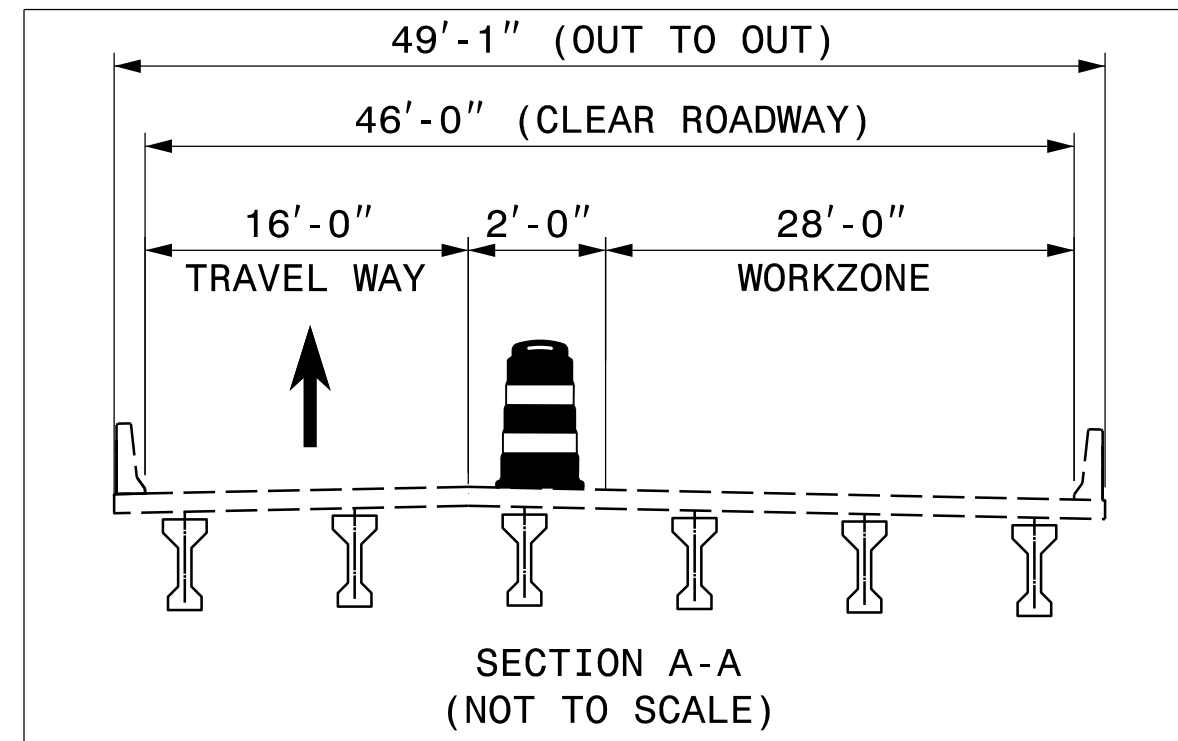
**- US 1 NORTHBOUND -
PHASE 1**



MATCHLINE SEE ABOVE

SEE NOTE 6 ON RSD 1101.02 SHEET 4 OF 19 FOR TMA SPACE.

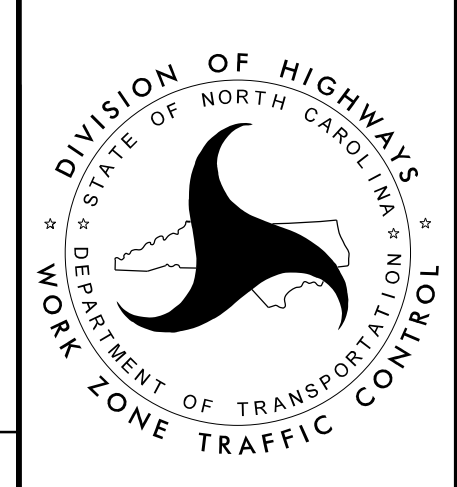
SEE TMP-3 FOR RAMP CLOSURE DETOUR



NOTES

SEE NCDOT RSD 1101.02 SHEET 4 OF 19 FOR ADDITIONAL DETAILS AND APPLICABLE NOTES.

DocuSigned by:
Calvary Thornton
APPROVED: *Calvary Thornton*
DATE: 4/24/2024
E4D10EEB0CBB8A
SEAL



**CHATHAM 477
ON US 1 NORTH
LANE CLOSURES**

VOLKERT
5430 Wade Park Blvd., Suite 410
Raleigh, NC 27607
Tel. 919-854-0344 Fax. 919-854-0355
NC License No. F-0765