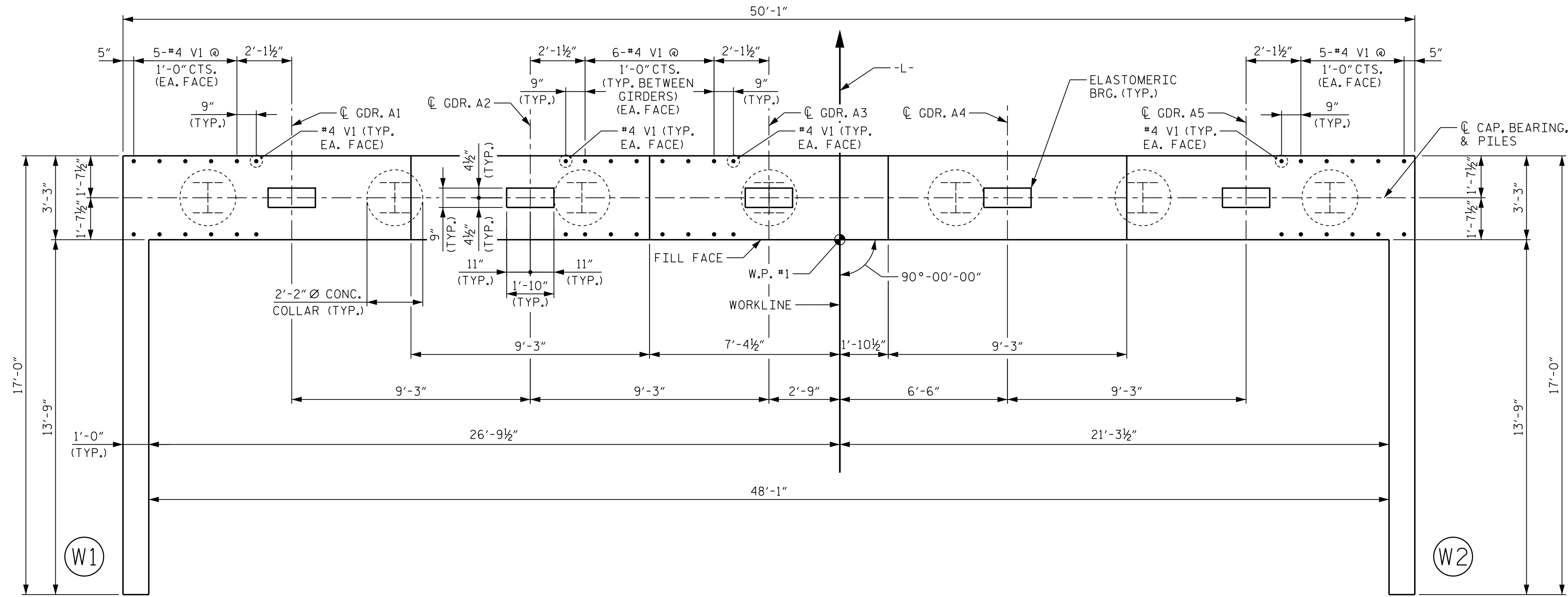
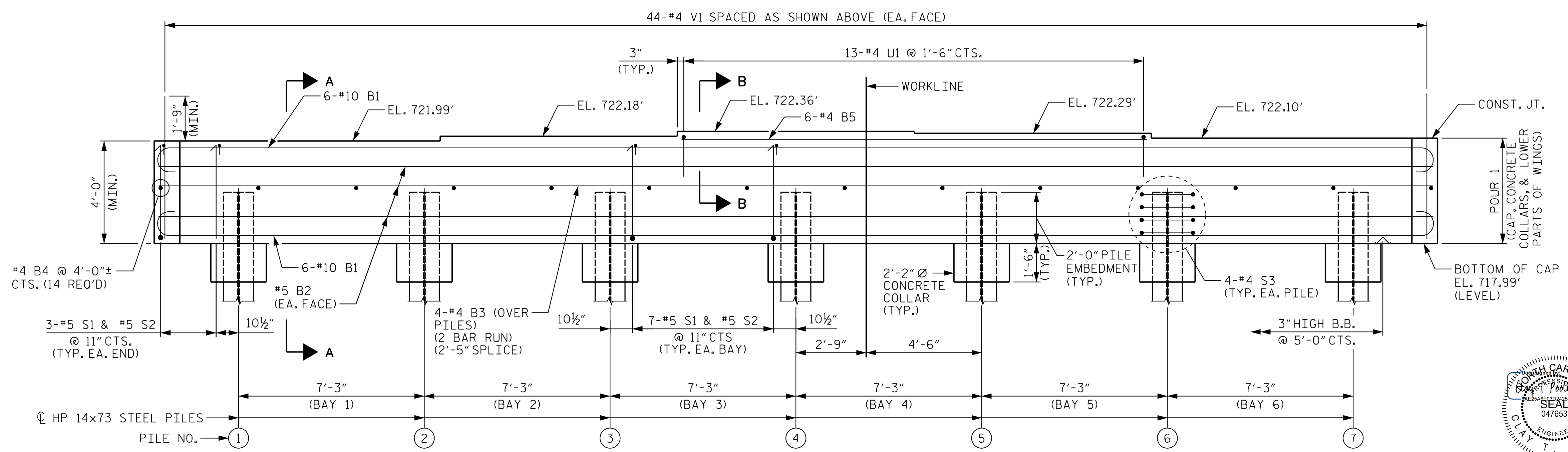


NOTES

FOR PILE SPLICE DETAILS, AND TEMPORARY DRAINAGE DETAILS, SEE SHEET 3 OF 3.
 FOR SECTION A-A AND PARTIAL SECTION B-B, SEE SHEET 3 OF 3.
 STIRRUPS IN CAP MAY BE SHIFTED AS NECESSARY TO CLEAR #4 V1 BARS.
 THE TOP SURFACE OF POUR 1 OF THE END BENT CAP AND WINGS, EXCLUDING THE BEARING AREA, SHALL BE RAKED TO A DEPTH OF 1/4".



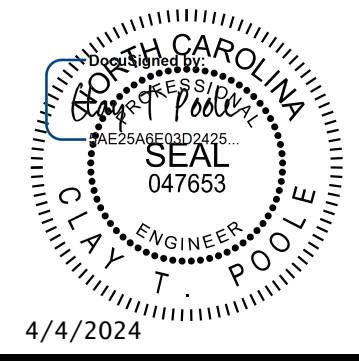
PLAN



ELEVATION

PROJECT NO. U-5108
 MECKLENBURG COUNTY
 STATION: 74+01.00 -L-

SHEET 1 OF 3



STATE OF NORTH CAROLINA
 DEPARTMENT OF TRANSPORTATION
 RALEIGH
 SUBSTRUCTURE
 END BENT 1
 PLAN AND ELEVATION

Kimley»Horn
 421 Fayetteville Street, Suite 600
 Raleigh, NC 27601-1772
 Phone (919) 677-2000
 NC LICENSE # F-0102

REVISIONS						SHEET NO.
NO.	BY:	DATE:	NO.	BY:	DATE:	S-25
1			3			TOTAL SHEETS
2			4			33

**DOCUMENT NOT CONSIDERED FINAL
 UNLESS ALL SIGNATURES COMPLETED**

K:\BIDI-Structures\Bridges\NC\01036359 - U-5108\Gcd\Gcd\N05108_SML.E1.591403.dgn

DRAWN BY: J. I. KIMBLE DATE: 10/2023
 CHECKED BY: T. H. ORR DATE: 10/2023
 DESIGN ENGINEER OF RECORD: C. T. POOLE DATE: 10/2023