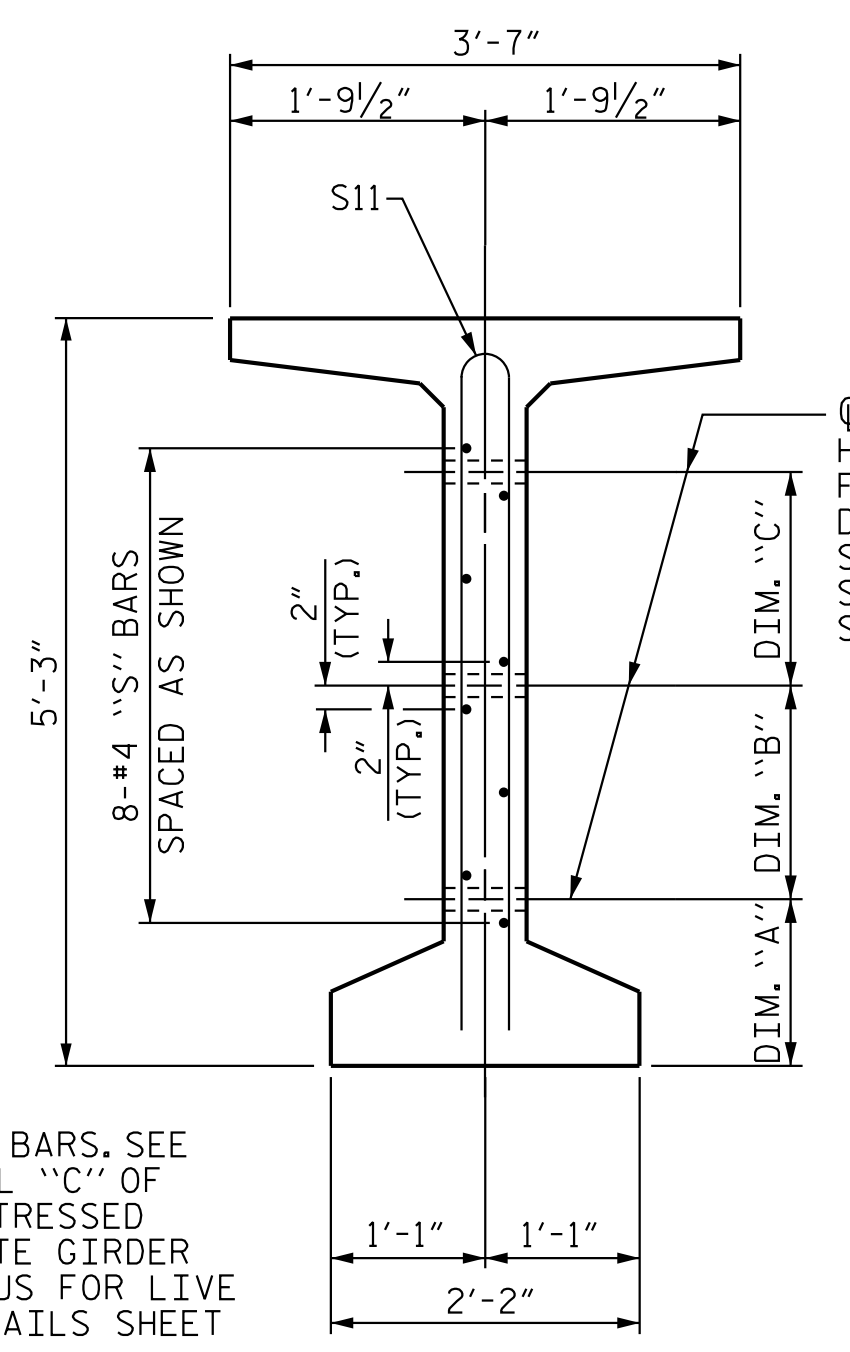


SECTION A-A



SECTION C-C

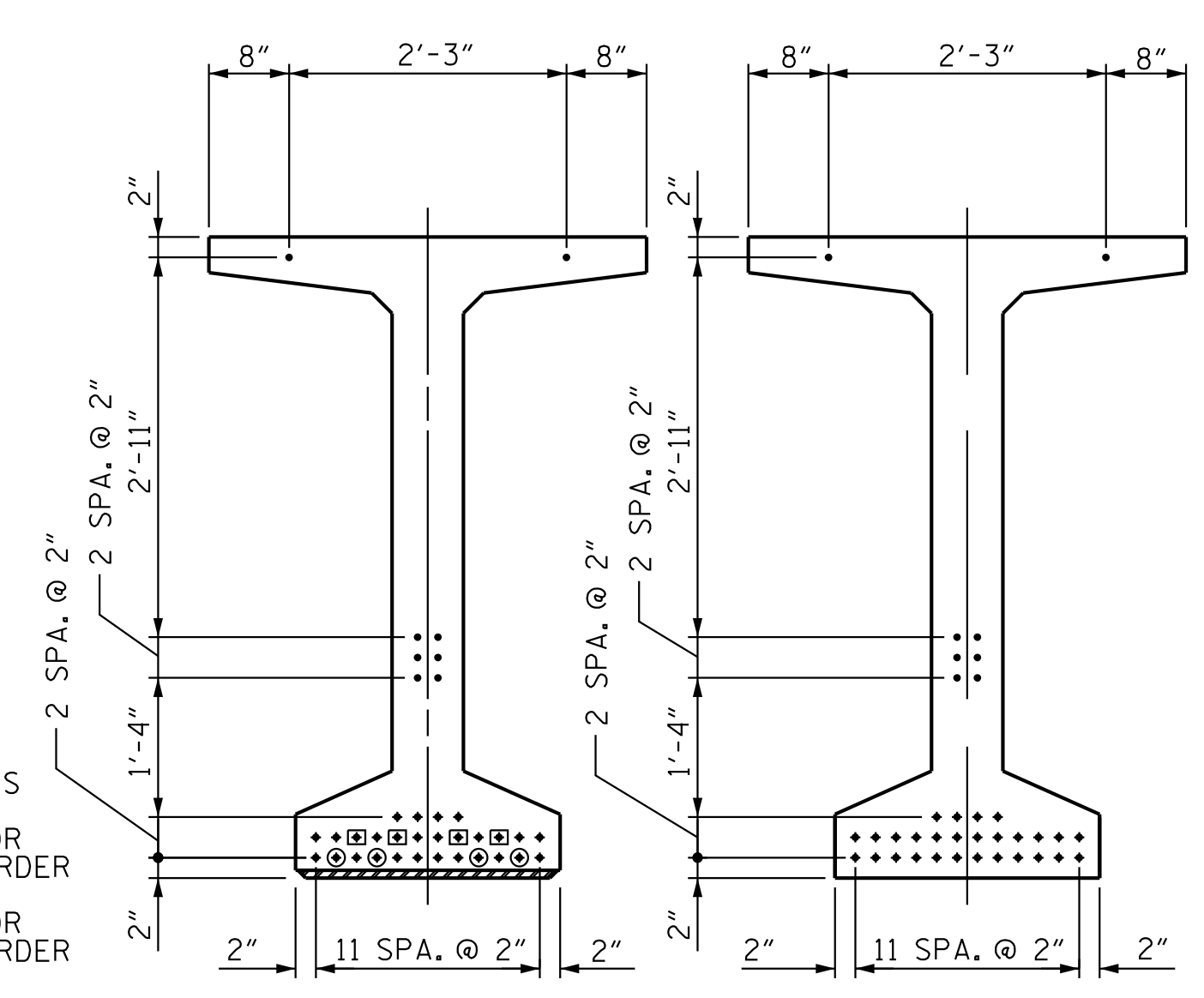
\* FOR S7 BARS, SEE  
DETAIL "C" OF  
PRESTRESSED  
CONCRETE GIRDER  
CONTINUOUS FOR LIVE  
LOAD DETAILS SHEET

(S1, S6 AND S9 BARS NOT SHOWN)

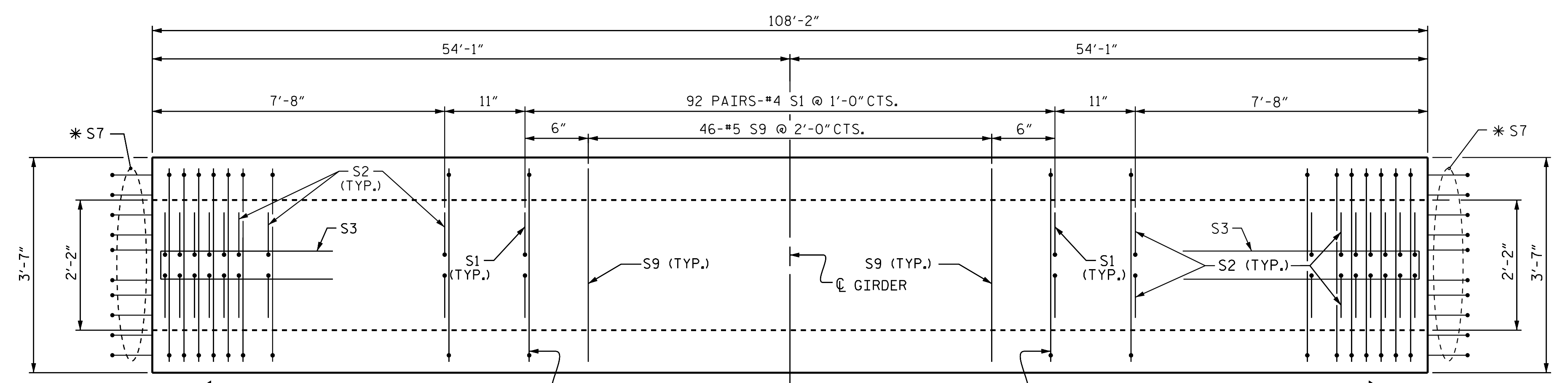
1/2" Ø FORMED  
HOLE. SEE ELEVATION  
FOR LOCATION. FOR  
DIM. "A", "B" & "C",  
SEE "INTERMEDIATE  
STEEL DIAPHRAGMS"  
SHEET.)

DEBONDING LEGEND

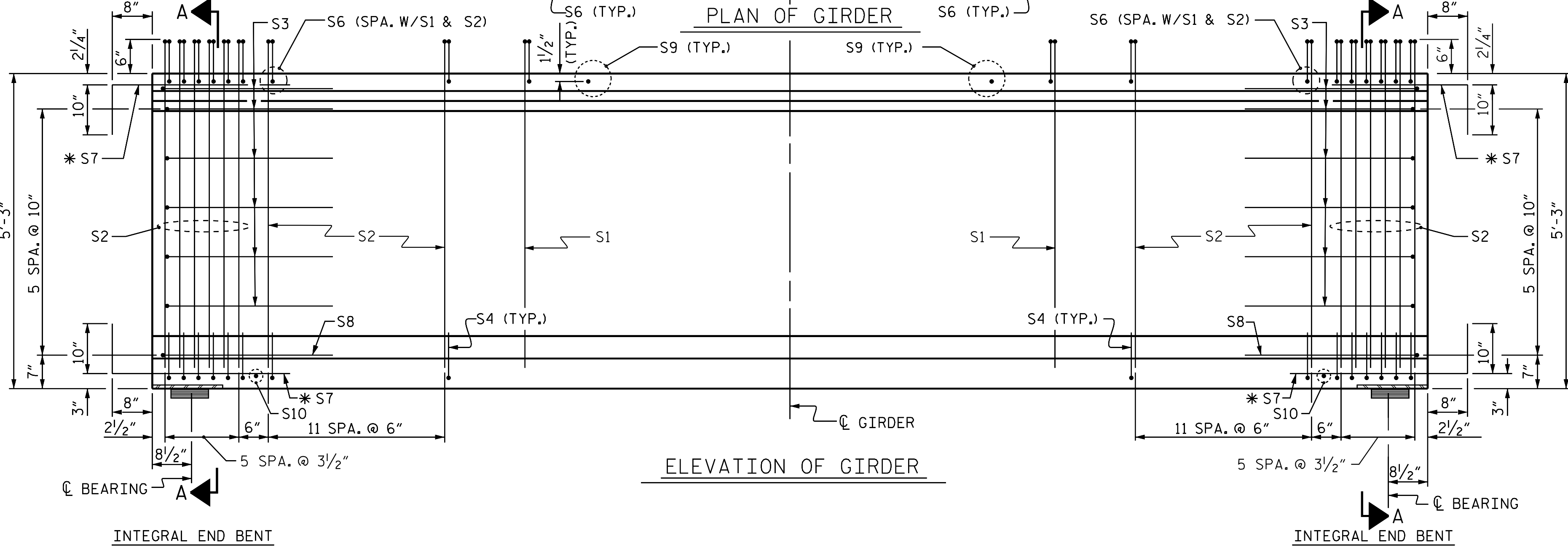
- FULLY BONDED STRANDS
- STRANDS DEBONDED FOR 4'-0" FROM END OF GIRDER
- STRANDS DEBONDED FOR 8'-0" FROM END OF GIRDER



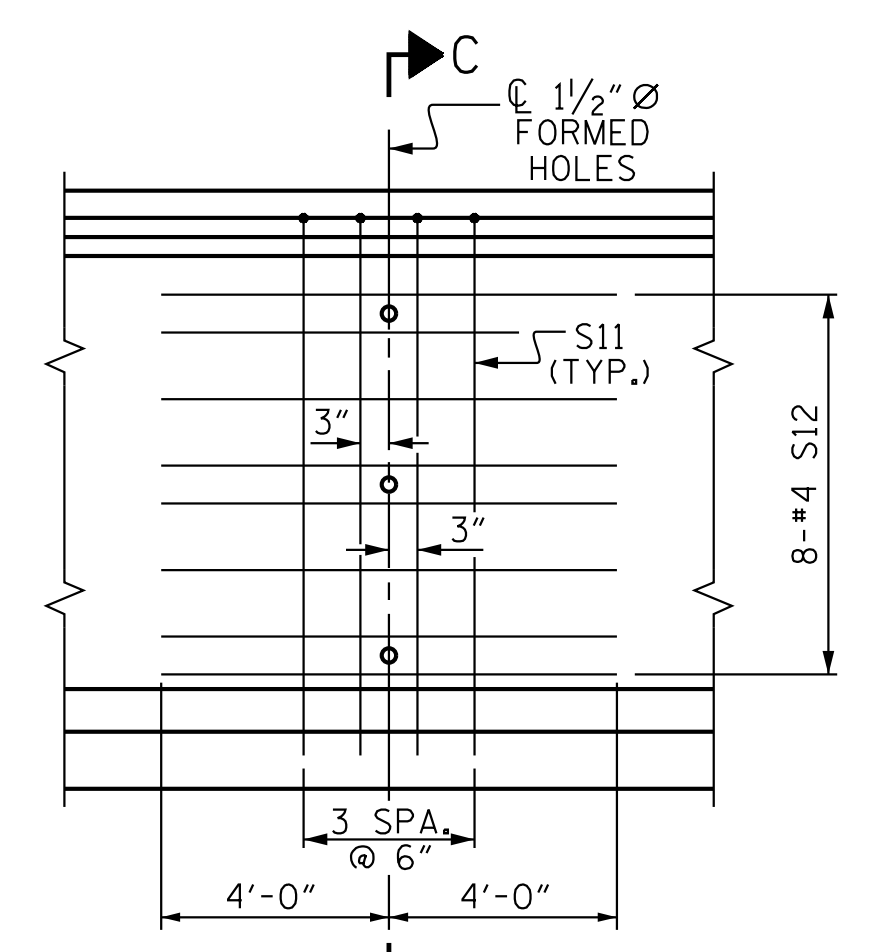
AT END OF GIRDER AT C OF GIRDER  
0.6" Ø LOW RELAXATION STRAND LAYOUT



PLAN OF GIRDER



ELEVATION OF GIRDER

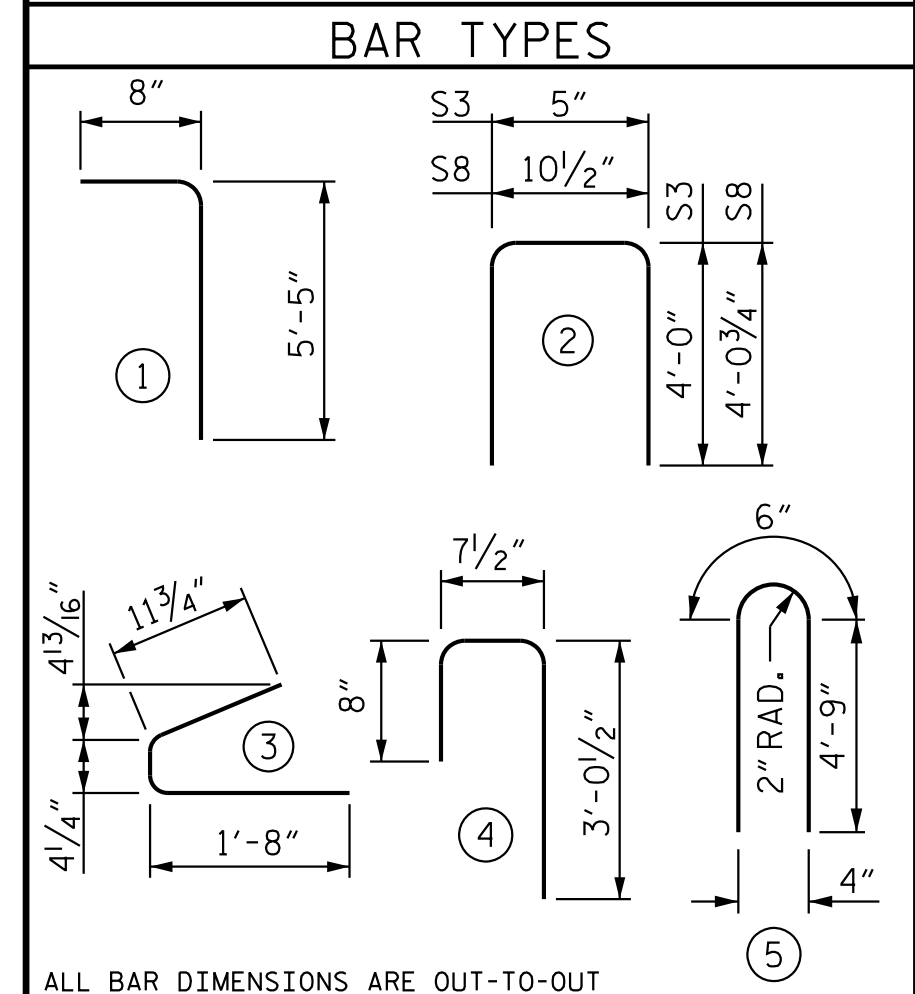


PARTIAL ELEVATION  
SHOWING INTERMEDIATE STEEL DIAPHRAGM  
REINFORCING STEEL FOR ALL GIRDERS

0.6" Ø L. R. GRADE 270 STRANDS		
AREA (SQUARE INCHES)	ULTIMATE STRENGTH (LBS. PER STRAND)	APPLIED PRESTRESS (LBS. PER STRAND)
0.217	58,600	43,950

REINFORCING STEEL FOR ONE GDR					
BAR	NUMBER	SIZE	TYPE	LENGTH	WEIGHT
S1	184	#4	1	6'-1"	748
S2	72	#5	1	6'-1"	457
S3	12	#4	2	8'-5"	67
S4	72	#4	3	3'-0"	144
S6	256	#5	4	4'-4"	1,157
* S7	40	#5	STR	3'-8"	153
S8	2	#5	2	9'-0"	19
S9	46	#5	STR	3'-3"	156
S10	2	#3	STR	1'-10"	1
S11	8	#5	5	10'-0"	83
S12	16	#4	STR	8'-0"	86

\* NOTE: S7 BARS SHALL BE BENT BEFORE SHIPMENT. HEAT BENDING SHALL NOT BE ALLOWED.



ALL BAR DIMENSIONS ARE OUT-TO-OUT

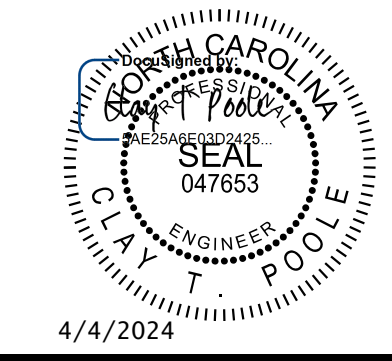
QUANTITIES FOR ONE GIRDER			
REINFORCING STEEL	8,000 PSI CONCRETE		0.6" Ø L.R. STRANDS
	LB.	C.Y.	No.
	3,071	21.4	36

GIRDERS REQUIRED		
NUMBER	LENGTH	TOTAL LENGTH
5	108'-2"	540'-10"

PROJECT NO. U-5108  
MECKLENBURG COUNTY  
STATION: 74+01.00 -L-

SHEET 1 OF 3

STATE OF NORTH CAROLINA  
DEPARTMENT OF TRANSPORTATION  
RALEIGH  
STANDARD  
63" PRESTRESSED CONCRETE  
MODIFIED BULB TEE  
CONTINUOUS FOR LIVE LOAD



**Kimley-Horn**  
421 Fayetteville Street, Suite 600  
Raleigh, NC 27601-1772  
Phone (919) 677-2000 NC LICENSE # F-0102

REVISIONS						SHEET NO. S-13
NO.	BY:	DATE:	NO.	BY:	DATE:	
1			3			TOTAL SHEETS 33
2			4			

**DOCUMENT NOT CONSIDERED FINAL  
UNLESS ALL SIGNATURES COMPLETED**

This document, together with the concepts and designs presented herein, is an integral part of the project. It is not to be used for any other project without written authorization and approval by Kimley-Horn and Associates, Inc. shall be without liability to Kimley-Horn and Associates, Inc.  
Copyright Kimley-Horn and Associates, Inc., 2024

2/28/2024 K:\BID\Structures\Bridges\NC\101036359 - U-5108\Gcd\Gdr\U5108\_SML.G1\_591403.dgn

ASSEMBLED BY : J. L. KIMBLE	DATE : 10/2023
CHECKED BY : T. H. ORR	DATE : 10/2023
DRAWN BY : EEM 2/6/97	REV. 6/13 MAA/GM
CHECKED BY : VAP 2/6/97	REV. 1/15 MAA/TMG
	REV. 12/17 MAA/THC