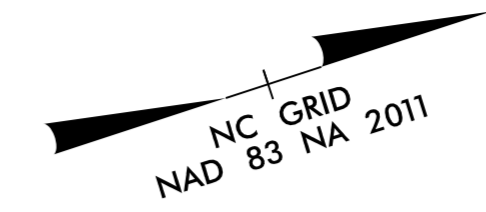
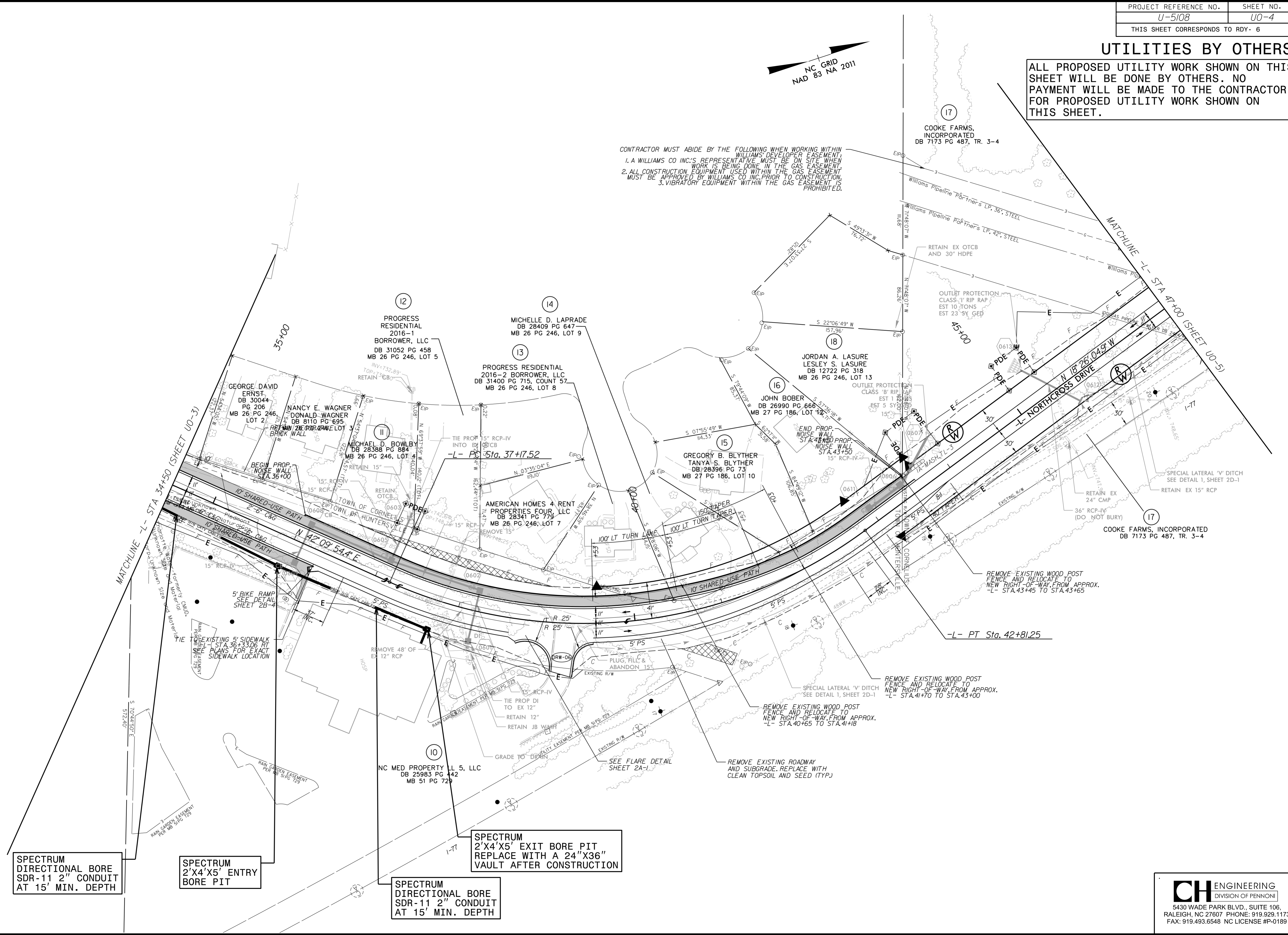


UTILITIES BY OTHERS

ALL PROPOSED UTILITY WORK SHOWN ON THIS SHEET WILL BE DONE BY OTHERS. NO PAYMENT WILL BE MADE TO THE CONTRACTOR FOR PROPOSED UTILITY WORK SHOWN ON THIS SHEET.



CONTRACTOR MUST ABIDE BY THE FOLLOWING WHEN WORKING WITHIN WILLIAMS DEVELOPER EASEMENT:
 1. A WILLIAMS CO INC'S REPRESENTATIVE MUST BE ON SITE WHEN WORK IS BEING DONE IN THE GAS EASEMENT.
 2. ALL CONSTRUCTION EQUIPMENT USED WITHIN THE GAS EASEMENT MUST BE APPROVED BY WILLIAMS CO INC. PRIOR TO CONSTRUCTION.
 3. VIBRATORY EQUIPMENT WITHIN THE GAS EASEMENT IS PROHIBITED.



SPECTRUM DIRECTIONAL BORE SDR-11 2" CONDUIT AT 15' MIN. DEPTH

SPECTRUM 2'X4'X5' ENTRY BORE PIT

SPECTRUM DIRECTIONAL BORE SDR-11 2" CONDUIT AT 15' MIN. DEPTH

SPECTRUM 2'X4'X5' EXIT BORE PIT REPLACE WITH A 24"X36" VAULT AFTER CONSTRUCTION

8/17/99
 2/5/2024
 C:\Users\james\OneDrive\Engineering\UBO\ProJ\U5108-ut.l.rdy6_U004_psh.dgn