

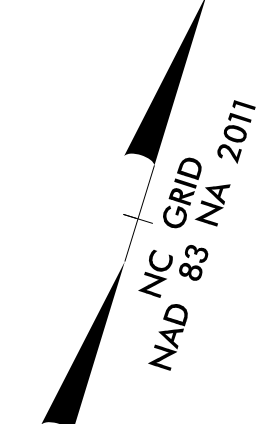
PRIOR TO ANY WATER LINE CONSTRUCTION, CONTRACTOR SHALL CONFIRM
PIEDMONT NATURAL GAS (PNG) COMPLETELY RETIRED BOTH 10-INCH TRANSMISSION
GAS MAINS AS SHOWN ON THE EXISTING SURVEY, AND ALSO CONFIRM PNG INSTALLED
NEW DISTRIBUTION GAS MAINS AT THE APPROXIMATE DEPTHS AS SHOWN PER PROFILE
-W2- ON SHEET UC-17. CONTRACTOR SHALL CONTACT DAREN JONES AT 704-361-3442 OR
BRYAN NIXON AT 704-214-3681 AT LEAST ONE WEEK PRIOR TO ANY WATER LINE CONSTRUCTION.

NOTE:
**THE ESTIMATED QUANTITY OF DUCTILE IRON
WATER PIPE FITTINGS ON THIS PLAN SHEET
IS 8,164 POUNDS. THE ACTUAL QUANTITY
AND TYPE OF FITTINGS WILL VARY BASED ON
FIELD CONDITIONS.**

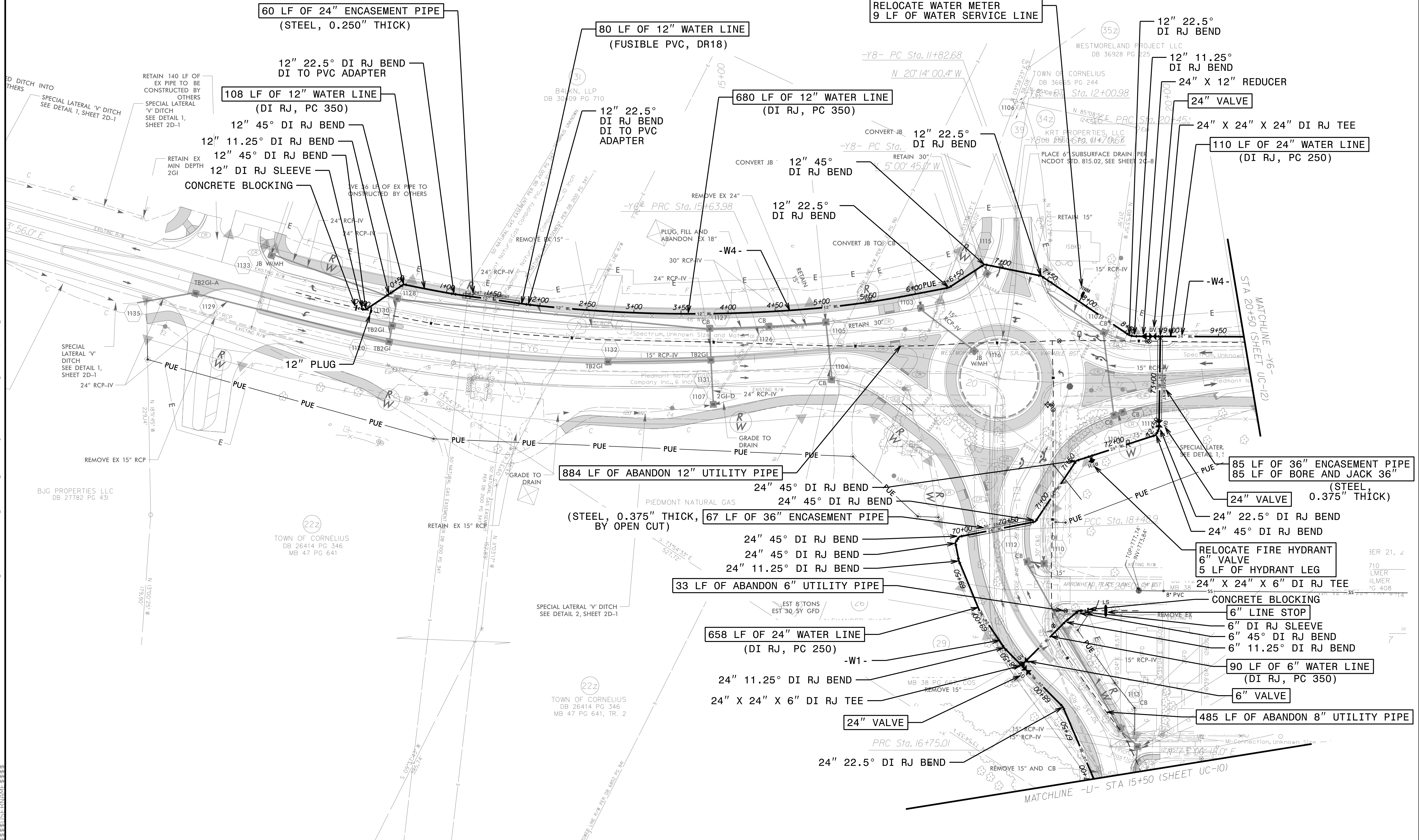
HINDE ENGINEERING
License No. C-2639
10815 Sikes Place, Suite 210 Charlotte, NC 28277

**DOCUMENT NOT CONSIDERED FINAL
UNLESS ALL SIGNATURES COMPLETED**

PROJECT REFERENCE NO.		SHEET NO.	
U-5108		UC-11	
DESIGNED BY:	JKC		UTILITY CONSTRUCTION PLANS ONLY
DRAWN BY:	JNA		
CHECKED BY:	JKC		
APPROVED BY:	CLS		
REVISED:			
NORTH CAROLINA DEPARTMENT OF TRANSPORTATION		UTILITIES ENGINEERING SEC. PHONE: (919) 707-6690 FAX: (919) 250-4151	



UTILITY CONSTRUCTION



26-MAR-2024 09:25:11
C:\Users\jclark\OneDrive\Documents\Projects\2018\A2018401.00_NCDOT_U-5108\Design\Utilities\Engineering\UC-Proj\U-5108_Ut_rdy\U-5108_Ut_rdy.dgn
U-5108_Ut_rdy.dgn