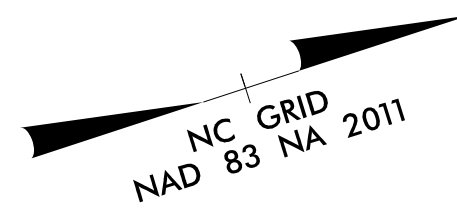


**NOTE:**  
THE ESTIMATED QUANTITY OF DUCTILE IRON WATER PIPE FITTINGS ON THIS PLAN SHEET IS 12,512 POUNDS. THE ACTUAL QUANTITY AND TYPE OF FITTINGS WILL VARY BASED ON FIELD CONDITIONS.

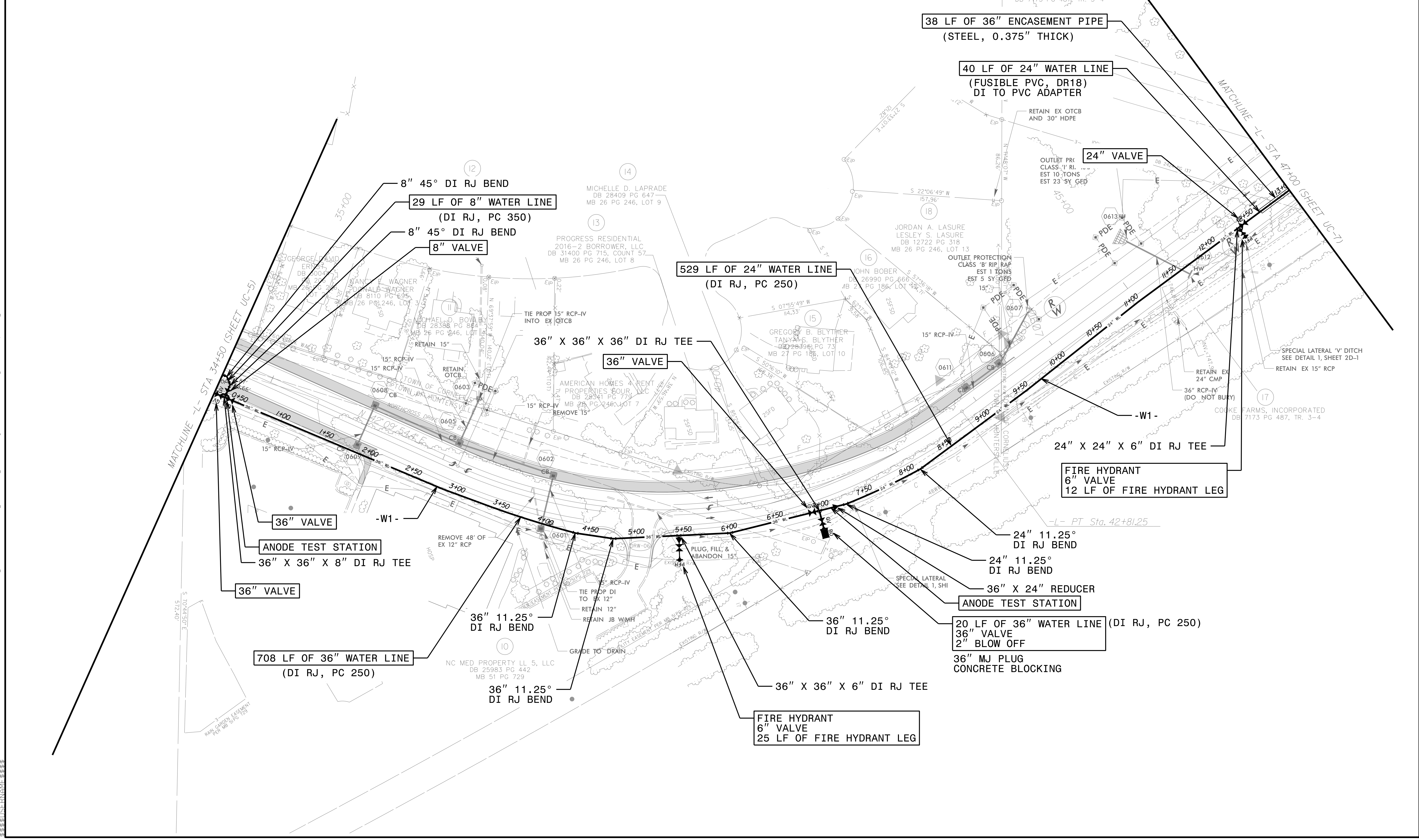


**HINDE ENGINEERING**  
License No. C-2639  
10815 Sikes Place, Suite 210 Charlotte, NC 28277

**DOCUMENT NOT CONSIDERED FINAL  
UNLESS ALL SIGNATURES COMPLETED**

PROJECT REFERENCE NO.	SHEET NO.
U-5108	UC-6
DESIGNED BY: JKC	
DRAWN BY: JNA	
CHECKED BY: JKC	
APPROVED BY: CLS	
REVISED:	
NORTH CAROLINA DEPARTMENT OF TRANSPORTATION	3/6/2024
UTILITIES ENGINEERING SEC. PHONE: (919) 707-6690 FAX: (919) 250-4151	UTILITY CONSTRUCTION PLANS ONLY

### UTILITY CONSTRUCTION



C:\MAR-2024\_09\PROJECTS\2018\A2018401\001\NCDDOT\_U-5108\Design\Utilities\Engineering\UC-Proj\U-5108\_Ut\_rdyf6\_UC06\_psh.dgn