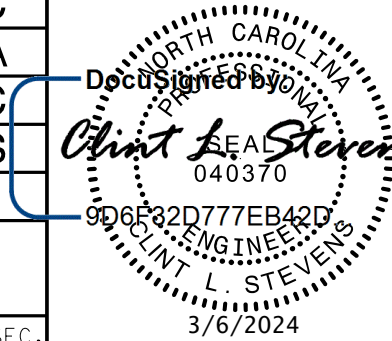
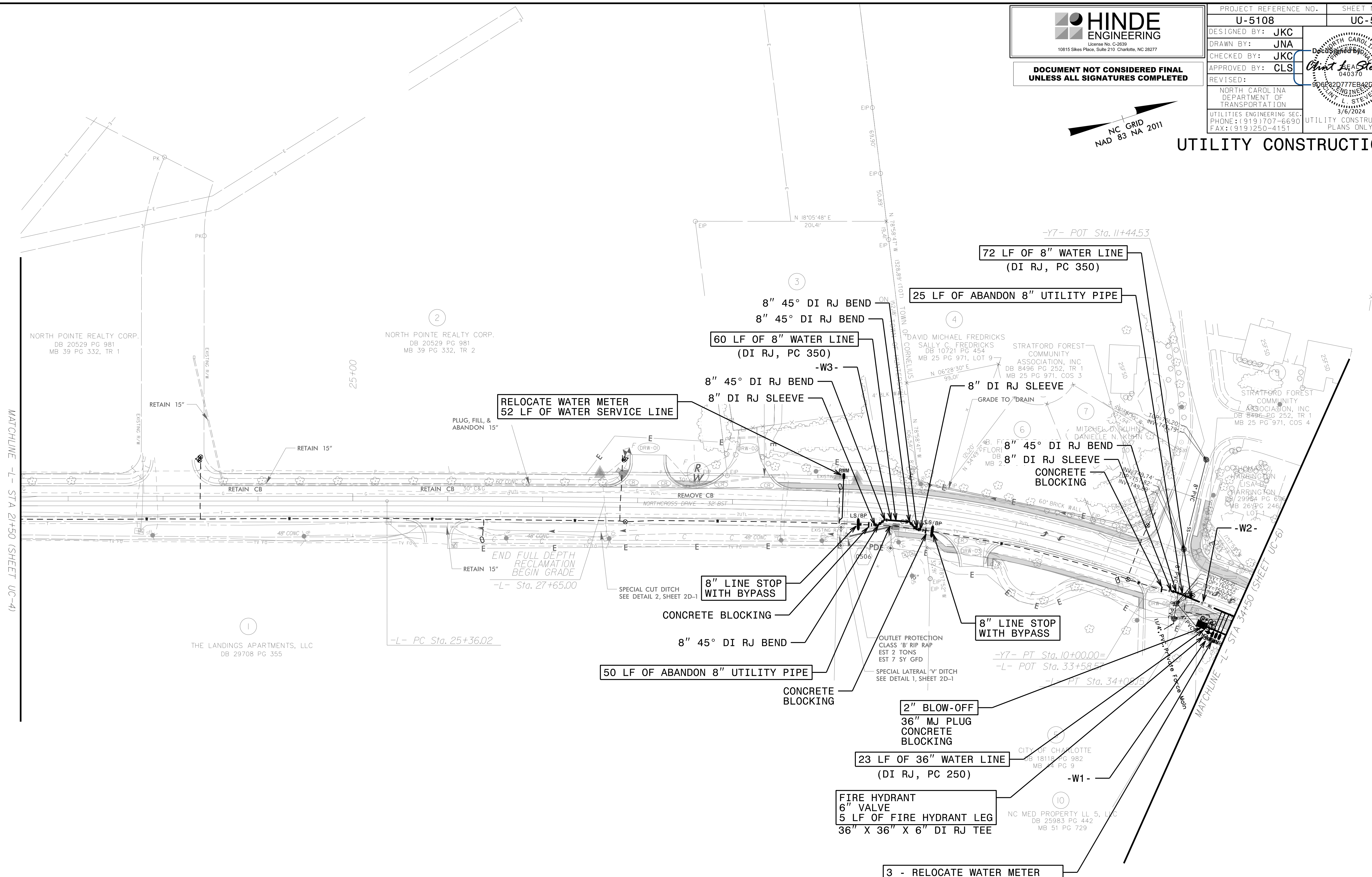




HINDE ENGINEERING
 License No. C-2639
 10815 Sikes Place, Suite 210 Charlotte, NC 28277

**DOCUMENT NOT CONSIDERED FINAL
 UNLESS ALL SIGNATURES COMPLETED**

PROJECT REFERENCE NO. U-5108	SHEET NO. UC-5
DESIGNED BY: JKC	
DRAWN BY: JNA	
CHECKED BY: JKC	NORTH CAROLINA DEPARTMENT OF TRANSPORTATION UTILITIES ENGINEERING SEC. PHONE: (919) 707-6690 FAX: (919) 250-4151
APPROVED BY: CLS	
REVISED:	
UTILITY CONSTRUCTION PLANS ONLY	



NOTE:
 THE ESTIMATED QUANTITY OF DUCTILE IRON WATER PIPE FITTINGS ON THIS PLAN SHEET IS 3,542 POUNDS. THE ACTUAL QUANTITY AND TYPE OF FITTINGS WILL VARY BASED ON FIELD CONDITIONS.

2024-MAR-20 09:56:55 C:\Users\jstevens\Documents\Projects\2018\A2018401\00_NCDDOT_U-5108\Design\Utilities\Engineering\UC-Proj\U-5108_Ut_rdy5_UC05_psh.dgn
 11/18/2024 11:18:58 AM
 11/18/2024 11:18:58 AM