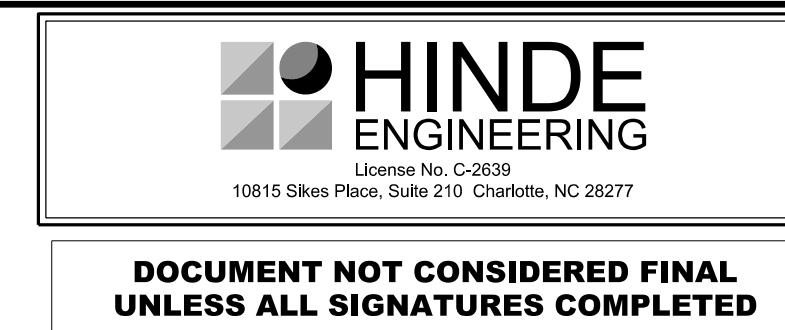


UTILITY CONSTRUCTION



**DOCUMENT NOT CONSIDERED FINAL
UNLESS ALL SIGNATURES COMPLETED**

PROJECT REFERENCE NO.	SHEET NO.
U-5108	UC-3
DESIGNED BY: JKC	
DRAWN BY: JNA	
CHECKED BY: JKC	
APPROVED BY: CLS	
REVISED:	
NORTH CAROLINA DEPARTMENT OF TRANSPORTATION	3/6/2024
UTILITIES ENGINEERING SEC. PHONE: (919) 707-6690 FAX: (919) 250-4151	UTILITY CONSTRUCTION PLANS ONLY

GENERAL NOTES:

1. THE PROPOSED UTILITY CONSTRUCTION SHALL MEET THE APPLICABLE REQUIREMENTS OF THE NC DEPARTMENT OF TRANSPORTATION'S "STANDARD SPECIFICATIONS FOR ROADS AND STRUCTURES" DATED JANUARY 2024.
2. THE EXISTING WATER AND SEWER FACILITIES BELONG TO CHARLOTTE WATER.
3. ALL WATER LINES TO BE INSTALLED WITHIN COMPLIANCE OF THE RULES AND REGULATIONS OF THE NORTH CAROLINA DEPARTMENT OF ENVIRONMENTAL QUALITY, DIVISION OF WATER RESOURCES, PUBLIC WATER SUPPLY SECTION. ALL SEWER LINES TO BE INSTALLED WITHIN COMPLIANCE OF THE RULES AND REGULATIONS OF THE NORTH CAROLINA DEPARTMENT OF ENVIRONMENT QUALITY, DIVISION OF WATER RESOURCES, WATER QUALITY SECTION. PERFORM ALL WORK IN ACCORDANCE WITH THE APPLICABLE PLUMBING CODES.
4. THE UTILITY OWNER OWNS THE EXISTING UTILITY FACILITIES AND WILL OWN THE NEW UTILITY FACILITIES AFTER ACCEPTANCE BY THE DEPARTMENT. THE DEPARTMENT OWNS THE CONSTRUCTION CONTRACT AND HAS ADMINISTRATIVE AUTHORITY. COMMUNICATIONS AND DECISIONS BETWEEN THE CONTRACTOR AND UTILITY OWNER ARE NOT BINDING UPON THE DEPARTMENT OR THIS CONTRACT UNLESS AUTHORIZED BY THE ENGINEER. AGREEMENTS BETWEEN THE UTILITY OWNER AND CONTRACTOR FOR THE WORK THAT IS NOT PART OF THIS CONTRACT OR IS SECONDARY TO THIS CONTRACT ARE ALLOWED, BUT ARE NOT BINDING UPON THE DEPARTMENT.
5. PROVIDE ACCESS FOR THE DEPARTMENT PERSONNEL AND THE OWNER'S REPRESENTATIVES TO ALL PHASES OF CONSTRUCTION. NOTIFY DEPARTMENT PERSONNEL AND THE UTILITY OWNER TWO WEEKS PRIOR TO COMMENCEMENT OF ANY WORK AND ONE WEEK PRIOR TO SERVICE INTERRUPTION. KEEP UTILITY OWNERS' REPRESENTATIVES INFORMED OF WORK PROGRESS AND PROVIDE OPPORTUNITY FOR INSPECTION OF CONSTRUCTION AND TESTING.

6. THE PLANS DEPICT THE BEST AVAILABLE INFORMATION FOR THE LOCATION, SIZE, AND TYPE OF MATERIAL FOR ALL EXISTING UTILITIES. MAKE INVESTIGATIONS FOR DETERMINING THE EXACT LOCATION, SIZE, AND TYPE MATERIAL OF THE EXISTING FACILITIES AS NECESSARY FOR THE CONSTRUCTION OF THE PROPOSED UTILITIES AND FOR AVOIDING DAMAGE TO EXISTING FACILITIES. REPAIR ANY DAMAGE INCURRED TO EXISTING FACILITIES TO THE ORIGINAL OR BETTER CONDITION AT NO ADDITIONAL COST TO THE DEPARTMENT.
7. MAKE FINAL CONNECTIONS OF THE NEW WORK TO THE EXISTING SYSTEM WHERE INDICATED ON THE PLANS, AS REQUIRED TO FIT THE ACTUAL CONDITIONS, OR AS DIRECTED.
8. MAKE CONNECTIONS BETWEEN EXISTING AND PROPOSED UTILITIES AT TIMES MOST CONVENIENT TO THE PUBLIC, WITHOUT ENDANGERING THE UTILITY SERVICE, AND IN ACCORDANCE WITH THE UTILITY OWNER'S REQUIREMENTS. MAKE CONNECTIONS ON WEEKENDS, AT NIGHT, AND ON HOLIDAYS IF NECESSARY.
9. ALL UTILITY MATERIALS SHALL BE APPROVED PRIOR TO DELIVERY TO THE PROJECT. SEE 1500-7, " SUBMITTALS AND RECORDS" IN SECTION 1500 OF THE STANDARD SPECIFICATIONS.

PROJECT SPECIFIC NOTES:

1. ALL 12-INCH AND SMALLER DIAMETER PIPE SHALL BE DUCTILE IRON RESTRAINED JOINT PRESSURE CLASS 350, UNLESS OTHERWISE NOTED ON THE UTILITY CONSTRUCTION PLANS.
2. ALL 16-INCH AND LARGER DIAMETER PIPE SHALL BE DUCTILE IRON RESTRAINED JOINT PRESSURE CLASS 250, UNLESS OTHERWISE NOTED ON THE UTILITY CONSTRUCTION PLANS.
3. ALL VALVES ON WATER MAINS SHALL BE DIRECT BURY GATE VALVES, UNLESS OTHERWISE NOTED ON THE UTILITY CONSTRUCTION PLANS.
4. DUCTILE IRON RESTRAINED JOINT PIPE SHALL BE USED IN LIEU OF THRUST BLOCKING ON PROPOSED WATER LINE RELOCATIONS.
5. CONCRETE THRUST BLOCKING (WALL BLOCKING) SHALL BE USED ON EXISTING WATER LINES AT THE PROPOSED RELOCATION TIE-IN POINTS.
6. CONTRACTOR SHALL CONNECT ALL WATER LINES AND SERVICE CONNECTIONS USING NECESSARY FITTINGS.
7. SPLICING OF EXISTING WATER SERVICES IS NOT ALLOWED. ALL WATER METER RELOCATIONS AND RECONNECTS SHALL TIE IN AT THE EXISTING CORPORATION STOP.
8. ALL BACKFLOW PREVENTORS ARE THE RESPONSIBILITY OF THE PROPERTY OWNER.
9. THE CHARLOTTE WATER (CLTWATER) STANDARD DETAILS LOCATED ON THEIR WEBSITE AT:
<https://www.charlottenc.gov/water/DevelopmentProjects/Design-Manual> SHALL SUPERCEDE ANY CLTWATER DETAILS SHOWN IN THIS PLAN SET.
10. FOR FIRE HYDRANTS TO BE REMOVED, THE CONTRACTOR SHALL CONTACT CLTWATER TO DETERMINE A SUITABLE LOCATION TO STOCKPILE THE FIRE HYDRANT AND ASSOCIATED ITEMS.
11. CONTRACTOR IS REQUIRED TO CONTACT LOGAN HEDRICK, CLTWATER ENGINEERING PROJECT MANAGER, AT (980)253-4390 AT LEAST 2 WEEKS PRIOR TO ANY WATER AND SEWER CONSTRUCTION.

12. THE CONTRACTOR SHALL PROVIDE THE ANODE TEST STATION AND CATHODIC PROTECTION DESIGN PLANS AND SPECIFICATIONS SIGNED BY A PROFESSIONAL ENGINEER REGISTERED IN THE STATE OF NORTH CAROLINA. THE PLANS SHALL BE REVIEWED AND APPROVED BY NCDOT AND CHARLOTTE WATER PRIOR TO THE ANODE STATION AND CATHODIC PROTECTION BEING INSTALLED.

UTILITY CONSTRUCTION

2024-MAR-20 10:09:24
 C:\Users\jsh\OneDrive\Documents\Projects\2018\A2018401.001_NCDOT_U-5108\Design\Utilities\Engineering\UC_Proj_U-5108_ut_moc\tes_UC03_psh.dgn