
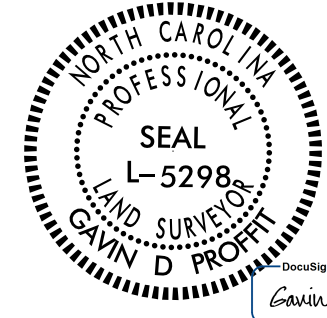


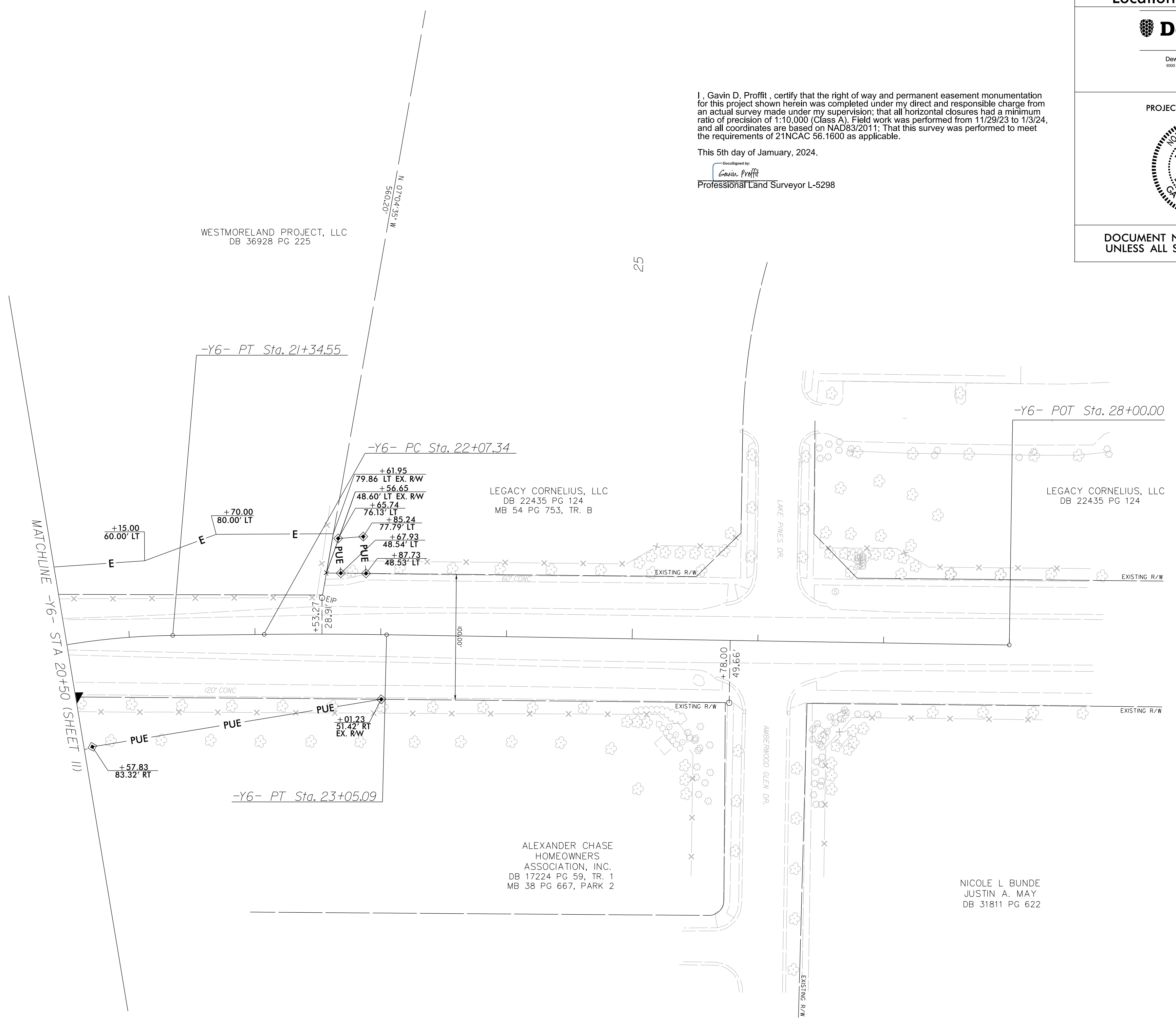
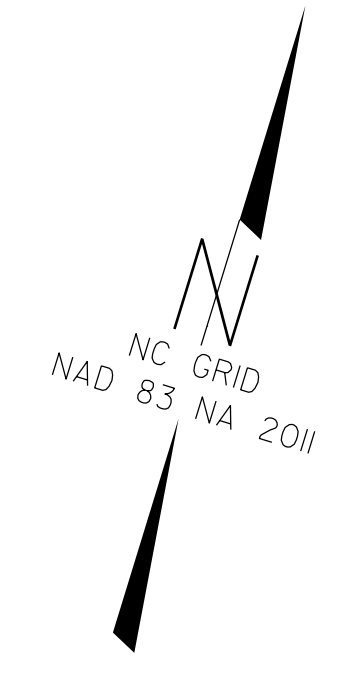
PROJECT REFERENCE NO. U-5108	SHEET NO. RW12
Location and Surveys	
	
<small>Dewberry Engineers Inc. 900 West-Coverly Drive, Suite 100 Charlotte, NC 28208 Phone: 704.526.8918 Fax: 704.526.8919 www.dewberry.com NCELS # 41989</small>	
PROJECT SURVEYOR	
	
DOCUMENT NOT CONSIDERED FINAL UNLESS ALL SIGNATURES COMPLETED	

I, Gavin D. Proffitt, certify that the right of way and permanent easement monumentation for this project shown herein was completed under my direct and responsible charge from an actual survey made under my supervision, that all horizontal closures had a minimum ratio of precision of 1:10,000 (Class A). Field work was performed from 11/29/23 to 1/3/24, and all coordinates are based on NAD83/2011; That this survey was performed to meet the requirements of 21NCAC 56.1600 as applicable.

This 5th day of January, 2024.

Designed by

Professional Land Surveyor L-5298



REVISIONS

DE: JAN 2024 15:05
 C:\PI\AN-2024-1501628034_u5108_con.dwg
 dws: Topless AT PF 3MGC03

NOTES:

1. IF FURTHER INFORMATION REGARDING PROJECT CONTROL IS NEEDED PLEASE CONTACT THE LOCATION AND SURVEYS UNIT.
2. PROJECT CONTROL WAS ESTABLISHED USING GNSS, THE GLOBAL NAVIGATION SATELLITE SYSTEM.
3. RIGHT OF WAY MONUMENTATION ESTABLISHED 11/29/23 TO 1/3/24.