

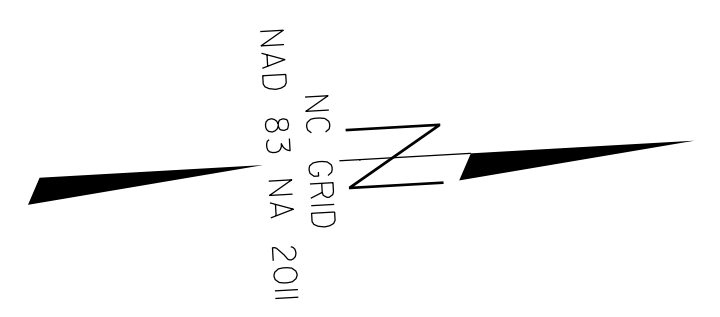


PROJECT REFERENCE NO.	SHEET NO.
U-5108	RW10
Location and Surveys	
	
<small>Dewberry Engineers Inc. 6000 West Center Street, Suite 1000 Charlotte, NC 28208 Phone: 704.526.8978 Fax: 704.526.8979 www.dewberry.com NC REG. P.L.S. # 10083</small>	
PROJECT SURVEYOR	
	
<small>Developed by Gavin D. Proffitt Professional Land Surveyor L-5298</small>	
DOCUMENT NOT CONSIDERED FINAL UNLESS ALL SIGNATURES COMPLETED	

I, Gavin D. Proffitt, certify that the right of way and permanent easement monumentation for this project shown herein was completed under my direct and responsible charge from an actual survey made under my supervision, that all horizontal closures had a minimum ratio of precision of 1:10,000 (Class A). Field work was performed from 11/29/23 to 1/3/24, and all coordinates are based on NAD83/2011; That this survey was performed to meet the requirements of 21NCAC 56.1600 as applicable.

This 5th day of January, 2024.
 Developed by
 Gavin D. Proffitt
 Professional Land Surveyor L-5298



MECKLENBURG COUNTY
 DB 23232 PG 739
 MB 49 PG 595-597, LOTS E, G, M, O

TOWN OF CORNELIUS
 DB 26414 PG 346
 MB 47 PG 641, TR. 2

ALEXANDER CHASE HOMEOWNERS ASSOCIATION, INC.
 DB 26009 PG 35
 MB 46 PG 955, COS "J"

ALEXANDER CHASE HOMEOWNERS ASSOCIATION, INC.
 DB 26009 PG 35
 MB 46 PG 955, COS "J"

ALEXANDER CHASE HOMEOWNERS ASSOCIATION, INC.
 DB 19484 PG 158
 MB 44 PG 121, COS 2

ALEXANDER CHASE HOMEOWNERS ASSOCIATION, INC.
 DB 26009 PG 35
 MB 46 PG 955, COS "H"

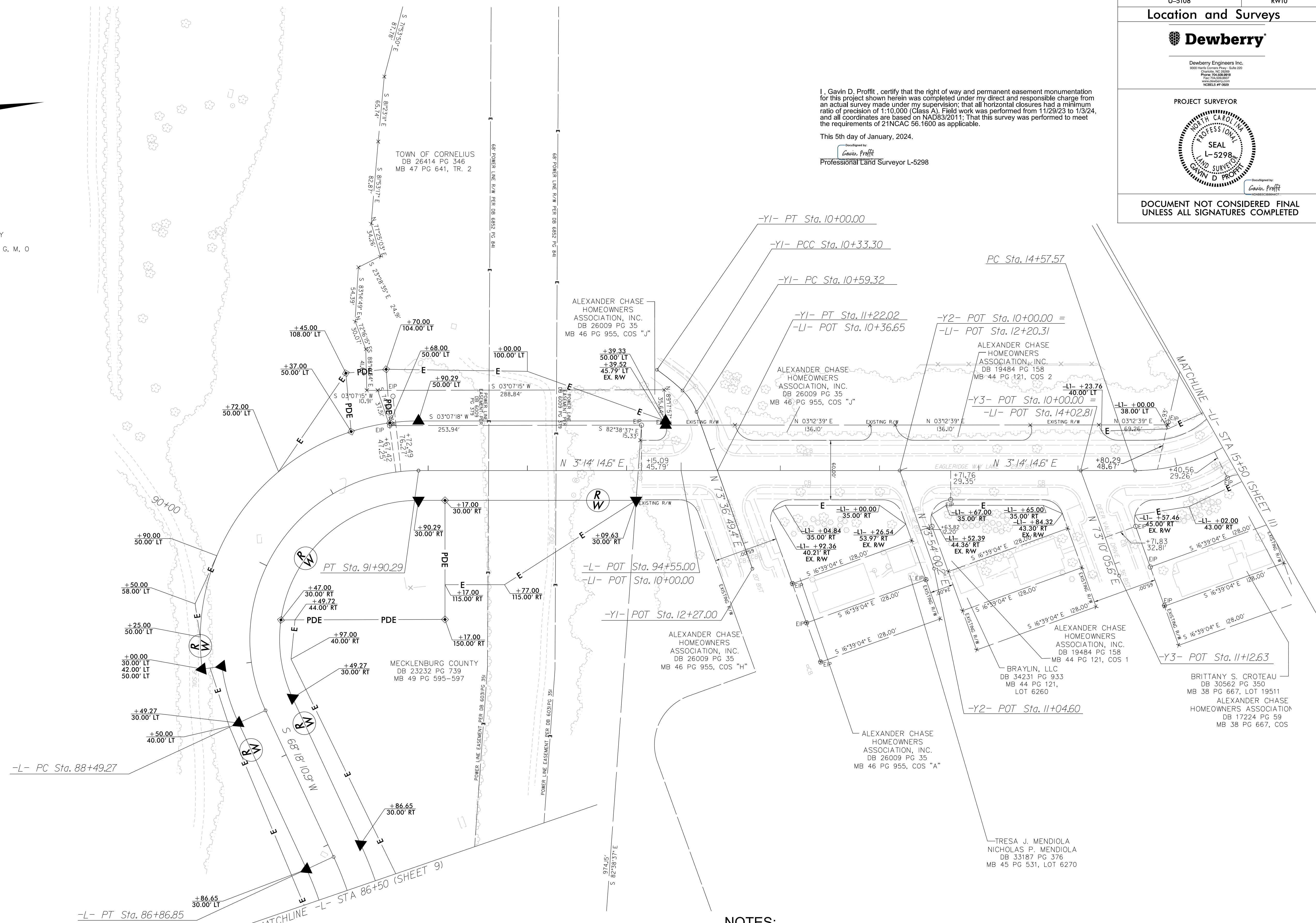
MECKLENBURG COUNTY
 DB 23232 PG 739
 MB 49 PG 595-597

ALEXANDER CHASE HOMEOWNERS ASSOCIATION, INC.
 DB 19484 PG 158
 MB 44 PG 121, COS 1

BRAYLIN, LLC
 DB 34231 PG 933
 MB 44 PG 121, LOT 6260

TRESA J. MENDIOLA
 NICHOLAS P. MENDIOLA
 DB 33187 PG 376
 MB 45 PG 531, LOT 6270

BRITTANY S. CROTEAU
 DB 30562 PG 350
 MB 38 PG 667, LOT 19511
 ALEXANDER CHASE HOMEOWNERS ASSOCIATION
 DB 17224 PG 59
 MB 38 PG 667, COS



REVISIONS

DE: JAN-2024, 15:37
 DT: PLAN-2024, 15:01
 DW: 501568034_u5108.con.dwg
 DUS: Topless
 AT: P:\3M\CC\3

NOTES:

1. IF FURTHER INFORMATION REGARDING PROJECT CONTROL IS NEEDED PLEASE CONTACT THE LOCATION AND SURVEYS UNIT.
2. PROJECT CONTROL WAS ESTABLISHED USING GNSS, THE GLOBAL NAVIGATION SATELLITE SYSTEM.
3. RIGHT OF WAY MONUMENTATION ESTABLISHED 11/29/23 TO 1/3/24.