
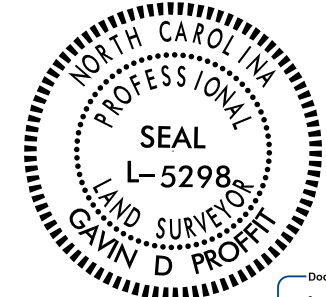
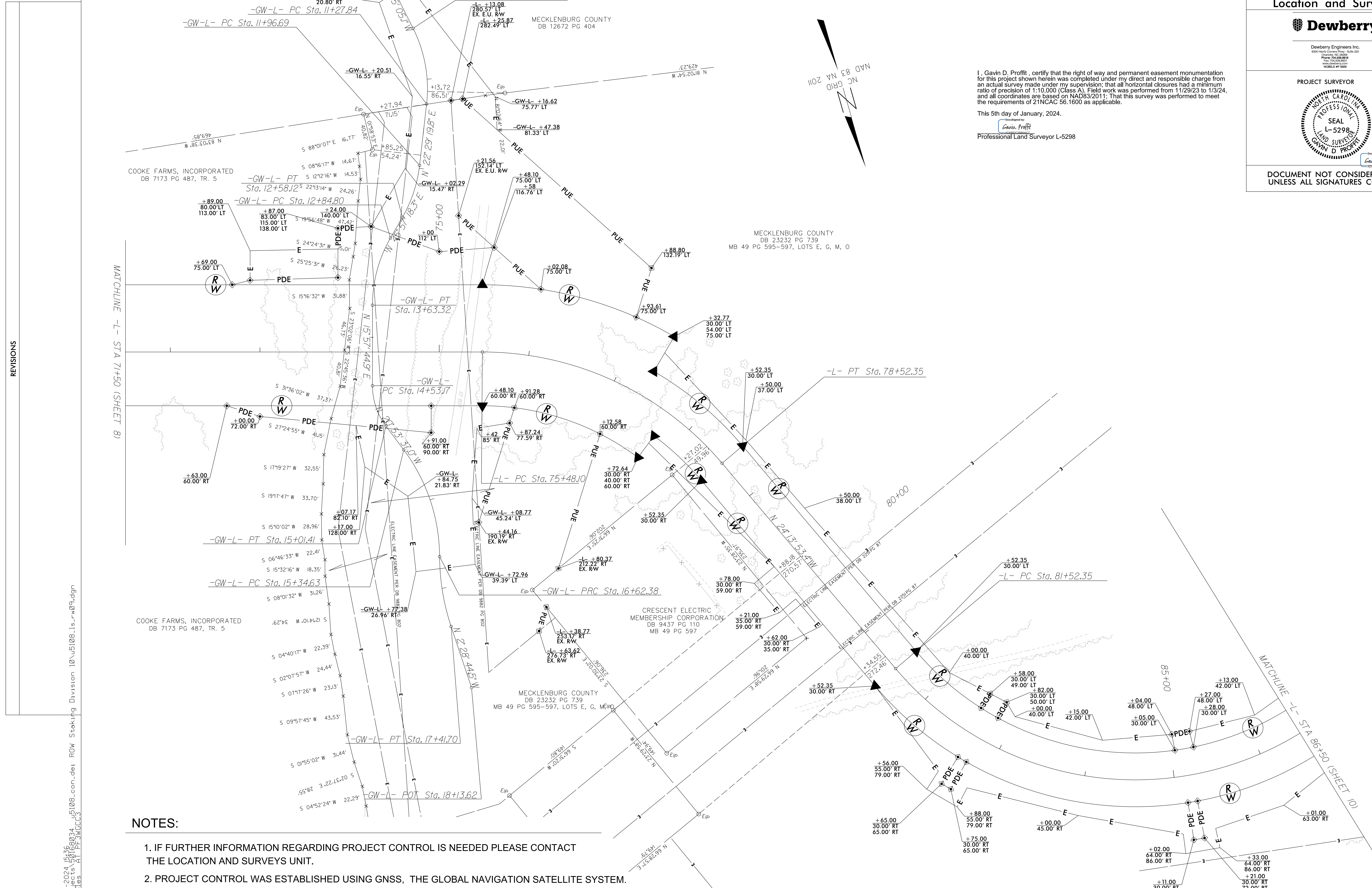


PROJECT REFERENCE NO.	SHEET NO.
U-5108	RW09
Location and Surveys	
	
<small>Dewberry Engineers Inc. 900 West Center Street, Suite 1000 Charlotte, NC 28202 Phone: 704.366.8919 Fax: 704.366.8920 www.dewberry.com NCELS # 41-0889</small>	
PROJECT SURVEYOR	
	
<small>Developed by Gavin D. Proffitt Professional Land Surveyor L-5298</small>	
DOCUMENT NOT CONSIDERED FINAL UNLESS ALL SIGNATURES COMPLETED	

I, Gavin D. Proffitt, certify that the right of way and permanent easement monumentation for this project shown herein was completed under my direct and responsible charge from an actual survey made under my supervision, that all horizontal closures had a minimum ratio of precision of 1:10,000 (Class A). Field work was performed from 11/29/23 to 1/3/24, and all coordinates are based on NAD83/2011; That this survey was performed to meet the requirements of 21NCAC 56.1600 as applicable.

This 5th day of January, 2024.
Gavin D. Proffitt
Professional Land Surveyor L-5298



NOTES:

1. IF FURTHER INFORMATION REGARDING PROJECT CONTROL IS NEEDED PLEASE CONTACT THE LOCATION AND SURVEYS UNIT.
2. PROJECT CONTROL WAS ESTABLISHED USING GNSS, THE GLOBAL NAVIGATION SATELLITE SYSTEM.
3. RIGHT OF WAY MONUMENTATION ESTABLISHED 11/29/23 TO 1/3/24.

REVISIONS

MATCHLINE -L- STA 71+50 (SHEET 8)

MATCHLINE -L- STA 86+50 (SHEET 10)

DE: JAN 2024 15:36
 DT: 1/16/2024 10:51:08.con.dwg
 DWG: 10:51:08.con.dwg
 PLOT: 3/16/2024 10:51:08.con.dwg
 PLOT: 3/16/2024 10:51:08.con.dwg