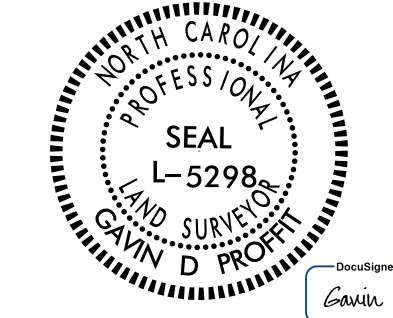


Location and Surveys



Dewberry Engineers Inc.  
 9200 Woodcroft Drive, Suite 100  
 Charlotte, NC 28268  
 Phone: 704.526.8978  
 Fax: 704.526.8977  
 www.dewberry.com  
 NCESLS # 19089

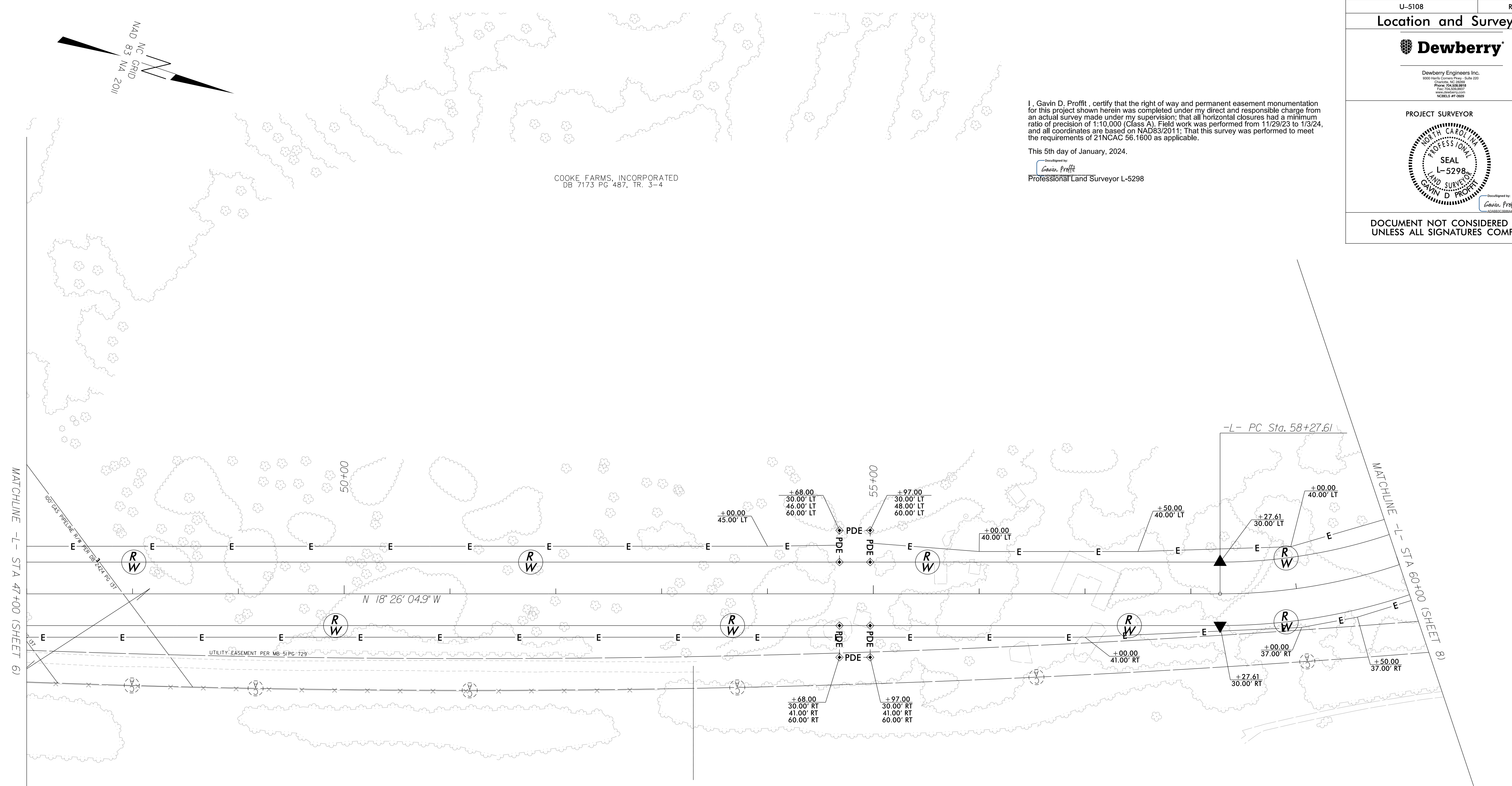
PROJECT SURVEYOR



DOCUMENT NOT CONSIDERED FINAL UNLESS ALL SIGNATURES COMPLETED

I, Gavin D. Proffit, certify that the right of way and permanent easement monumentation for this project shown herein was completed under my direct and responsible charge from an actual survey made under my supervision, that all horizontal closures had a minimum ratio of precision of 1:10,000 (Class A). Field work was performed from 11/29/23 to 1/3/24, and all coordinates are based on NAD83/2011; That this survey was performed to meet the requirements of 21NCAC 56.1600 as applicable.

This 5th day of January, 2024.  
 Designed by  
 Gavin Proffit  
 Professional Land Surveyor L-5298



REVISIONS

MATCHLINE -L- STA 47+00 (SHEET 6)

MATCHLINE -L- STA 60+00 (SHEET 8)

NOTES:

1. IF FURTHER INFORMATION REGARDING PROJECT CONTROL IS NEEDED PLEASE CONTACT THE LOCATION AND SURVEYS UNIT.
2. PROJECT CONTROL WAS ESTABLISHED USING GNSS, THE GLOBAL NAVIGATION SATELLITE SYSTEM.
3. RIGHT OF WAY MONUMENTATION ESTABLISHED 11/29/23 TO 1/3/24.

DE: JAN 2024 15:41  
 C:\p\5108\5108.dwg  
 Plotless  
 AT: PF:3MGC03  
 Row Staking Division 10\5108.1s.rw07.dgn