

-L-
 PI Sta 61+08.65
 $\Delta = 55^\circ 36' 10.2" (LT)$
 $D = 10^\circ 44' 58.8"$
 $L = 517.25'$
 $T = 281.04'$
 $R = 533.00'$
 $SE = 4\%$
 $RO = 112'$
 $DS = 40 \text{ MPH}$

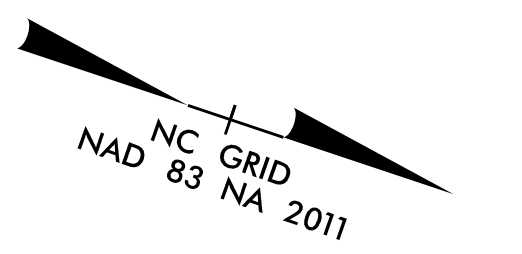
FOR -L- PROFILE, SEE SHEET 14

Kimley Horn
 NC LICENSE #F-0102
 200 SOUTH TRYON, SUITE 200
 CHARLOTTE, N.C. 28202

RIGHT-OF-WAY REV.
 CONST. REV.

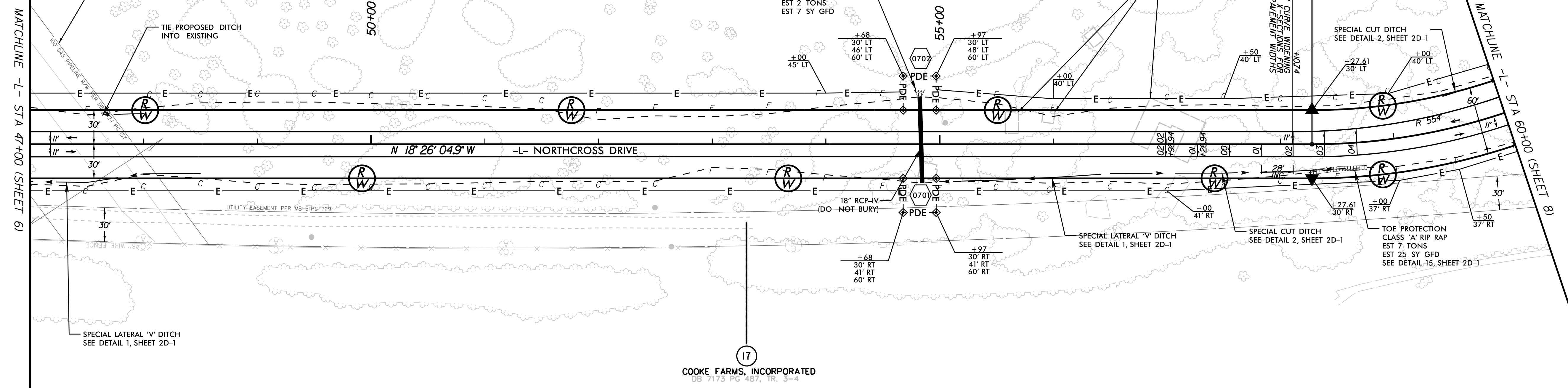
PROJECT REFERENCE NO. U-5108	SHEET NO. 7
ROADWAY DESIGN ENGINEER	HYDRAULICS ENGINEER
DOCUMENT NOT CONSIDERED FINAL UNLESS ALL SIGNATURES COMPLETED	

(17)
 COOKE FARMS, INCORPORATED
 DB 7173 PG 487, TR. 3-4



CONTRACTOR MUST ABIDE BY THE FOLLOWING WHEN WORKING WITHIN WILLIAMS' DEVELOPER EASEMENT:
 1. A WILLIAMS CO. INC.'S REPRESENTATIVE MUST BE ON SITE WHEN WORK IS BEING DONE IN THE GAS EASEMENT.
 2. ALL CONSTRUCTION EQUIPMENT USED WITHIN THE GAS EASEMENT MUST BE APPROVED BY WILLIAMS CO. INC. PRIOR TO CONSTRUCTION.
 3. VIBRATORY EQUIPMENT WITHIN THE GAS EASEMENT IS PROHIBITED.

MATCHLINE -L- STA 47+00 (SHEET 6)



(17)
 COOKE FARMS, INCORPORATED
 DB 7173 PG 487, TR. 3-4