

-L-  
 FOR -L- PROFILE, SEE SHEET 14

PAVEMENT REMOVAL

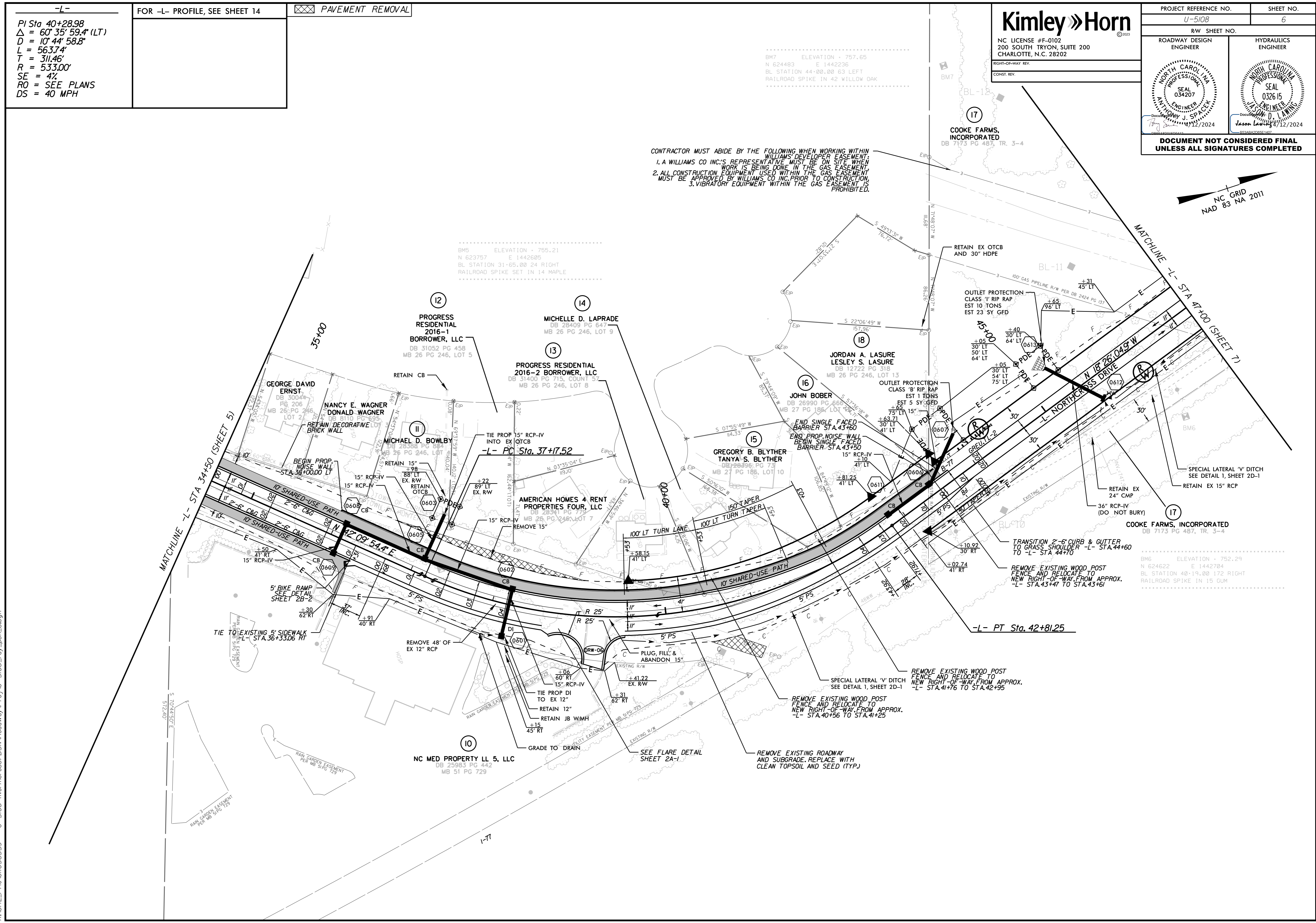
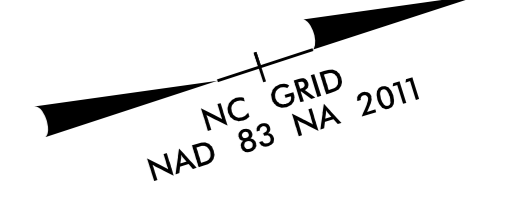
PI Sta 40+28.98  
 $\Delta = 60' 35" 59.4" (LT)$   
 $D = 10' 44" 58.8"$   
 $L = 563.74'$   
 $T = 311.46'$   
 $R = 533.00'$   
 $SE = 4\%$   
 $RO = SEE PLANS$   
 $DS = 40 MPH$

**Kimley Horn**

NC LICENSE #F-0102  
 200 SOUTH TRYON, SUITE 200  
 CHARLOTTE, N.C. 28202

PROJECT REFERENCE NO. U-5108	SHEET NO. 6
ROADWAY DESIGN ENGINEER	HYDRAULICS ENGINEER
DATE: 12/12/2024	DATE: 12/12/2024
<b>DOCUMENT NOT CONSIDERED FINAL UNLESS ALL SIGNATURES COMPLETED</b>	

CONTRACTOR MUST ABIDE BY THE FOLLOWING WHEN WORKING WITHIN WILLIAMS DEVELOPER EASEMENT:  
 1. A WILLIAMS CO INC.'S REPRESENTATIVE MUST BE ON SITE WHEN WORK IS BEING DONE IN THE GAS EASEMENT  
 2. ALL CONSTRUCTION EQUIPMENT USED WITHIN THE GAS EASEMENT MUST BE APPROVED BY WILLIAMS CO INC. PRIOR TO CONSTRUCTION.  
 3. VIBRATORY EQUIPMENT WITHIN THE GAS EASEMENT IS PROHIBITED.



4/12/2024  
 K:\CHL\_PRA\01036359 - U-5108 (Northcross) DSW\Roadway\Proj\U-5108\_rdy\_psh\_b.dgn