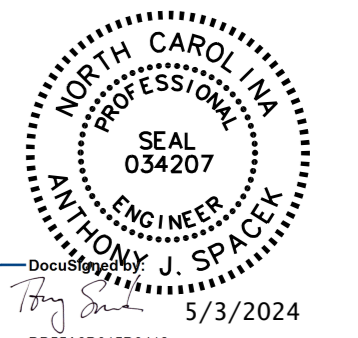
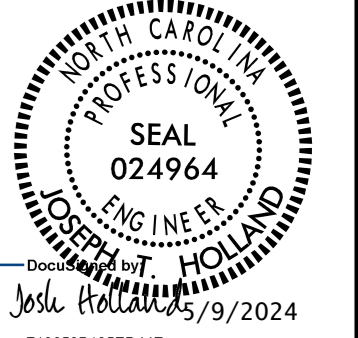
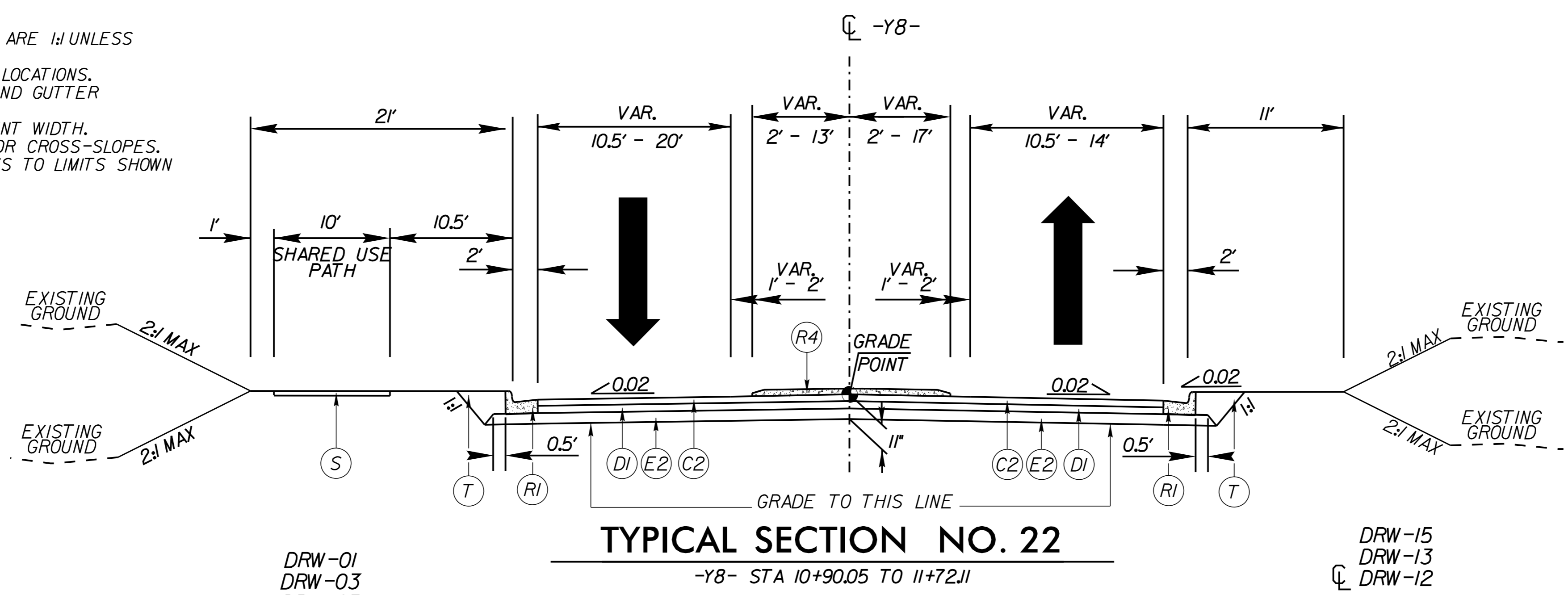


5/14/24

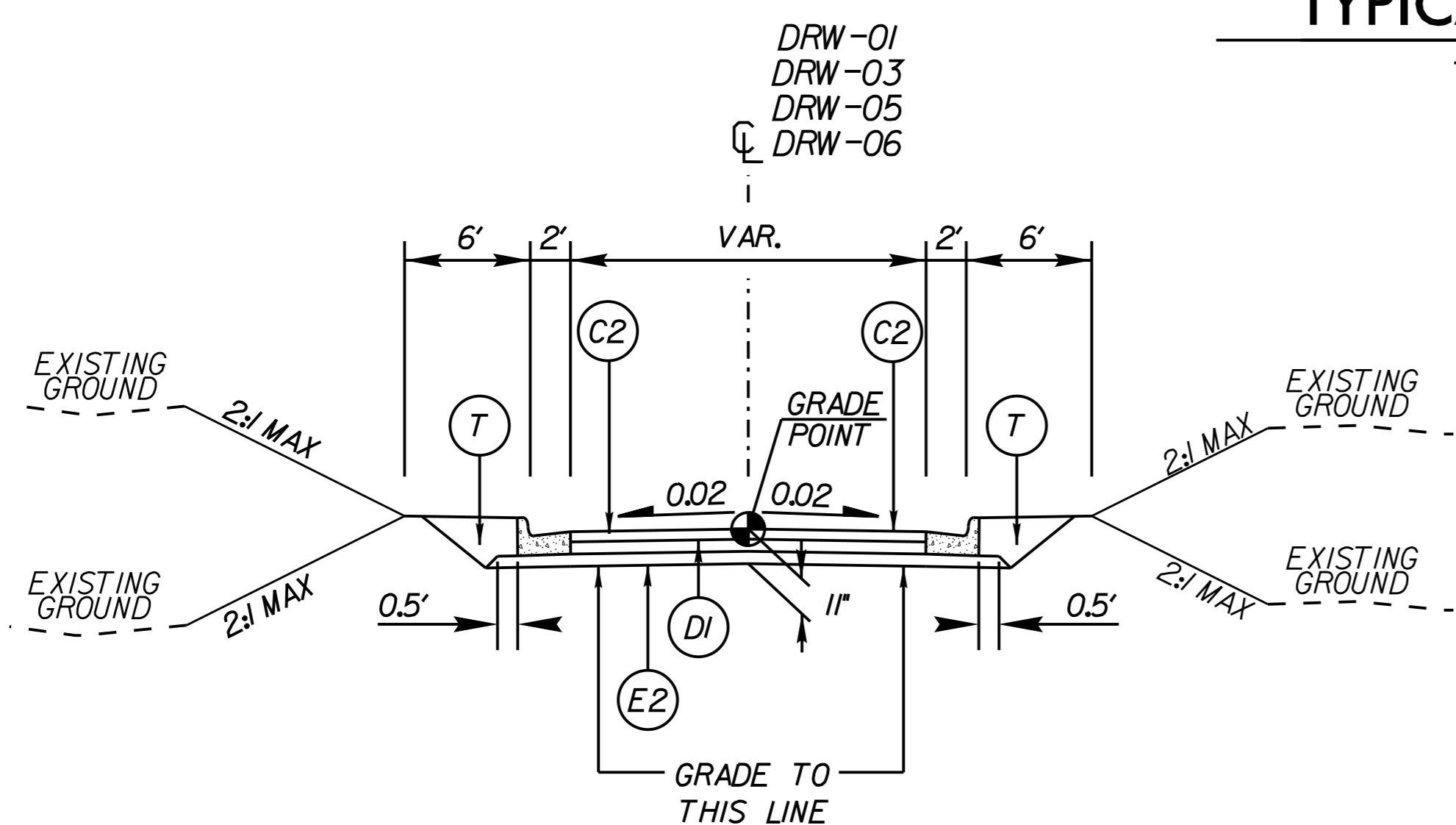
- NOTES:  
 1. PAVEMENT EDGE SLOPES ARE 1:1 UNLESS OTHERWISE NOTED.  
 2. SEE PLANS FOR TAPER LOCATIONS.  
 3. SEE PLANS FOR CURB AND GUTTER LOCATIONS.  
 4. SEE PLANS FOR PAVEMENT WIDTH.  
 5. SEE CROSS-SECTIONS FOR CROSS-SLOPES.  
 6. CONSTRUCT ALL DRIVEWAYS TO LIMITS SHOWN ON PLANS.

**Kimley Horn**  
 NC LICENSE #F-0102  
 200 SOUTH TRYON, SUITE 200  
 CHARLOTTE, N.C. 28202  
 RIGHT-OF-WAY REV.  
 CONST. REV.

PROJECT REFERENCE NO. U-5108	SHEET NO. 2A-11
ROADWAY DESIGN ENGINEER	PAVEMENT DESIGN ENGINEER
	
<b>DOCUMENT NOT CONSIDERED FINAL UNLESS ALL SIGNATURES COMPLETED</b>	

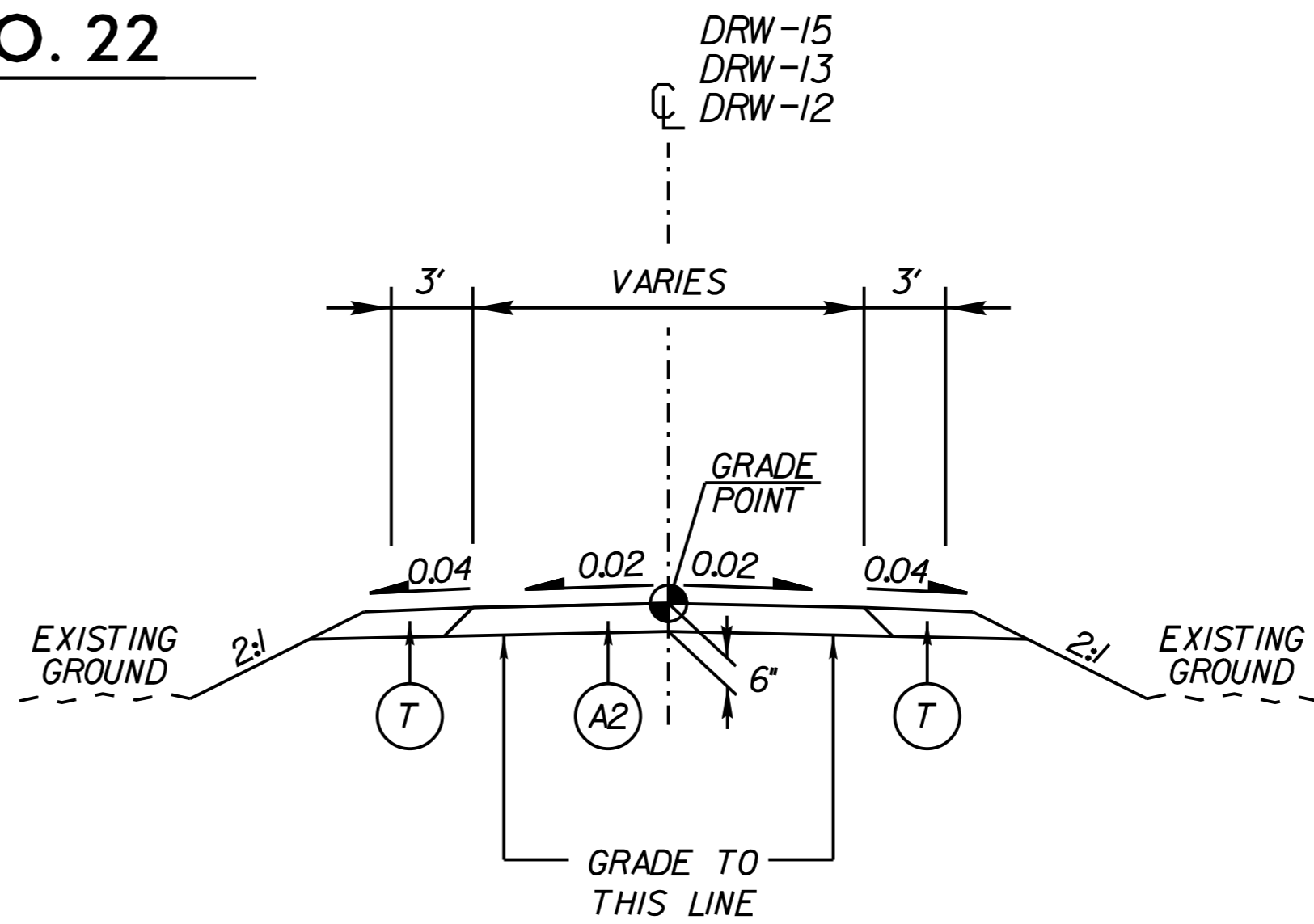


**TYPICAL SECTION NO. 22**  
 -Y8- STA 10+90.05 TO 11+72.11



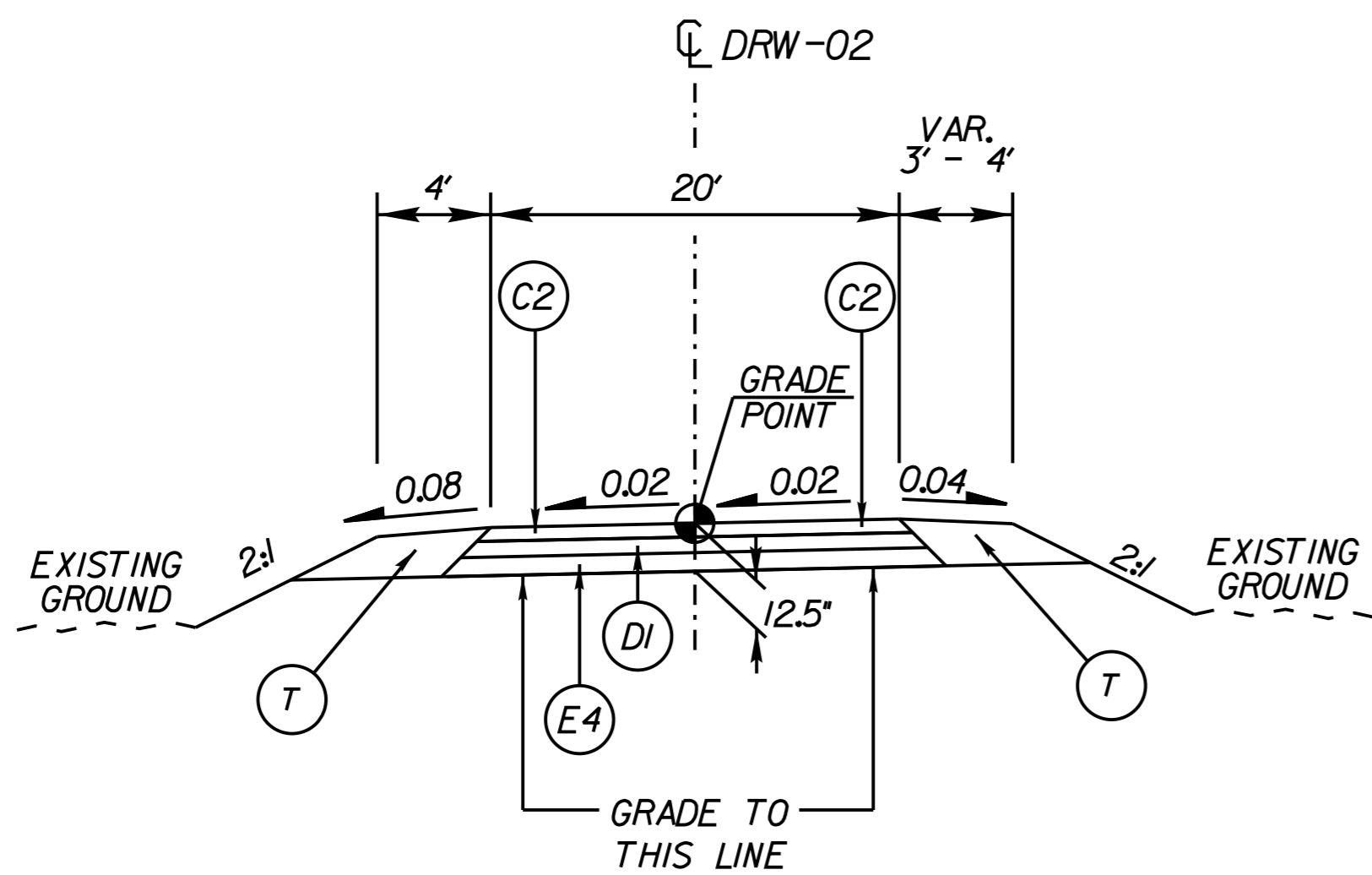
**TYPICAL SECTION NO. 23**

- DRW01- STA 10+16.00 TO 10+50.63
- DRW03- STA 10+16.00 TO 10+33.70
- DRW05- STA 10+16.00 TO 10+47.14
- DRW06- STA 10+16.00 TO 10+50.63



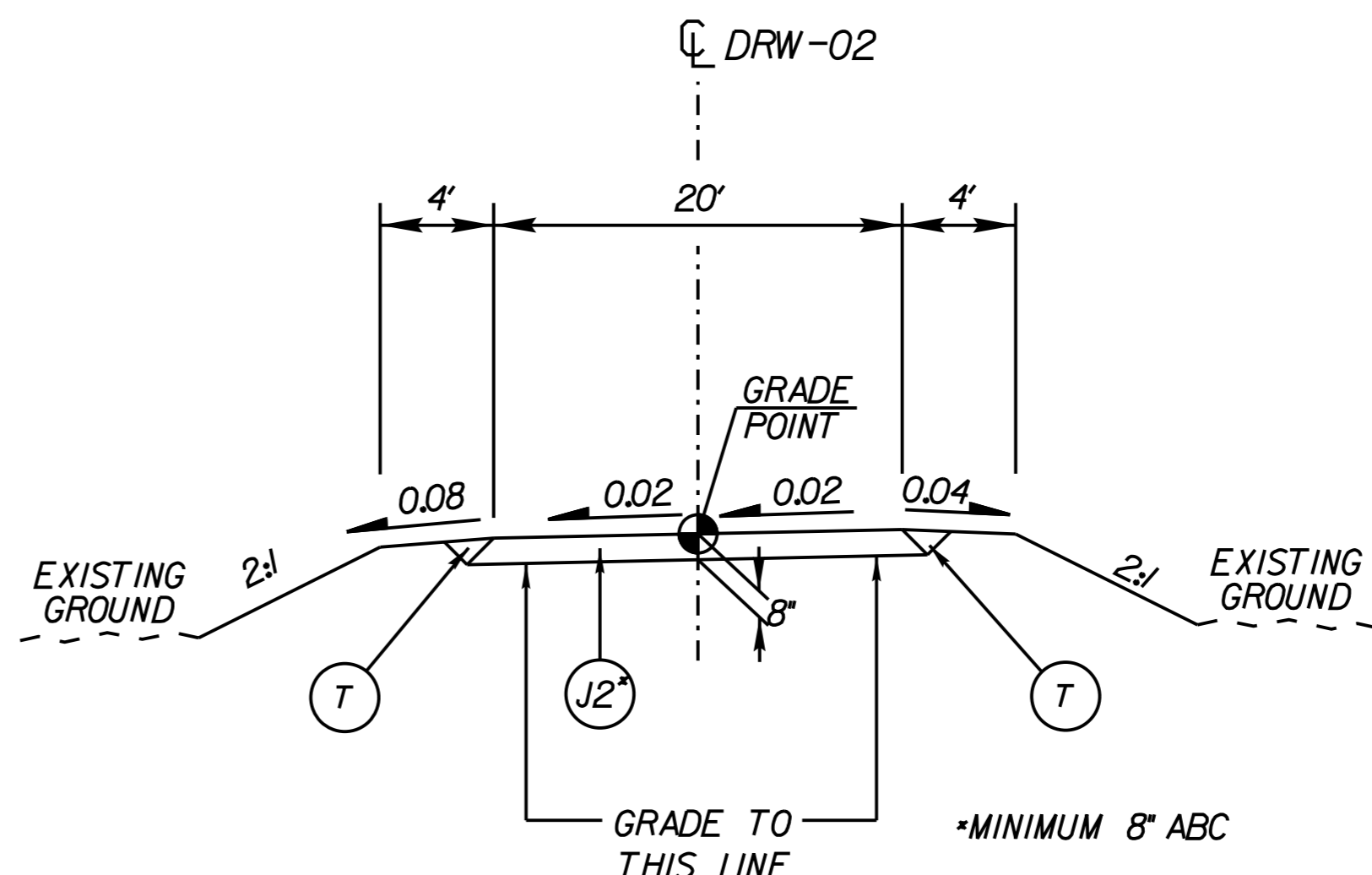
**TYPICAL SECTION NO. 24**

- DRW12- STA 10+10.00 TO 10+78.43
- DRW13- STA 10+17.00 TO 10+78.43
- DRW15- STA 10+00.00 TO 10+67.53



**TYPICAL SECTION NO. 25**

- DRW02- STA 10+16.00 TO 10+80.04



**TYPICAL SECTION NO. 26**

- DRW02- STA 10+80.04 TO 11+15.00

PAVEMENT SCHEDULE	
A1	12" TRUCK MOUNTABLE CONCRETE ISLAND (CLASS AA)
A2	6" CONCRETE DRIVEWAY
C1	1.5" S9.5B
C2	3" S9.5B
C3	VAR. S9.5B
DI	4" 119.0C
D2	VAR. 119.0C
E1	3" B25.0C
E2	4" B25.0C
E3	VAR. B25.0C
E4	5.5" B25.0C
F	ASPHALT SURFACE TREATMENT
G	12" SOIL CEMENT BASE (FULL DEPTH RECLAMATION)
J1	6" ABC
J2	8" ABC
K	CLASS IV SUBGRADE STABILIZATION
N	GEOTEXTILE FOR SUBGRADE STABILIZATION
RI	2'-6" CONCRETE CURB AND GUTTER
R2	1'-6" CONCRETE CURB AND GUTTER
R3	PROPOSED SHOULDER BERM GUTTER
R4	5" MONOLITHIC CONCRETE ISLAND (SURFACE MOUNTED)
R5	4" CONCRETE PAVED DITCH
R6	8" x 18" CONCRETE CURB
R7	SINGLE FACED CONCRETE BARRIER
S	4" CONCRETE SIDEWALK / SHARED USE PATH
T	EARTH MATERIAL
U	EXISTING PAVEMENT
VI	MILLING (1.5')
V2	MILLING (3.5')
W	WEDGING

K:\CHL\_PRA\1036359 - U-5108 (Northcross)\DS\Roadway\Proj\U-5108\_rdy\_tlp.dgn

5/3/2024