

Franklin

PROJECT REFERENCE NO.	SHEET NO.
2024CPT.05.17.20351.1, ETC.	1

Map 1 SR 1924 (Dreamcatcher Trl.)
From SR 1132 (Fleming Rd.) to SR 1924
(Dreamcatcher Trl.)

Map 2 SR 2062 (Eaglefeather Path)
From U.S. 1924 (Dreamcatcher Trl.) to SR 2060
(Remington Ct.)

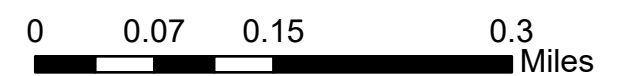
Map 3 SR 2060 (Remington Ct.)
From SR 2058 (Fleming Forest Dr.) to Cul-De-Sac

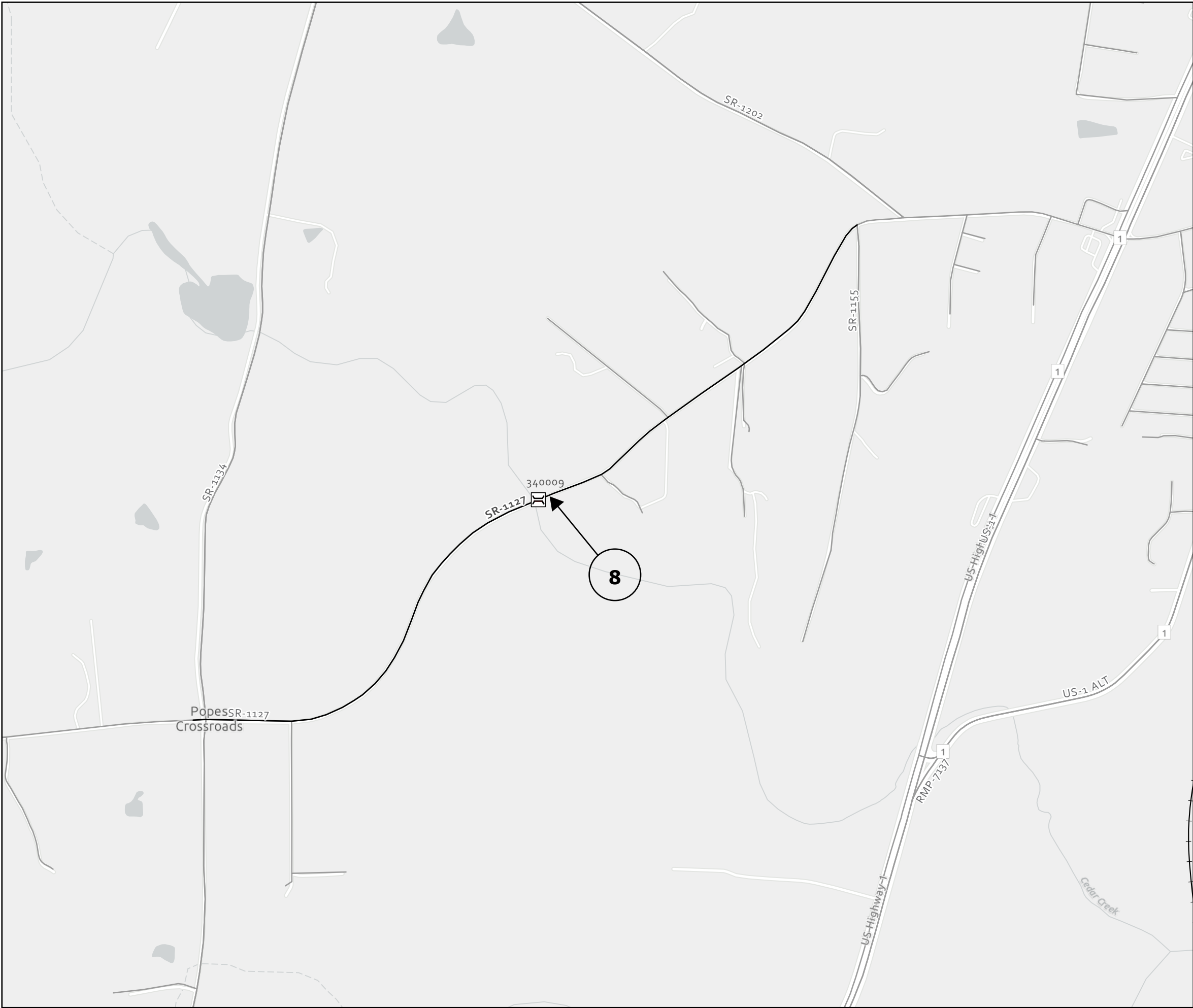
Map 4 SR 2063 (Winchester Ct.)
From SR 2060 (Remington Ct.) to Cul-De-Sac

Map 5 SR 2061 (Chesterfield Ct.)
From SR 2060 (Remington Ct.) to Cul-De-Sac

Map 6 SR 2058 (Fleming Forest Dr.)
From SR 1132 (Fleming Rd.) to Cul-De-Sac

Map 7 SR 2059 (Settlers Ct.)
From SR 2028 (Fleming Forest Dr.) to Cul-De-Sac

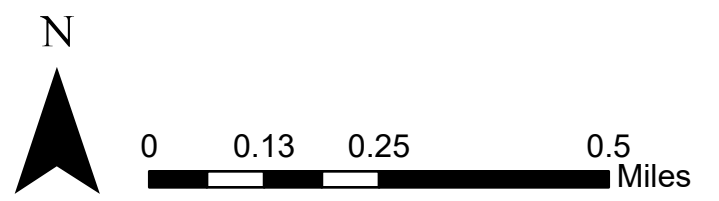




Franklin	
PROJECT REFERENCE NO.	SHEET NO.
2024CPT.05.17.20351.1, ETC.	2

Map 8: SR 1127 (Pocomoke Rd.)
 From SR 1155 (Garner Rd.) to SR 1134 (Long Mill Rd.)

Bridge 1: 340009



Franklin

PROJECT REFERENCE NO.	SHEET NO.
2024CPT.05.17.20351.1, ETC.	3

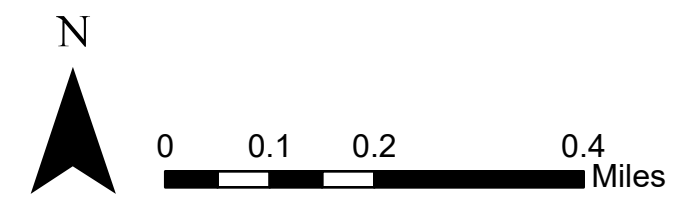
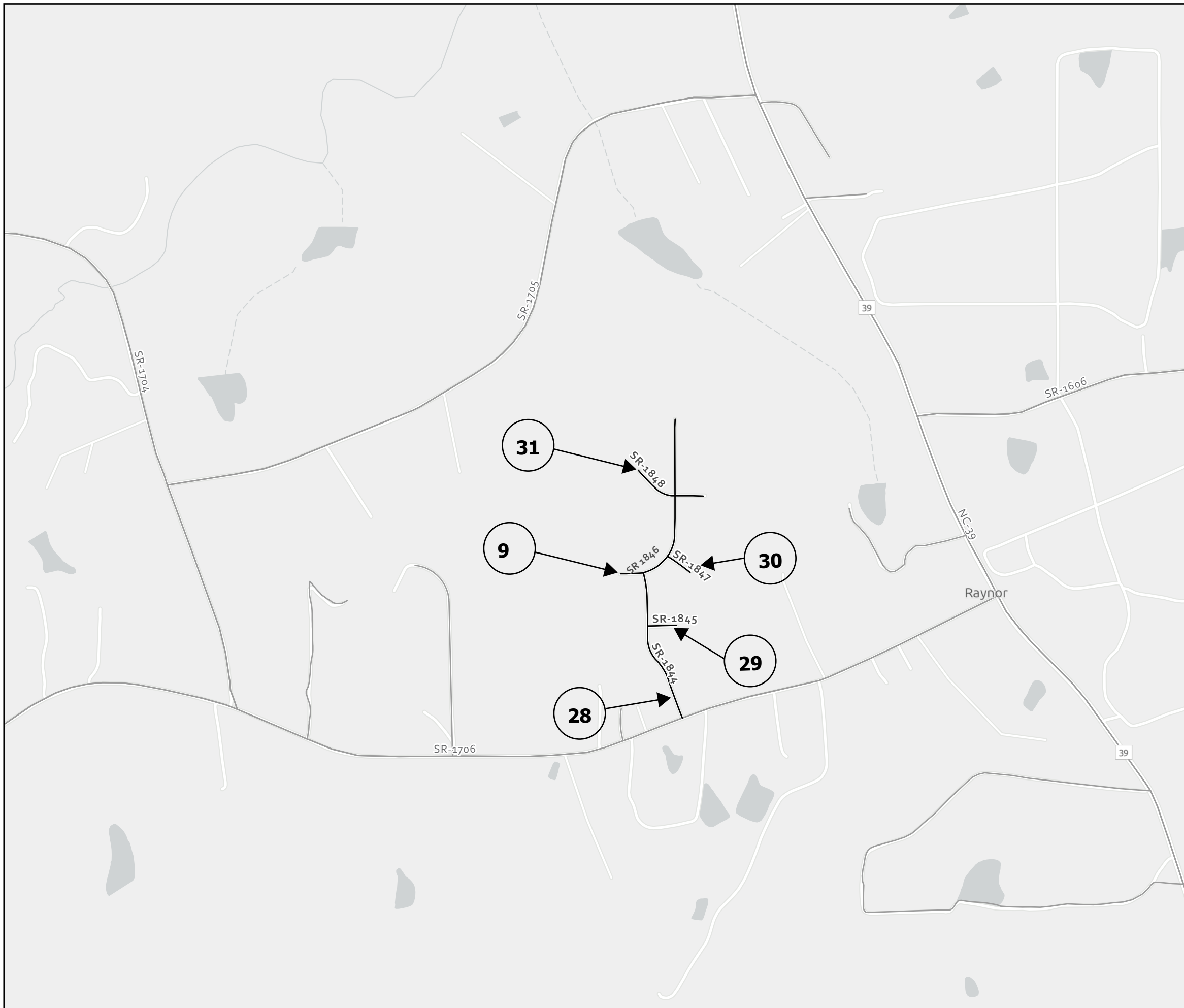
Map 9: SR 1846 (Willow Ridge Dr)
From Dead End to Dead End

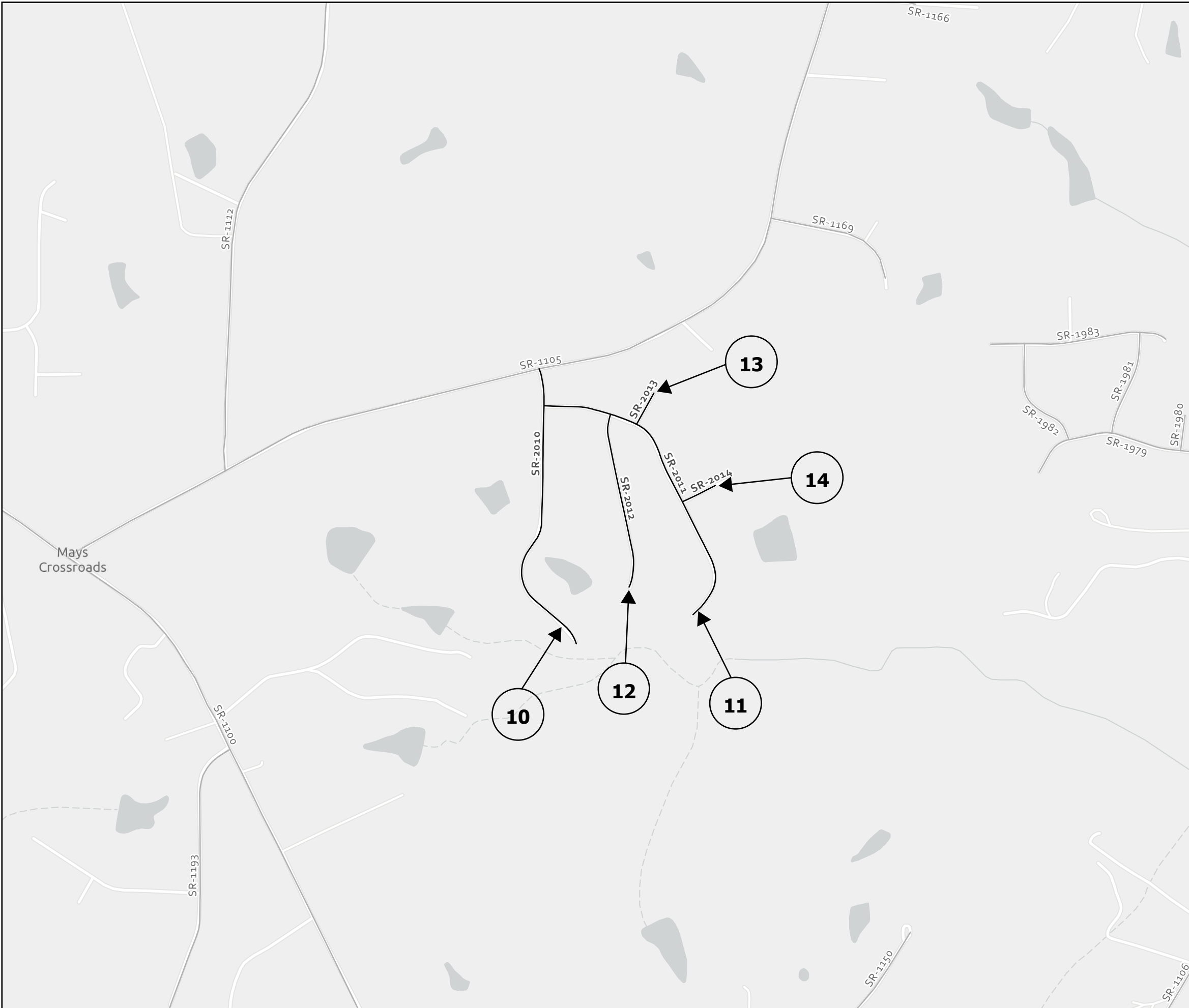
Map 28: SR 1844 (Wilders Crossing)
From SR 1706 (M C Wilder Rd.) to SR 1846 (Willow Ridge Dr.)

Map 29: SR 1845 (Oak Hollow Ct.)
From SR 1844 (Wilders Crossing) to Cul-De-Sac

Map 30: SR 1847 (Fern Ct.)
From SR 1846 (Willow Ridge Dr.) to Cul-De-Sac

Map 31: SR 1848 (Water Oak Way)
From Dead End to Cul-De-Sac





Franklin	
PROJECT REFERENCE NO.	SHEET NO.
2024CPT.05.17.20351.1, ETC.	4

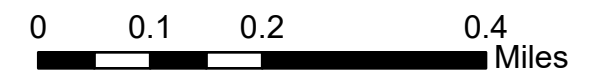
Map 10: SR 2010 (Glen Oaks Dr.)
From SR 1105 (Mays Crossroads Rd.) to Dead End

Map 11: SR 2011 (Oak Leaf Trl.)
From SR 2010 (Glen Oaks Dr.) to Cul-De-Sac

Map 12: SR 2012 (Falling Lead Dr.)
From SR 2011 (Oak Leaf Trl.) to Cul-De-Sac

Map 13: SR 2013 (Turning Leaf Ct.)
From SR 2011 (Oak Leaf Trl.) to Cul-De-Sac

Map 14: SR 2014 (Sessile Oak Way)
From SR 2011 (Oak Leaf Trl.) to Dead End



Franklin

PROJECT REFERENCE NO.

SHEET NO.

2024CPT.05.17.20351.1, ETC.

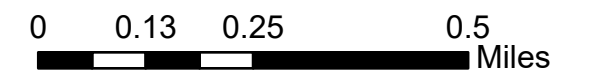
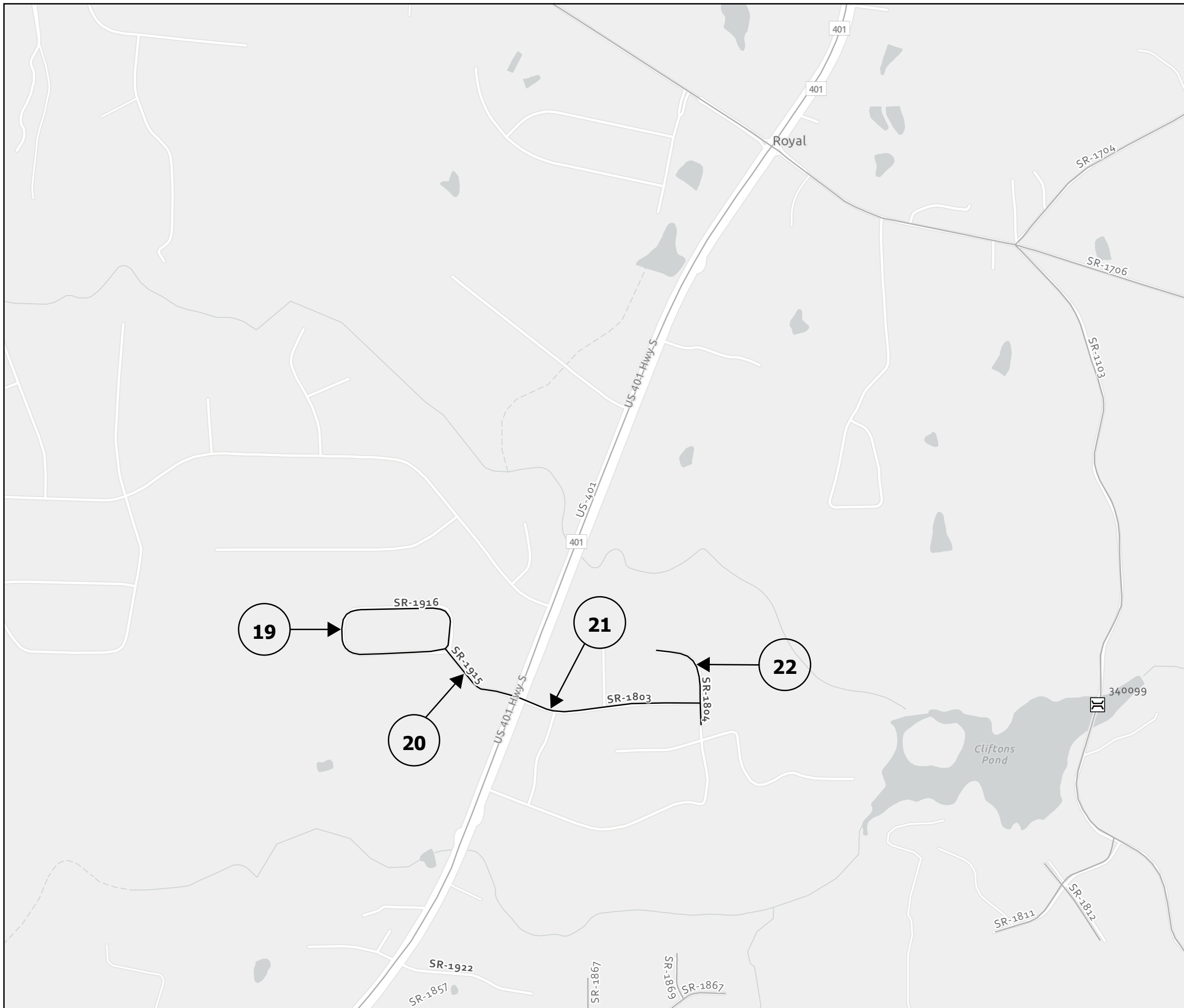
6

Map 19: SR 1916 (Baron Cir.)
From SR 1915 (Castle Dr.) to SR 1915 (Castle Dr.)

Map 20: SR 1915 (Castle Dr.)
From US-401 to SR 1916 (Baron Cir.)

Map 21: SR 1803 (Thistle Dr.)
From US-401 to SR 1804 (Thornwood Ln.)

Map 22: SR 1804 (Thornwood Ln.)
From Cul-De-Sac to End Maintenance



Franklin

PROJECT REFERENCE NO.	SHEET NO.
2024CPT.05.17.20351.1, ETC.	7

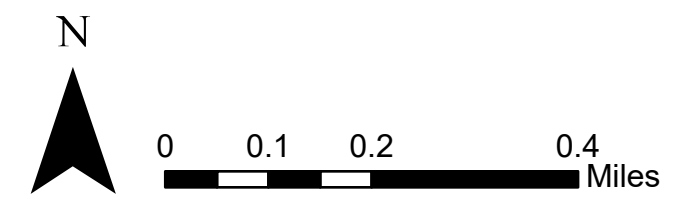
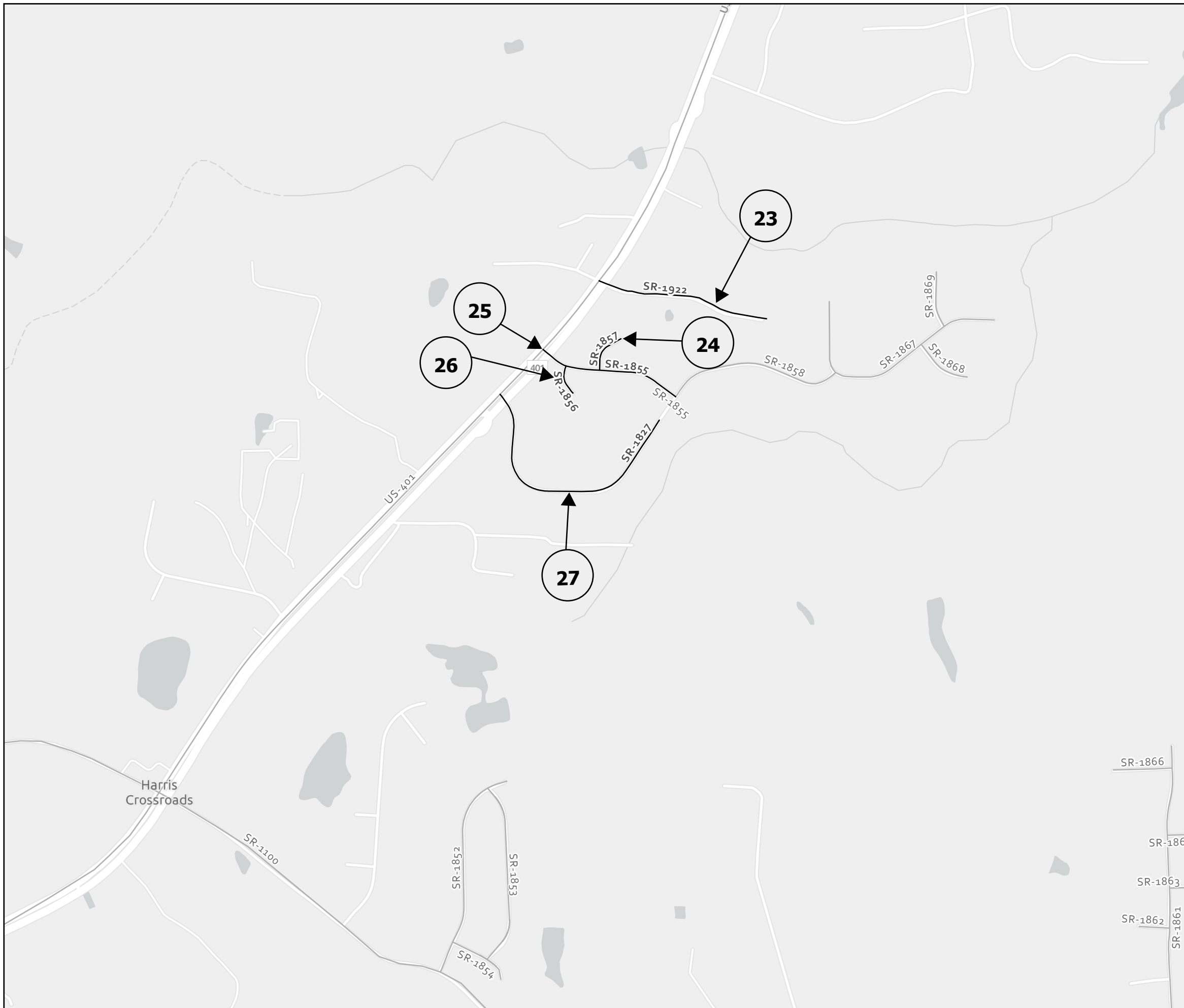
Map 23: SR 1922 (Green Bark Dr.)
From US-401 to Cul-De-Sac

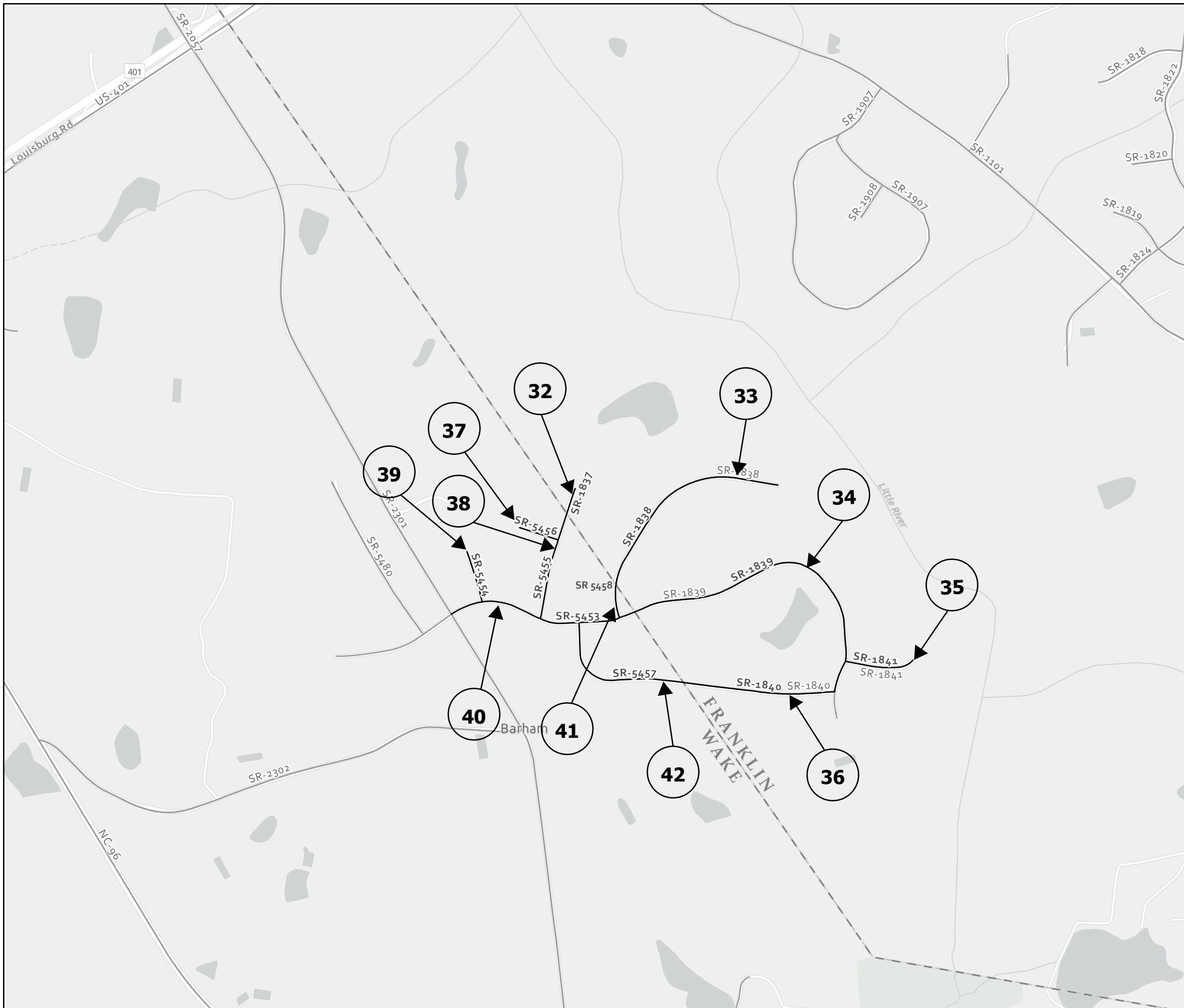
Map 24: SR 1857 (Red Fern Dr.)
From SR 1855 (Bailey Farms Dr.) to Cul-De-Sac

Map 25: SR 1855 (Bailey Farms Dr.)
From US-401 to SR 1858 (Beaver Dam Dr.)

Map 26: SR 1856 (Bailey Oaks Ct.)
From SR 1855 (Bailey Farms Dr.) to Cul-De-Sac

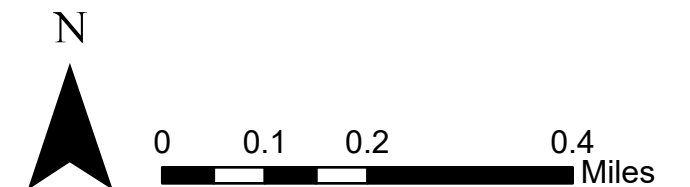
Map 27: SR 1827 (Beaver Dam Dr.)
From US-401 to Cul-De-Sac



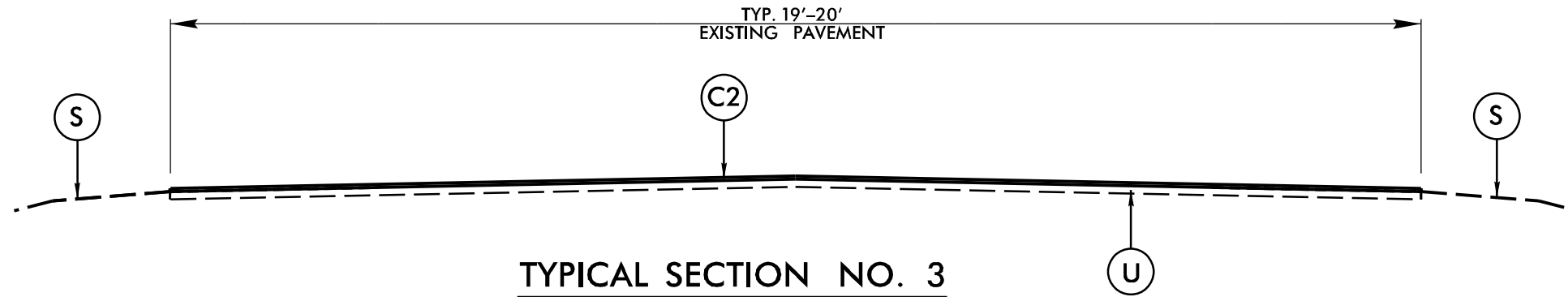


Franklin / Wake	
PROJECT REFERENCE NO.	SHEET NO.
2024CPT.05.17.20351.1, ETC.	8

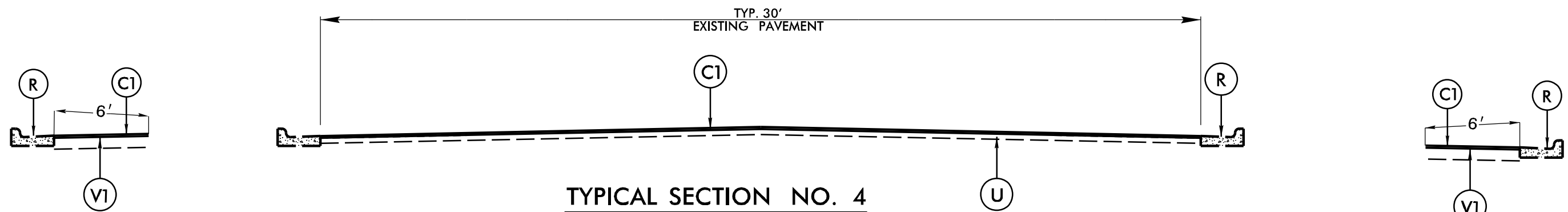
- Map 32: SR 1837 (Snooks Trl.)
From Wake County to Dead End
- Map 33: SR 1838 (Two Pines Trl.)
From Wake County to Cul-De-Sac
- Map 34: SR 1839 (Barham Hollow Dr.)
From Wake County to Dead End
- Map 35: SR 1841 (Lennox Pl.)
From SR 1839 (Barham Hollow Dr.) to Cul-De-Sac
- Map 36: SR 1840 (Clovis Ridge Dr.)
From Wake County to SR 1839 (Barham Hollow Dr.)
- Map 37: SR 5456 (Frog Hop Ct.)
From SR 5455 (Snooks Trl.) to Cul-De-Sac
- Map 38: SR 5455 (Snooks Trl.)
From SR 5453 (Barham Hollow Dr.) to Franklin County
- Map 39: SR 5454 (Jabbo Ct.)
From SR 5453 (Barham Hollow Dr.) to Cul-De-Sac
- Map 40: SR 5453 (Barham Hollow Dr.)
From Franklin County to SR 2301 (Barham Siding Rd.)
- Map 41: SR 5458 (Two Pines Trl.)
From SR 5453 (Barham Hollow Dr.) to Franklin County
- Map 42: SR 5457 (Clovis Ridge Dr.)
From SR 5453 (Barham Hollow Dr.) to Franklin County



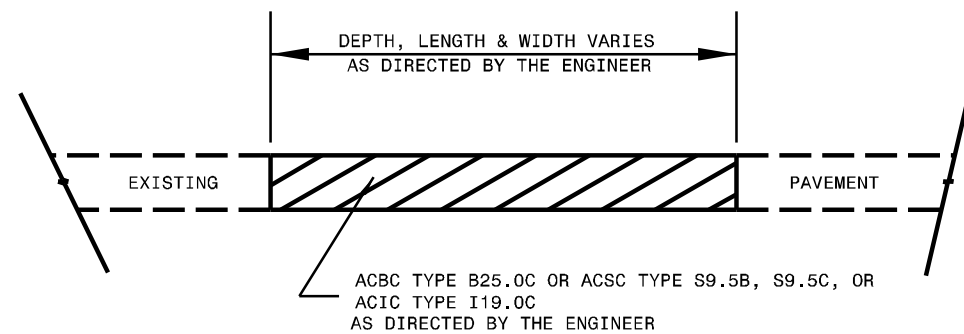
PAVEMENT SCHEDULE	
C1	1 1/4" S9.5B
C2	1 1/2" S9.5B
E	5 1/2" B25.0C
R	EXIST. C&G
S	SHOULDER RECON
U	EXIST. PAVEMENT
V1	0-1 1/4" MILLING



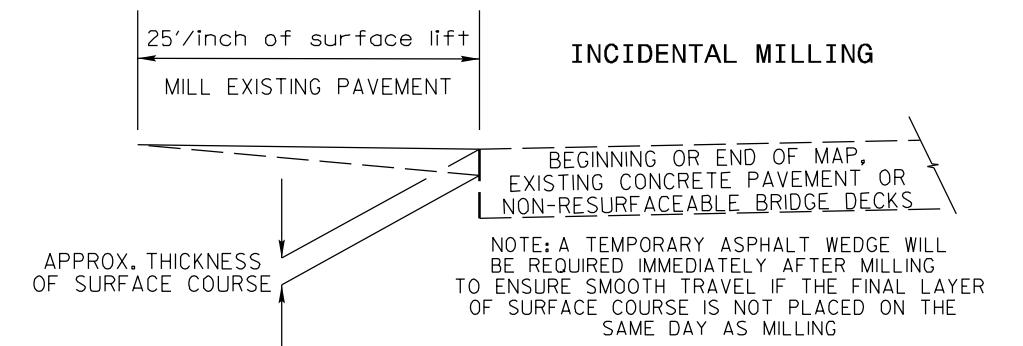
MAP NO.s 8, 12, 22



MAP NO. 20

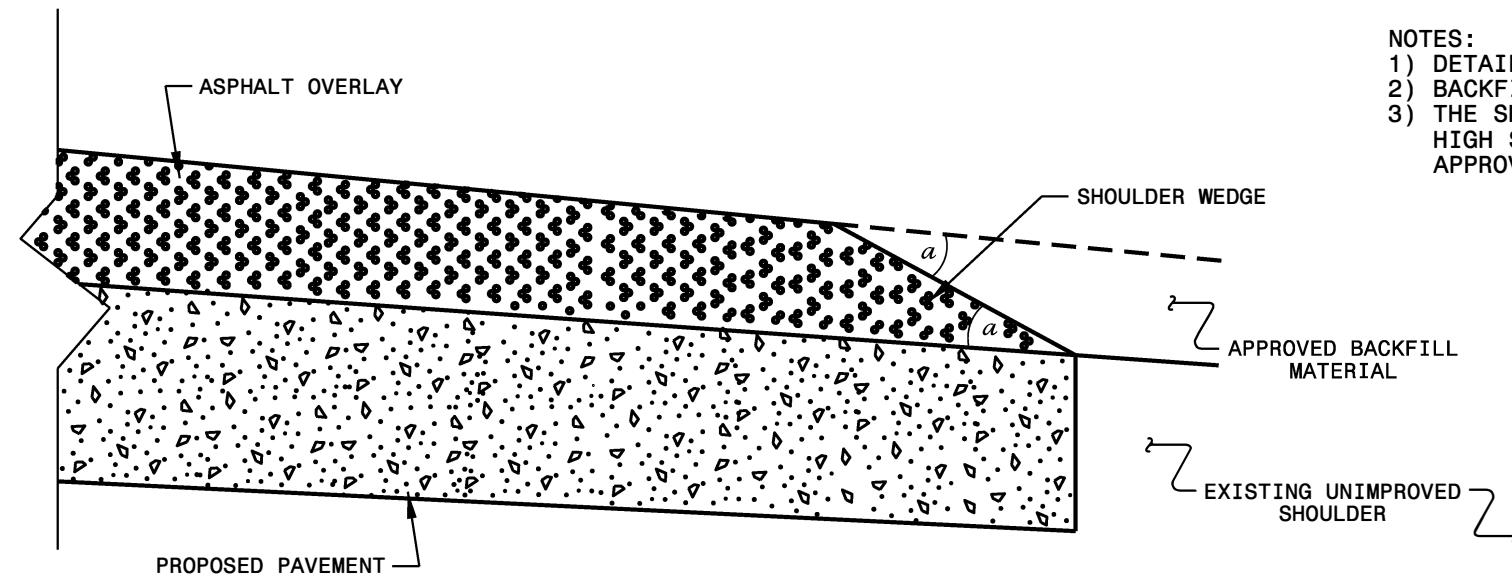


PATCHING EXISTING PAVEMENT
MILLING TO BE PERFORMED PRIOR TO PATCHING

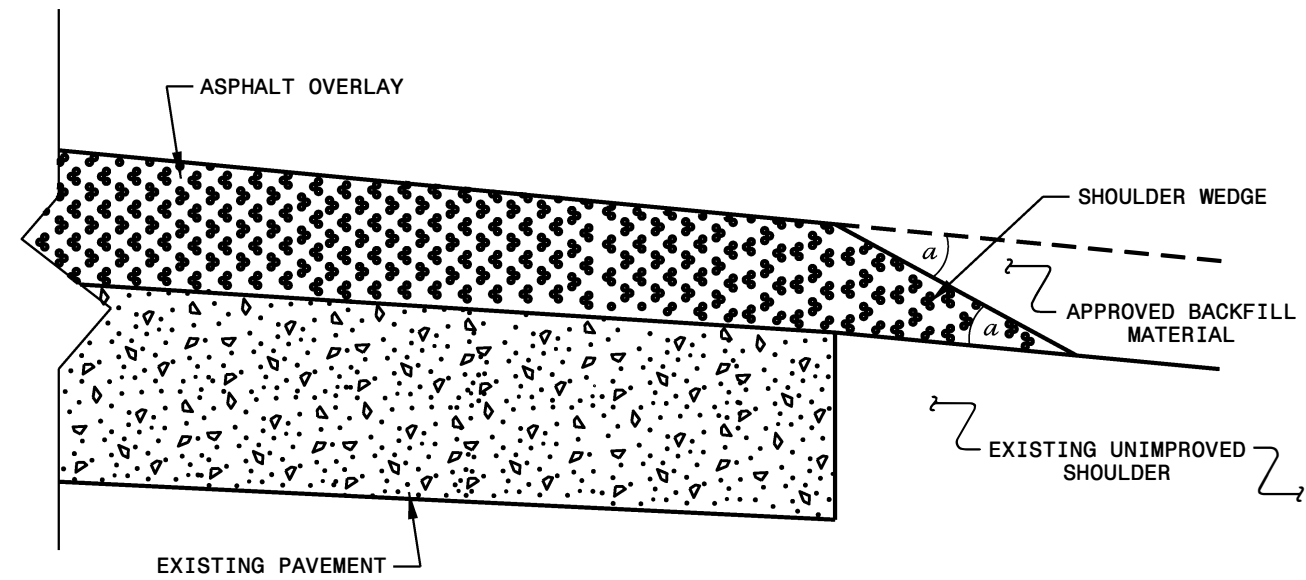


NOTES:

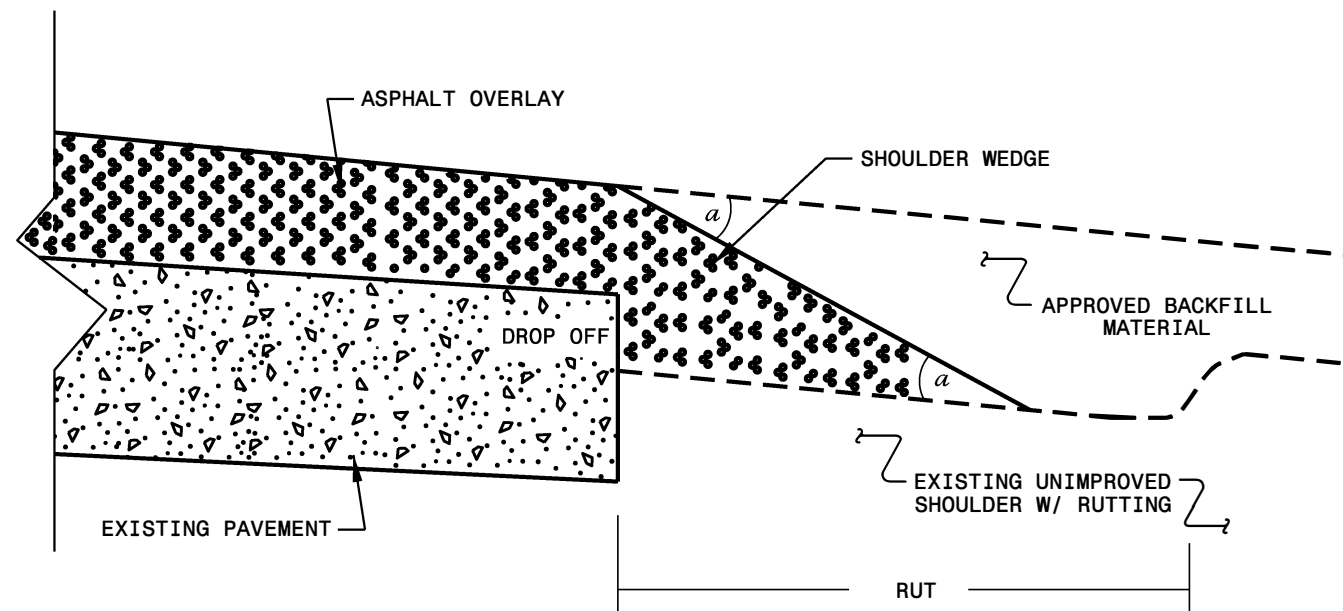
- 1) DETAIL DOES NOT APPLY TO OGAFB AND ULTRA-THIN BONDED WEARING COURSE.
- 2) BACKFILL SHOULDER WITH APPROVED MATERIAL.
- 3) THE SHOULDER WEDGE DEVICE MAY BE DISENGAGED AT PAVED DRIVEWAYS, SIDE STREETS, HIGH SHOULDERS, AND OTHER LOCATIONS NOT FEASIBLE TO CONSTRUCT AS APPROVED BY THE ENGINEER.



SHOULDER WEDGE DETAIL
 (Resurfacing Projects w/ Widening or
 with Existing Paved Shoulder having no dropoffs)



SHOULDER WEDGE DETAIL
 (Resurfacing Projects w/ NO Widening)



SHOULDER WEDGE DETAIL
 (Resurfacing Adjacent to
 Rutted Shoulder)

- SHOULDER WEDGE ANGLE = 30°

CONTRACT STANDARDS AND DEVELOPMENT UNIT	
Office 919-707-6950	FAX 919-250-4119
SHOULDER WEDGE DETAILS	
ORIGINAL BY: T.SPELL	DATE: 7-19-11
MODIFIED BY:	DATE: 2/2/16
CHECKED BY:	DATE:
FILE SPEC.: s:usr/details/stand/shoulderwedgedetail.dgn	

PROJECT NO.	SHEET NO.	TOTAL NO.
2024CPT.05.17.20351.1, 2024CPT.05.17.20921.1	13	

SUMMARY OF QUANTITIES

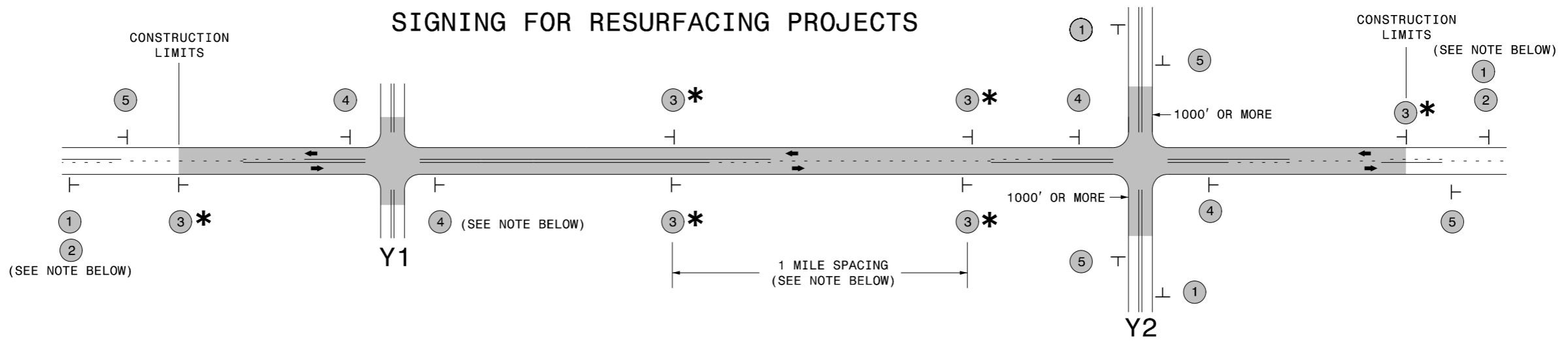
PROJECT NO	COUNTY	MAP NO	ROUTE	DESCRIPTION	TYP NO	LANES	FINAL SURFACE TESTING REQUIRED	WARM MIX ASPHALT REQUIRED	LENGTH		1220000000-E	1245000000-E	1260000000-E	1308000000-E	1330000000-E	1491000000-E	1519000000-E	1575000000-E	1704000000-E	2845000000-N		
									MI	FT	INCIDENTAL STONE BASE	SHOULDER RECONSTRUCTION	AGGREGATE SHOULDER BORROW	0" TO 1.25" MILLING	INCIDENTAL MILLING	BASE COURSE, B25.0C	SURFACE COURSE, S9.5B	ASPHALT BINDER FOR PLANT MIX	PATCHING EXISTING PAVEMENT	ADJUST METER OR VALVE BOX		
									TONS	SMI	TON	SY	SY	TONS	TONS	TON	TONS	EA				
2024CPT.05.17.20351.1	Franklin	1	SR-1924 / DREAMCATCHER TRL	FROM SR 1132 TO SR 1924	1	2	NO	NO	0.657	18	33					411	539	36	10			
		2	SR-2062 / EAGLEFEATHER PATH	FROM SR 1924 TO SR 2060	1	2	NO	NO	0.114	18	6						298	110	8	10		
		3	SR-2060 / REMINGTON CT	FROM SR 2058 TO CUL-DE-SAC	1	2	NO	NO	0.405	20	20						141	381	25	10		
		4	SR-2063 / WINCHESTER CT	FROM SR 2060 TO CUL-DE-SAC	1	2	NO	NO	0.119	20	6						140	134	9	10		
		5	SR-2061 / CHESTERFIELD CT	FROM SR 2060 TO CUL-DE-SAC	1	2	NO	NO	0.204	20	10						276	215	14	10		
		6	SR-2058 / FLEMING FOREST DR	FROM SR 1132 TO CUL-DE-SAC	1	2	NO	NO	0.429	20	21						190	427	28	10		
		7	SR-2059 / SETTLERS CT	FROM SR 2058 TO CUL-DE-SAC	1	2	NO	NO	0.071	20	4						108	95	7	10		
		8	SR-1127 / POCOMOKE RD	FROM SR 1155 TO SR 1134	2,3	2	NO	NO	1.39	19	70	2.78	257				338	370	1,547	118	20	
		9	SR-1846 / WILLOW RIDGE DR	FROM CDS TO CDS	1	2	NO	NO	0.33	20									294	20	10	
		10	SR-2010 / GLEN OAKS DR	FROM SR 1105 TO DEAD END	1	2	NO	NO	0.421	20	21						408	392	28	60	1	
		11	SR-2011 / OAK LEAF TRL	FROM SR 2010 TO CUL-DE-SAC	1	2	NO	NO	0.439	20	22						261	418	32	98		
		12	SR-2012 / FALLING LEAF DR	FROM SR 2011 TO CUL-DE-SAC	3	2	NO	NO	0.242	20	12	0.48	45				140	288	21	44		
		13	SR-2013 / TURNING LEAF CT	FROM SR 2011 TO CUL-DE-SAC	1	2	NO	NO	0.042	20	2						217	61	5	24	2	
		14	SR-2014 / SESSILE OAK WAY	FROM SR 2011 TO DEAD END	1	2	NO	NO	0.049	20	2						226	55	4	10		
		15	SR-1111 / COOKE RD	FROM SR 1103 TO SR 1103	1	2	NO	NO	2.033	20	102						1,214	1,840	120	15		
		16	SR-2065 / STONECREST DR	FROM SR 1111 TO SR 2066	1	2	NO	NO	0.119	18	6						541	114	8	10		
		17	SR-2066 / WOODRIDGE DR	FROM DEAD END TO SR 2067	1	2	NO	NO	0.119	18	6						246	108	7	10		
		18	SR-2067 / WILLOWCREST DR	FROM DEAD END TO CUL-DE-SAC	1	2	NO	NO	0.069	18	3								88	6	10	
		19	SR-1916 / BARON CIR	FROM SR 1915 TO SR1915	1	2	NO	NO	0.495	20	25								442	29	10	
		20	SR-1915 / CASTLE DR	FROM US 401 TO SR 1916	4	2	NO	NO	0.121	30	6					930	330	173	12	10		
		21	SR-1803 / THISTLE DR	FROM US 401 TO SR 1804	1	2	NO	NO	0.316	20	16						241	291	19	10		
		22	SR-1804 / THORNWOOD LN	FROM CUL-DE-SAC TO END MAINTENANCE	3	2	NO	NO	0.182	20	9	0.36	34				56	222	15	10		
		23	SR-1922 / GREEN BARK DR	FROM US 401 TO CUL-DE-SAC	1	2	NO	NO	0.242	20	12						56	239	19	63		
		24	SR-1857 / RED FERN DR	FROM SR 1855 TO CUL-DE-SAC	1	2	NO	NO	0.063	20	3						217	97	7	10	1	
		25	SR-1855 / BAILEY FARMS DR	FROM US 401 TO SR 1858	1	2	NO	NO	0.194	20	10						168	173	12	10		
		26	SR-1856 / BAILEY OAKS CT	FROM SR 1855 TO CUL-DE-SAC	1	2	NO	NO	0.043	20	2						94	72	5	10		
		27	SR-1827 / BEAVER DAM DR	FROM US 401 TO CUL-DE-SAC	1	2	NO	NO	0.358	19	18						114	322	21	10		
		28	SR-1844 / WILDERS CROSSING	FROM SR 1706 TO SR 1846	1	2	NO	NO	0.224	20	11						323	209	15	24		
		29	SR-1845 / OAK HOLLOW CT	FROM SR 1844 TO CUL-DE-SAC	1	2	NO	NO	0.043	20	2						157	72	5	10		
		30	SR-1847 / FERN CT	FROM SR 1846 TO CUL-DE-SAC	1	2	NO	NO	0.042	20	2						111	71	5	10	1	
		31	SR-1848 / WATER OAK WAY	FROM DEAD END TO CUL-DE-SAC	1	2	NO	NO	0.114	20	6						250	121	8	10		
		32	SR-1840 / CLOVIS RIDGE DR	FROM WAKE COUNTY TO SR 1839	1	2	NO	NO	0.236	20	12						160	220	15	19		
		33	SR-1841 / LENNOX PL	FROM SR 1839 TO CDS	1	2	NO	NO	0.111	20	6								127	9	10	
		34	SR-1839 / BARHAM HOLLOW DR	FROM WAKE COUNTY TO DEAD END	1	2	NO	NO	0.486	20	26								433	30	48	
		35	SR-1838 / TWO PINES TR	FROM WAKE COUNTY TO CUL-DE-SAC	1	2	NO	NO	0.344	20	17								321	23	52	
		36	SR-1837 / SNOOKS TRL	FROM WAKE COUNTY TO DEAD END	1	2	NO	NO	0.07	20	4								62	5	10	
TOTAL FOR PROJ NO. 2024CPT.05.17.20351.1											10.936		533	3.62	336	930	7,432	370	10,773	750	717	5
2024CPT.05.17.20921.1	Wake	37	SR-5457 / CLOVIS RIDGE DR	FROM SR 5453 TO FRANKLIN COUNTY	1	2	NO	NO	0.258	20	12						230	15	10			
		38	SR-5453 / BARHAM HOLLOW DR	FROM SR 2301 TO FRANKLIN COUNTY	1	2	NO	NO	0.311	20	15					340	290	19	10			
		39	SR-5458 / TWO PINES TRL	FROM SR 5453 TO FRANKLIN COUNTY	1	2	NO	NO	0.045	20	2							51	4	10		
		40	SR-5455 / SNOOKS TRL	FROM SR 5453 TO FRANKLIN COUNTY	1	2	NO	NO	0.116	20	5							111	8	10		
		41	SR-5454 / JABBO CT	FROM SR 5453 TO CUL-DE-SAC	1	2	NO	NO	0.075	20	3							98	7	10		
		42	SR-5456 / FROG HOP CT	FROM SR 5455 TO CUL-DE-SAC	1	2	NO	NO	0.055	20	3							82	6	10		
TOTAL FOR PROJ NO. 2024CPT.05.17.20921.1											0.86		40			340		862	59	60		
GRAND TOTAL											11.796		573	3.62	336	930	7,772	370	11,635	809	777	5

PROJECT NO.	SHEET NO.	TOTAL NO.
2024CPT.05.17.20351.1, 2024CPT.05.17.20921.1	14	

THERMOPLASTIC AND PAINT QUANTITIES

PROJECT NO	COUNTY	MAP NO	ROUTE	DESCRIPTION	TYP NO	LANES	LENGTH		WORK ZONE ADVANCE/GE NERAL WARNING SIGNING	TEMPORARY TRAFFIC CONTROL	4" X 90 M WHITE THERMO	4" X 90 M YELLOW THERMO				
							MI	FT					SF	LS	LF	LF
													4413000000-E	4457000000-N	4685000000-E	4685000000-E
2024CPT.05.17.20351.1	Franklin	1	SR-1924 / DREAMCATCHER TRL	FROM SR 1132 TO SR 1924	1	2	0.657	18	74	0.04						
		2	SR-2062 / EAGLEFEATHER PATH	FROM SR 1924 TO SR 2060	1	2	0.114	18	13	0.01						
		3	SR-2060 / REMINGTON CT	FROM SR 2058 TO CUL-DE-SAC	1	2	0.405	20	45	0.02						
		4	SR-2063 / WINCHESTER CT	FROM SR 2060 TO CUL-DE-SAC	1	2	0.119	20	13	0.01						
		5	SR-2061 / CHESTERFIELD CT	FROM SR 2060 TO CUL-DE-SAC	1	2	0.204	20	23	0.02						
		6	SR-2058 / FLEMING FOREST DR	FROM SR 1132 TO CUL-DE-SAC	1	2	0.429	20	48	0.03						
		7	SR-2059 / SETTLERS CT	FROM SR 2058 TO CUL-DE-SAC	1	2	0.071	20	8	0.01						
		8	SR-1127 / POCOMOKE RD	FROM SR 1155 TO SR 1134	2,3	2	1.39	19	156	0.09		14,682	14,682			
		9	SR-1846 / WILLOW RIDGE DR	FROM CDS TO CDS	1	2	0.33	20	37	0.02						
		10	SR-2010 / GLEN OAKS DR	FROM SR 1105 TO DEAD END	1	2	0.421	20	47	0.03						
		11	SR-2011 / OAK LEAF TRL	FROM SR 2010 TO CUL-DE-SAC	1	2	0.439	20	49	0.03						
		12	SR-2012 / FALLING LEAF DR	FROM SR 2011 TO CUL-DE-SAC	3	2	0.242	20	27	0.02						
		13	SR-2013 / TURNING LEAF CT	FROM SR 2011 TO CUL-DE-SAC	1	2	0.042	20	5	0.01						
		14	SR-2014 / SESSILE OAK WAY	FROM SR 2011 TO DEAD END	1	2	0.049	20	6	0.01						
		15	SR-1111 / COOKE RD	FROM SR 1103 TO SR 1103	1	2	2.033	20	228	0.12		21,472	21,166			
		16	SR-2065 / STONECREST DR	FROM SR 1111 TO SR 2066	1	2	0.119	18	13	0.01						
		17	SR-2066 / WOODRIDGE DR	FROM DEAD END TO SR 2067	1	2	0.119	18	13	0.01						
		18	SR-2067 / WILLOWCREST DR	FROM DEAD END TO CUL-DE-SAC	1	2	0.069	18	8	0.01						
		19	SR-1916 / BARON CIR	FROM SR 1915 TO SR1915	1	2	0.495	20	46	0.03						
		20	SR-1915 / CASTLE DR	FROM US 401 TO SR 1916	4	2	0.121	30	14	0.01						
		21	SR-1803 / THISTLE DR	FROM US 401 TO SR 1804	1	2	0.316	20	35	0.02						
		22	SR-1804 / THORNWOOD LN	FROM CUL-DE-SAC TO END MAINTENANCE	3	2	0.182	20	20	0.02						
		23	SR-1922 / GREEN BARK DR	FROM US 401 TO CUL-DE-SAC	1	2	0.242	20	27	0.16						
		24	SR-1857 / RED FERN DR	FROM SR 1855 TO CUL-DE-SAC	1	2	0.063	20	7	0.01						
		25	SR-1855 / BAILEY FARMS DR	FROM US 401 TO SR 1858	1	2	0.194	20	22	0.02						
		26	SR-1856 / BAILEY OAKS CT	FROM SR 1855 TO CUL-DE-SAC	1	2	0.043	20	5	0.01						
		27	SR-1827 / BEAVER DAM DR	FROM US 401 TO CUL-DE-SAC	1	2	0.358	19	40	0.02						
		28	SR-1844 / WILDERS CROSSING	FROM SR 1706 TO SR 1846	1	2	0.224	20	25	0.02						
		29	SR-1845 / OAK HOLLOW CT	FROM SR 1844 TO CUL-DE-SAC	1	2	0.043	20	5	0.01						
		30	SR-1847 / FERN CT	FROM SR 1846 TO CUL-DE-SAC	1	2	0.042	20	5	0.01						
		31	SR-1848 / WATER OAK WAY	FROM DEAD END TO CUL-DE-SAC	1	2	0.114	20	13	0.01						
		32	SR-1840 / CLOVIS RIDGE DR	FROM WAKE COUNTY TO SR 1839	1	2	0.236	20	26	0.02						
		33	SR-1841 / LENNOX PL	FROM SR 1839 TO CDS	1	2	0.111	20	12	0.01						
		34	SR-1839 / BARHAM HOLLOW DR	FROM WAKE COUNTY TO DEAD END	1	2	0.486	20	54	0.03						
		35	SR-1838 / TWO PINES TR	FROM WAKE COUNTY TO CUL-DE-SAC	1	2	0.344	20	5	0.01						
		36	SR-1837 / SNOOKS TRL	FROM WAKE COUNTY TO DEAD END	1	2	0.07	20	8	0.01						
TOTAL FOR PROJ NO. 2024CPT.05.17.20351.1							10.936		1,182	0.93	36,154	35,848				
2024CPT.05.17.20921.1	Wake	37	SR-5457 / CLOVIS RIDGE DR	FROM SR 5453 TO FRANKLIN COUNTY	1	2	0.258	20	29	0.01						
		38	SR-5453 / BARHAM HOLLOW DR	FROM SR 2301 TO FRANKLIN COUNTY	1	2	0.311	20	35	0.02						
		39	SR-5458 / TWO PINES TRL	FROM SR 5453 TO FRANKLIN COUNTY	1	2	0.045	20	39	0.01						
		40	SR-5455 / SNOOKS TRL	FROM SR 5453 TO FRANKLIN COUNTY	1	2	0.116	20	13	0.01						
		41	SR-5454 / JABBO CT	FROM SR 5453 TO CUL-DE-SAC	1	2	0.075	20	8	0.01						
		42	SR-5456 / FROG HOP CT	FROM SR 5455 TO CUL-DE-SAC	1	2	0.055	20	6	0.01						
TOTAL FOR PROJ NO. 2024CPT.05.17.20921.1							0.86		130	0.070						
GRAND TOTAL							11.796		1,312	1.00	36,154	35,848				
72,002																

SIGNING FOR RESURFACING PROJECTS



LEGEND
 | STATIONARY SIGN
 ← DIRECTION OF TRAFFIC FLOW

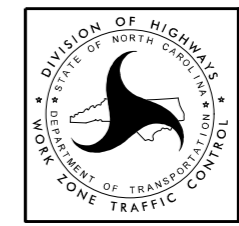
MAINLINE (-L-) SIGNING

-Y- LINE SIGNING

SIGNING NOTES AND PLACEMENT PER DIRECTION	<p>1</p> <p>2</p>	<p>PLACE 1000' PRIOR TO BEGINNING OF CONSTRUCTION LIMITS. ONLY USED ON -Y- LINES IF RESURFACING LIMITS EXTEND 1000' ALONG -Y- LINE.</p> <p>#2 SIGN ONLY USED WHEN RESURFACING LIMITS ARE 2 OR MORE MILES IN LENGTH. ROUND UP TO NEXT WHOLE NUMBER. (NO FRACTIONAL OR DECIMAL NUMBERS)</p>	<p>NO REQUIRED STATIONARY SIGNING FOR THE FOLLOWING -Y- LINE CONDITIONS:</p> <ol style="list-style-type: none"> LESS THAN 1000' OF RESURFACING ALONG -Y- LINE SUBDIVISION ROADS DEAD END ROADS <p>WHEN PAVING/CONSTRUCTION ACTIVITIES PROCEED ACROSS AN UNSIGNED -Y- LINE, ADVANCE WARNING PORTABLE SIGNS SHALL BE USED ALONG THE -Y- LINE AS SHOWN BELOW. REMOVE UPON COMPLETION OF WORK.</p> <p>PLACED 500' IN ADVANCE OF FLAGGER. PLACED 250' IN ADVANCE OF FLAGGER.</p>
	<p>3 *</p>	<p>PLACE INITIALLY AT THE CONSTRUCTION LIMITS AND SPACED 1 MILE APART THEREAFTER. IF NO -Y- LINES EXIST, PLACE 2ND SET 1/2 MILE FROM THE CONSTRUCTION LIMITS AND THEN SPACE 1 MILE THEREAFTER.</p>	
	<p>4</p>	<p>THESE ARE FOR -Y- LINES THAT ARE "THROUGH" ROADWAYS. DEAD END AND SUBDIVISION ROADS ARE NOT "THROUGH" ROADWAYS. INSTALL 500' +/- FROM EACH -Y- LINE APPROACH AS SHOWN ABOVE. FOR MULTIPLE -Y- LINES THAT ARE SEPARATED BY 0.25 MILES OR LESS, TREAT AS A SINGLE UNIT AND INSTALL WITHIN 500' OF EACH APPROACH. A MAXIMUM OF 2 SIGN SETS PER MILE. DO NOT INSTALL WHEN -Y- LINES ARE WITHIN 0.5 MILES FROM "END ROAD WORK" SIGN.</p>	
	<p>5</p>	<p>PLACE 500' FOLLOWING THE END OF CONSTRUCTION LIMITS.</p>	

* SIGNING FOR ASPHALT SURFACE TREATMENTS (ONLY)

SUBSTITUTE LOW/SOFT SHOULDER SIGNS BY ALTERNATING THE FOLLOWING TWO SIGNS: STARTING WITH "UNMARKED PAVEMENT AHEAD" (SP 06026) FOLLOWED BY "LOOSE GRAVEL" (W8-7).



RESURFACING ADVANCE WARNING SIGNS FOR RURAL AND SUBURBAN 2 LANE ROADWAYS

6/7/2024 8:17 AM WZTC:\Apps\WorkZoneGenerator\ExternalWebPage\DesRes\Documents\Resurfacing\Resurfacing_AdvWarn_2Ln.dgn User:mgarrrett