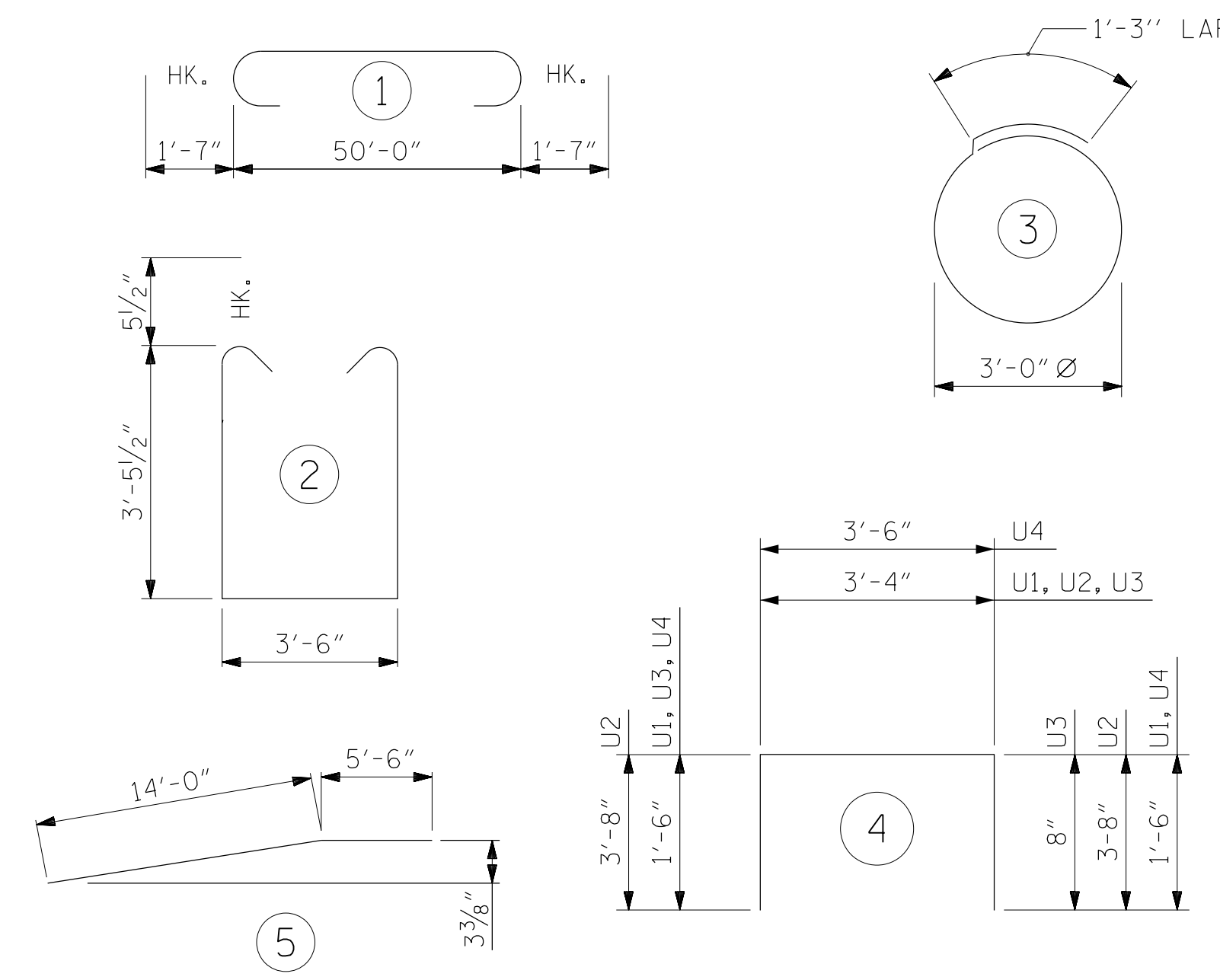


BAR TYPES

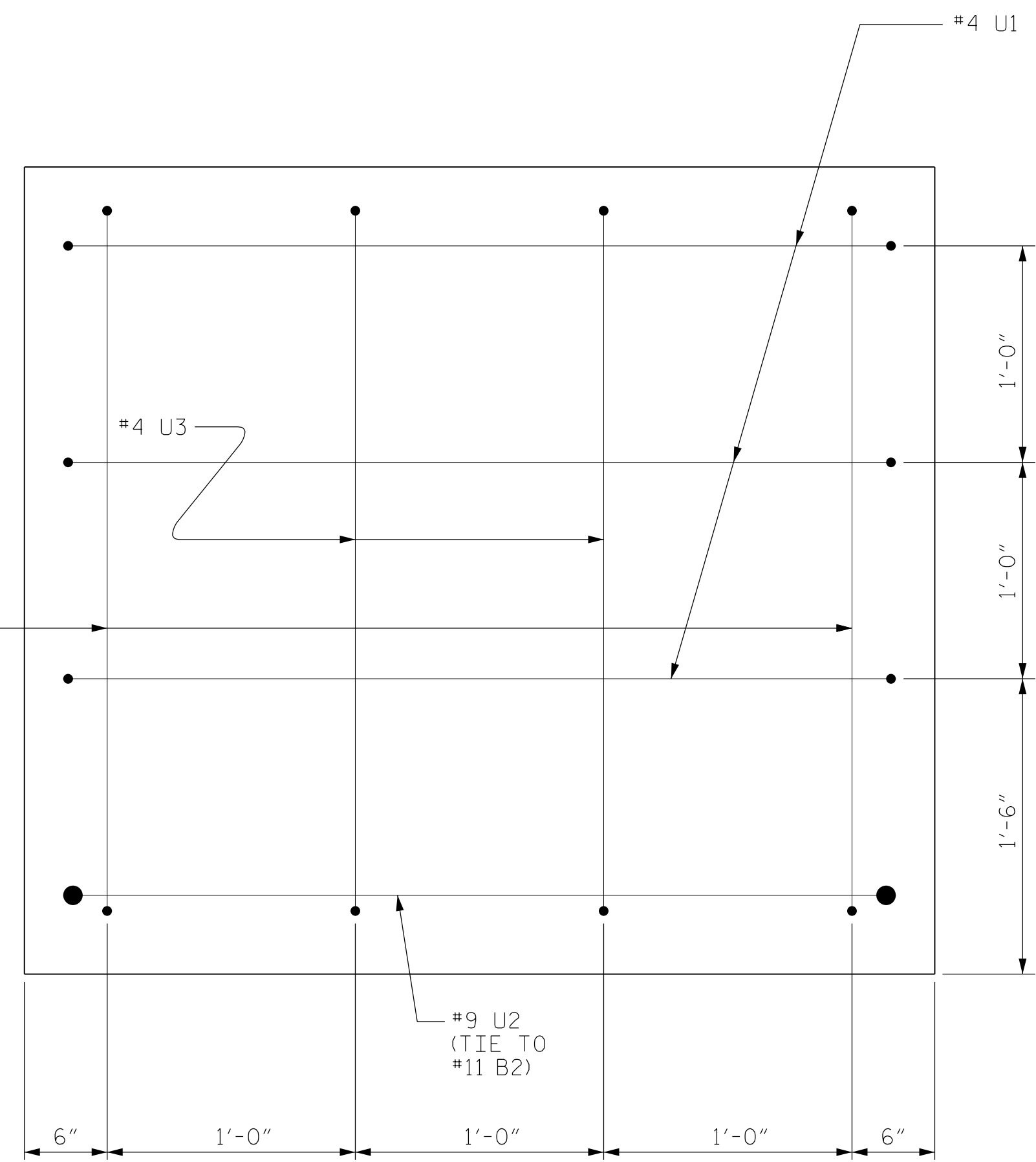
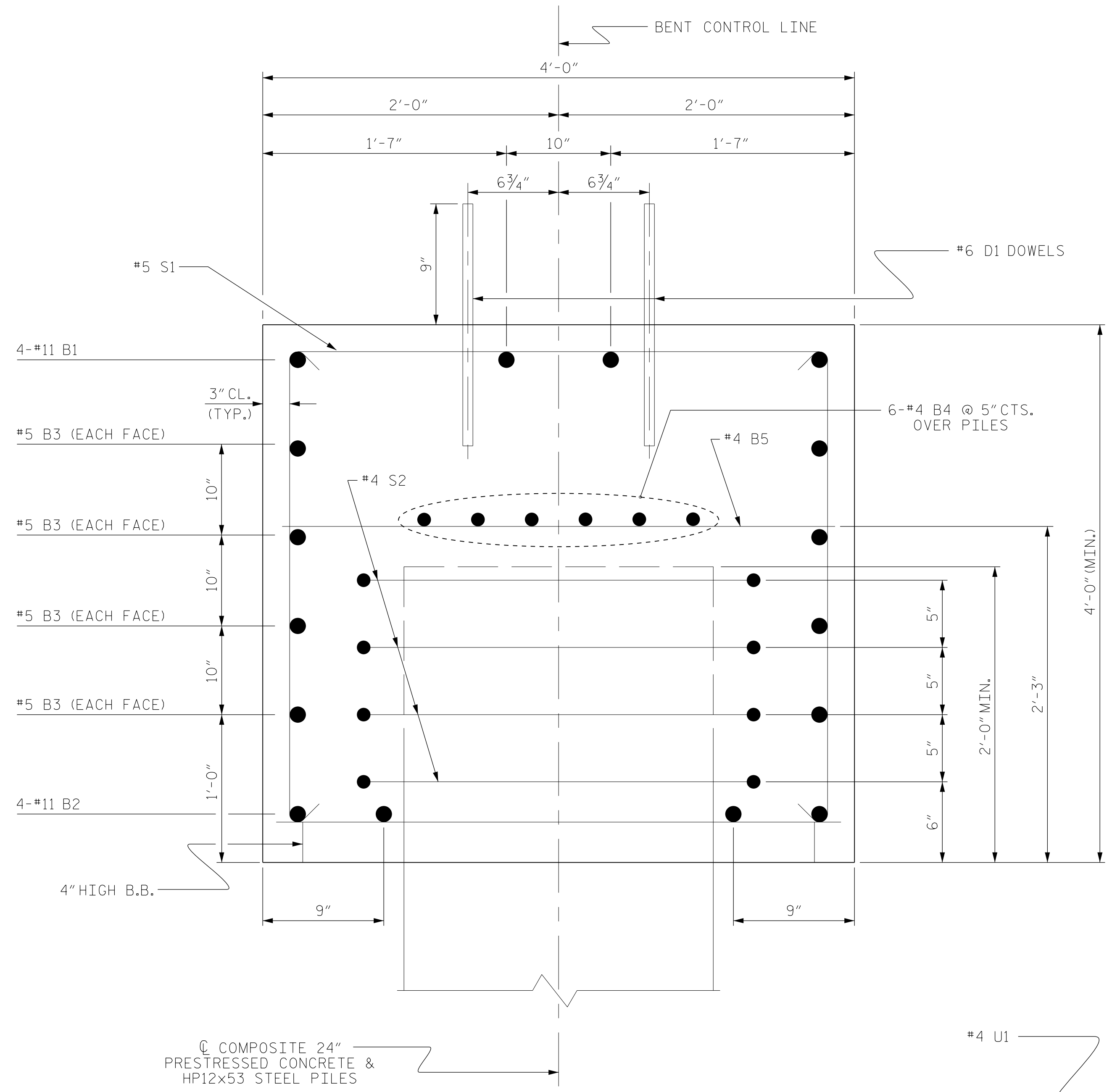


ALL BAR DIMENSIONS ARE OUT TO OUT.

BILL OF MATERIAL FOR ONE BENT

BAR	NO.	SIZE	TYPE	LENGTH	WEIGHT
* B1	4	#11	1	53'-2"	1,130
* B2	4	#11	STR	50'-0"	1,063
* B3	8	#5	STR	50'-0"	417
* B4	12	#4	STR	26'-6"	212
* B5	13	#4	STR	3'-6"	30
* B6	8	#4	5	19'-6"	104
* D1	64	#6	STR	1'-6"	144
* S1	43	#5	2	11'-4"	508
* S2	4	#4	3	10'-9"	29
* U1	10	#4	4	6'-4"	42
* U2	2	#9	4	10'-8"	73
* U3	4	#4	4	5'-6"	15
* U4	23	#4	4	6'-6"	100
* EPOXY COATED REINFORCING STEEL					3,867 LBS.
TOTAL CLASS AA CONCRETE					▲ 29.4 C.Y.
PILE DRIVING EQUIPMENT SETUP FOR HP 12x53 GALVANIZED STEEL PILES					NO. 8
24" PRESTRESSED CONCRETE PILES					NO. 8
					LIN. FT. 160
HP 12x53 PILES					NO. 8
					LIN. FT. 400

▲ CONCRETE DISPLACED BY THE 24" PRESTRESSED CONCRETE PILES HAS BEEN DEDUCTED FROM THE CONCRETE QUANTITY.



DocuSigned by:
Jeffrey C. Wilson
4/8/2024
84430599F4642A

DOCUMENT NOT CONSIDERED FINAL UNLESS ALL SIGNATURES COMPLETED

Firm License No. C-1051
223 S West St,
Suite 1100
Raleigh, NC 27603
T 919.380.8750
www.stewartinc.com

STEWART

PROJECT NO. B-5610
DARE COUNTY
STATION: 15+42.50 -L-
SHEET 2 OF 2

STATE OF NORTH CAROLINA DEPARTMENT OF TRANSPORTATION RALEIGH					
SUBSTRUCTURE					
BENT 1					
REVISIONS					
NO.	BY:	DATE:	NO.	BY:	DATE:
1			3		
2			4		

SHEET NO. S-24
TOTAL SHEETS 29

4/4/2024
DRAWN BY: G. RAMBOULI DATE: 1/24
CHECKED BY: J. WILSON DATE: 1/24
DESIGN ENGINEER OF RECORD: J. WILSON DATE: 1/24

B-5610
B-5610-SMUJ_B2-270008.dgn
USER: jwilson