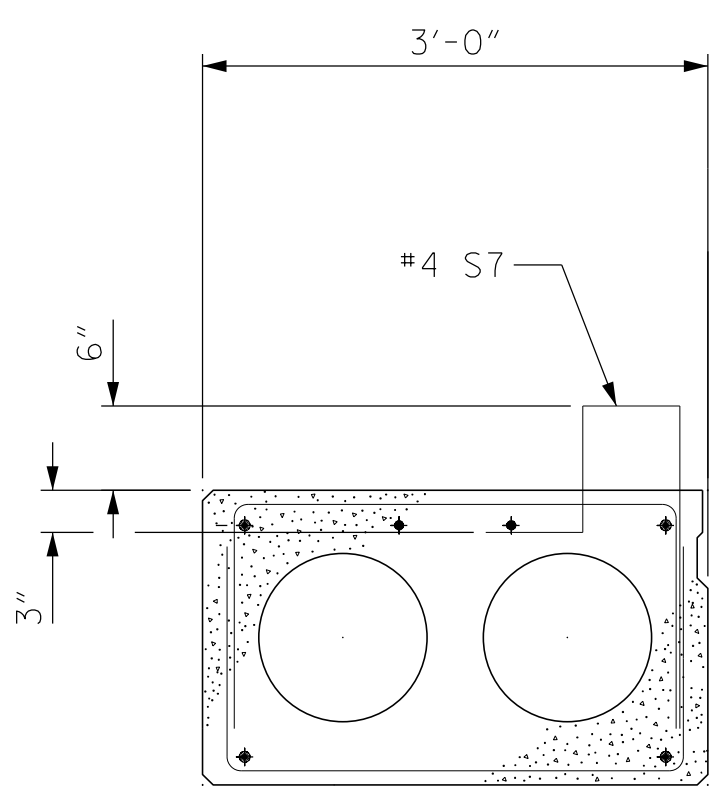
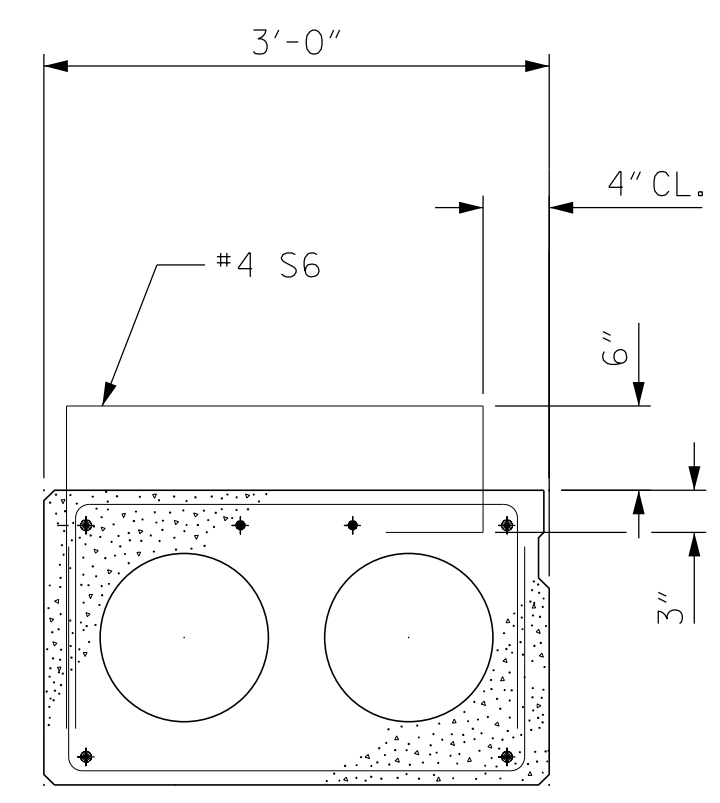


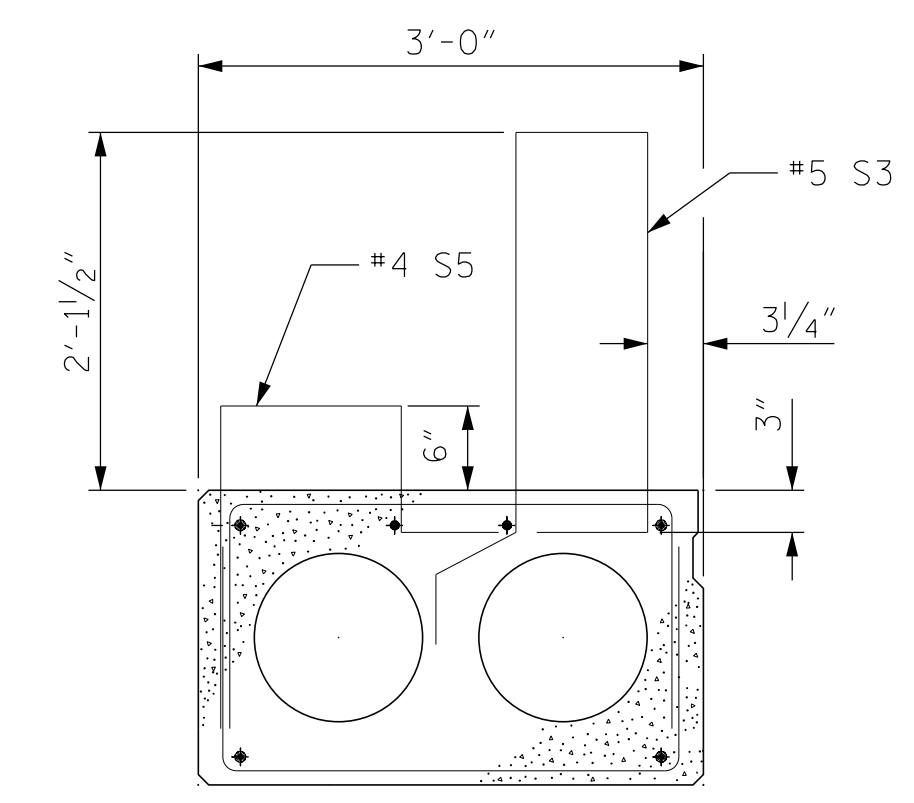
TYPE I - INTERIOR  
SLAB SECTION  
(45' UNIT)  
(13 STRANDS REQUIRED)



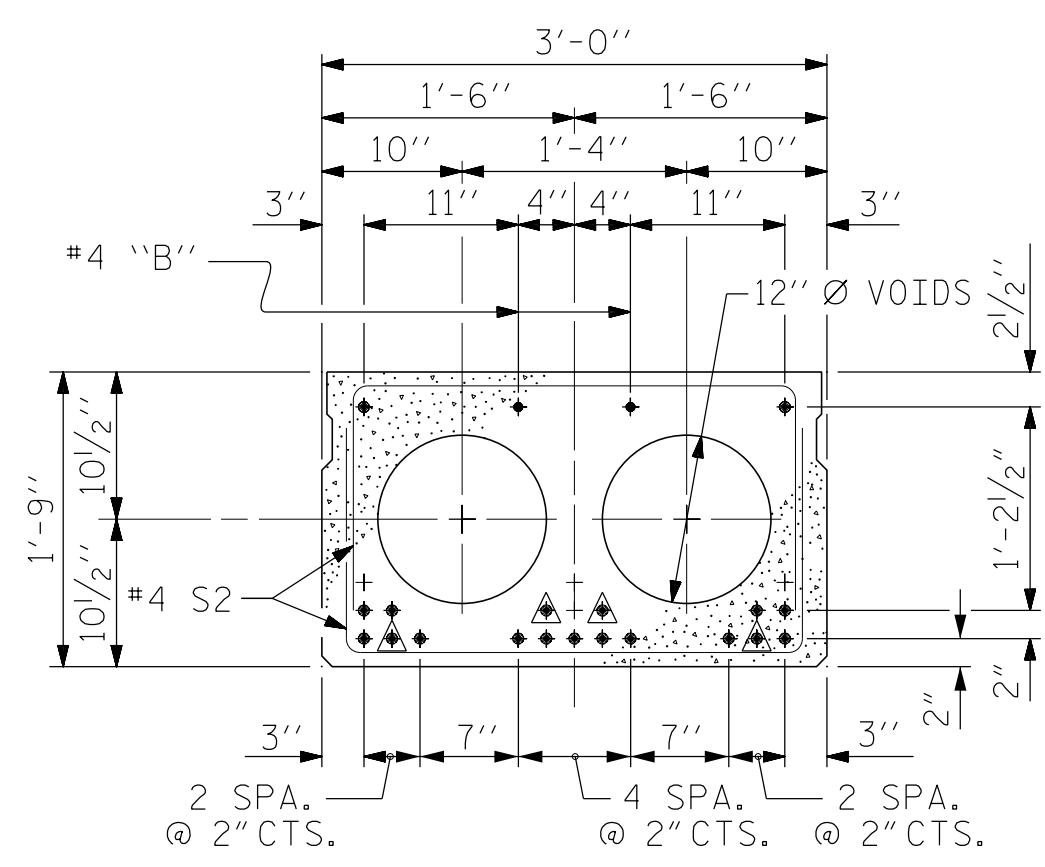
TYPE II - INTERIOR  
SLAB SECTION @  
SIDEWALK  
(FOR PRESTRESSED STRAND LAYOUT, SEE  
TYPE I UNIT.)



TYPE III - INTERIOR  
SLAB SECTION @  
SIDEWALK  
(FOR PRESTRESSED STRAND LAYOUT, SEE  
TYPE I UNIT.)



TYPE IV - EXTERIOR  
SLAB SECTION  
(FOR PRESTRESSED STRAND LAYOUT, SEE  
TYPE I UNIT.)



TYPE I - INTERIOR  
SLAB SECTION  
(50' UNIT)  
(19 STRANDS REQUIRED)

0.6" Ø LOW  
RELAXATION STRAND LAYOUT

- ▲ BOND SHALL BE BROKEN ON THESE STRANDS FOR A DISTANCE OF 6'-0" FROM END OF CORED SLAB UNIT. SEE STANDARD SPECIFICATIONS, ARTICLE 1078-7.
- BOND SHALL BE BROKEN ON THESE STRANDS FOR A DISTANCE OF 2'-0" FROM END OF CORED SLAB UNIT. SEE STANDARD SPECIFICATIONS, ARTICLE 1078-7.
- OPTIONAL FULL LENGTH DEBONDED STRANDS. THESE STRANDS ARE NOT REQUIRED. IF THE FABRICATOR CHOOSES TO INCLUDE THESE STRANDS IN THE CORED SLAB UNIT, THE STRANDS SHALL BE DEBONDED FOR THE FULL LENGTH OF THE UNIT AT NO ADDITIONAL COST. SEE STANDARD SPECIFICATIONS, ARTICLE 1078-7.

DEBONDING LEGEND

PROJECT NO. B-5610  
DARE COUNTY  
STATION: 15+42.50 -L-

SHEET 2 OF 5



DocuSigned by:  
*Jeffrey C. Wilson* 4/8/2024  
84430599F4642A  
DOCUMENT NOT CONSIDERED  
FINAL UNLESS ALL  
SIGNATURES COMPLETED

**STEWART**  
Firm License No. C-1051  
223 S West St,  
Suite 1100  
Raleigh, NC 27603  
T 919.380.8750  
www.stewartinc.com

STATE OF NORTH CAROLINA  
DEPARTMENT OF TRANSPORTATION  
RALEIGH  
3'-0" X 1'-9"  
PRESTRESSED CONCRETE  
CORED SLAB UNIT  
90° SKEW

REVISIONS						SHEET NO.
NO.	BY:	DATE:	NO.	BY:	DATE:	S-8
1			3			TOTAL SHEETS
2			4			29

DRAWN BY: G. RAMBOULI DATE: 1/24  
CHECKED BY: J. WILSON DATE: 1/24  
DESIGN ENGINEER OF RECORD: J. WILSON DATE: 1/24

B-5610  
4/4/2024  
B-5610-SMUJ\_CS2\_270008.dgn  
USER: jwilson