

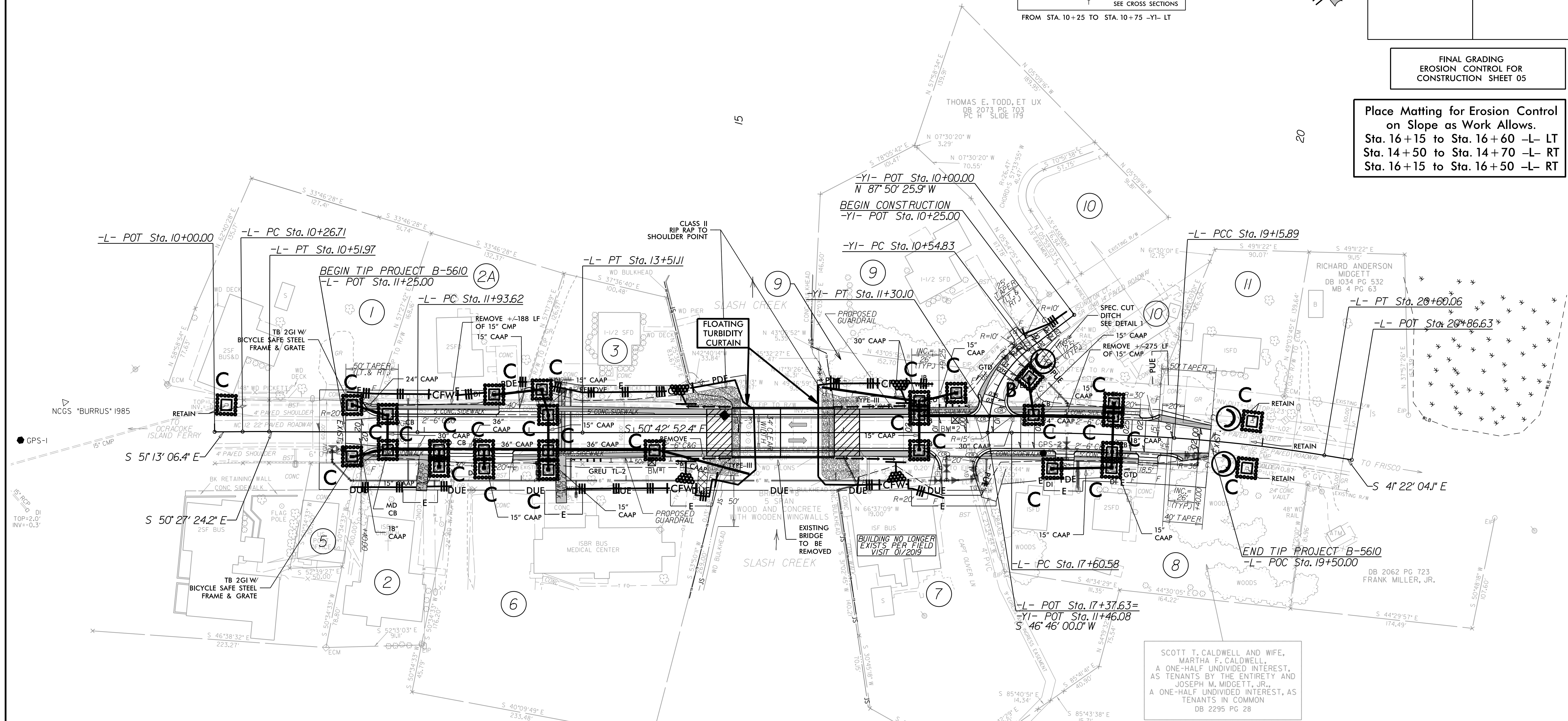
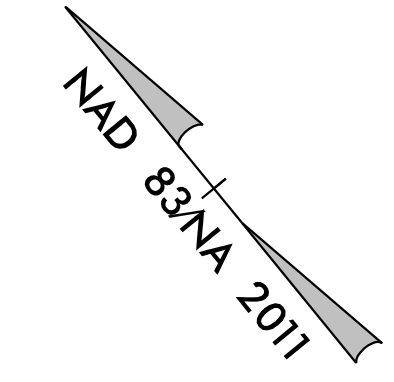
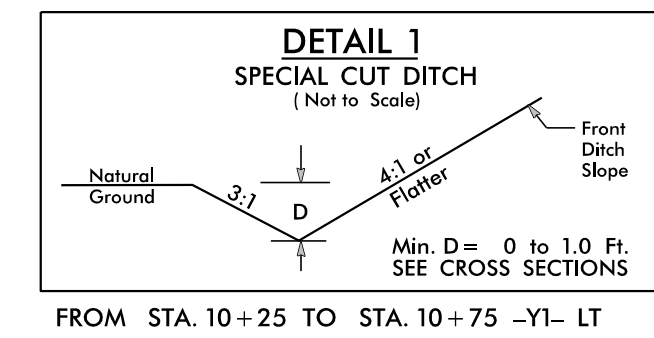
NOTE:
UTILIZE TEMPORARY SEDIMENT BASIN OR SPECIAL STILLING BASIN(S) AS STILLING BASIN WHERE APPLICABLE.

NOTE:
UTILIZE FABRIC INSERT INLET PROTECTION IN LIEU OF ROCK INLET SEDIMENT TRAPS, TYPE-C AS DIRECTED TO AVOID IMPOUNDMENT OF RUNOFF IN ROADWAY OPEN TO TRAFFIC.

PROJECT REFERENCE NO. B-5610	SHEET NO. EC-05/CONST.04
RW SHEET NO.	
ROADWAY DESIGN ENGINEER	HYDRAULICS ENGINEER

FINAL GRADING
EROSION CONTROL FOR
CONSTRUCTION SHEET 05

Place Matting for Erosion Control
on Slope as Work Allows.
Sta. 16+15 to Sta. 16+60 -L- LT
Sta. 14+50 to Sta. 14+70 -L- RT
Sta. 16+15 to Sta. 16+50 -L- RT



1 DROVER LLC DB 1992 PG 95 PC B SLIDE 348	2A HATTERAS UNITED METHODIST CHURCH DB 139 PG 506	2 HATTERAS UNITED METHODIST CHURCH DB 1617 PG 299 DB 3 PG 278 DB A PG 480 DB B PG 420	3 DARREL ALLEN DANIELS, ET UX DB 1670 PG 104 MB 2 PG 225	9 JEFFREY LYNN ODEN DB 1904 PG 519 PB 338 PG 569	5 HATTERAS VILLAGE CIVIC ASSOCIATION INC. DB 974 PG 546 DB 1954 PG 41 DB 1994 PG 306 DB 125 PG 376
6 HATTERAS VILLAGE MEDICAL ASSOCIATES DB 130 PG 591	7 PALMATIER, LLC DB 2600 PG 903	8 SEE PROPERTY OWNER INFO (THIS SHEET)	9 JEFFREY LYNN ODEN, ET UX DB 1558 PG 70 PC H SLIDE 179	10 CHRISTY D. KELLUM DB 1957 PG 308 PC H SLIDE 179	11 RICHARD ANDERSON MIDGETT DB 2545 PG 879