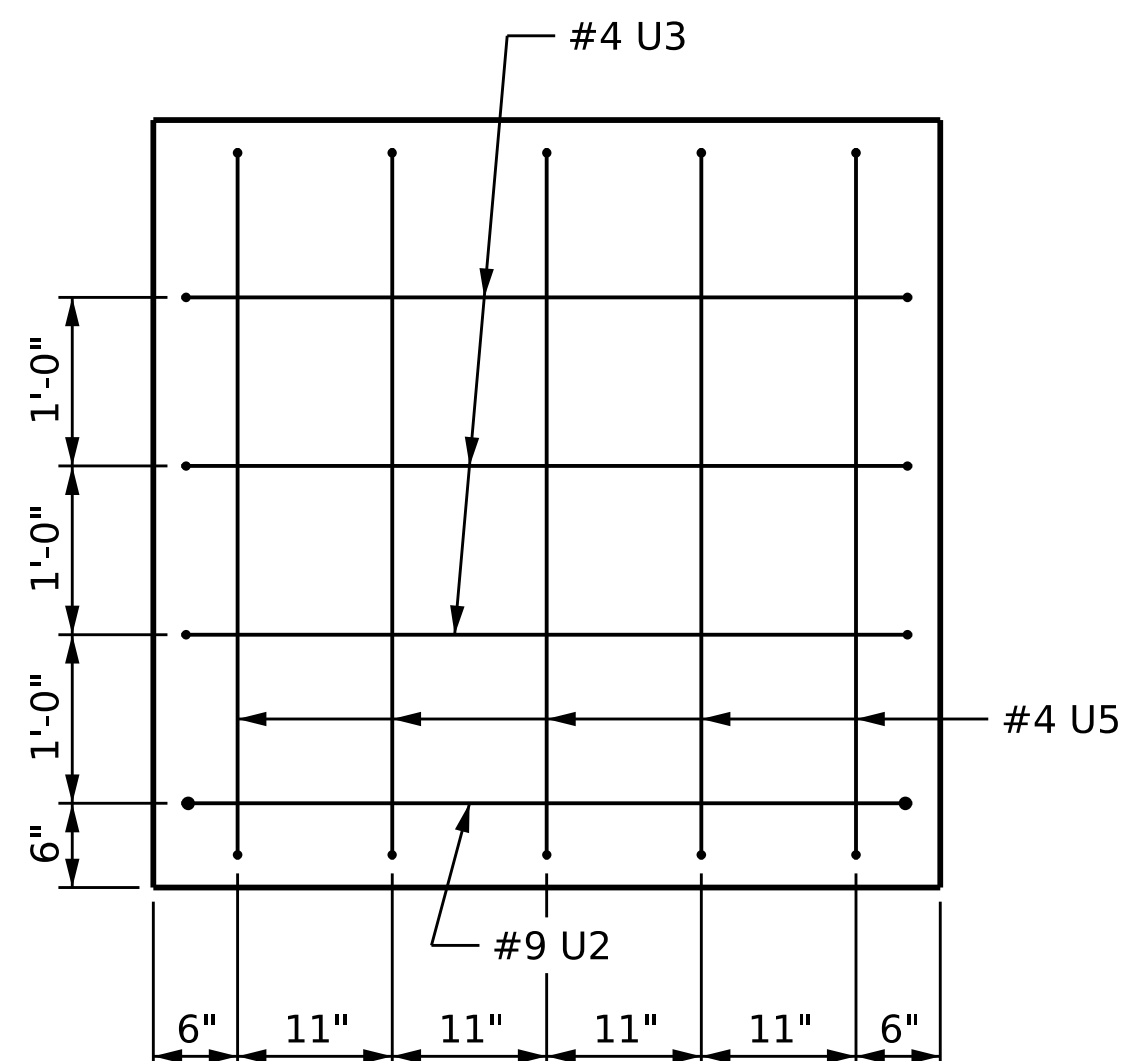
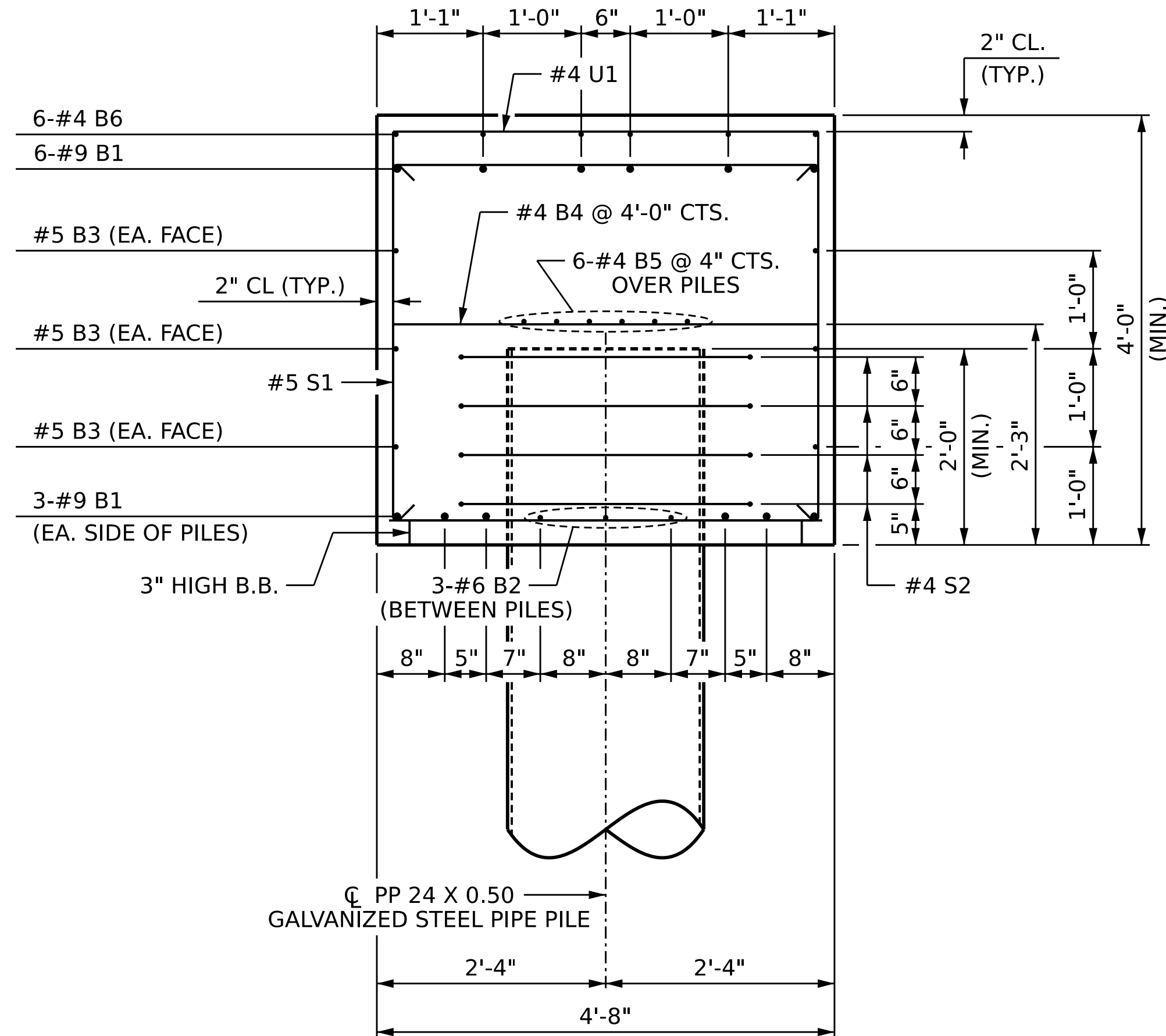


**VIEW X-X**

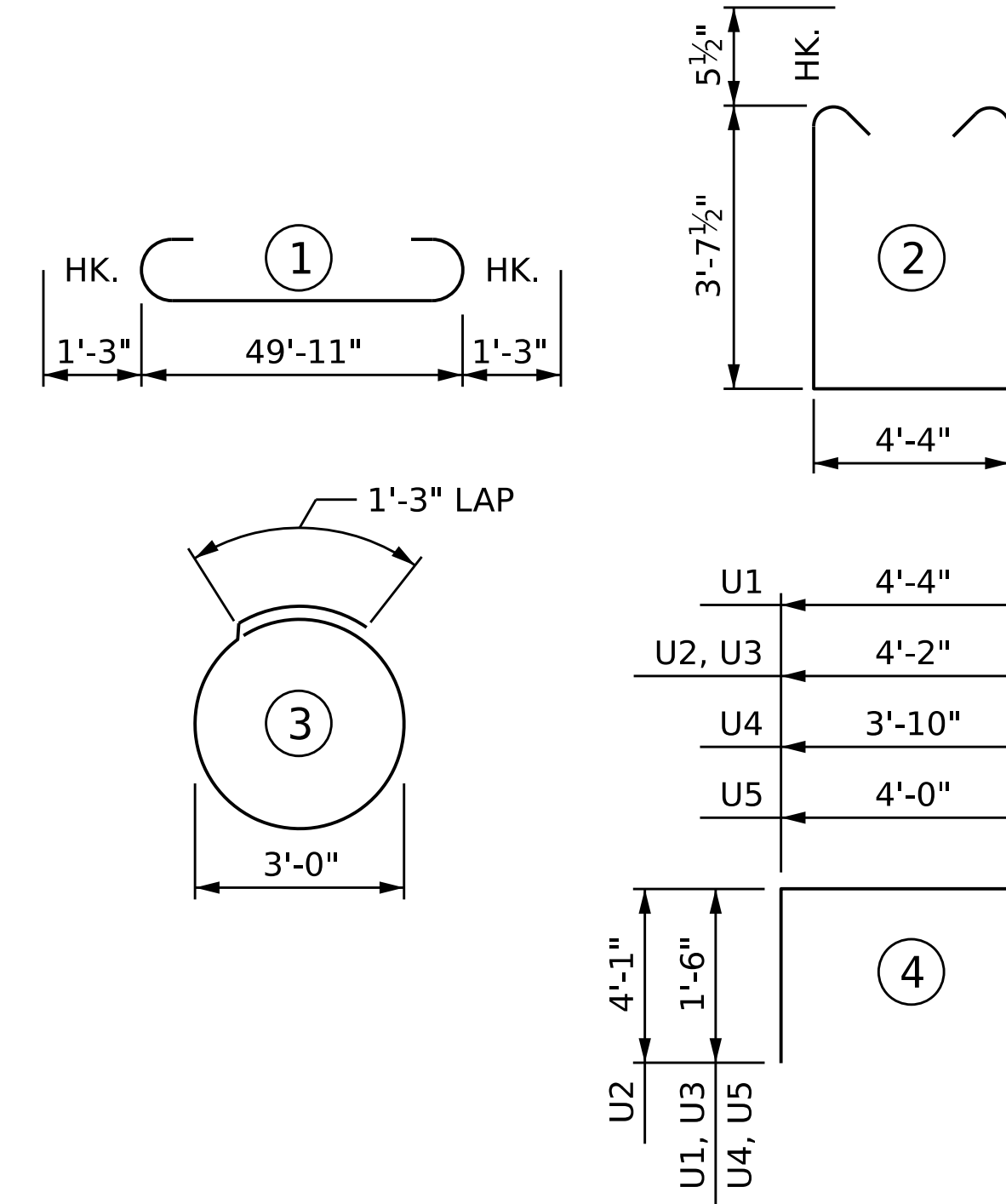


**VIEW Y-Y**



**SECTION A-A**

**BAR TYPES**



ALL BAR DIMENSIONS ARE OUT TO OUT

**BILL OF MATERIAL**

**BENT 2**

BAR	NO.	SIZE	TYPE	LENGTH	WEIGHT
B1	12	#9	1	52'-5"	2139
B2	18	#6	STR	5'-4"	144
B3	6	#5	STR	50'-1"	313
B4	13	#4	STR	4'-4"	38
B5	12	#4	STR	26'-3"	210
B6	18	#4	STR	9'-2"	110
B7	6	#4	STR	4'-2"	17
S1	76	#5	2	12'-6"	991
S2	28	#4	3	10'-9"	201
U1	45	#4	4	7'-4"	220
U2	2	#9	4	12'-4"	84
U3	6	#4	4	7'-2"	29
U4	5	#4	4	6'-10"	23
U5	5	#4	4	7'-0"	23

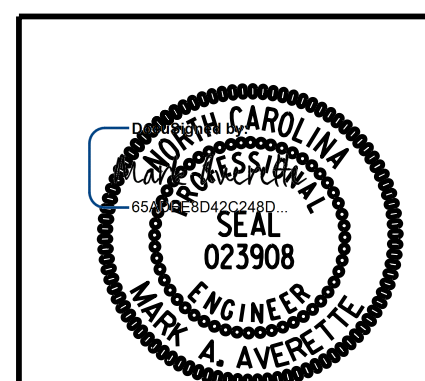
TOTAL REINFORCING STEEL 4542 LB

TOTAL CLASS A CONCRETE \*\*\* 34.7 CY

\*\*\* CONCRETE DISPLACED BY THE PP 24 X 0.50 GALVANIZED STEEL PILES HAS BEEN DEDUCTED FROM THE CONCRETE QUANTITY.

12/21/2023 1:49:44 PM c:\pwworking\cecom\_ds21\_na\_2020\d0252774\I2513AA\_SMU\_B4\_100902.dgn

DRAWN BY : S.D. COOPER DATE : 12-23  
 CHECKED BY : M.A. AVERETTE DATE : 12-23  
 DESIGN ENGINEER OF RECORD: M.A. AVERETTE DATE : 12-23



PROJECT NO. I-2513AA/AB  
BUNCOMBE COUNTY  
 STATION: 20+16.70 -Y5RPA-

SHEET 2 OF 2

STATE OF NORTH CAROLINA  
 DEPARTMENT OF TRANSPORTATION  
 RALEIGH  
 SUBSTRUCTURE

**BENT 2**

**REVISIONS**

NO.	BY:	DATE:	NO.	BY:	DATE:	SHEET NO.
1			3			5-40
2			4			TOTAL SHEETS 49

DOCUMENT NOT CONSIDERED FINAL  
 UNLESS ALL SIGNATURES COMPLETED