



PROJECT REFERENCE NO.	I-2513 AA/AB	SHEET NO.	UC-6
DESIGNED BY:	JKC		
DRAWN BY:	JKC		
CHECKED BY:	CLS		
APPROVED BY:	CDB		
REVISED:			
NORTH CAROLINA DEPARTMENT OF TRANSPORTATION		UTILITY CONSTRUCTION PLANS ONLY	
UTILITIES ENGINEERING SEC. DB 118 PG 116 PB 19 PG 87		PHONE: (919) 707-6690 FAX: (919) 250-4151	

**DOCUMENT NOT CONSIDERED FINAL UNLESS ALL SIGNATURES COMPLETED**

SEE SHEET UC-12 FOR SEWER LINE 4 PROFILE  
SEE SHEET UC-13 FOR SEWER LINE 5 PROFILE

**NOTE:**  
THE ESTIMATED QUANTITY OF DUCTILE IRON WATER PIPE FITTINGS ON THIS PLAN SHEET IS 400 POUNDS. THE ACTUAL QUANTITY AND TYPE OF FITTINGS WILL VARY BASED ON FIELD CONDITIONS.

4' DIA. UTILITY MANHOLE A4  
STA. 0+00, LINE 4  
238.74' LT OF LINE -Y-,  
STA. 71+51.93  
4' OF UTILITY MANHOLE WALL  
4' DIA  
REMOVE 1 MANHOLE

728' OF ABANDON 8" UTILITY PIPE  
ABANDON 2 UTILITY MANHOLES

87' OF 6" WATER LINE (DI RJ, PC 350) USE CONCRETE BLOCKING AT TIE-IN POINTS. SEE DETAIL SHEET UC-3D MAINTAIN 2' BELOW PROPOSED DRAINAGE PIPE

116' OF 8" SEWER (DI, PC 350)

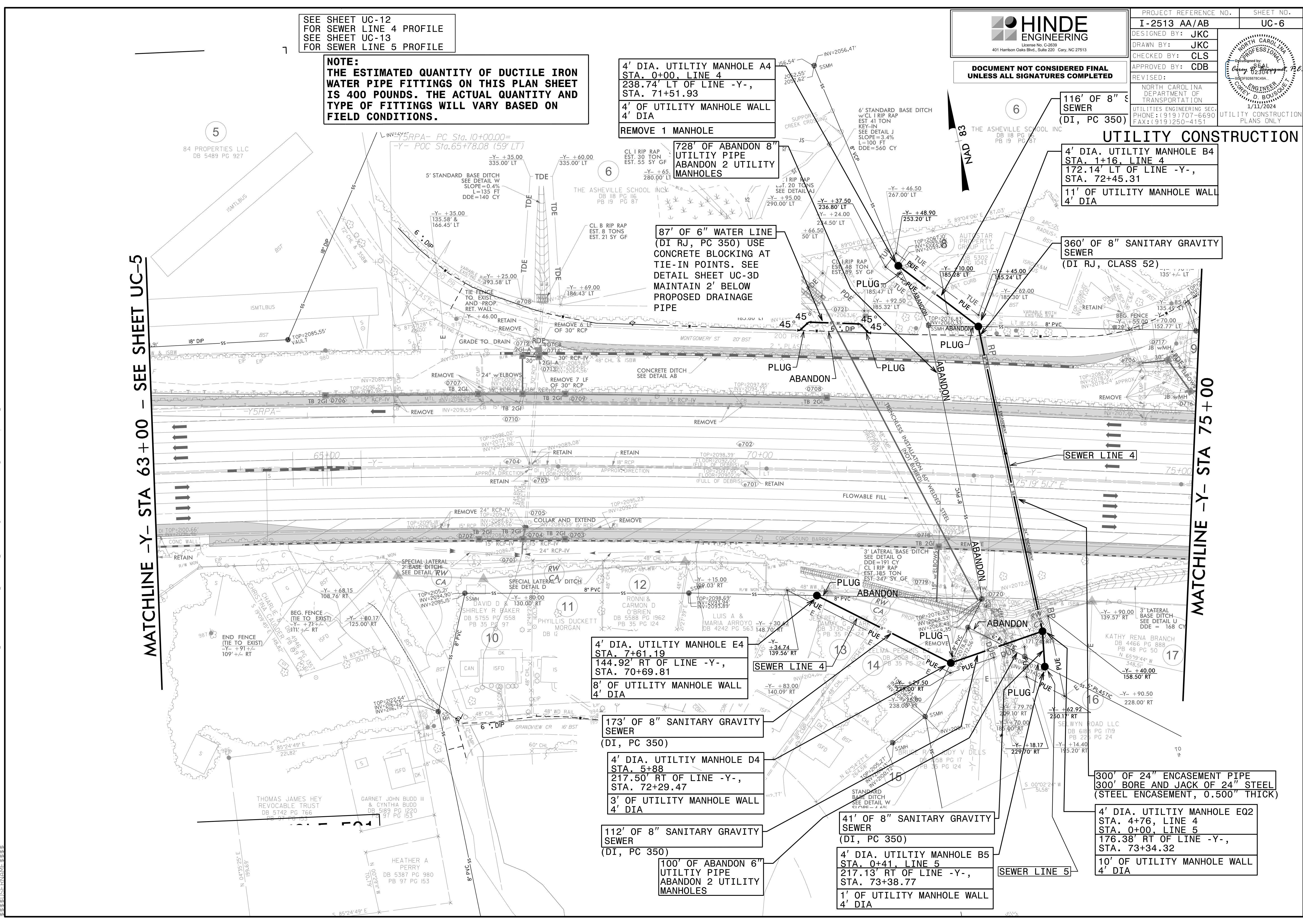
4' DIA. UTILITY MANHOLE B4  
STA. 1+16, LINE 4  
172.14' LT OF LINE -Y-,  
STA. 72+45.31  
11' OF UTILITY MANHOLE WALL  
4' DIA

360' OF 8" SANITARY GRAVITY SEWER (DI RJ, CLASS 52)

MATCHLINE -Y- STA 63+00 - SEE SHEET UC-5

MATCHLINE -Y- STA 75+00

I:\AN-2024\1218\PROJECTS\2020\A2020\901.00.AE\COM.I-2513AA&AB\Design\Utilities\Engineering\UC-Proj\12513AA-ut-rdy7\_UC06.psh.dgn



4' DIA. UTILITY MANHOLE E4  
STA. 7+61.19  
144.92' RT OF LINE -Y-,  
STA. 70+69.81  
8' OF UTILITY MANHOLE WALL  
4' DIA

173' OF 8" SANITARY GRAVITY SEWER (DI, PC 350)

4' DIA. UTILITY MANHOLE D4  
STA. 5+88  
217.50' RT OF LINE -Y-,  
STA. 72+29.47  
3' OF UTILITY MANHOLE WALL  
4' DIA

112' OF 8" SANITARY GRAVITY SEWER (DI, PC 350)

100' OF ABANDON 6" UTILITY PIPE  
ABANDON 2 UTILITY MANHOLES

41' OF 8" SANITARY GRAVITY SEWER (DI, PC 350)

4' DIA. UTILITY MANHOLE B5  
STA. 0+41, LINE 5  
217.13' RT OF LINE -Y-,  
STA. 73+38.77  
1' OF UTILITY MANHOLE WALL  
4' DIA

300' OF 24" ENCASUREMENT PIPE  
300' BORE AND JACK OF 24" STEEL (STEEL ENCASUREMENT, 0.500" THICK)

4' DIA. UTILITY MANHOLE EQ2  
STA. 4+76, LINE 4  
STA. 0+00, LINE 5  
176.38' RT OF LINE -Y-,  
STA. 73+34.32  
10' OF UTILITY MANHOLE WALL  
4' DIA