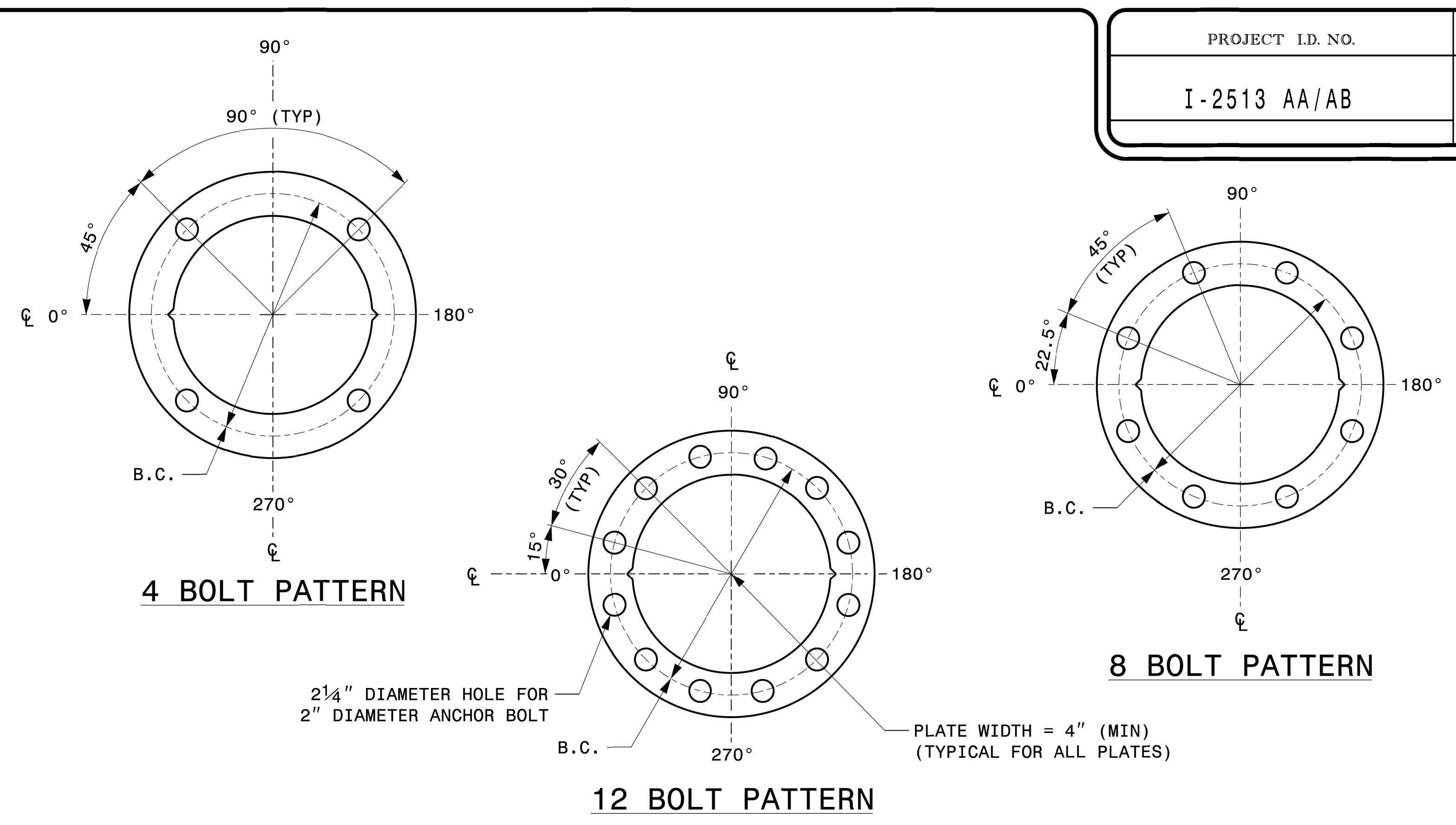
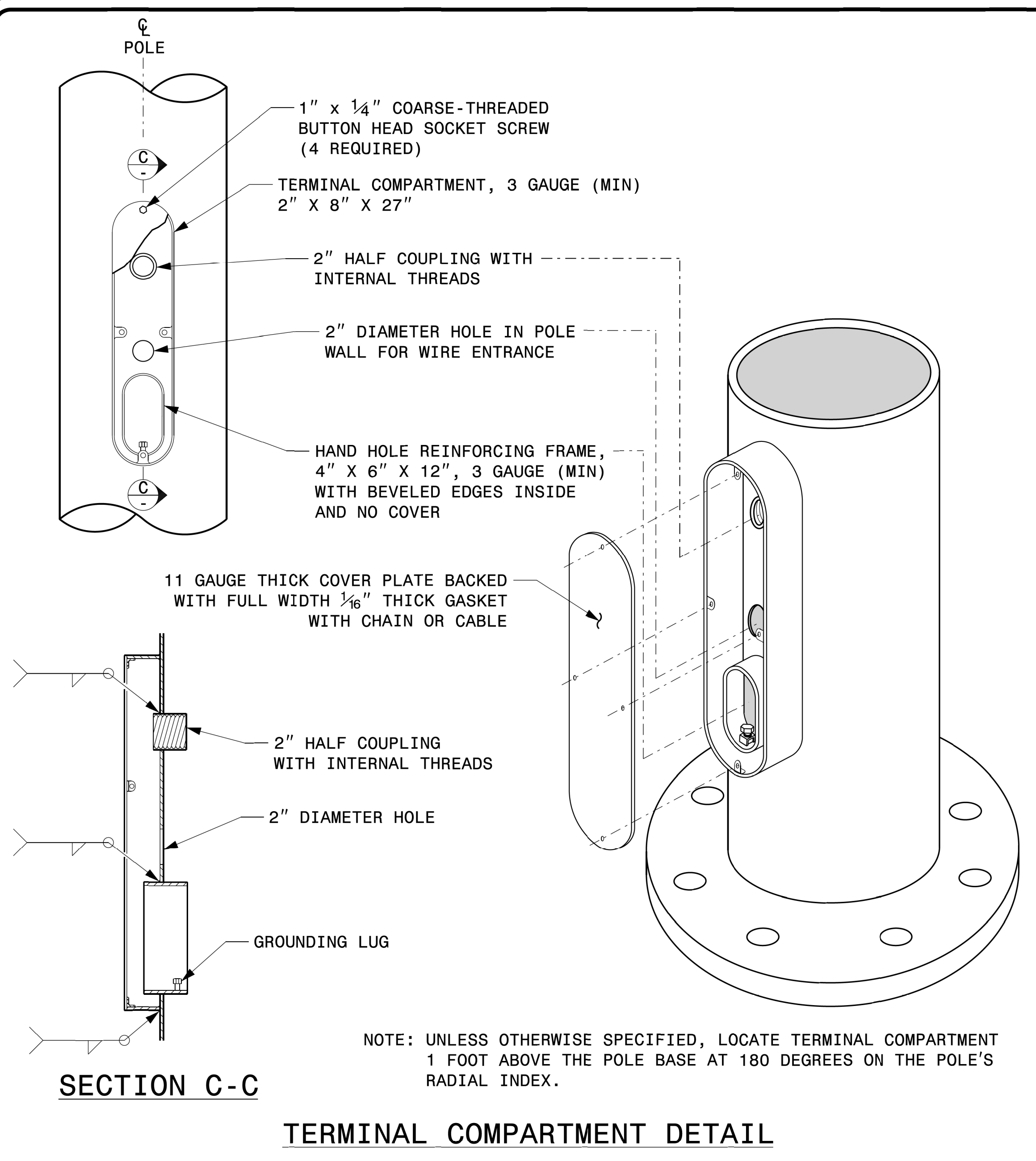


PROJECT I.D. NO.	SHEET NO.
I-2513 AA/AB	Sig.M2

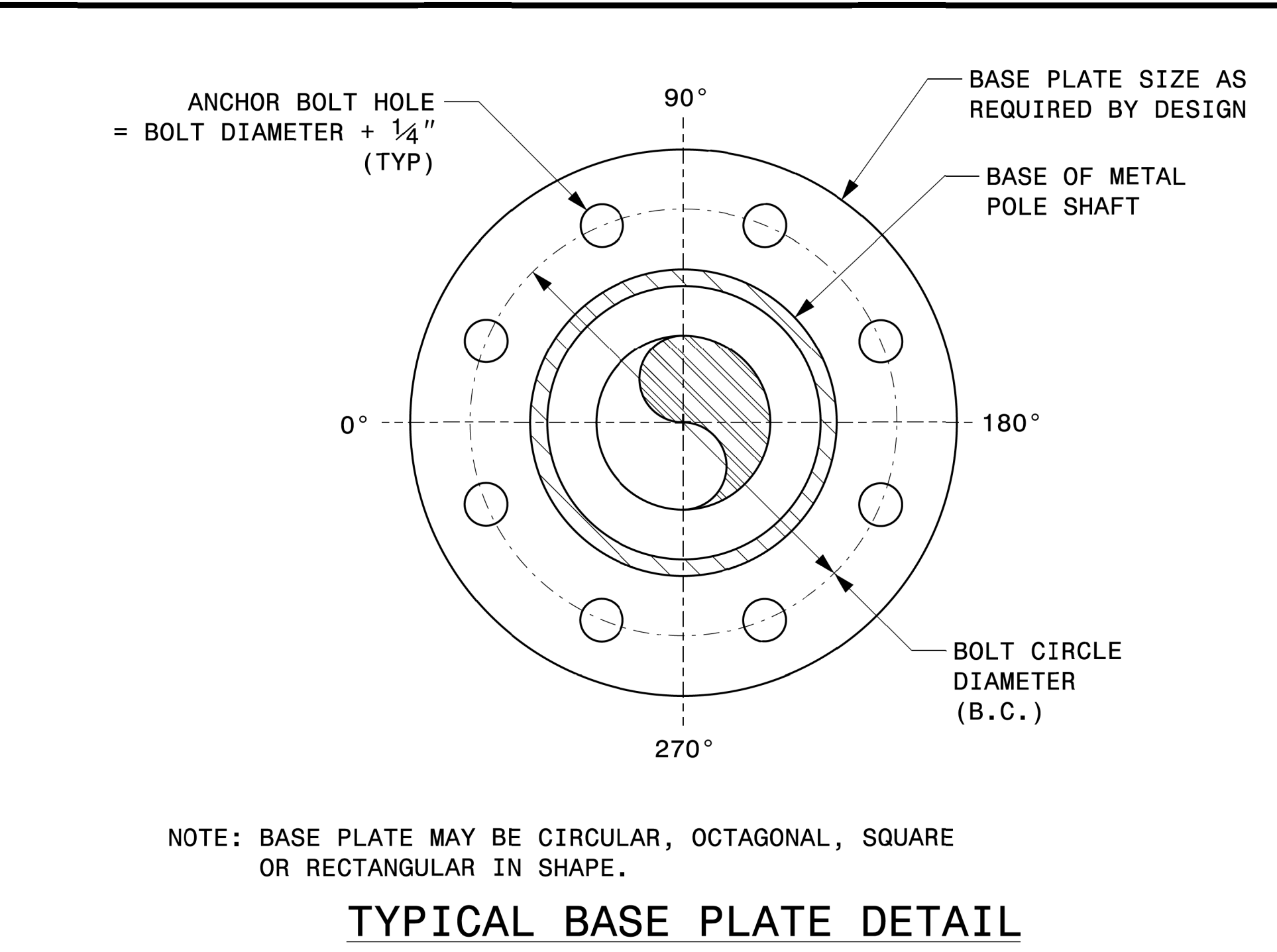
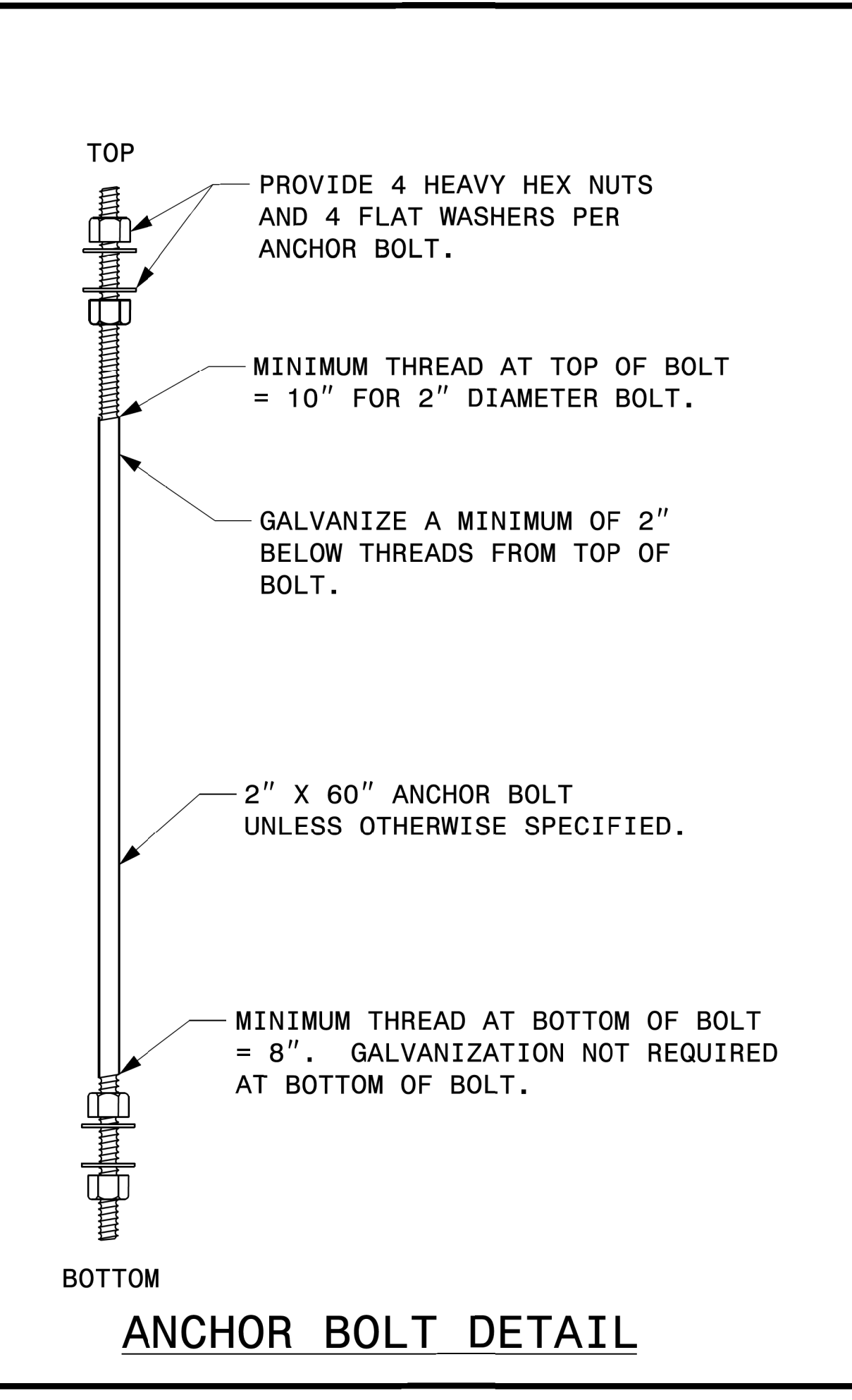


MFG _____ MFG. DATE: MM/YY	MFG _____ MFG. DATE: MM/YY
SHAFT D/T/L/Y	SECTION D/T/L/Y
ARM-A D/T/L/Y	NCDOT SIG. INV. NO.
ARM-B D/T/L/Y	NCDOT POLE NO.
A.B. DIA./B.C./L/Y	ARM I.D. TAG
NCDOT SIG. INV. NO.	(PROVIDE ON EACH SECTION OF A MULTI-SECTION MAST ARM)
NCDOT POLE NO.	
SHAFT I.D. TAG	
(PROVIDE ON SHAFT OF STRAIN POLES AND MAST ARM POLE SHAFT)	

NOTES:

- D = DIAMETER, T = THICKNESS, L = LENGTH, Y = YIELD STRENGTH
- A.B. = ANCHOR BOLT
- B.C. = BOLT CIRCLE OF ANCHOR BOLTS
- IF STANDARD DESIGN, INCLUDE CASE NUMBER IN ADDITION TO POLE NUMBER ON "NCDOT POLE NO." LINE.
- SIGNAL INV. NUMBER AND POLE I.D. NUMBER. SEE DRAWING M3 AND M4 FOR MOUNTING POSITIONS OF I.D. TAGS.

IDENTIFICATION TAG DETAILS



Prepared in the Offices of:

750 N. Grandfield Pkwy, Garner, NC 27529

PLAN DATE: SEPTEMBER 2023 DESIGNED BY: C.F. ANDREWS

PREPARED BY: K.C. DURIGON REVIEWED BY: D.C. SARKAR

REVISIONS	INIT.	DATE

DocuSigned by: **Kevin Durigon** 4823DC7983784DA

09/21/2023 DATE

Fabrication Details – All Metal Poles

08-0CT-2021 12:24 S:\TSS\SM\TSS\Sig\Drawings For LRF\2024 Sig.M2 Std. Fabrication Details-All Poles.dgn kcdur:ipm