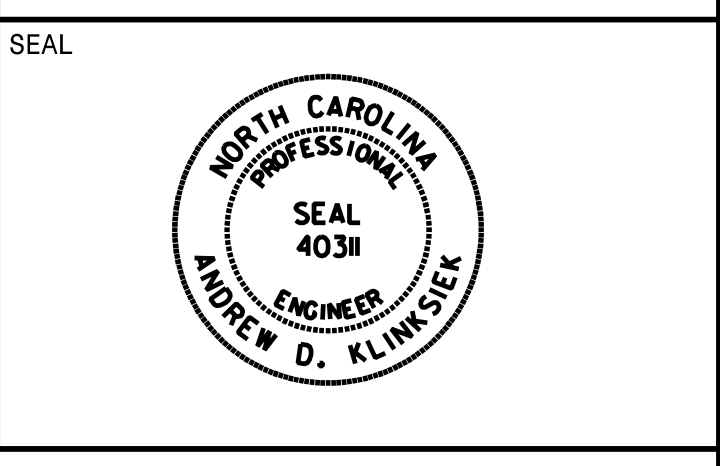


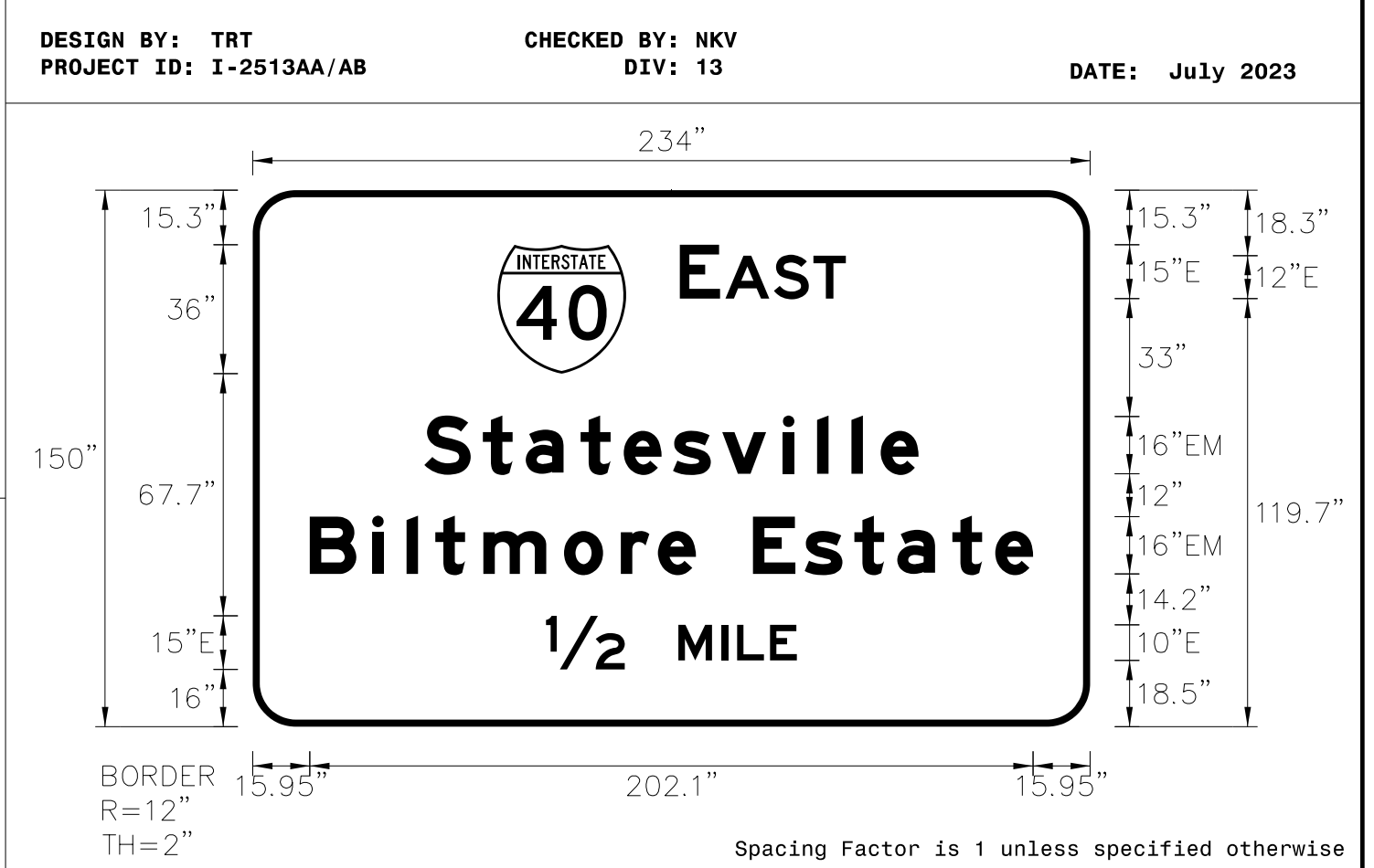
APPROVED: *Andrew Klinski*  
 DATE: 2/1/2024



DOCUMENT NOT CONSIDERED FINAL UNLESS ALL SIGNATURES COMPLETED

SIGN NUMBER: 26B  
 TYPE: A (OVHD)  
 QUANTITY: 1  
 SIGN WIDTH: 19'-6"  
 HEIGHT: 12'-6"  
 TOTAL AREA: 243.8 Sq.Ft.  
 BORDER TYPE: FLUSH  
 RECESS: 0"  
 WIDTH: 2"  
 RADII: 12"  
 NO. Z BARS: 4  
 LENGTH: 226.0

SYMBOL	X	Y	WID	HT
M1_1	68.3	98.7	36	36



- NOTES:
- Legend and border shall be direct applied Grade A reflective sheeting.
  - Shield shall be Grade A reflective sheeting on 0.032" aluminum and demountable.
  - Background shall be Grade C reflective sheeting.

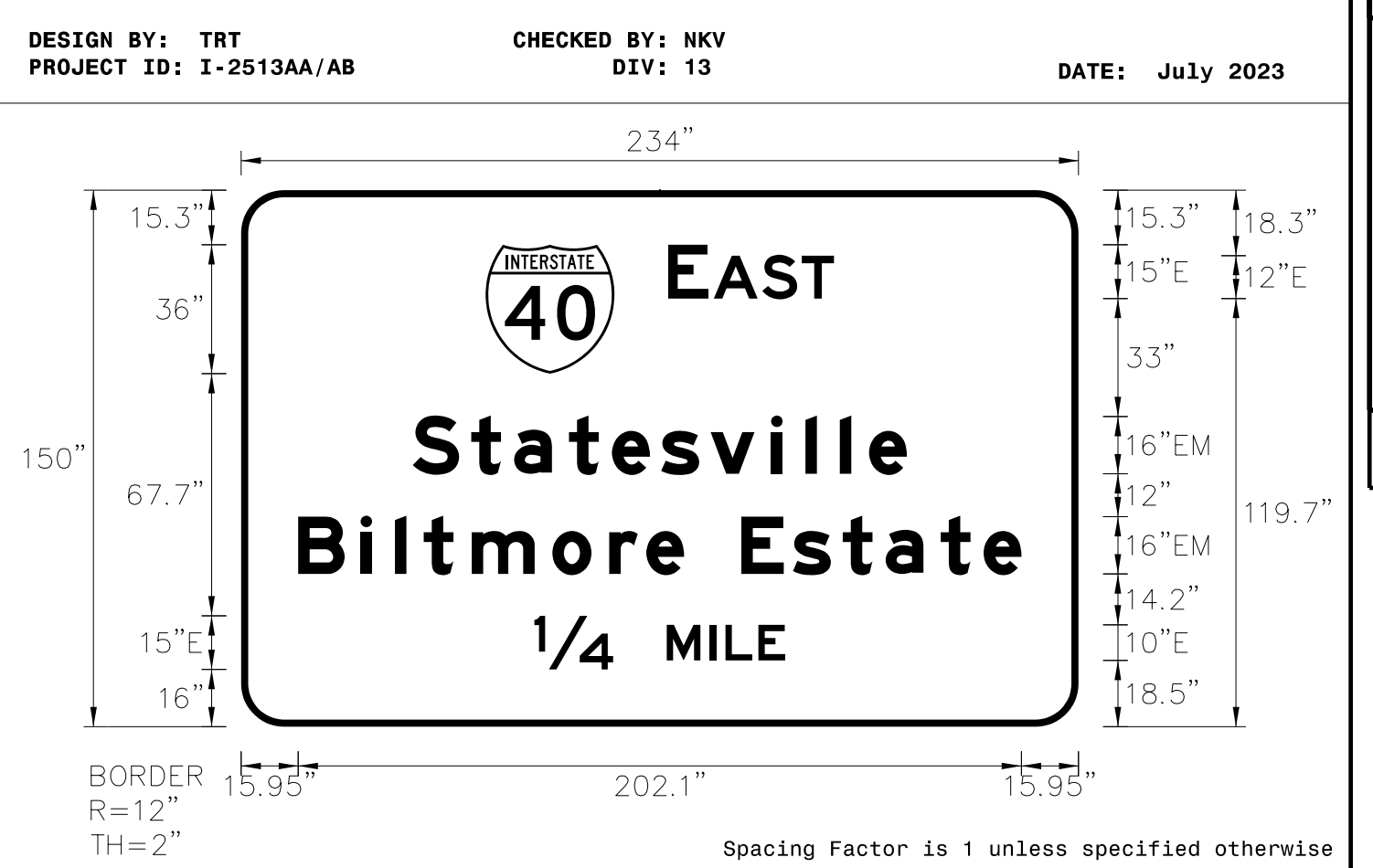
LETTER POSITIONS

Letter spacings are to start of next letter

Series/Size	Text Length
E	2000
48	138.1
16	202.1
82	70.1

SIGN NUMBER: 28B  
 TYPE: A (OVHD)  
 QUANTITY: 1  
 SIGN WIDTH: 19'-6"  
 HEIGHT: 12'-6"  
 TOTAL AREA: 243.8 Sq.Ft.  
 BORDER TYPE: FLUSH  
 RECESS: 0"  
 WIDTH: 2"  
 RADII: 12"  
 NO. Z BARS: 4  
 LENGTH: 226.0

SYMBOL	X	Y	WID	HT
M1_1	68.3	98.7	36	36



- NOTES:
- Legend and border shall be direct applied Grade A reflective sheeting.
  - Shield shall be Grade A reflective sheeting on 0.032" aluminum and demountable.
  - Background shall be Grade C reflective sheeting.

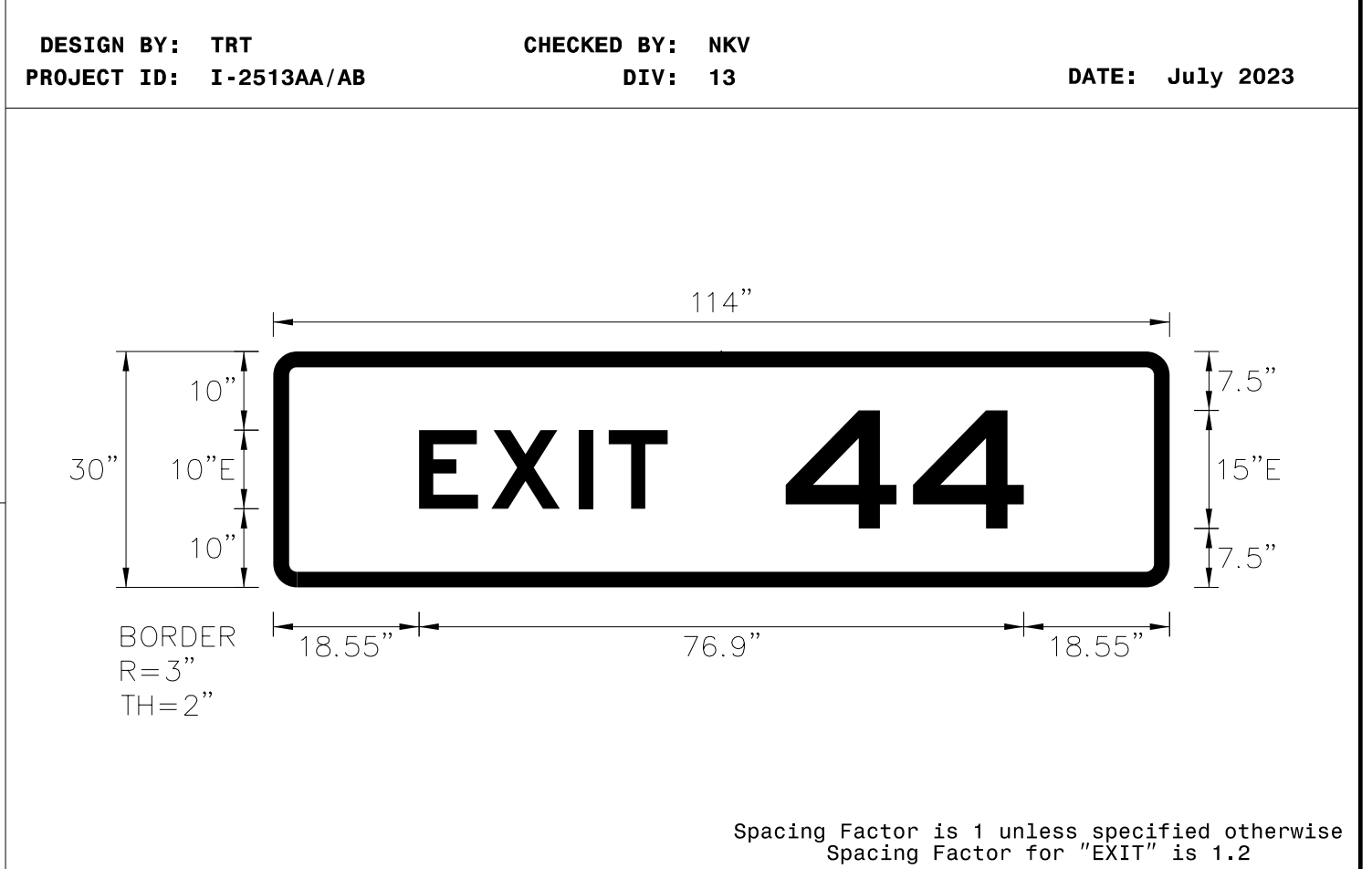
LETTER POSITIONS

Letter spacings are to start of next letter

Series/Size	Text Length
E	2000
48	138.1
16	202.1
82	70.1

SIGN NUMBER: 101A,102A  
 TYPE: B  
 QUANTITY: 2  
 SIGN WIDTH: 9'-6"  
 HEIGHT: 2'-6"  
 TOTAL AREA: 23.8 Sq.Ft.  
 BORDER TYPE: FLUSH  
 RECESS: 0"  
 WIDTH: 2"  
 RADII: 3"  
 NO. Z BARS: 2  
 LENGTH: 106.0

SYMBOL	X	Y	WID	HT
M1_4	81	72.3	36	36
M1_4	153	72.3	36	36



- NOTES:
- Legend and border shall be direct applied Grade C reflective sheeting.
  - Background shall be Grade C reflective sheeting.
  - Use Attachment Method 1-R.

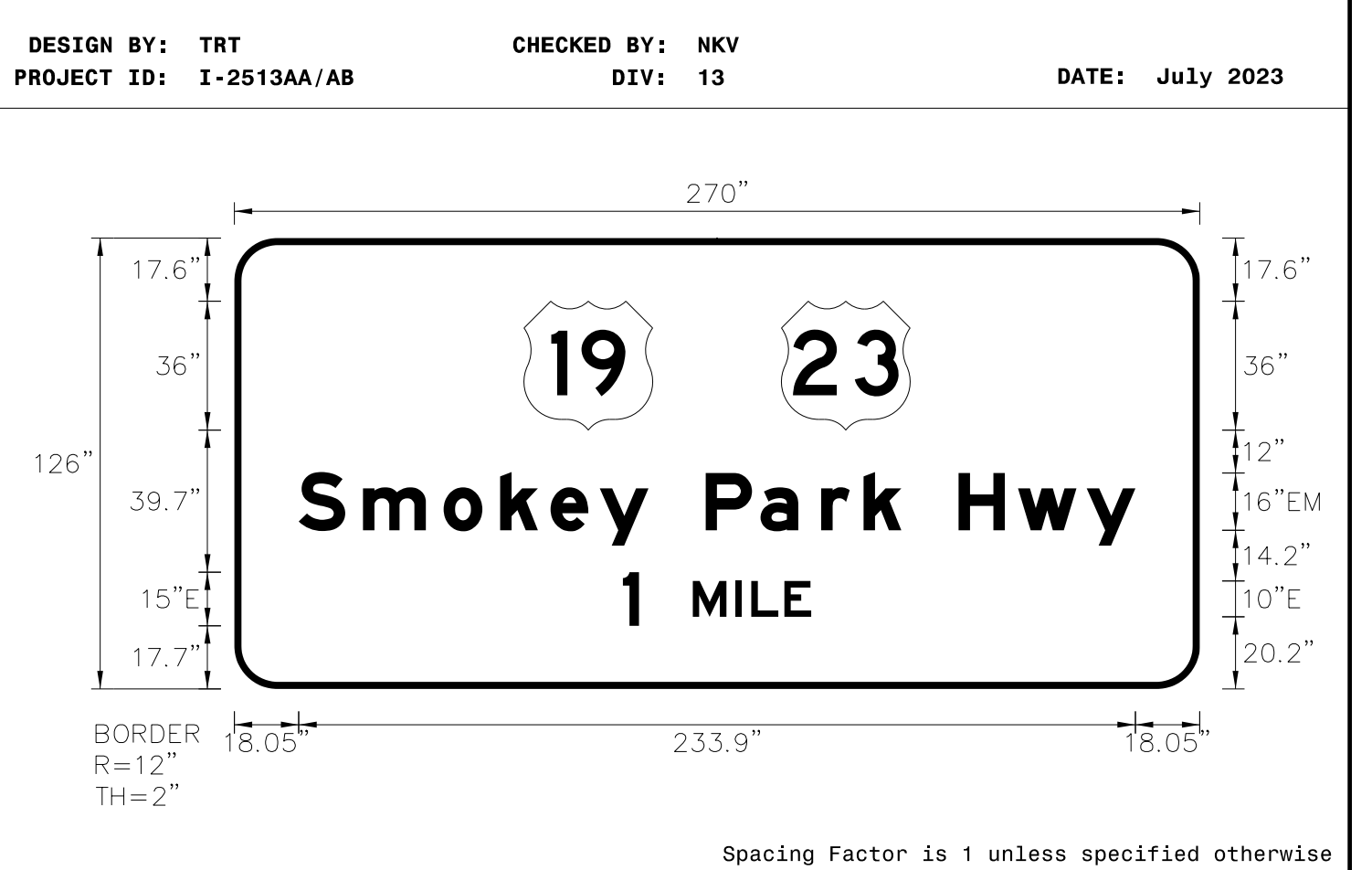
LETTER POSITIONS

Letter spacings are to start of next letter

Series/Size	Text Length
E	2000
4	31.6
65.2	30.3

SIGN NUMBER: 101B  
 TYPE: A  
 QUANTITY: 1  
 SIGN WIDTH: 22'-6"  
 HEIGHT: 10'-6"  
 TOTAL AREA: 236.3 Sq.Ft.  
 BORDER TYPE: FLUSH  
 RECESS: 0"  
 WIDTH: 2"  
 RADII: 12"  
 NO. Z BARS: 3  
 LENGTH: 262.0

SYMBOL	X	Y	WID	HT
M1_4	81	72.3	36	36
M1_4	153	72.3	36	36



- NOTES:
- Legend and border shall be direct applied Grade C reflective sheeting.
  - Shields shall be Grade C reflective sheeting on 0.032" aluminum and demountable.
  - Background shall be Grade C reflective sheeting.

LETTER POSITIONS

Letter spacings are to start of next letter

Series/Size	Text Length
EM	2000
1	233.9
108.7	52.6