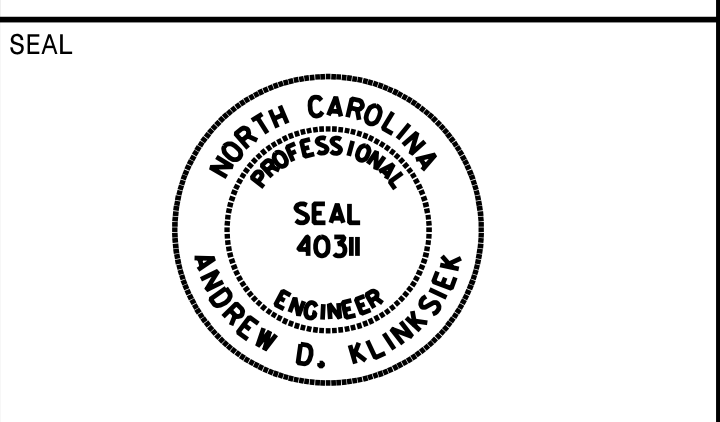


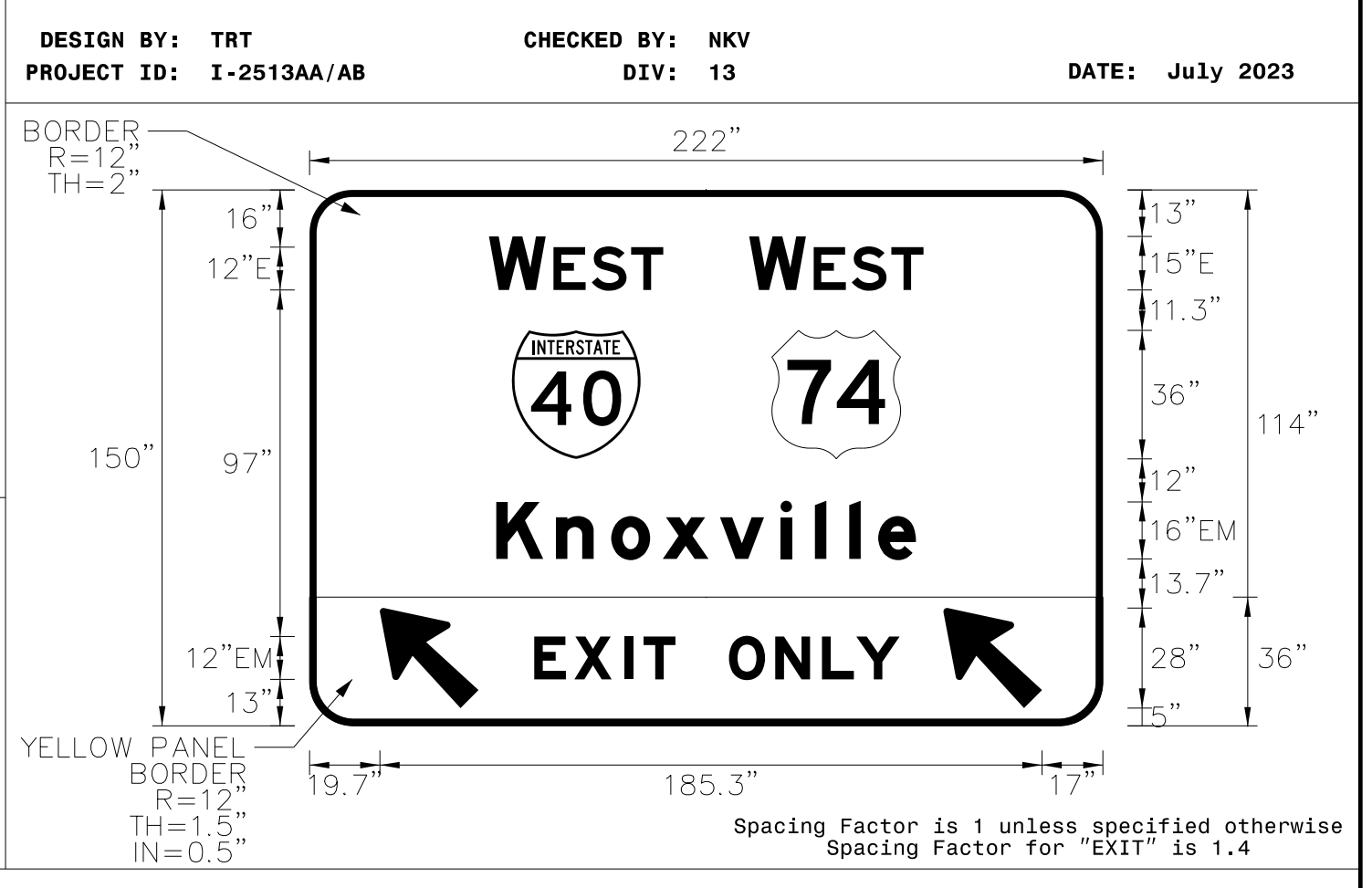
APPROVED: *Andrew Klimek*
 DATE: 2/1/2024



DOCUMENT NOT CONSIDERED FINAL
 UNLESS ALL SIGNATURES COMPLETED

SIGN NUMBER: 22B
 TYPE: A (OVHD)
 QUANTITY: 1
 SIGN WIDTH: 18'-6"
 HEIGHT: 12'-6"
 TOTAL AREA: 231.3 Sq.Ft.
 BORDER TYPE: VAR.
 RECESS: VAR.
 WIDTH: VAR.
 RADII: VAR.
 NO. Z BARS: 4
 LENGTH: 214.0

SYMBOL	X	Y	WID	HT
M1_1	56.6	74.7	36	36
M1_4	129.4	74.7	36	36
Type A Arrow	19.7	5	22.3	35
Type A Arrow	177.4	5	22.3	35



NOTES:
 1. Legend and border shall be direct applied Grade A reflective sheeting.
 2. Shields shall be Grade A reflective sheeting on 0.032" aluminum and demountable.
 3. Background shall be Grade C reflective sheeting.
 4. Bottom panel shall be yellow Grade C sheeting. Legend shall be direct applied black non-reflective sheeting. Arrow(s) shall be black non-reflective sheeting on 0.032" aluminum and demountable. Yellow panel is 222" X 36". (Border Type = Recessed, Recess = 0.5", Width = 1.5", Radii = 12")

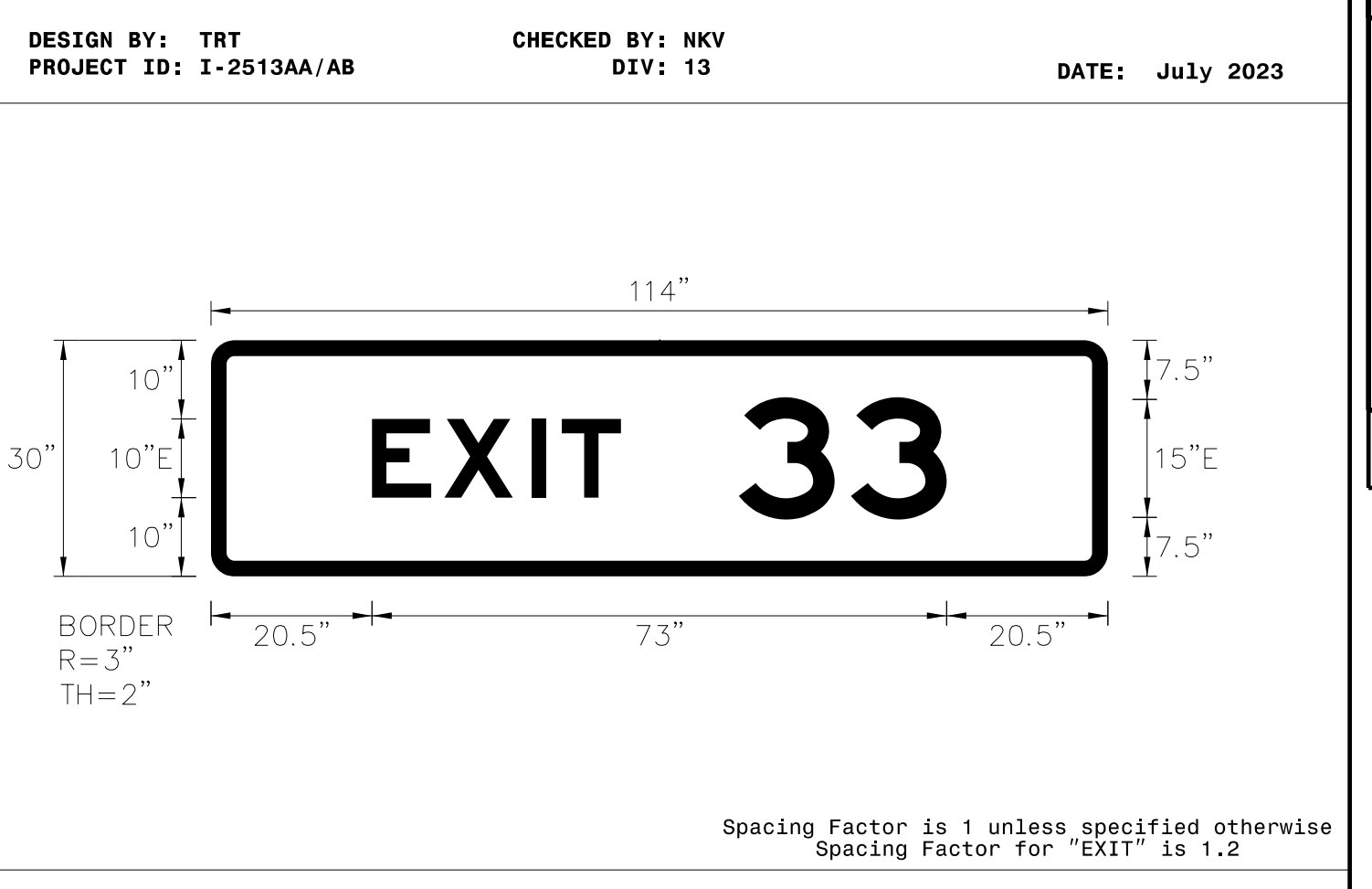
LETTER POSITIONS

Letter spacings are to start of next letter

Letter	W	E	S	T	Series/Size
E	50.2	15.9	2.2	10.7	E 2000
W	123	15.9	2.2	10.7	E 2000
K	52.3	16.6	15.5	14.4	EM 2000
E	62.9	11.2	14	5.4	EM 2000
O	117.4	13	13.1	9.6	EM 2000

SIGN NUMBER: 24A
 TYPE: B (OVHD)
 QUANTITY: 1
 SIGN WIDTH: 9'-6"
 HEIGHT: 2'-6"
 TOTAL AREA: 23.8 Sq.Ft.
 BORDER TYPE: FLUSH
 RECESS: 0"
 WIDTH: 2"
 RADII: 3"
 NO. Z BARS: 2
 LENGTH: 106.0

SYMBOL	X	Y	WID	HT
M1_1	56.6	74.7	36	36
M1_4	129.4	74.7	36	36
Type A Arrow	19.7	5	22.3	35
Type A Arrow	177.4	5	22.3	35



NOTES:
 1. Legend and border shall be direct applied Grade A reflective sheeting.
 2. Background shall be Grade C reflective sheeting.
 3. Use Attachment Method 1-R.

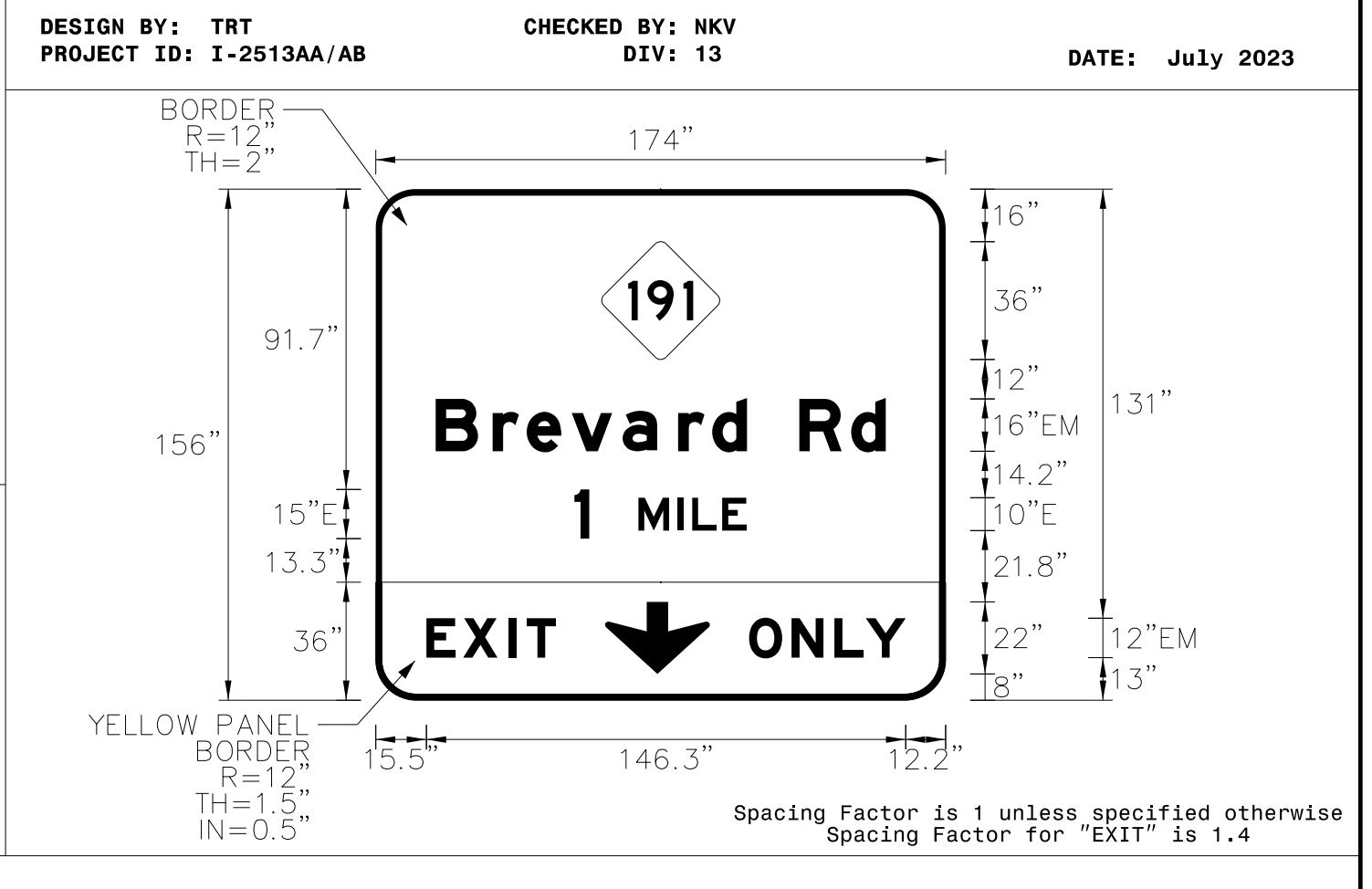
LETTER POSITIONS

Letter spacings are to start of next letter

Letter	E	X	I	T	Series/Size
E	20.5	9.2	11.1	3.8	E 2000
X	67.1	14.2	12.2	20.5	E 2000
I		3	3		E 2000
T				20.5	E 2000

SIGN NUMBER: 24B
 TYPE: A (OVHD)
 QUANTITY: 1
 SIGN WIDTH: 14'-6"
 HEIGHT: 13'-0"
 TOTAL AREA: 188.5 Sq.Ft.
 BORDER TYPE: VAR.
 RECESS: VAR.
 WIDTH: VAR.
 RADII: VAR.
 NO. Z BARS: 4
 LENGTH: 166.0

SYMBOL	X	Y	WID	HT
M1-5-3-24-80	69	104	36	36
Type C Arrow	70	8	32	22



NOTES:
 1. Legend and border shall be direct applied Grade A reflective sheeting.
 2. Shield shall be Grade A reflective sheeting on 0.032" aluminum and demountable.
 3. Background shall be Grade C reflective sheeting.
 4. Bottom panel shall be yellow Grade C sheeting. Legend shall be direct applied black non-reflective sheeting. Arrow shall be black non-reflective sheeting on 0.032" aluminum and demountable. Yellow panel is 174" X 36". (Border Type = Recessed, Recess = 0.5", Width = 1.5", Radii = 12")

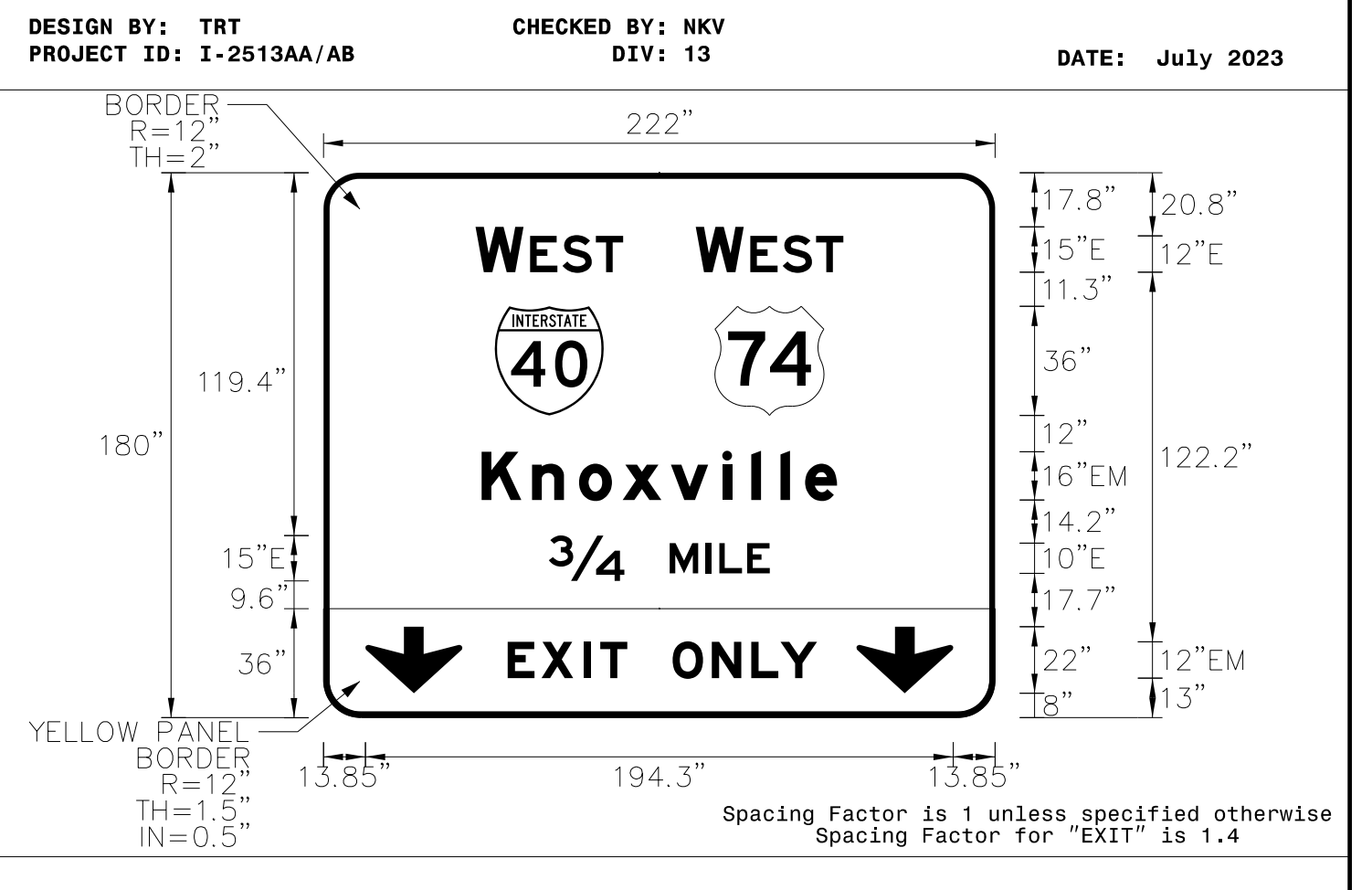
LETTER POSITIONS

Letter spacings are to start of next letter

Letter	B	r	e	v	a	r	d	R	d	Series/Size
B	18.3	17.4	10.4	13.8	15.5	17	10.4	10.6	16	EM 2000
r	60.7	4.5	15	12	4.4	9.2	7.5	60.7		E 2000
E	15.5	11.2	14	5.4	8.9	119				EM 2000
O	114	13	13.1	9.6	12.1	12.2				EM 2000

SIGN NUMBER: 25B
 TYPE: A (OVHD)
 QUANTITY: 1
 SIGN WIDTH: 18'-6"
 HEIGHT: 15'-0"
 TOTAL AREA: 277.5 Sq.Ft.
 BORDER TYPE: VAR.
 RECESS: VAR.
 WIDTH: VAR.
 RADII: VAR.
 NO. Z BARS: 6
 LENGTH: 214.0

SYMBOL	X	Y	WID	HT
M1_1	56.6	99.9	36	36
M1_4	129.4	99.9	36	36
Type C Arrow	13.9	8	32	22
Type C Arrow	176.1	8	32	22



NOTES:
 1. Legend and border shall be direct applied Grade A reflective sheeting.
 2. Shields shall be Grade A reflective sheeting on 0.032" aluminum and demountable.
 3. Background shall be Grade C reflective sheeting.
 4. Bottom panel shall be yellow Grade C sheeting. Legend shall be direct applied black non-reflective sheeting. Arrows shall be black non-reflective sheeting on 0.032" aluminum and demountable. Yellow panel is 222" X 36". (Border Type = Recessed, Recess = 0.5", Width = 1.5", Radii = 12")

LETTER POSITIONS

Letter spacings are to start of next letter

Letter	W	E	S	T	Series/Size
E	50.2	15.9	2.2	10.7	E 2000
W	123	15.9	2.2	10.7	E 2000
K	52.3	16.6	15.5	14.4	EM 2000
E	60.9	11.2	14	5.4	EM 2000
O	115.4	13	13.1	9.6	EM 2000