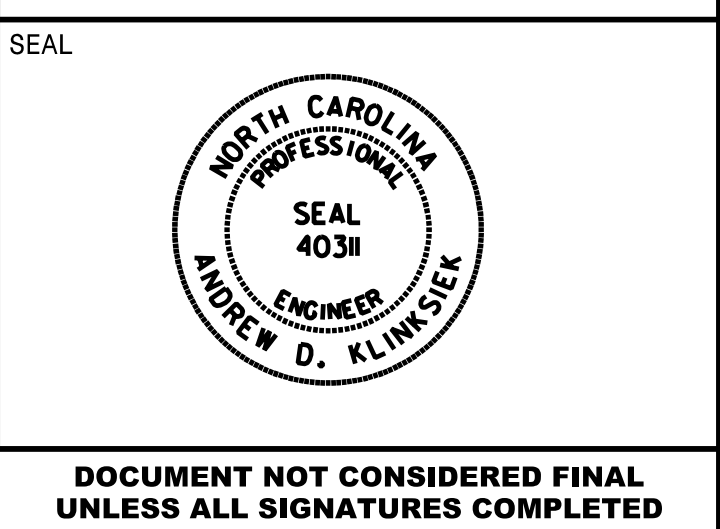


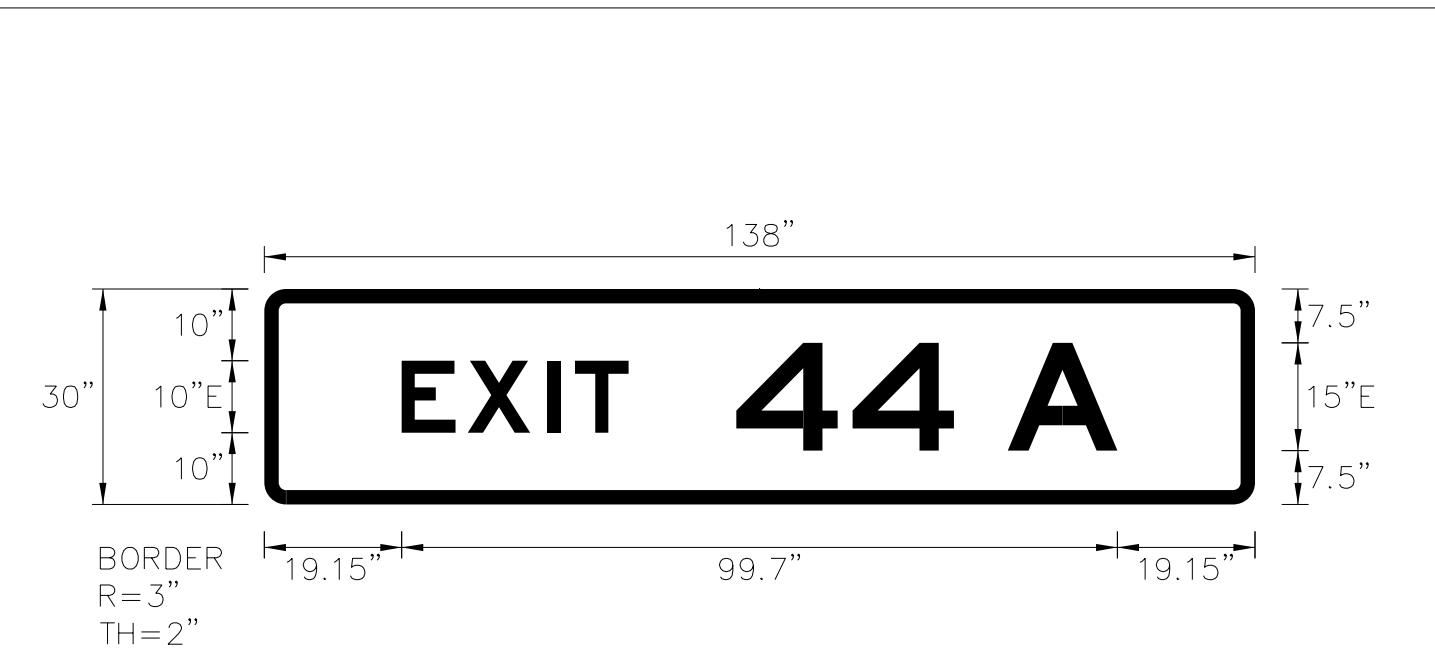
APPROVED: *Andrew Klimek*  
 DATE: 2/1/2024



DOCUMENT NOT CONSIDERED FINAL UNLESS ALL SIGNATURES COMPLETED

SIGN NUMBER: 6A,10A,11A,16A BACKG COLOR: Green  
 TYPE: B (OVHD) COPY COLOR: White  
 QUANTITY: 4  
 SIGN WIDTH: 11'-6" HEIGHT: 2'-6"  
 TOTAL AREA: 28.8 Sq.Ft.  
 BORDER TYPE: FLUSH RECESS: 0" WIDTH: 2" RADII: 3"  
 NO. Z BARS: 2 LENGTH: 130.0  
 MAT'L: 0.125" ALUMINUM

DESIGN BY: TRT CHECKED BY: NKV  
 PROJECT ID: I-2513AA/AB DIV: 13 DATE: July 2023



NOTES:  
 1. Legend and border shall be direct applied Grade A reflective sheeting.  
 2. Background shall be Grade C reflective sheeting.  
 3. Use Attachment Method 1-R.

Spacing Factor is 1 unless specified otherwise  
 Spacing Factor for "EXIT" is 1.2

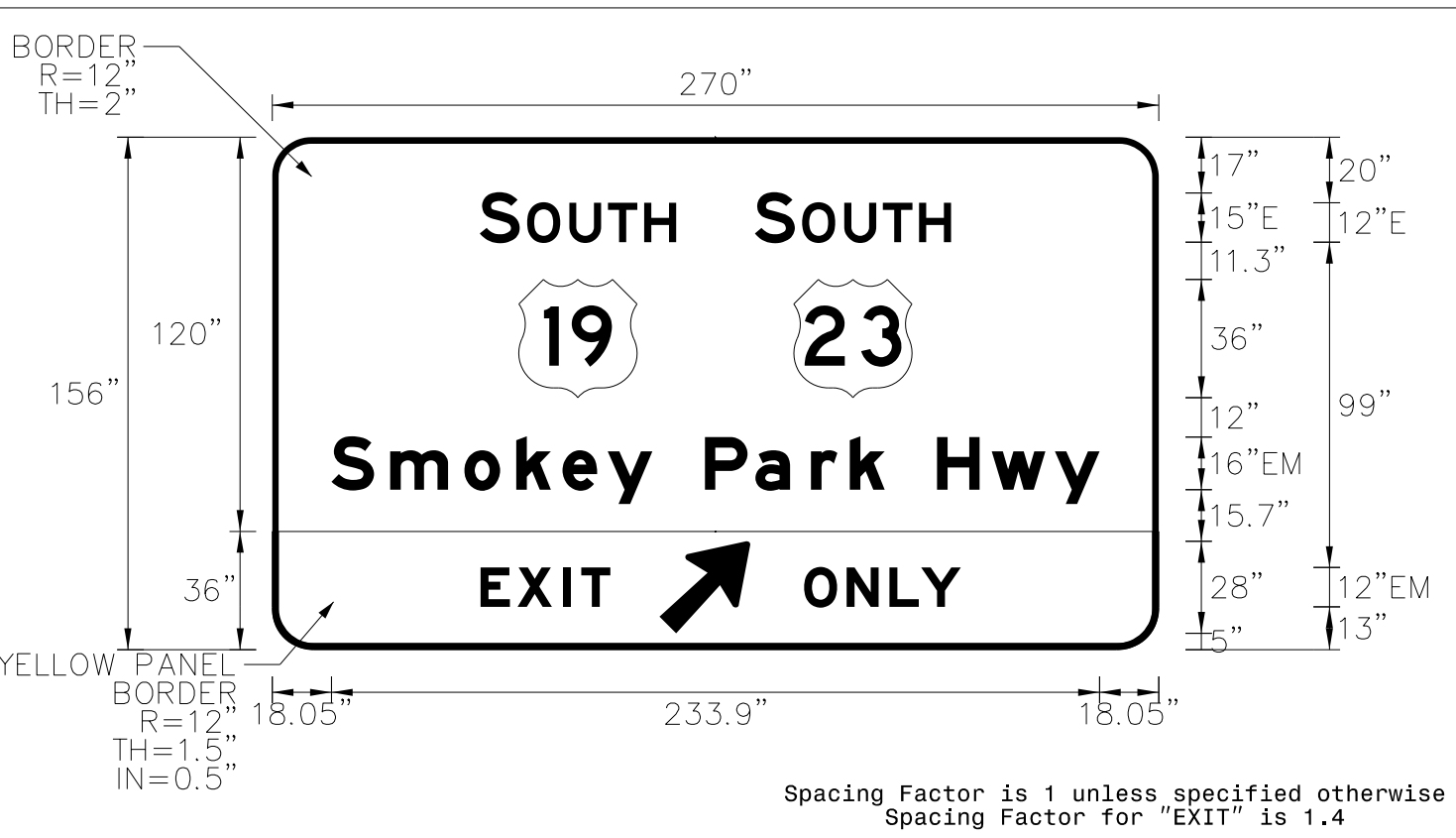
LETTER POSITIONS

Letter spacings are to start of next letter

	E	X	I	T	Series/Size		
	19.1	9.2	11.1	3.8	7.5	87.2	E 2000
		4	4		A		E 2000
	65.8	16.2	14.1	7.5	15.3	19.1	53.1

SIGN NUMBER: 6B BACKG COLOR: Green/Yellow  
 TYPE: A (OVHD) COPY COLOR: White/Black  
 QUANTITY: 1  
 SIGN WIDTH: 22'-6" HEIGHT: 13'-0"  
 TOTAL AREA: 292.5 Sq.Ft.  
 BORDER TYPE: VAR. RECESS: VAR. WIDTH: VAR. RADII: VAR.  
 NO. Z BARS: 4 LENGTH: 262.0  
 MAT'L: 0.125" ALUMINUM

DESIGN BY: TRT CHECKED BY: NKV  
 PROJECT ID: I-2513AA/AB DIV: 13 DATE: July 2023



NOTES:  
 1. Legend and border shall be direct applied Grade A reflective sheeting.  
 2. Shields shall be Grade A reflective sheeting on 0.032" aluminum and demountable.  
 3. Background shall be Grade C reflective sheeting.  
 4. Bottom panel shall be yellow Grade C sheeting. Legend shall be direct applied black non-reflective sheeting. Arrow shall be black non-reflective sheeting on 0.032" aluminum and demountable. Yellow panel is 270" X 36". (Border Type = Recessed, Recess = 0.5", Width = 1.5", Radii = 12")

Spacing Factor is 1 unless specified otherwise  
 Spacing Factor for "EXIT" is 1.4

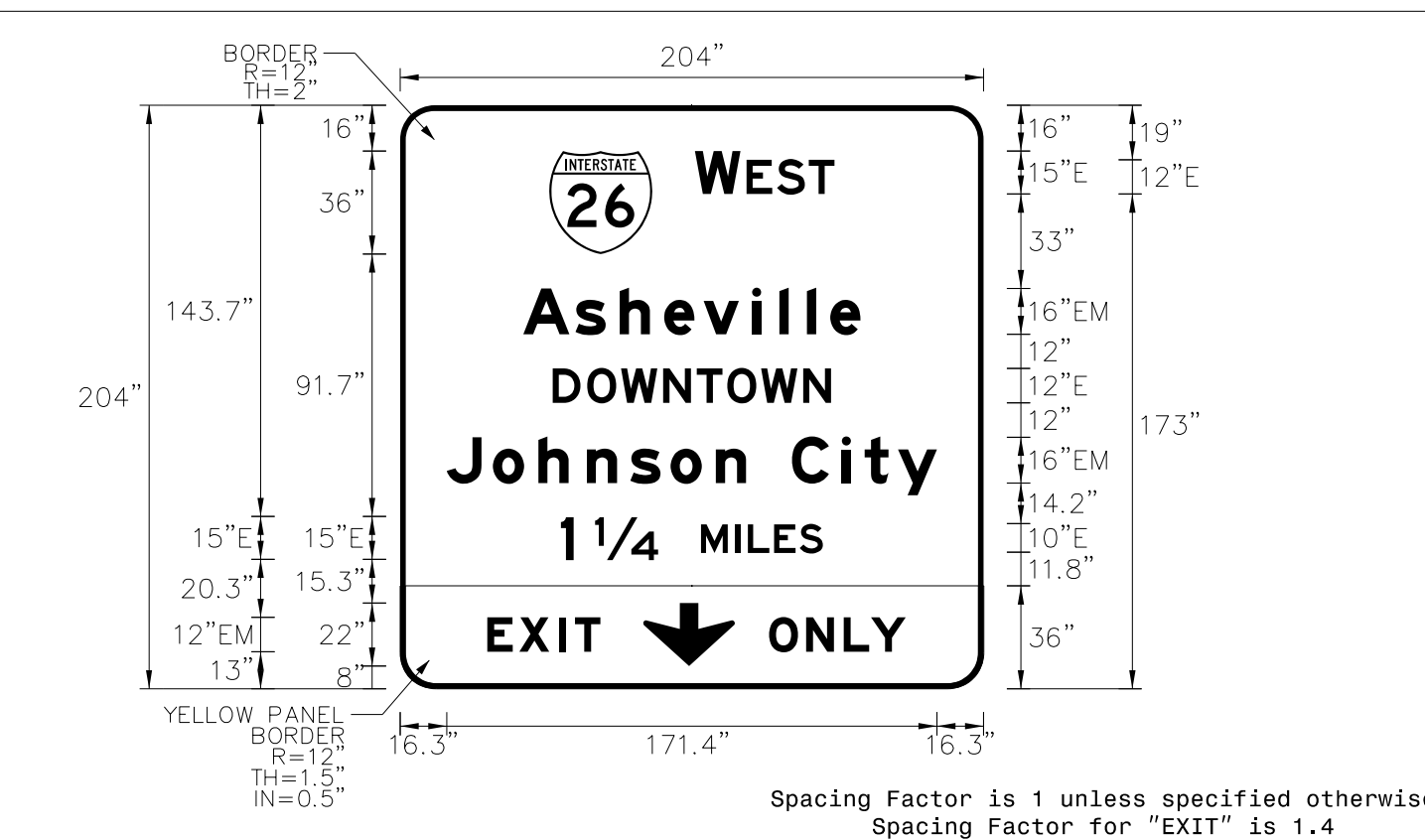
LETTER POSITIONS

Letter spacings are to start of next letter

	S	O	U	T	H	Series/Size												
	63.2	12.2	2.2	12.8	11.8	11	9.7	147	E 2000									
	147	12.2	2.2	12.8	11.8	11	9.7	63.2	E 2000									
	18	17.9	22.6	15.8	14.1	13.8	13.6	16	15.4	17	11.8	10.6	16	16.6	19.2	13.6	18	EM 2000
	63.5	11.2	14	5.4	8.9	167	EM 2000											
	162	13	13.1	9.6	12.1	60.2	EM 2000											

SIGN NUMBER: 7B BACKG COLOR: Green/Yellow  
 TYPE: A (OVHD) COPY COLOR: White/Black  
 QUANTITY: 1  
 SIGN WIDTH: 17'-0" HEIGHT: 17'-0"  
 TOTAL AREA: 289.0 Sq.Ft.  
 BORDER TYPE: VAR. RECESS: VAR. WIDTH: VAR. RADII: VAR.  
 NO. Z BARS: 6 LENGTH: 196.0  
 MAT'L: 0.125" ALUMINUM

DESIGN BY: TRT CHECKED BY: NKV  
 PROJECT ID: I-2513AA/AB DIV: 13 DATE: July 2023



NOTES:  
 1. Legend and border shall be direct applied Grade A reflective sheeting.  
 2. Shield shall be Grade A reflective sheeting on 0.032" aluminum and demountable.  
 3. Background shall be Grade C reflective sheeting.  
 4. Bottom panel shall be yellow Grade C sheeting. Legend shall be direct applied black non-reflective sheeting. Arrow shall be black non-reflective sheeting on 0.032" aluminum and demountable. Yellow panel is 204" X 36". (Border Type = Recessed, Recess = 0.5", Width = 1.5", Radii = 12")

Spacing Factor is 1 unless specified otherwise  
 Spacing Factor for "EXIT" is 1.4

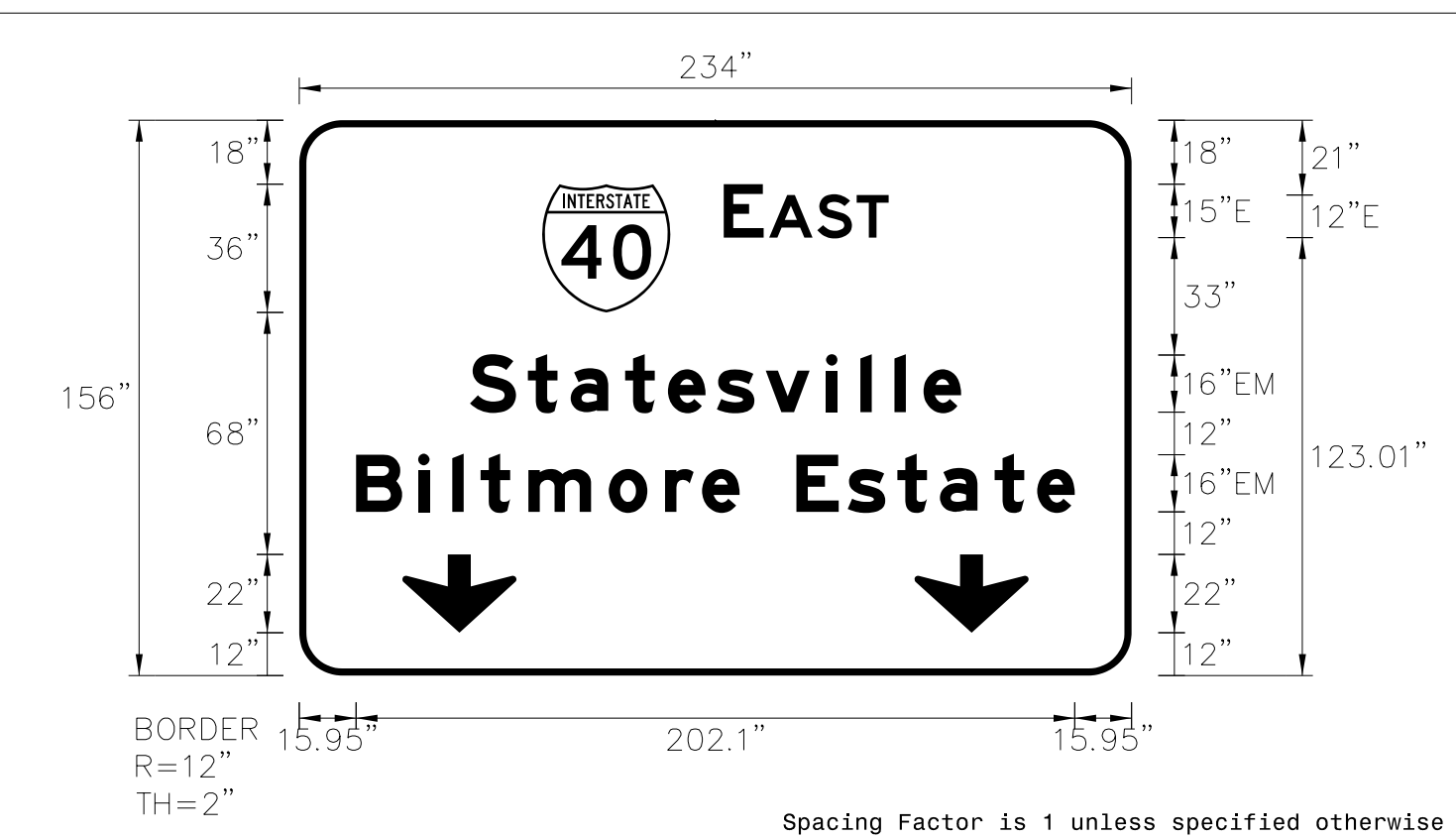
LETTER POSITIONS

Letter spacings are to start of next letter

	W	E	S	T	Series/Size										
	103	15.9	2.2	10.7	11	9	52.2	E 2000							
	43	18.2	15.5	15.5	13.8	17	9.6	9.6	8.2	10.6	43	EM 2000			
	53.3	12.1	11.8	14.8	11.8	10.7	11.8	14.8	9.7	53.3	E 2000				
	16.3	16.2	15.8	17	15.2	14.1	15.8	10.6	16	7.4	8	11.7	13.6	16.3	EM 2000
	56.2	4.5	7.5	22	15	12	4.4	9.2	8.9	8.1	56.2	E 2000			
	30.5	10.6	13	4.6	8.9	134	EM 2000								
	129	13	13.1	9.6	12.1	27.2	EM 2000								

SIGN NUMBER: 8,13 BACKG COLOR: Green  
 TYPE: A (OVHD) COPY COLOR: White  
 QUANTITY: 2  
 SIGN WIDTH: 19'-6" HEIGHT: 13'-0"  
 TOTAL AREA: 253.5 Sq.Ft.  
 BORDER TYPE: FLUSH RECESS: 0" WIDTH: 2" RADII: 12"  
 NO. Z BARS: 4 LENGTH: 226.0  
 MAT'L: 0.125" ALUMINUM

DESIGN BY: TRT CHECKED BY: NKV  
 PROJECT ID: I-2513AA/AB DIV: 13 DATE: July 2023



NOTES:  
 1. Legend and border shall be direct applied Grade A reflective sheeting.  
 2. Arrows and shield shall be Grade A reflective sheeting on 0.032" aluminum and demountable.  
 3. Background shall be Grade C reflective sheeting.

Spacing Factor is 1 unless specified otherwise

LETTER POSITIONS

Letter spacings are to start of next letter

	E	A	S	T	Series/Size													
	119.3	11.3	1.5	13.6	11	9	68.3	E 2000										
	48	16.3	12	15.4	12	13.8	13.8	17	9.6	9.6	8.2	10.6	48	EM 2000				
	16	17.4	9.6	8	13.4	22.6	15.8	10.4	10.6	16	14.4	13.9	12	15.4	12	10.6	16	EM 2000