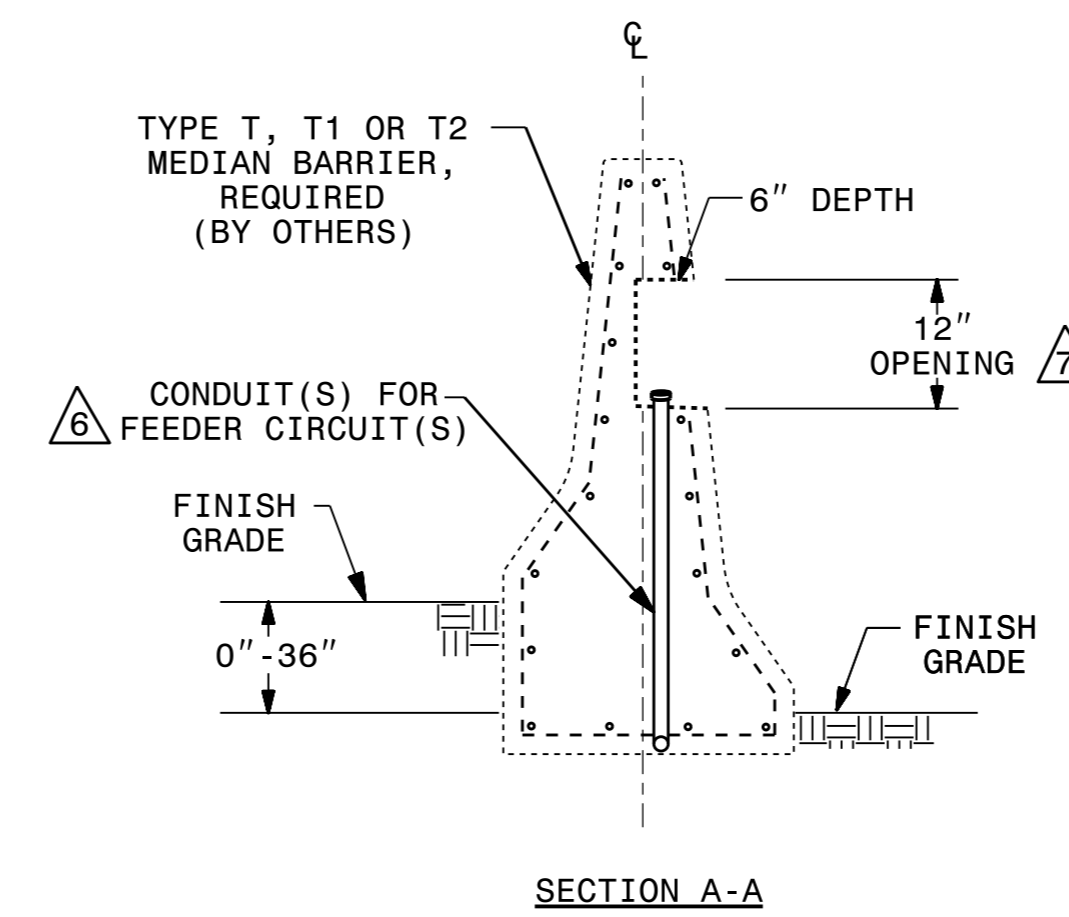
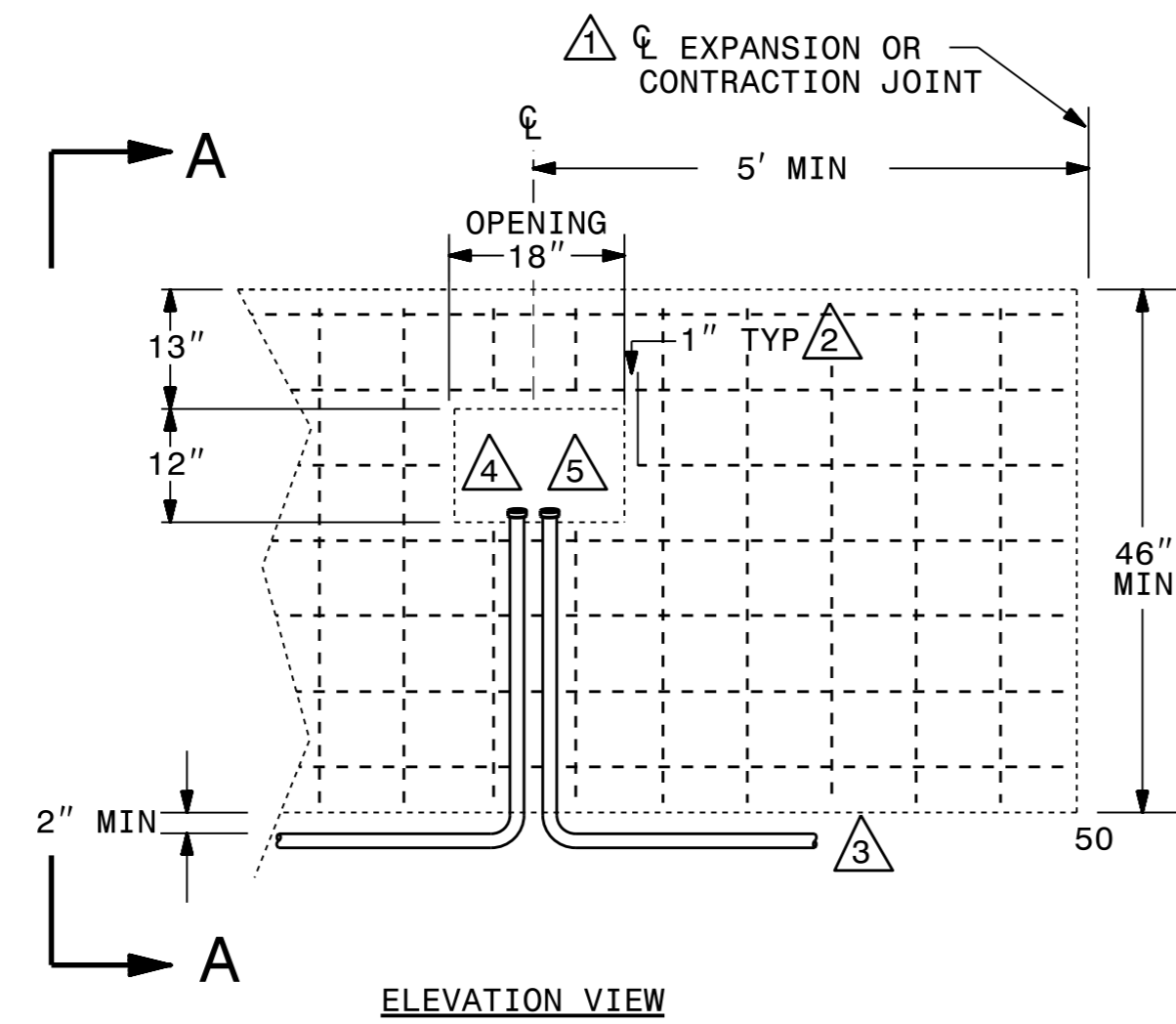


NTS

01/04/2024

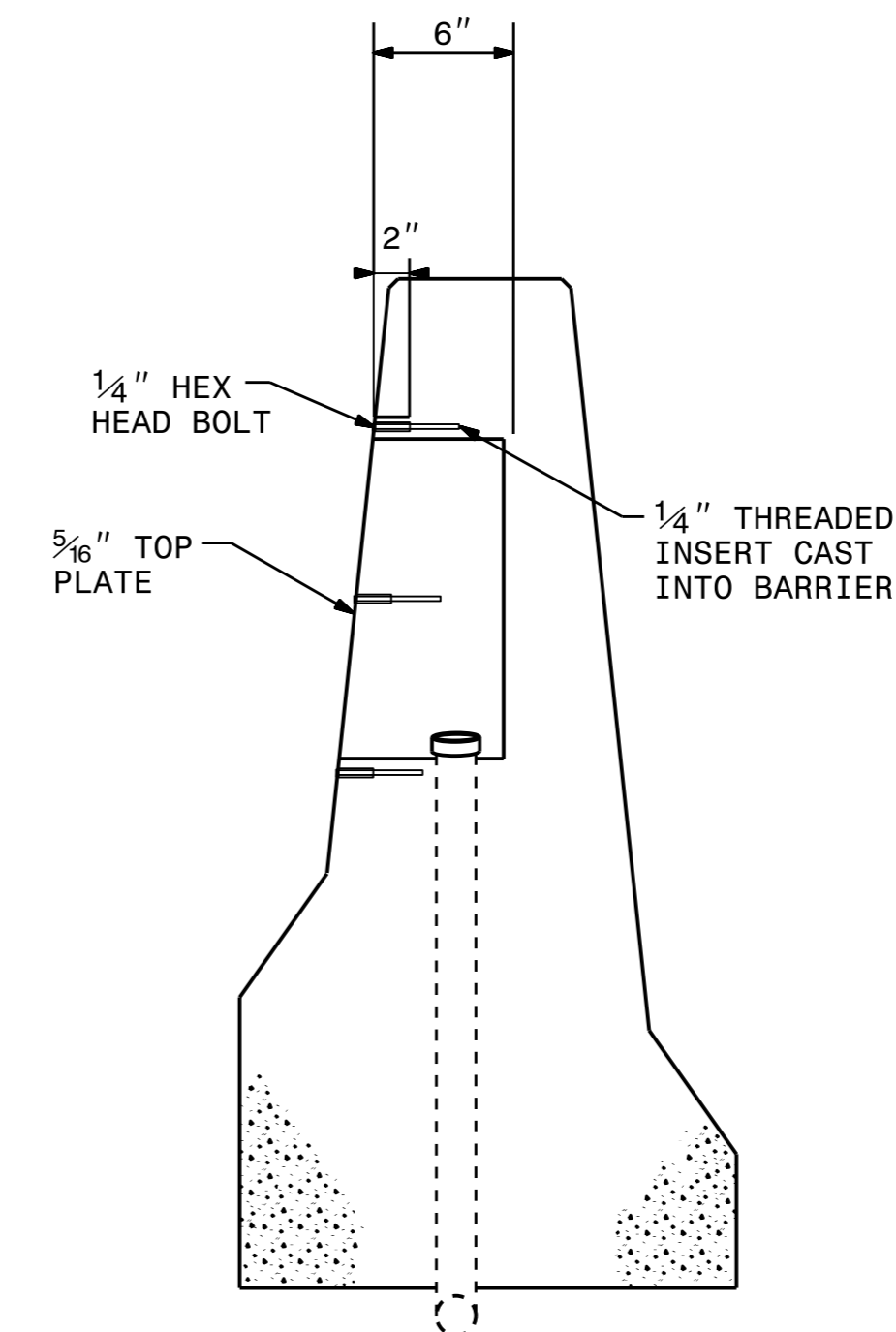
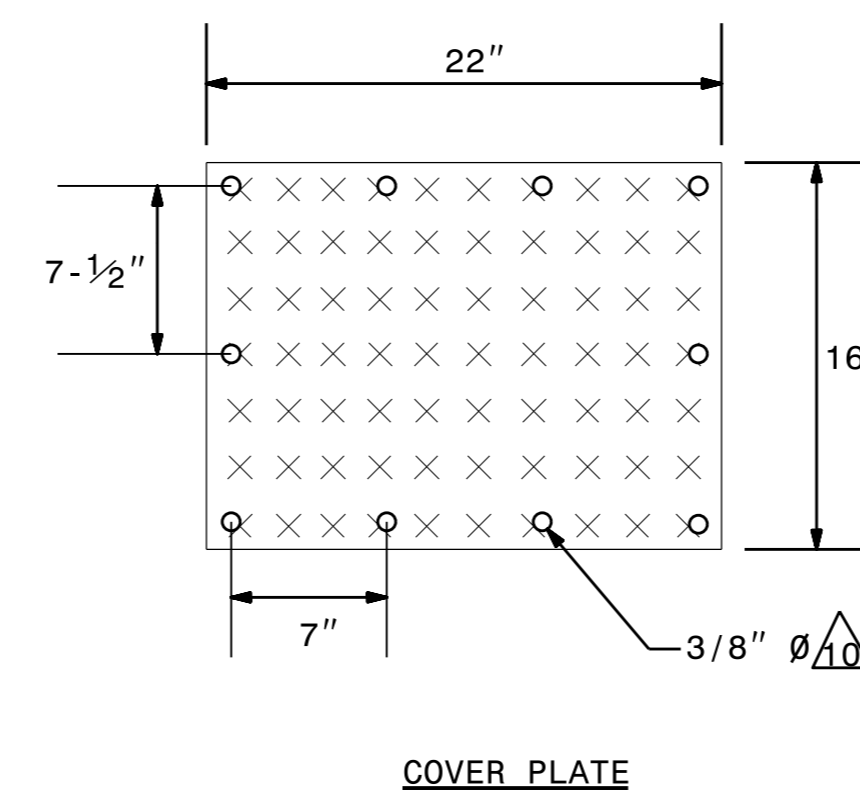
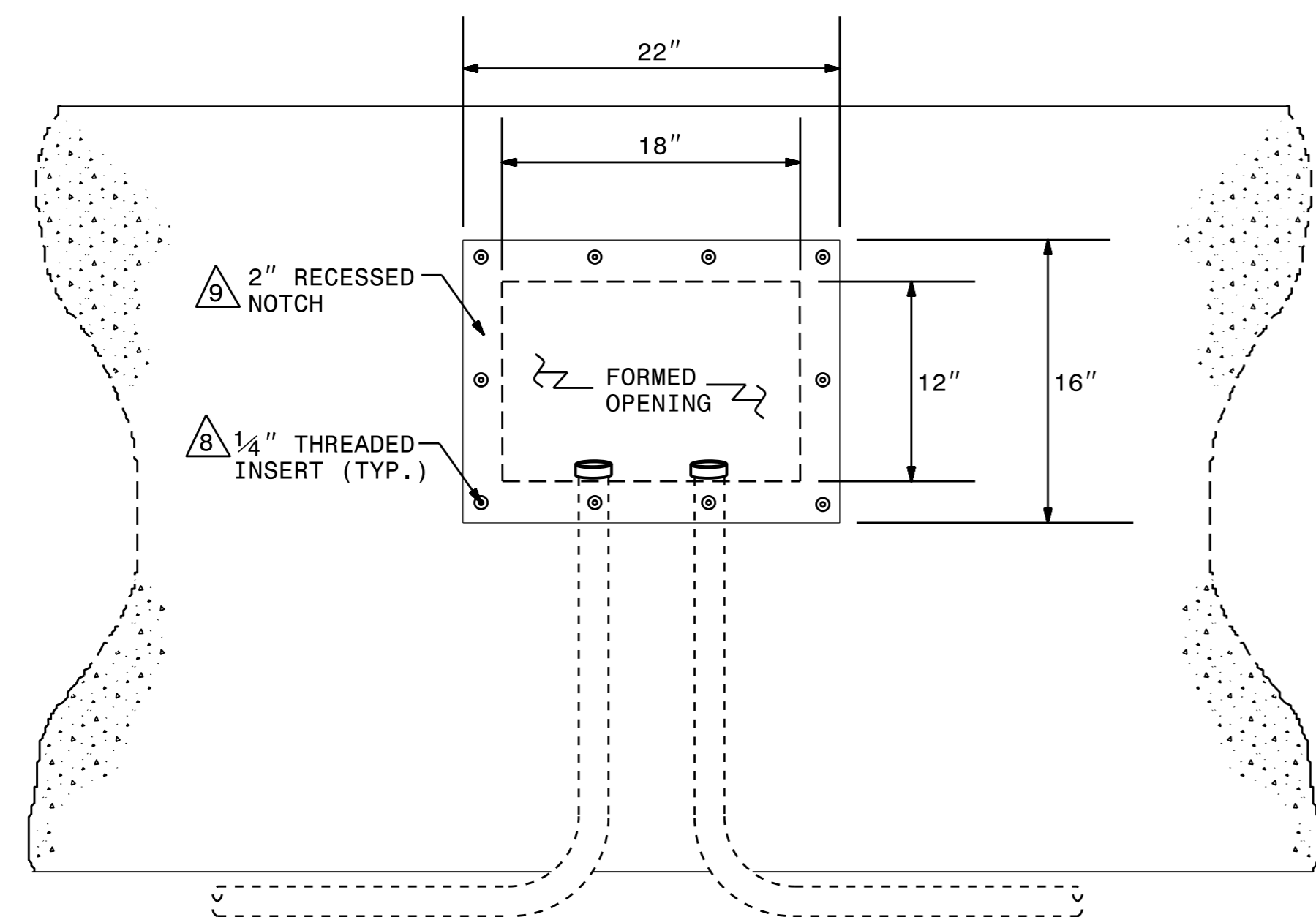
**DOCUMENT NOT CONSIDERED FINAL
UNLESS ALL SIGNATURES COMPLETED**



MEDIAN BARRIER FORMED OPENING DETAILS

NOTES

- 1 FORMED OPENINGS ARE 18" W X 12" L X 6" H.
- 2 CUT VERTICAL AND HORIZONTAL BARS AS SHOWN LEAVING 1", TYPICAL, BETWEEN BAR AND FORMED OPENING.
- 3 FEEDER CIRCUIT CONDUIT MAY BE INSTALLED IN THE BOTTOM OF MEDIAN BARRIER. TOP OF CONDUIT MUST BE A MINIMUM OF 2" BELOW FINISHED GRADE.
- 4 CONDUIT PROJECTION SHALL BE APPROXIMATELY 1-1/2" INTO FORMED OPENING.
- 5 INSTALL CONDUIT BUSHINGS ON ALL CONDUIT TERMINATIONS WITHIN THE FORMED OPENING.
- 6 POSITION OPENING TO ALLOW FOR A MINIMUM 2" CONCRETE COVER.
- 7 SLOPE THE BOTTOM OF THE FORMED OPENING WITH A 1/4":12" FALLOUT FOR WATER DRAINAGE.
- 8 THREADED INSERTS SHALL BE 1-1/2" FROM THE EDGE OF THE FORMED OPENING.
- 9 CONSTRUCT A RECESSED NOTCH IN BARRIER WALL SO THAT FACE OF TOP PLATE IS FLUSH WITH BARRIER AFTER PLATE IS INSTALLED. TOP PLATE SHALL BE 3/16" GALVANIZED STEEL WITH A CHECKERED FINISH.
- 10 FIELD DRILL 3/8" HOLES IN COVER PLATE TO ALIGN WITH THREADED INSERTS PLACED DURING BARRIER WALL FABRICATION.



FORMED OPENING COVER PLATE AND INSERT DETAILS

2			
1			
Rev.	Date	Description	Approved
NORTH CAROLINA DEPARTMENT OF TRANSPORTATION ROADWAY DESIGN LIGHTING/ELECTRICAL SECTION MEDIAN BARRIER FORMED OPENING DETAILS ON I-40, NEAR KELLY DR, W OF I-40/I-26 INTERCHANGE BUNCOMBE COUNTY			
Drawn By:	MSQ	Approved By:	RGH
		Dwg No.:	

04-JAN-2024 15:29
 R:\Lighting\12513_LE_PSH_E8.dgn
 msquod1 At 10:32:43 AM