

# SURVEY CONTROL SHEET

## W/EXISTING CENTERLINE ALIGNMENTS PRIOR TO CONSTRUCTION

**DATUM DESCRIPTION**

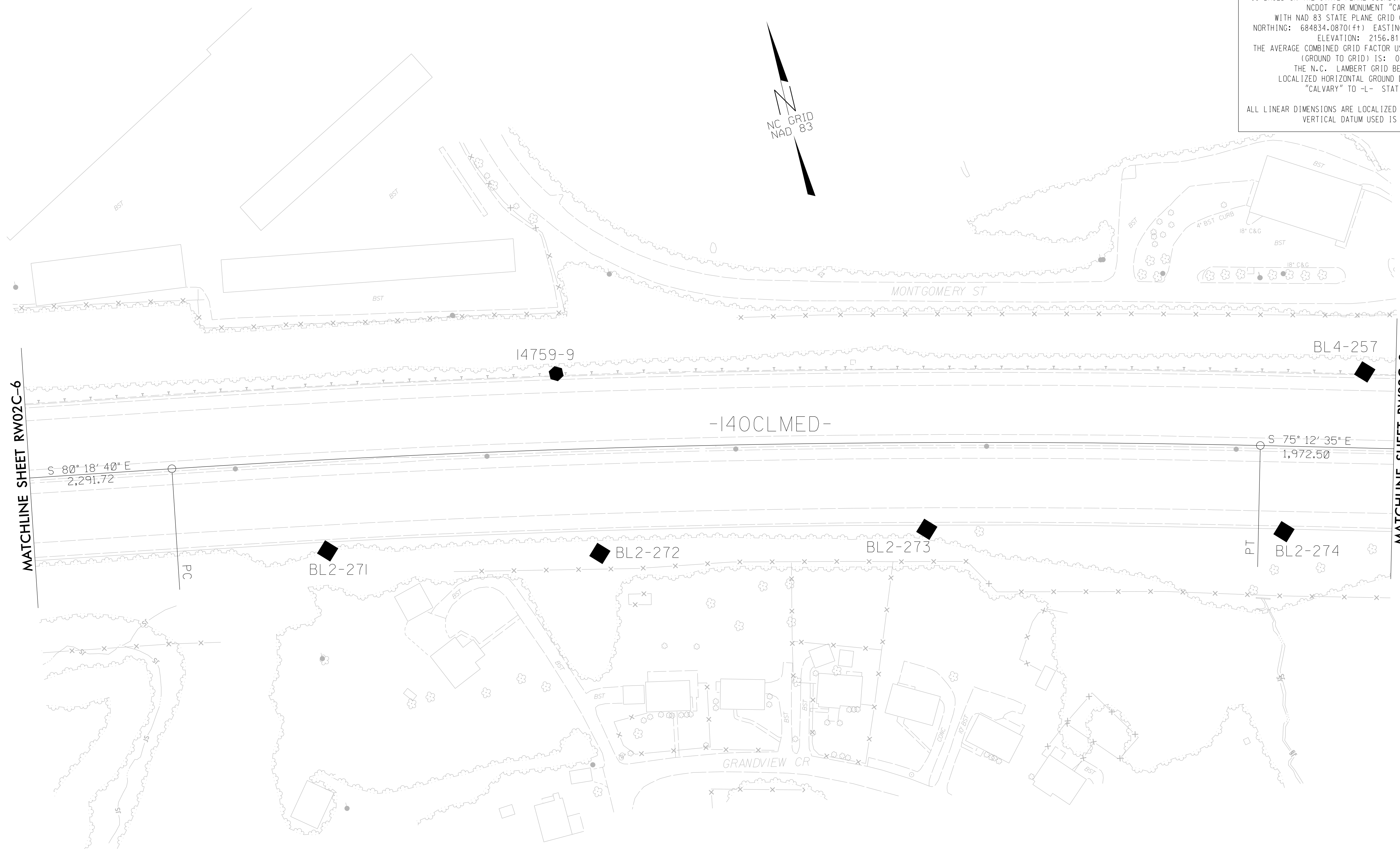
THE LOCALIZED COORDINATE SYSTEM DEVELOPED FOR THIS PROJECT IS BASED ON THE STATE PLANE COORDINATES ESTABLISHED BY NCDOT FOR MONUMENT "CALVARY" WITH NAD 83 STATE PLANE GRID COORDINATES OF

NORTHING: 684834.0870(±) EASTING: 934095.9080(±)  
ELEVATION: 2156.81(±)

THE AVERAGE COMBINED GRID FACTOR USED ON THIS PROJECT (GROUND TO GRID) IS: 0.9997841

THE N.C. LAMBERT GRID BEARING AND LOCALIZED HORIZONTAL GROUND DISTANCE FROM "CALVARY" TO -L- STATION IS

ALL LINEAR DIMENSIONS ARE LOCALIZED HORIZONTAL DISTANCES  
VERTICAL DATUM USED IS NAVD 88



**SEE SHEETS RW02C-19 THRU RW02C-22  
FOR FURTHER  
ALIGNMENT DETAILS**

**NOTES:**

1. PROJECT CONTROL WAS ESTABLISHED USING GNSS, THE GLOBAL NAVIGATION SATELLITE SYSTEM.
2. THE SURVEY CONTROL DATA FOR THIS PROJECT HAS BEEN COMPILED FROM VARIOUS SOURCES. IF FURTHER INFORMATION REGARDING PROJECT CONTROL IS NEEDED, PLEASE CONTACT THE LOCATION AND SURVEYS UNIT.

REVISIONS

I7-MAY-2023 12:44  
 V:\NC\Survey\1032212-17\_I-2513a-con-vam2\Survey\Control\Sheet Combination\I2513AA-AB-1s-RW02C-7.dgn  
 Jcgordon