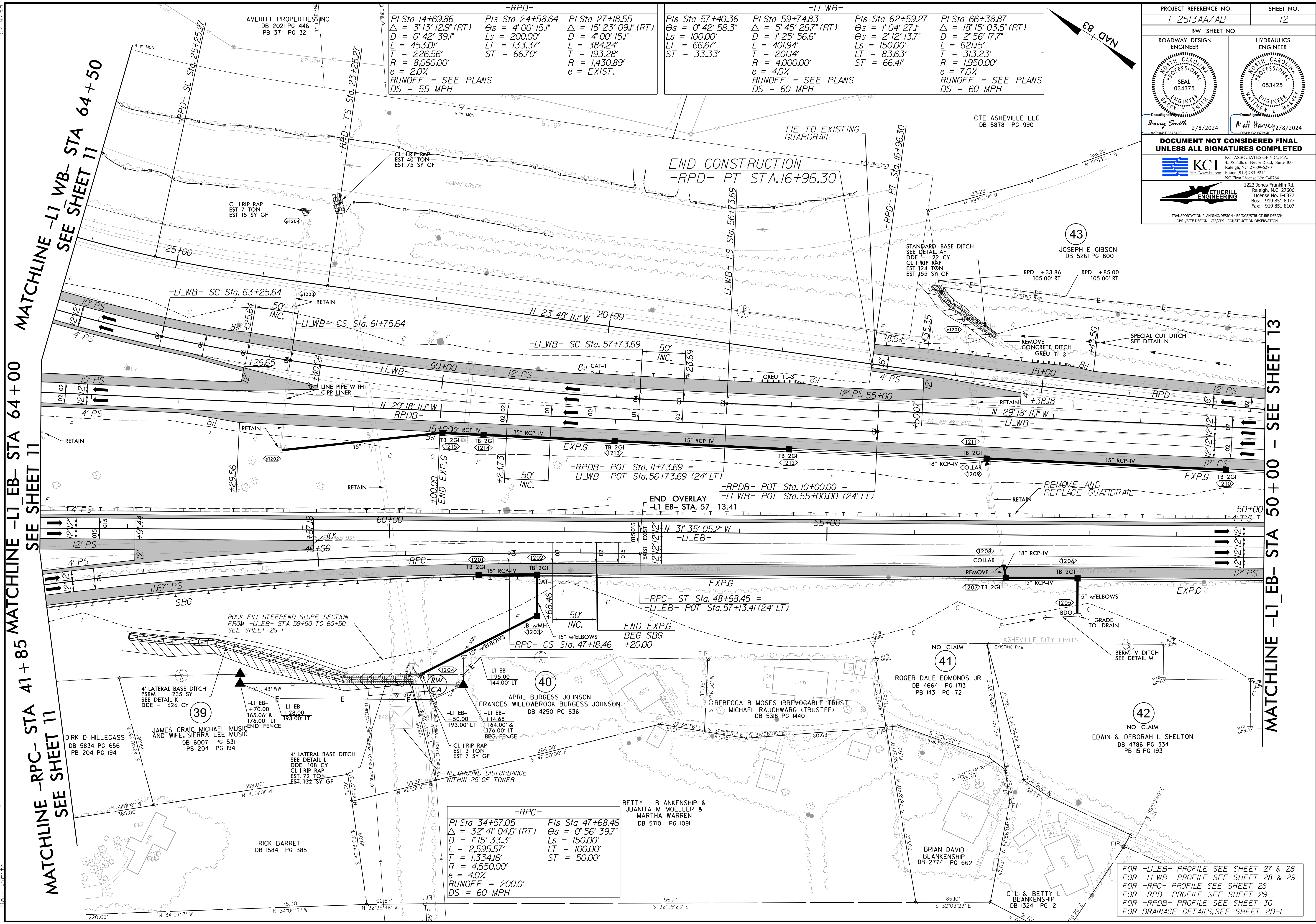


5/21/24

1/24/2024 1-2513AA\_rdy\_psh\_12.dgn  
Barry Smith



**-RPD-**

|  |  |  |
|--|--|--|
| PI Sta 14+69.86<br>Δ = 3°13'12.9" (RT)<br>D = 0'42'39.9"<br>L = 453.01'<br>T = 226.56'<br>R = 8,060.00'<br>e = 2.0%<br>RUNOFF = SEE PLANS<br>DS = 55 MPH | PIs Sta 24+58.64<br>Δs = 4'00'15.1"<br>Ls = 200.00'<br>LT = 133.37'<br>ST = 66.70' | PI Sta 27+18.55<br>Δ = 15'23'09.1" (RT)<br>D = 4'00'15.1"<br>L = 384.24'<br>T = 193.28'<br>R = 1,430.89'<br>e = EXIST. |
|--|--|--|

**-LI-WB-**

|   |   |   |   |
|---|---|---|---|
| PIs Sta 57+40.36<br>Δs = 0'42'58.3"<br>Ls = 100.00'<br>LT = 66.67'<br>ST = 33.33' | PI Sta 59+74.83<br>Δ = 5'45'26.7" (RT)<br>D = 1'25'56.6"<br>L = 401.94'<br>T = 201.4'<br>R = 4,000.00'<br>e = 4.0%<br>RUNOFF = SEE PLANS<br>DS = 60 MPH | PIs Sta 62+59.27<br>Δs = 1'04'27.1"<br>D = 2'12'13.7"<br>Ls = 150.00'<br>LT = 83.63'<br>ST = 66.41' | PI Sta 66+38.87<br>Δ = 18'15'03.5" (RT)<br>D = 2'56'17.7"<br>L = 621.15'<br>T = 313.23'<br>R = 1,950.00'<br>e = 7.0%<br>RUNOFF = SEE PLANS<br>DS = 60 MPH |
|---|---|---|---|

**-RPC-**

|  |  |
|--|--|
| PI Sta 34+57.05<br>Δ = 32'41'04.6" (RT)<br>D = 1'15'33.3"<br>L = 2,595.57'<br>T = 1,334.16'<br>R = 4,550.00'<br>e = 4.0%<br>RUNOFF = 200.0'<br>DS = 60 MPH | PIs Sta 47+68.46<br>Δs = 0'56'39.7"<br>Ls = 150.00'<br>LT = 100.00'<br>ST = 50.00' |
|--|--|

|   |   |
|---|---|
| PROJECT REFERENCE NO.<br>1-2513AA/AB                                | SHEET NO.<br>12   |
| ROADWAY DESIGN ENGINEER<br>BARRY C SMITH<br>SEAL 034375<br>2/8/2024 | HYDRAULICS ENGINEER<br>MATT HANNEY<br>SEAL 053425<br>2/8/2024 |
| DOCUMENT NOT CONSIDERED FINAL<br>UNLESS ALL SIGNATURES COMPLETED    |   |
|   |   |
|   |   |

MATCHLINE -LI-EB- STA 64+00 SEE SHEET 11

MATCHLINE -RPC- STA 41+85 SEE SHEET 11

MATCHLINE -LI-WB- STA 64+50 SEE SHEET 11

MATCHLINE -LI-EB- STA 50+00 - SEE SHEET 13

FOR -LI-EB- PROFILE SEE SHEET 27 & 28  
FOR -LI-WB- PROFILE SEE SHEET 28 & 29  
FOR -RPC- PROFILE SEE SHEET 26  
FOR -RPD- PROFILE SEE SHEET 29  
FOR -RPDB- PROFILE SEE SHEET 30  
FOR DRAINAGE DETAILS, SEE SHEET 2D-1