

5/7/14/99

**-Y\_EB-**

PI Sta 50+80.91
$\Delta = 19^{\circ} 00' 54.7"$ (LT)
D = 1' 29' 59.3"
L = 1,267.85'
T = 639.81'
R = 3,820.22'
e = EXIST.

**-RPDB-**

PI Sta 21+60.54	PI Sta 23+33.75	PIs Sta 26+03.71	PI Sta 32+50.35
$\Delta = 0^{\circ} 39' 41.8"$ (LT)	$\Delta = 0^{\circ} 39' 41.8"$ (RT)	$\Theta_s = 3^{\circ} 30' 00.0"$	$\Delta = 39^{\circ} 01' 06.9"$ (LT)
D = 0' 22' 55.1"	D = 0' 22' 55.1"	Ls = 200.00'	D = 3' 30' 00.0"
L = 173.21'	L = 173.21'	LT = 133.36'	L = 1,114.82'
T = 86.60'	T = 86.60'	ST = 66.69'	T = 580.00'
R = 15,000.00'	R = 15,000.00'		R = 1,637.02'
e = EXIST.	e = EXIST.		e = EXIST.

**-RPD-**

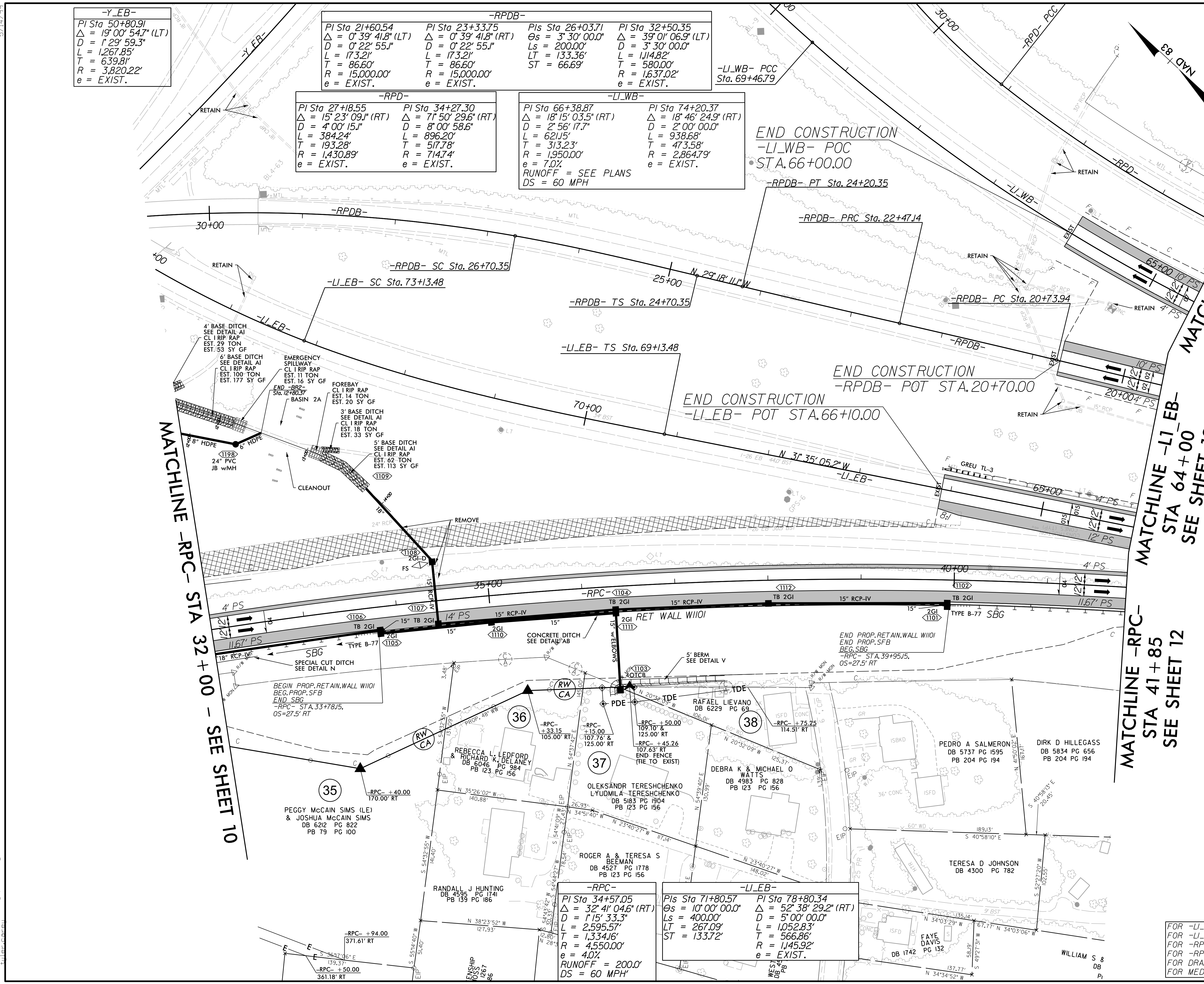
PI Sta 27+18.55	PI Sta 34+27.30
$\Delta = 15^{\circ} 23' 09.1"$ (RT)	$\Delta = 71^{\circ} 50' 29.6"$ (RT)
D = 4' 00' 15.1"	D = 8' 00' 58.6"
L = 384.24'	L = 896.20'
T = 193.28'	T = 517.78'
R = 1,430.89'	R = 714.74'
e = EXIST.	e = EXIST.

**-LI\_WB-**

PI Sta 66+38.87	PI Sta 74+20.37
$\Delta = 18^{\circ} 15' 03.5"$ (RT)	$\Delta = 18^{\circ} 46' 24.9"$ (RT)
D = 2' 56' 17.7"	D = 2' 00' 00.0"
L = 621.15'	L = 938.68'
T = 313.23'	T = 473.58'
R = 1,950.00'	R = 2,864.79'
e = EXIST.	e = EXIST.

-LI\_WB- PCC  
Sta. 69+46.79

PROJECT REFERENCE NO. 1-2513AA/AB	SHEET NO. 11
RW SHEET NO.	
ROADWAY DESIGN ENGINEER BARRY C. SMITH SEAL 034375 DocuSign Barry Smith 2/8/2024	HYDRAULICS ENGINEER MATTHEW L. HALEY SEAL 053425 DocuSign Matt Harley 2/8/2024
<b>DOCUMENT NOT CONSIDERED FINAL UNLESS ALL SIGNATURES COMPLETED</b>	
1223 Jones Franklin Rd. Raleigh, N.C. 27606 License No. F-43377 Bus: 919 851 8077 Fax: 919 851 8107 TRANSPORTATION PLANNING/DESIGN - BRIDGE/STRUCTURE DESIGN CIVIL/SITE DESIGN - GIS/GPS - CONSTRUCTION OBSERVATION	



MATCHLINE -RPC- STA 32+00 - SEE SHEET 10

MATCHLINE -LI\_WB- STA 64+50 SEE SHEET 12  
MATCHLINE -LI\_EB- STA 64+00 SEE SHEET 12  
MATCHLINE -RPC- STA 41+85 SEE SHEET 12

END CONSTRUCTION  
-LI\_WB- POC  
STA. 66+00.00

END CONSTRUCTION  
-RPDB- POT STA. 20+70.00  
END CONSTRUCTION  
-LI\_EB- POT STA. 66+10.00

**-RPC-**

PI Sta 34+57.05
$\Delta = 32^{\circ} 41' 04.6"$ (RT)
D = 1' 15' 33.3"
L = 2,595.57'
T = 1,334.16'
R = 4,550.00'
e = 4.0'
RUNOFF = 200.0'
DS = 60 MPH

**-LI\_EB-**

PIs Sta 71+80.57	PI Sta 78+80.34
$\Theta_s = 10^{\circ} 00' 00.0"$	$\Delta = 52^{\circ} 38' 29.2"$ (RT)
Ls = 400.00'	D = 5' 00' 00.0"
LT = 267.09'	L = 1,052.83'
ST = 133.72'	T = 566.86'
	R = 1,145.92'
	e = EXIST.

PAVEMENT REMOVAL

FOR -LI\_EB- PROFILE SEE SHEET 28  
FOR -LI\_WB- PROFILE SEE SHEET 29  
FOR -RPC- PROFILE SEE SHEET 26  
FOR -RPDB- PROFILE SEE SHEET 30  
FOR DRAINAGE DETAILS, SEE SHEETS 20-1 & 20-5  
FOR MEDIA FILTER BASINS, SEE SHEETS 20-5 TO 20-8

12/1/2023 1-2513AA\_rdy\_psh\_11.dgn