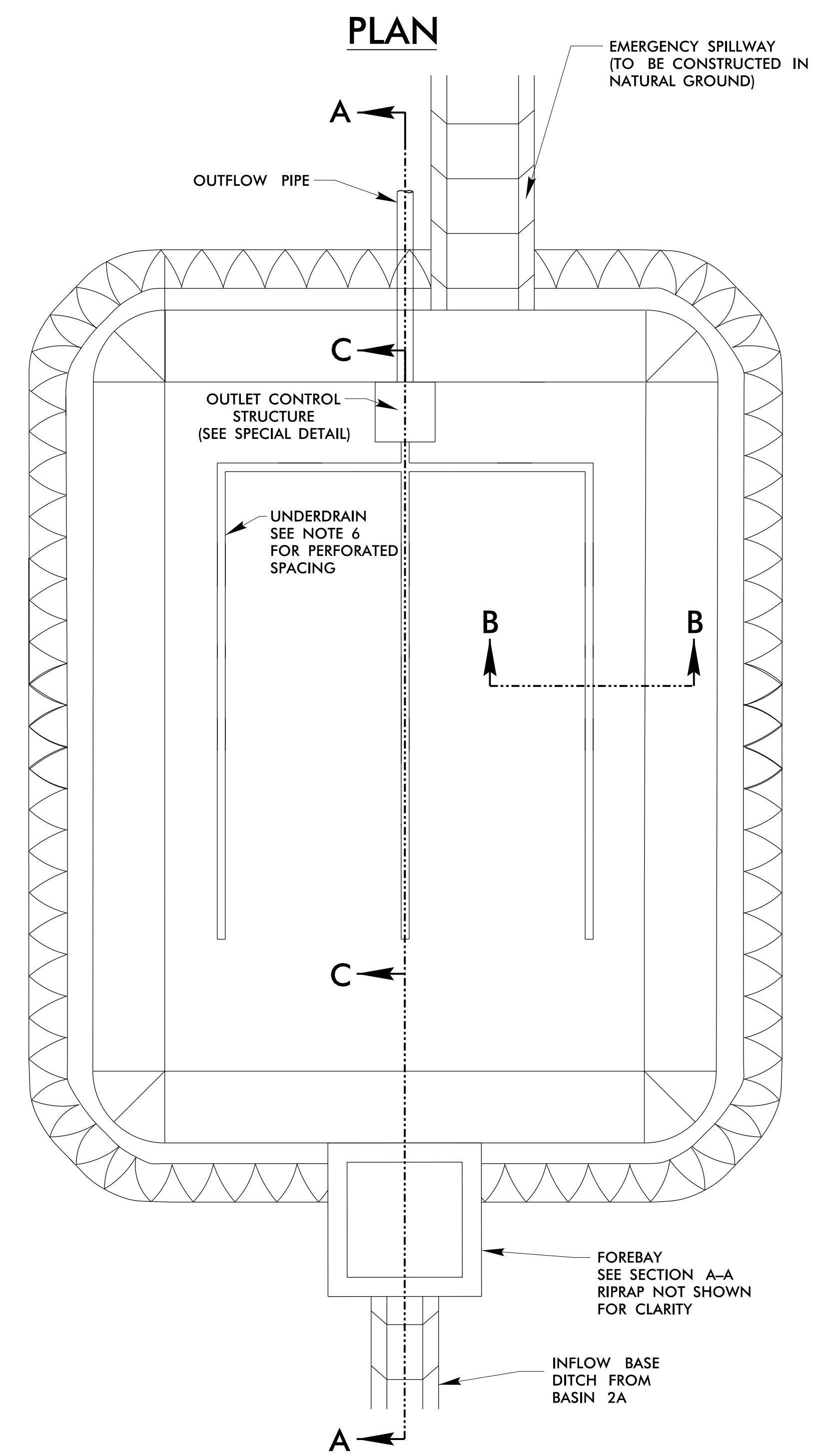


5/14/2024

# FILTRATION BASIN DETAILS (BASIN 2B)

PROJECT REFERENCE NO. 1-2513AA/AB	SHEET NO. 2D-2
RW SHEET NO.	
HYDRAULICS ENGINEER	
<p><b>DOCUMENT NOT CONSIDERED FINAL</b> <b>UNLESS ALL SIGNATURES COMPLETED</b></p>	

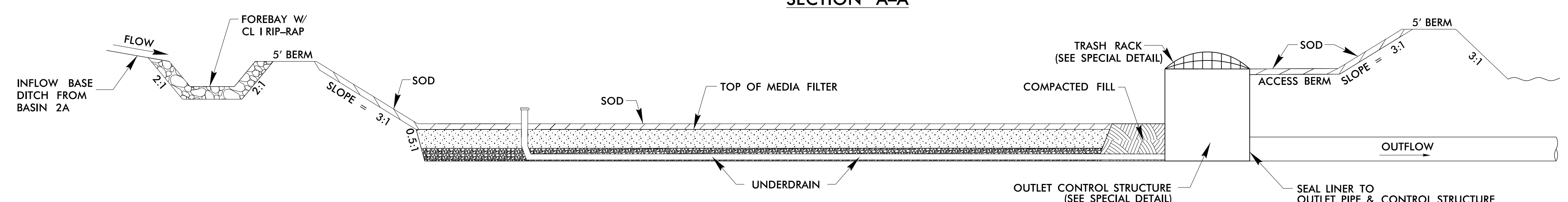
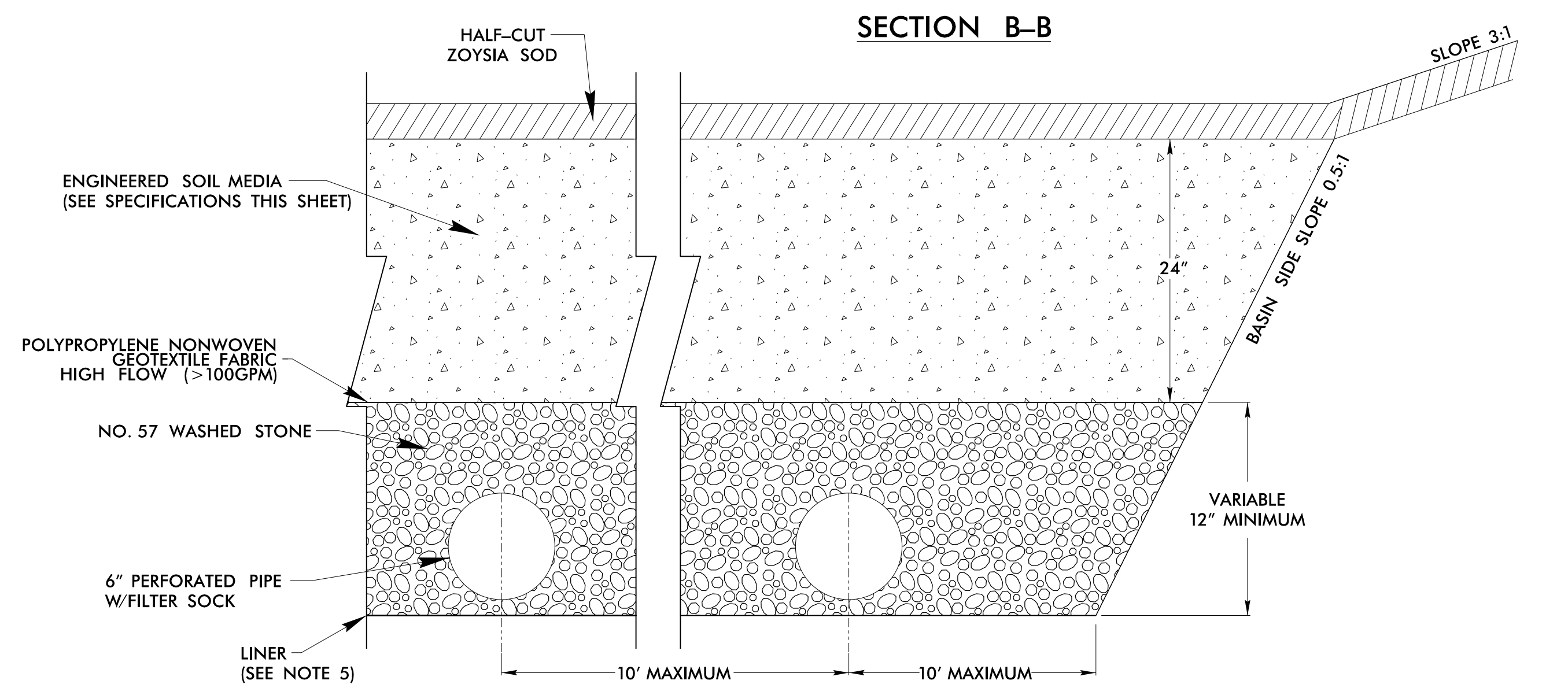
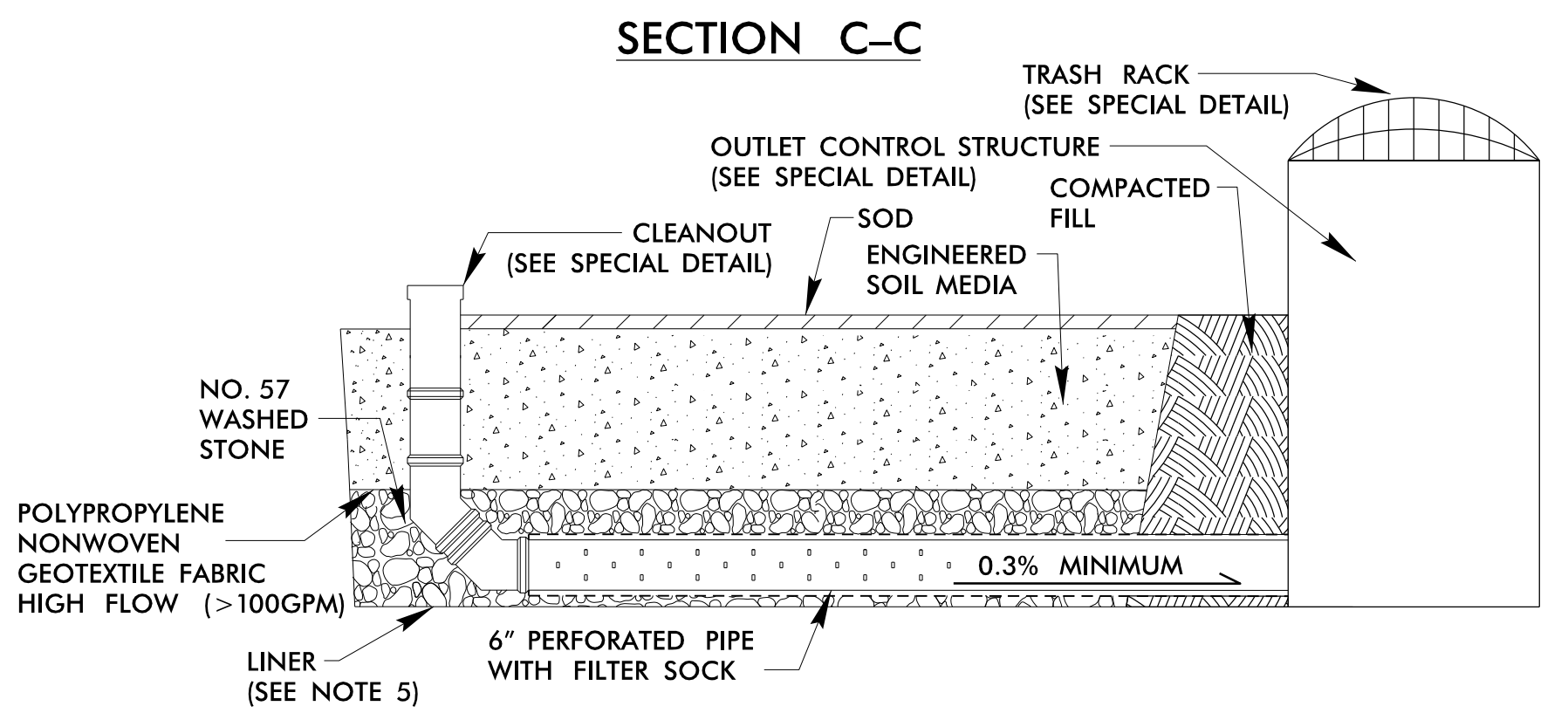


- NOTES**
1. AN EMERGENCY SPILLWAY SHOULD BE INCORPORATED WHERE SITE PERMITS.
  2. AN ACCESS BERM SHOULD BE PROVIDED FOR MAINTENANCE.
  3. THE 6-INCH UNDERDRAIN IS THE PRIMARY DRAWDOWN DEVICE.
  4. UNDERDRAIN PIPES SHOULD BE PLACED A MAXIMUM OF 10 FEET FROM THE EDGE OF THE BASIN AND MUST HAVE A MAXIMUM OF 10 FEET BETWEEN THE PERFORATED UNDERDRAIN PIPES.
  5. UNDERDRAIN SHOULD BE BEDDED ON A THIN LAYER OF NO.57 WASHED STONE AND BACKFILLED TO A TOTAL MINIMUM STONE DEPTH OF 12 INCHES.
  6. UNDERDRAIN PERFORATED PIPE HOLES ARE 3/8 INCH IN DIAMETER AND LONGITUDINALLY SPACED 6 INCHES ON CENTER ALONG 4 ROWS.
  7. TOP OF MEDIA FILTER MUST BE LEVEL.

**REFERENCED SPECIAL DETAILS**

FOR "OUTLET CONTROL STRUCTURE DETAILS" SEE SHEET 2D-8  
FOR "TRASH RACKS DETAIL" SEE SHEET 2D-9

- SPECIFICATIONS**
- ENGINEERED SOIL MEDIA SHALL CONSIST OF:
- (1) HOMOGENOUS SOIL MIX OF 85-88 PERCENT BY WEIGHT SAND (USDA SOIL TEXTURAL CLASSIFICATION), 8 TO 12 PERCENT FINES (SILT AND CLAY), AND 2 TO 5 PERCENT ORGANIC MATTER (ORGANIC MATTER SHALL BE LEAF OR BARK COMPOST, OR SIMILAR, AND SHALL NOT BE ANIMAL MANURE).
  - (2) P-INDEX BETWEEN 10 AND 30
  - (3) PH VALUE BETWEEN 5.5 - 7.5
  - (4) PERMEABILITY BETWEEN 1 AND 2 INCHES/HOUR MINIMUM
  - (5) BE UNIFORM AND FREE OF STONES, STUMPS, ROOTS OR OTHER SIMILAR MATERIAL GREATER THAN 2 INCHES



\*NOT TO SCALE\*

1/25/2024 2:26:24 PM 1-2513AA-hyd-Detail.sxdgn