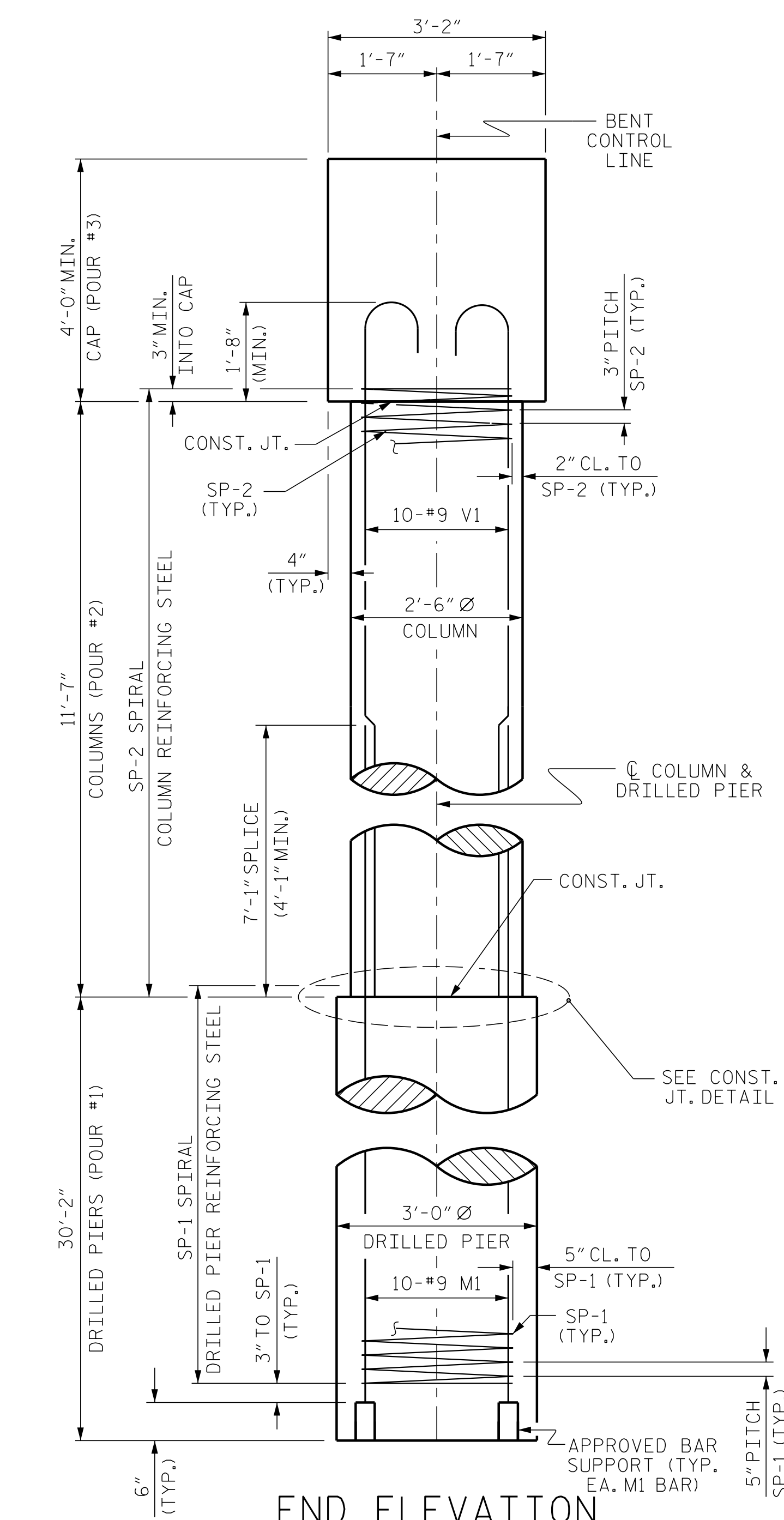
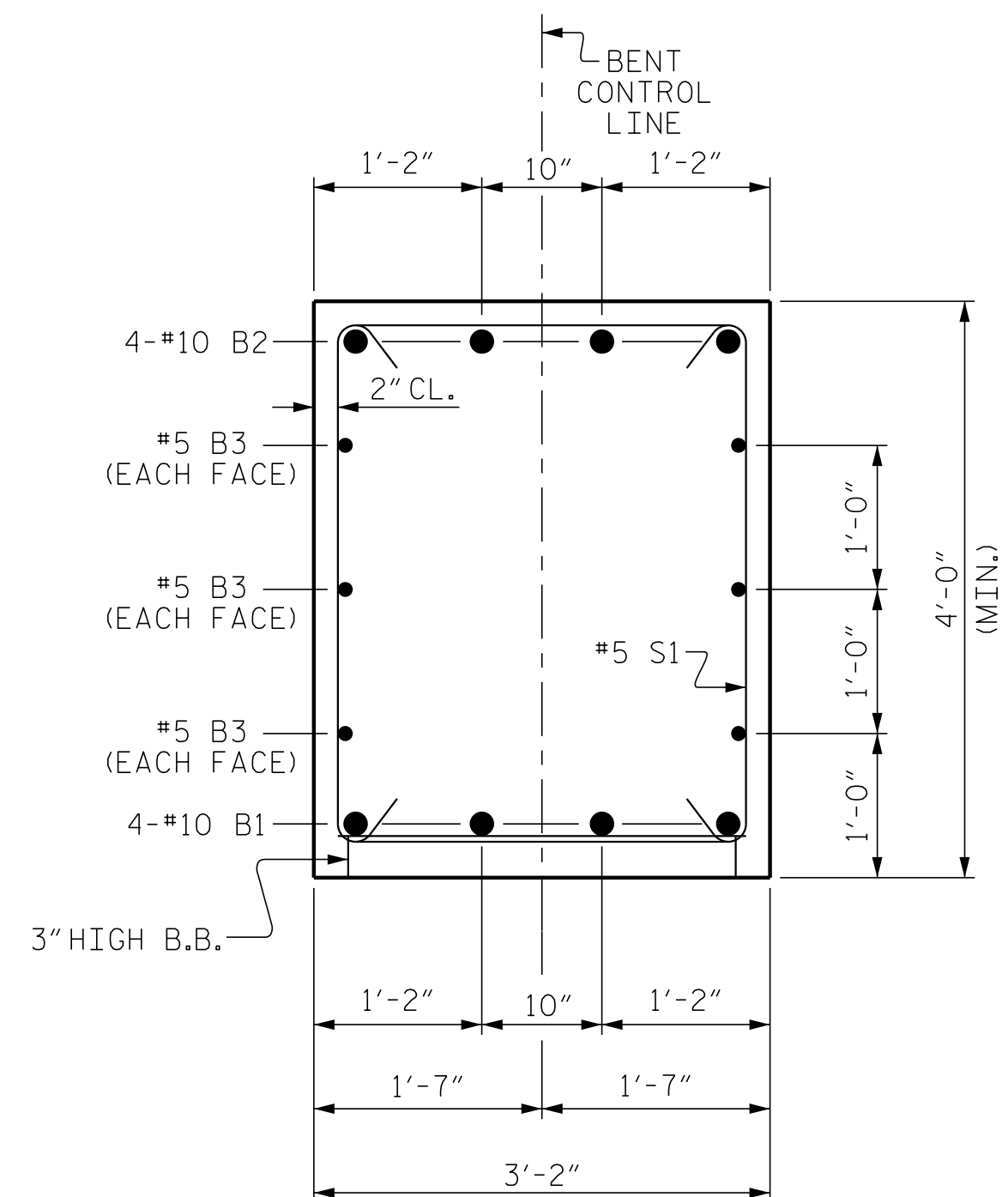


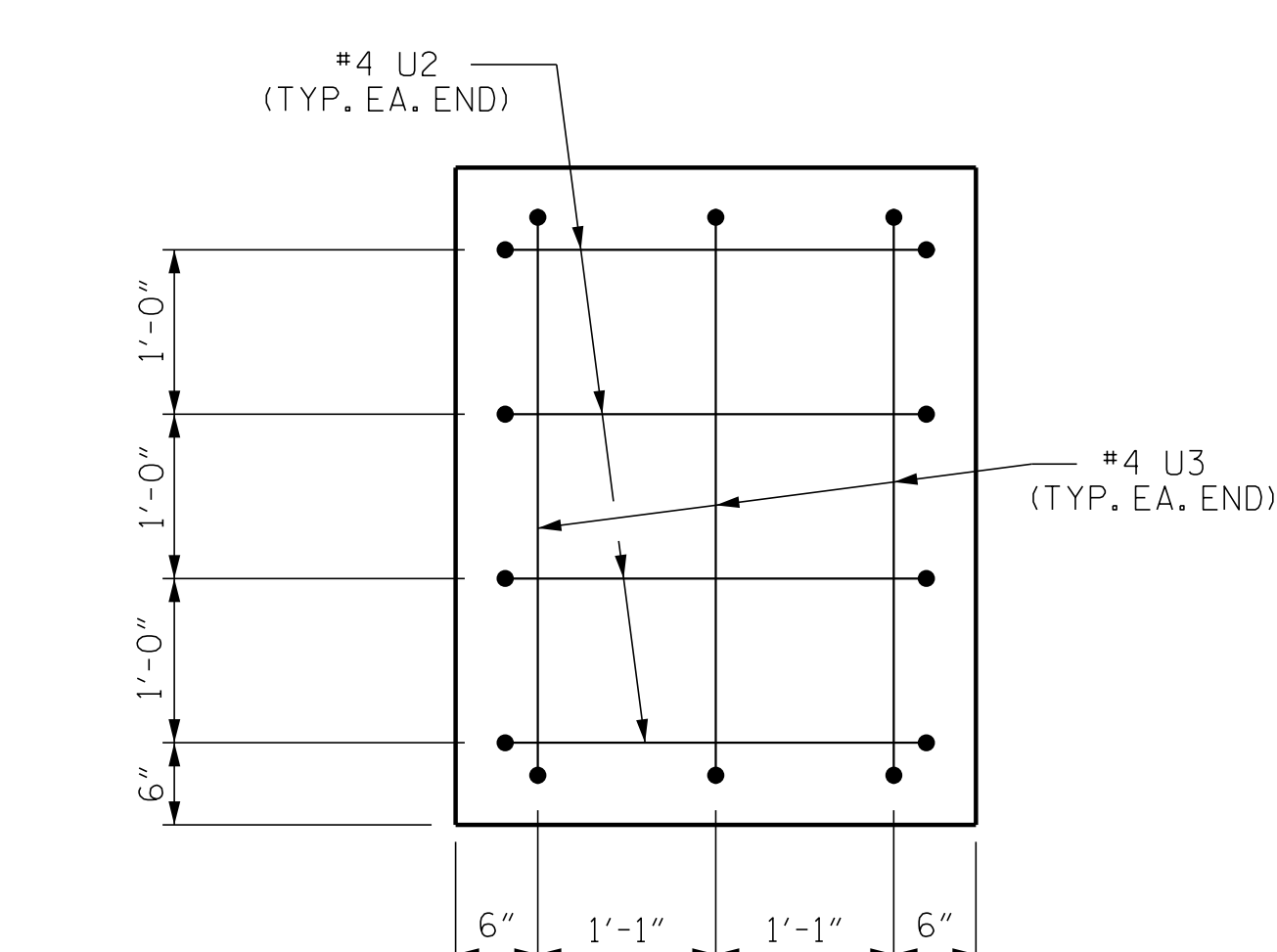
PLAN OF DRILLED PIERS & COLUMNS



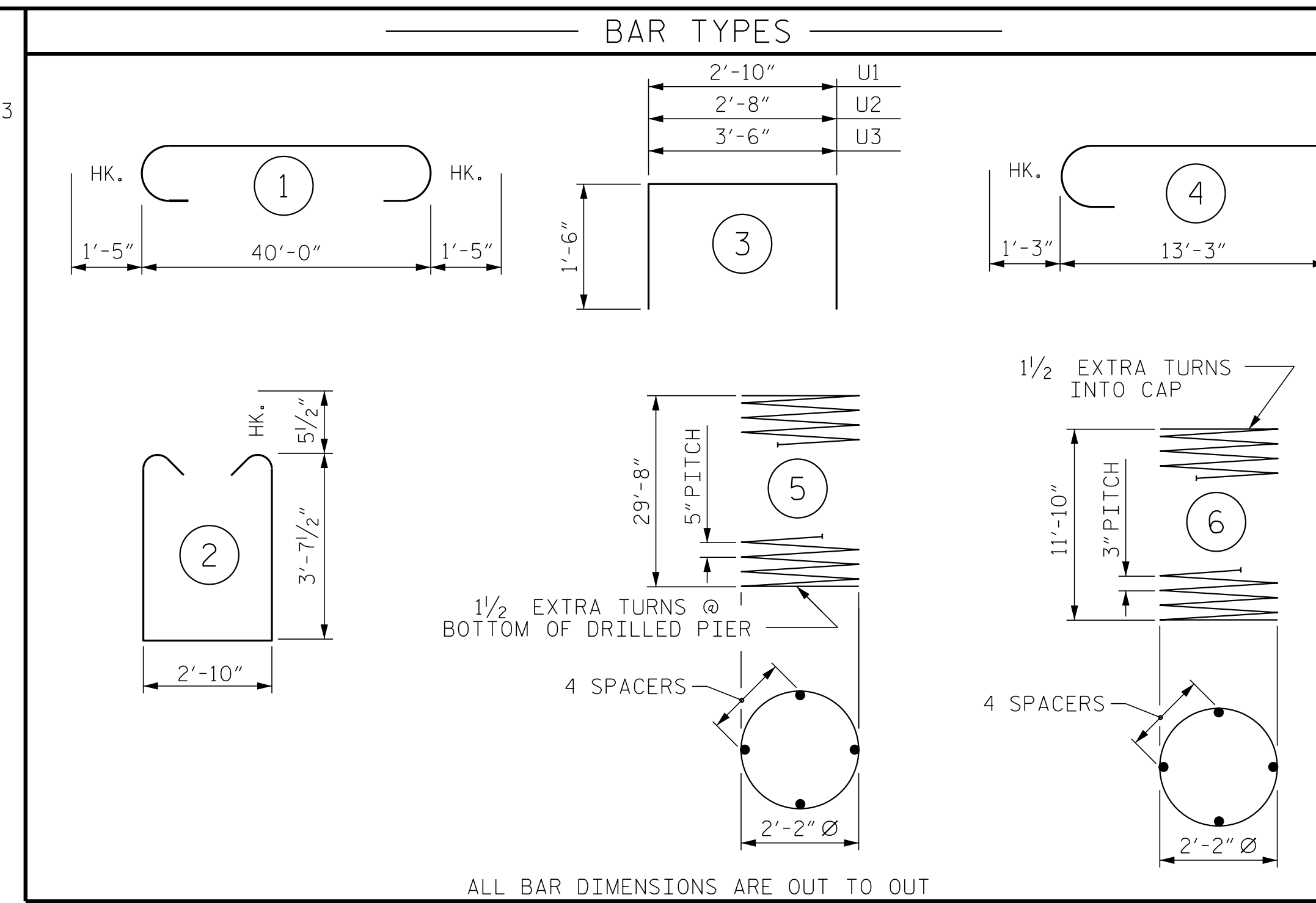
END ELEVATION



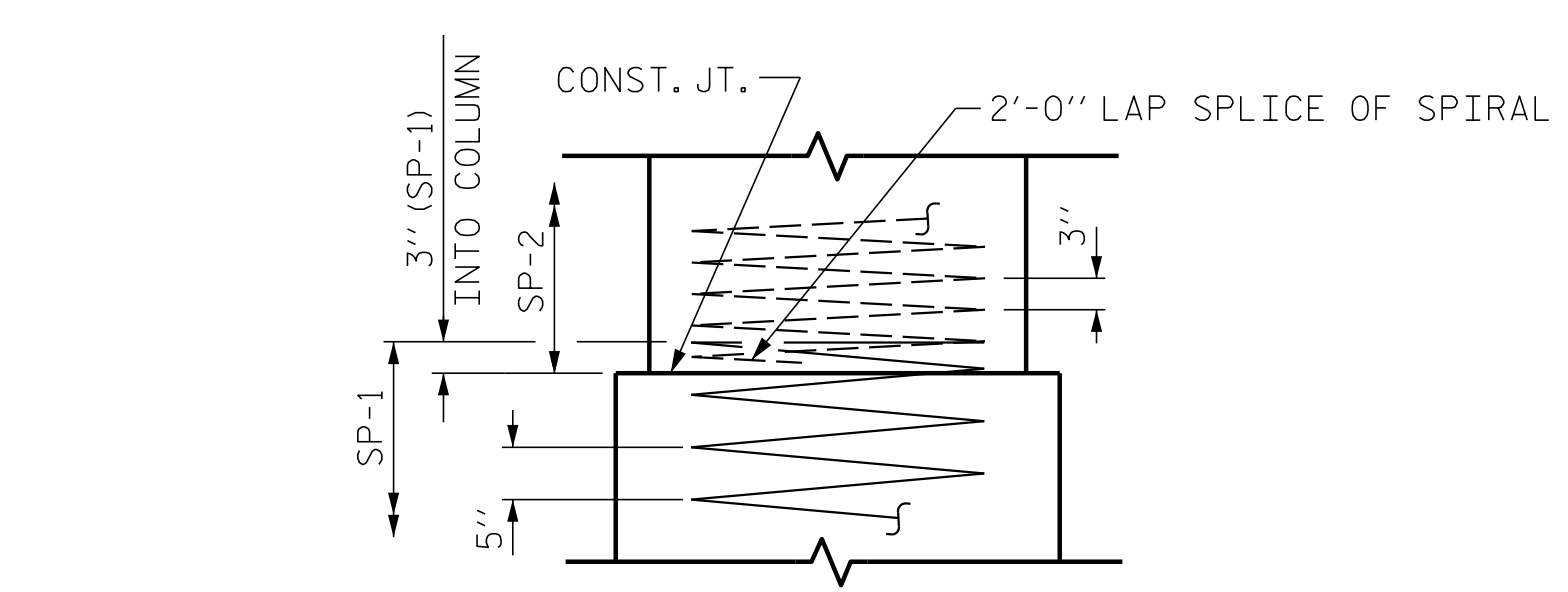
SECTION A-A



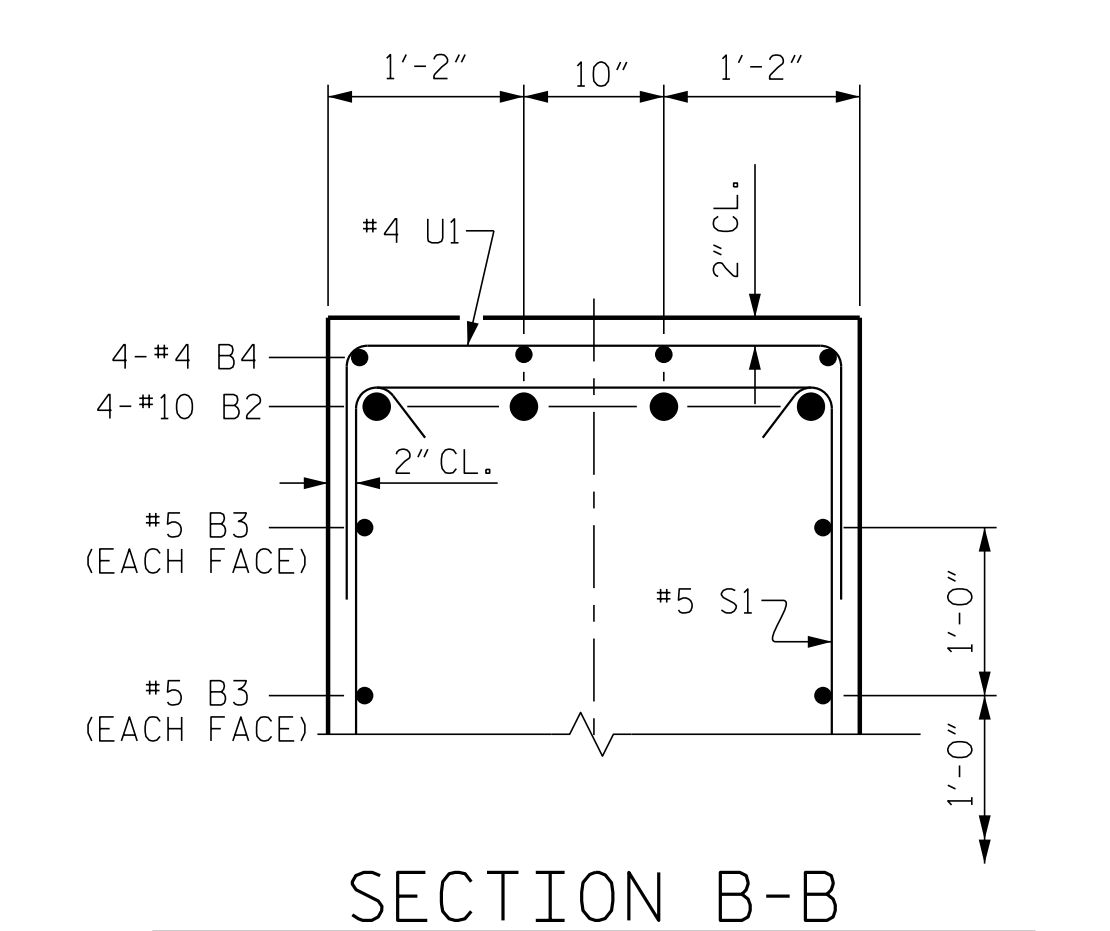
END OF CAP VIEW
(TYPICAL BOTH ENDS)



ALL BAR DIMENSIONS ARE OUT TO OUT



CONSTRUCTION JOINT DETAIL

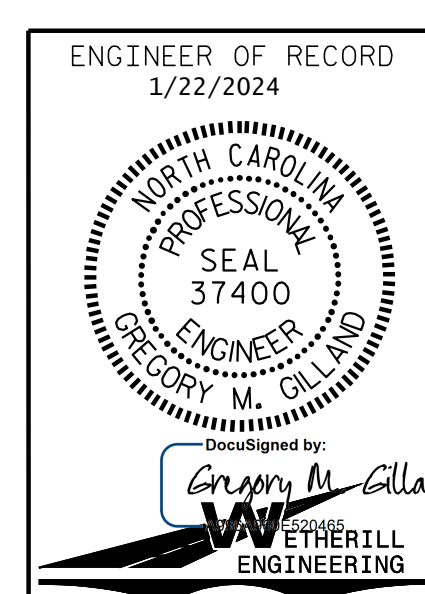


SECTION B-B

BILL OF MATERIAL

BENT No. 1					
BAR	NO.	SIZE	TYPE	LENGTH	WEIGHT
B1	4	#10	STR	40'-0"	688
B2	4	#10	1	42'-10"	737
B3	6	#5	STR	40'-2"	251
B4	4	#4	STR	3'-8"	10
M1	30	#9	STR	36'-9"	3,749
S1	42	#5	2	11'-0"	482
U1	36	#4	3	5'-10"	140
U2	8	#4	3	5'-8"	30
U3	6	#4	3	6'-6"	26
V1	30	#9	4	14'-6"	1,479
REINFORCING STEEL					7,592 LBS.
SP-1	3	*	5	484'-3"	1,515
SP-2	3	**	6	327'-5"	656
SPIRAL COLUMN REINFORCING STEEL					2,171 LBS.
* THE SP-1 SPIRAL REINFORCING STEEL SHALL BE W31 OR D-31 COLD DRAWN WIRE OR #5 PLAIN OR DEFORMED BAR					
** THE SP-2 SPIRAL REINFORCING STEEL SHALL BE W20 OR D-20 COLD DRAWN WIRE OR #4 PLAIN OR DEFORMED BAR					
CLASS A CONCRETE BREAKDOWN					
POUR #2 (COLUMNS)					6.3 C.Y.
POUR #3 (CAP)					19.6 C.Y.
TOTAL CLASS A CONCRETE					25.9 C.Y.

PROJECT NO. BR-0062
 ANSON COUNTY
 STATION: 18+07.50 -L-
 SHEET 2 OF 2



STATE OF NORTH CAROLINA
 DEPARTMENT OF TRANSPORTATION
 RALEIGH
 SUBSTRUCTURE
 BENT No. 1

REVISIONS					
NO.	BY:	DATE:	NO.	BY:	DATE:
1			3		
2			4		

SHEET NO.
S-28
TOTAL SHEETS
35

DOCUMENT NOT CONSIDERED FINAL
 UNLESS ALL SIGNATURES COMPLETED

PA:2020.0130.01_BR-0062_Structures\DCM\BR-0062_SD_BT_0300 14.dgn
 1/19/2024 9:38:43 AM

DRAWN BY: G. GILLAND DATE: 10-23
 CHECKED BY: J. DILWORTH DATE: 10-23