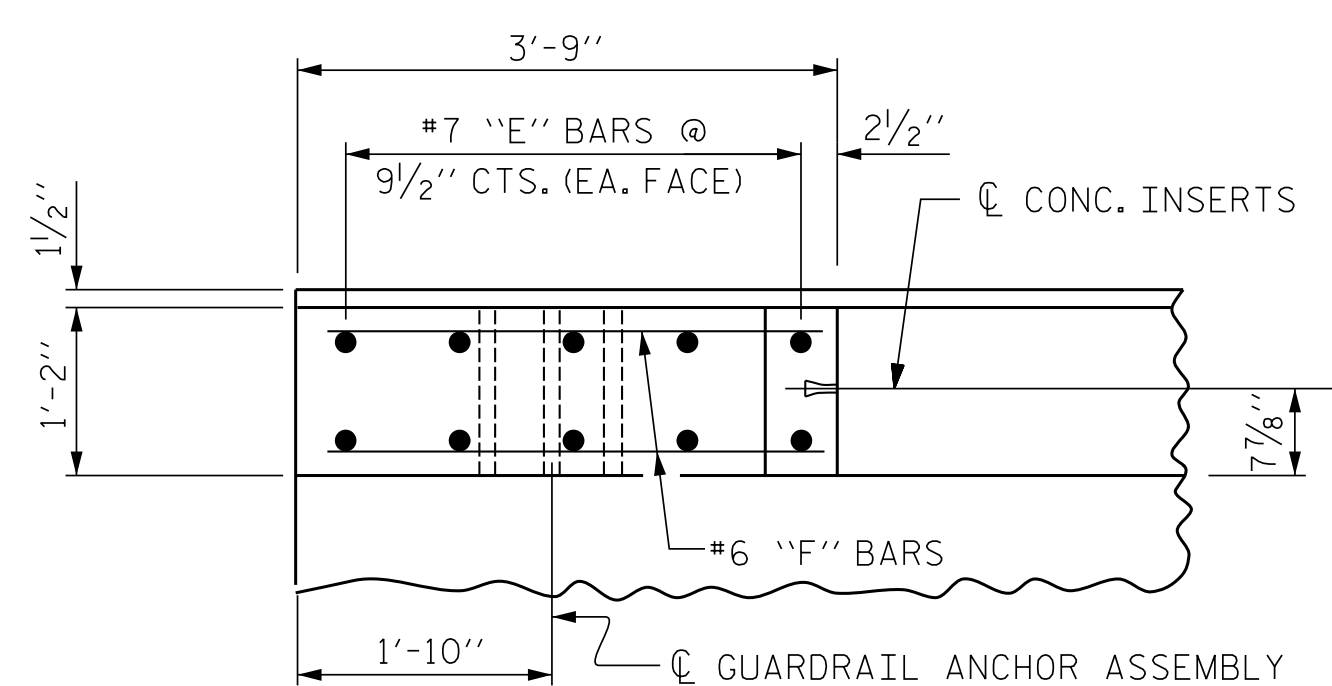
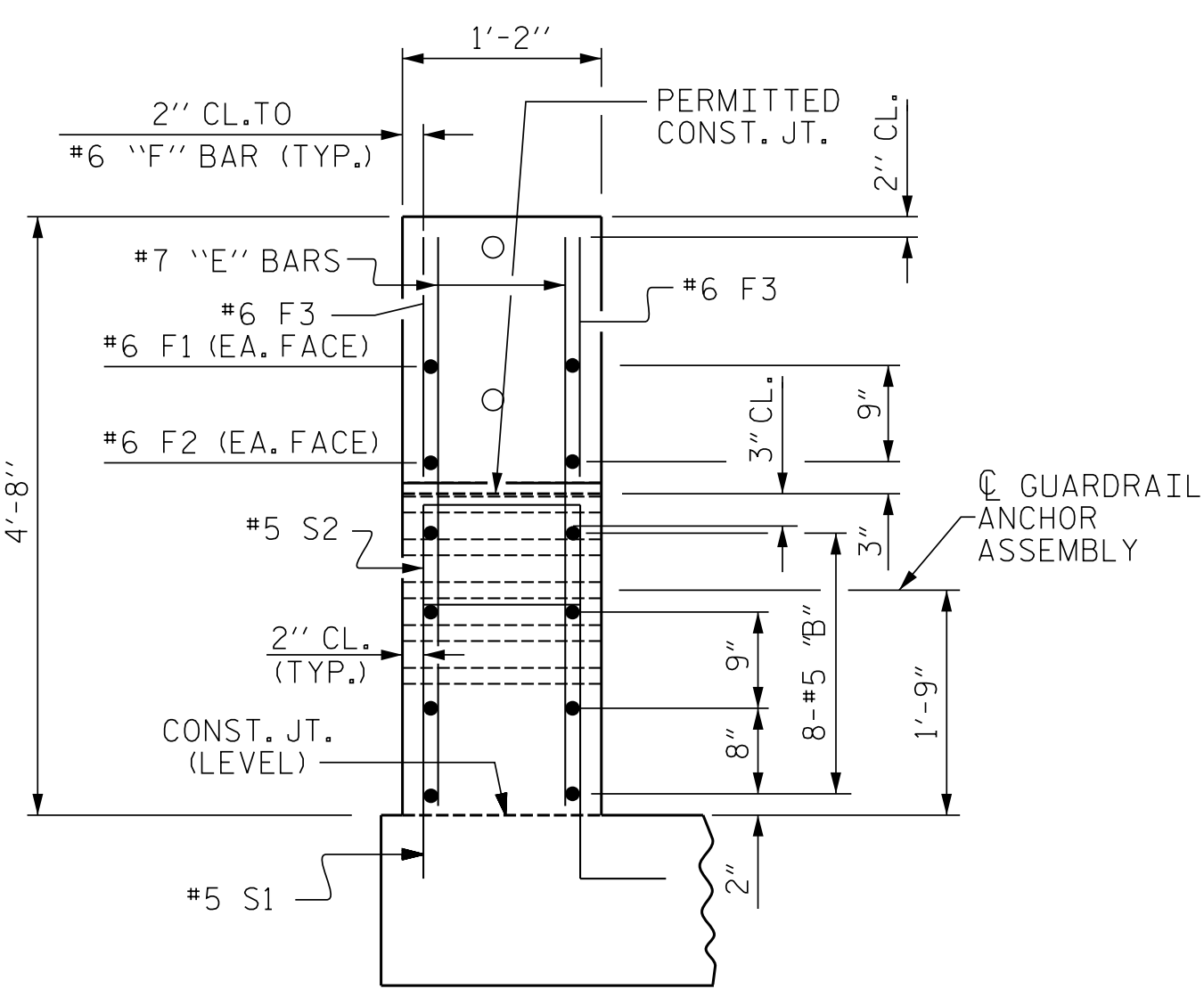


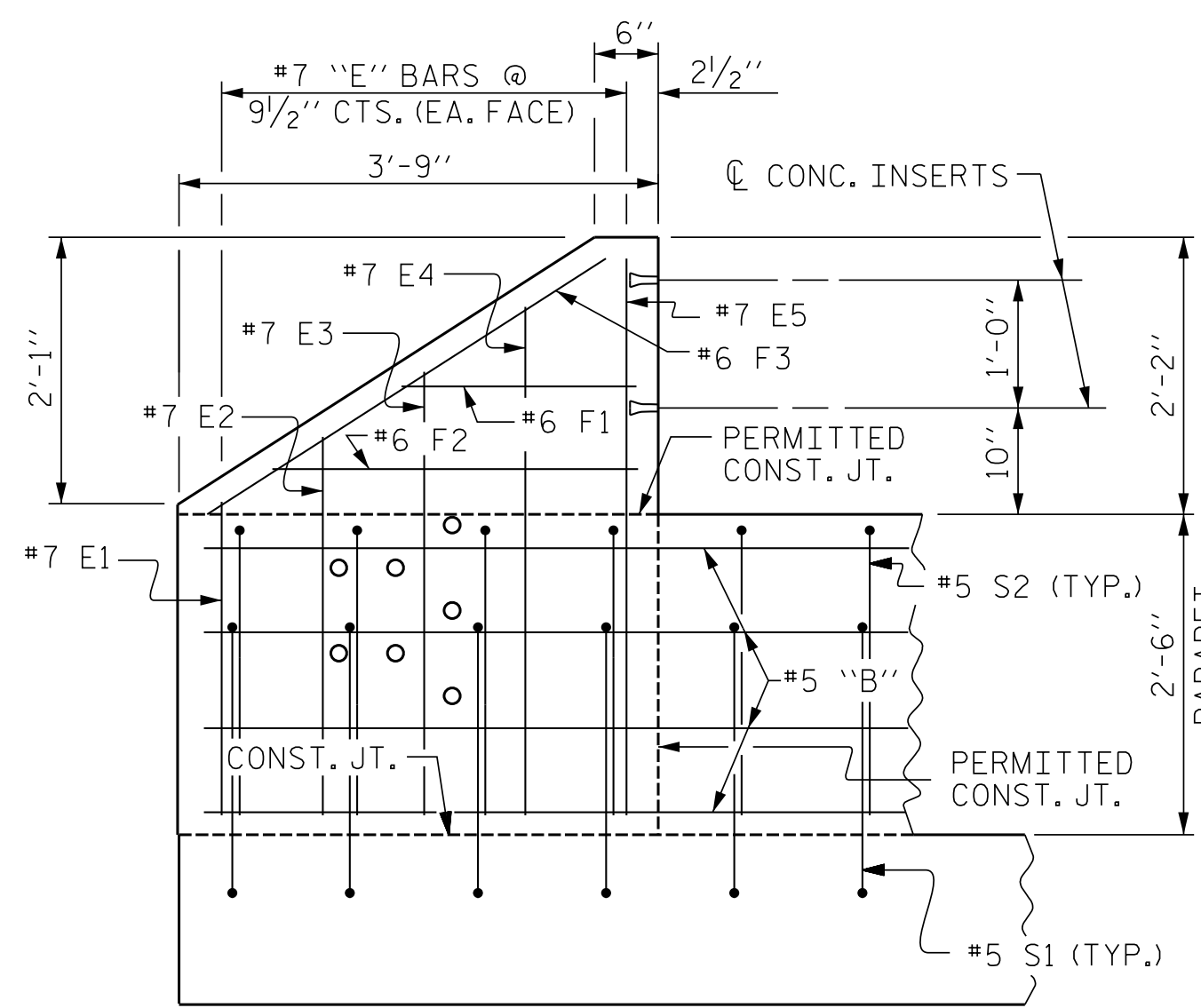
PLAN OF PARAPET



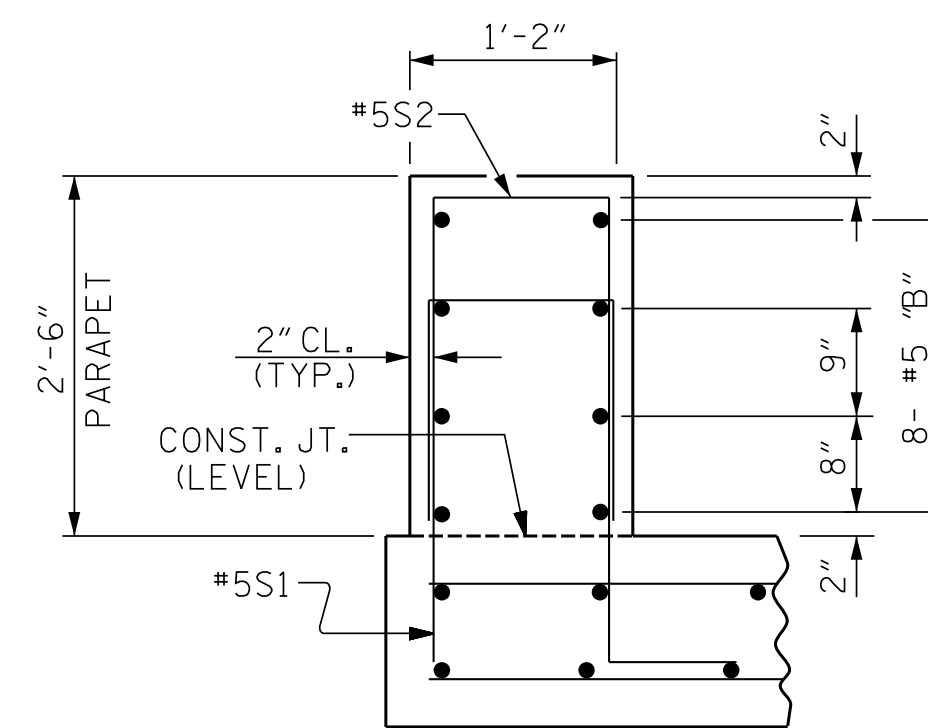
PLAN OF END POST



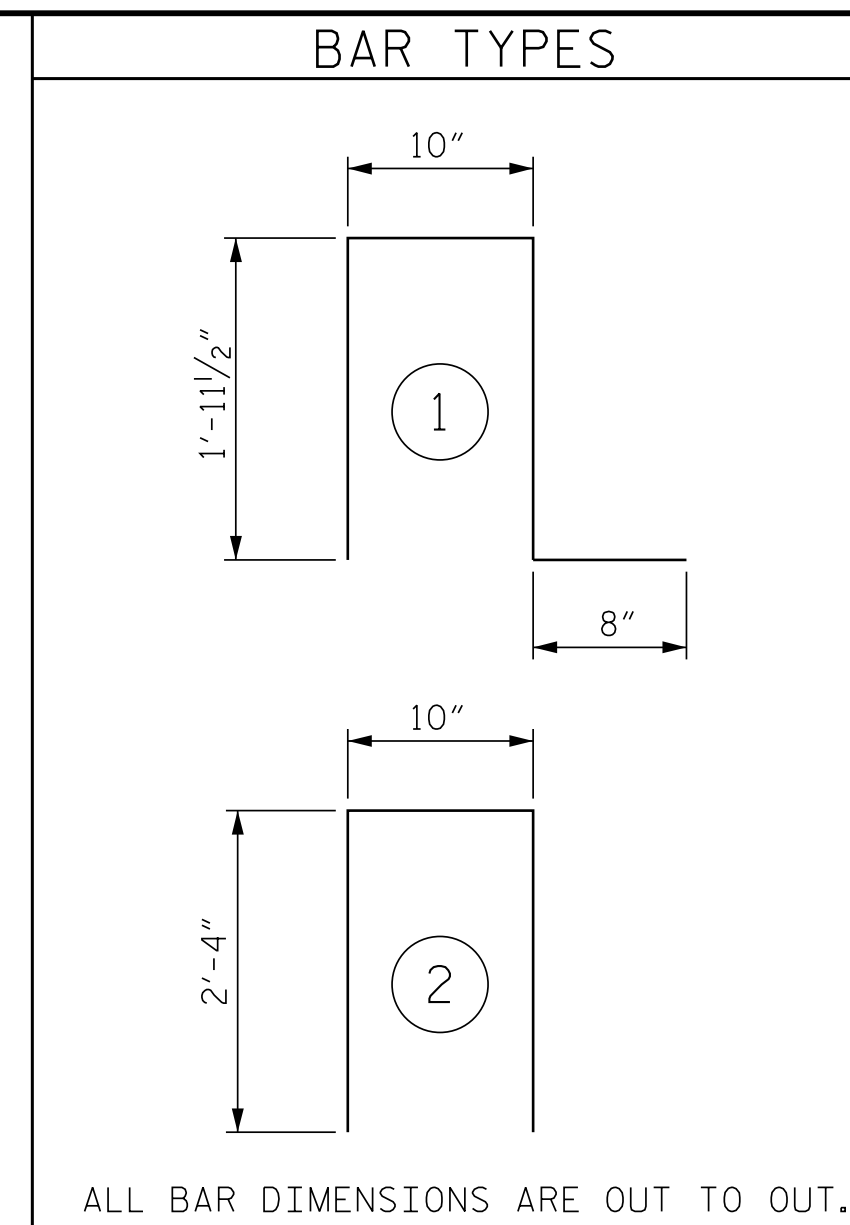
END VIEW



ELEVATION



SECTION THRU PARAPET



ALL BAR DIMENSIONS ARE OUT TO OUT.

| BILL OF MATERIAL | | | | | | |
|----------------------------------|-----|------|------|---------|-----------------|--|
| FOR 2 PARAPETS AND 4 END POSTS | | | | | | |
| BAR | NO. | SIZE | TYPE | LENGTH | WEIGHT | |
| * B1 | 64 | #5 | STR | 23'-2" | 1546 | |
| * B2 | 32 | #5 | STR | 21'-10" | 729 | |
| * B3 | 32 | #5 | STR | 25'-2" | 840 | |
| * B4 | 16 | #5 | STR | 23'-8" | 395 | |
| * E1 | 8 | #7 | STR | 2'-6" | 41 | |
| * E2 | 8 | #7 | STR | 3'-0" | 49 | |
| * E3 | 8 | #7 | STR | 3'-6" | 57 | |
| * E4 | 8 | #7 | STR | 4'-0" | 65 | |
| * E5 | 8 | #7 | STR | 4'-4" | 71 | |
| * F1 | 8 | #6 | STR | 1'-10" | 22 | |
| * F2 | 8 | #6 | STR | 3'-0" | 36 | |
| * F3 | 8 | #6 | STR | 3'-8" | 44 | |
| * S1 | 213 | #5 | 1 | 5'-5" | 1203 | |
| * S2 | 213 | #5 | 2 | 5'-6" | 1222 | |
| * EPOXY COATED REINFORCING STEEL | | | | | 6,320 LBS. | |
| CLASS AA CONCRETE | | | | | 46.9 CU. YDS. | |
| 1'-2" x 2'-6" CONCRETE PARAPET | | | | | 426.67 LIN. FT. | |

NOTES

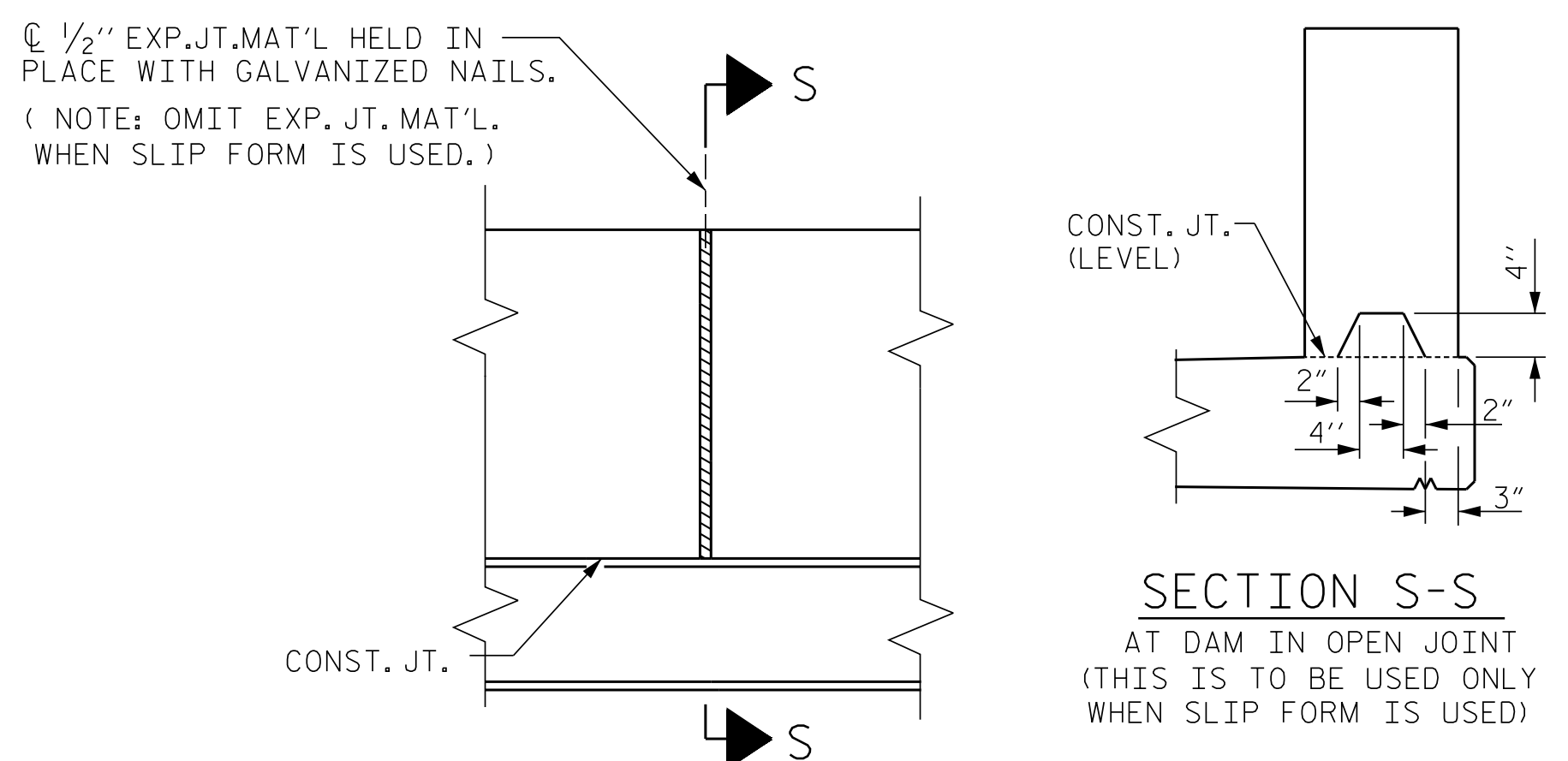
ALL REINFORCING STEEL IN PARAPETS AND END POSTS SHALL BE EPOXY COATED.

FOR DETAIL OF CONCRETE INSERT AND GUARDRAIL ANCHOR ASSEMBLY, SEE "RAIL POST SPACINGS AND END OF RAIL DETAIL" SHEET.

GROOVED CONTRACTION JOINTS, 1/2" IN DEPTH, SHALL BE TOOLED IN ALL EXPOSED FACES OF THE PARAPET AND IN ACCORDANCE WITH ARTICLE 825-10(B) OF THE STANDARD SPECIFICATIONS. A CONTRACTION JOINT SHALL BE LOCATED AT EACH THIRD POINT BETWEEN PARAPET EXPANSION JOINTS. ONLY ONE CONTRACTION JOINT IS REQUIRED AT MIDPOINT OF PARAPET SEGMENTS LESS THAN 20 FEET IN LENGTH AND NO CONTRACTION JOINTS ARE REQUIRED FOR THOSE SEGMENTS LESS THAN 10 FEET IN LENGTH.

PARAPET IN THE SPAN SHALL NOT BE CAST UNTIL ALL SLAB CONCRETE IN THE SPAN HAS BEEN CAST AND HAS REACHED A MINIMUM COMPRESSIVE STRENGTH OF 3,000 PSI.

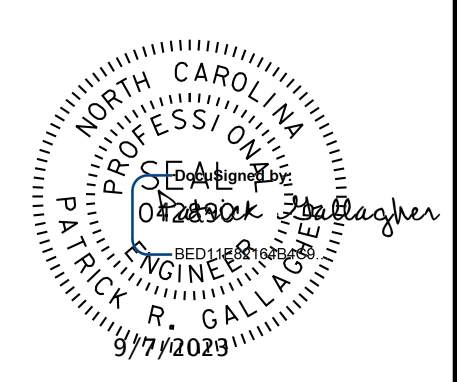
PARAPET AND END POST FOR TWO BAR RAIL



ELEVATION AT EXPANSION JOINTS

CONCRETE PARAPET DETAILS

PROJECT NO. B-4926
LENOIR COUNTY
STATION: 35+00.00 -L-
SHEET 2 OF 2



STATE OF NORTH CAROLINA
DEPARTMENT OF TRANSPORTATION
RALEIGH
SUPERSTRUCTURE
CONCRETE PARAPET
AND
END POST DETAILS

DOCUMENT NOT CONSIDERED FINAL
UNLESS ALL SIGNATURES COMPLETED
JMTC Johnson, Mirmiran, & Thompson Inc.
4700 Falls of Neuse Rd, Suite 100,
Raleigh, NC, 27609
License No: C-3097

| REVISIONS | | | | | | SHEET NO. |
|-----------|-----|-------|-----|-----|-------|--------------|
| NO. | BY: | DATE: | NO. | BY: | DATE: | S2-24 |
| 1 | | | 3 | | | TOTAL SHEETS |
| 2 | | | 4 | | | 39 |

W:\CADD\Structures\0317-01 - B-4926 Lenoir_20 & 3A Structures\Lenoir_3A\Drawings\02_D47_B4926_SKI_ZMPF5_S2.dgn
 DATE: 02/24/23 11:02:34 PM on Wednesday, September 06, 2023
 TIME:

DWN. BY: WDC DATE: 03/2023
 CHKD. BY: PRG DATE: 03/2023
 DES. EGR. OF RECORD: PRG DATE: 03/2023