

8/26/21

NOTES

AT ALL FIXED POINTS OF SUPPORT, NUTS FOR ANCHOR BOLTS ARE TO BE TIGHTENED FINGER TIGHT AND THEN BACKED OFF 1/2 TURN. THE THREAD OF THE NUT AND BOLT SHALL THEN BE BURRED WITH A SHARP POINTED TOOL.

STEEL SOLE PLATES, ANCHOR BOLTS, NUTS, AND WASHERS SHALL BE GALVANIZED IN ACCORDANCE WITH THE STANDARD SPECIFICATIONS.

PRIOR TO WELDING, GRIND THE GALVANIZED SURFACE OF THE PORTION OF THE EMBEDDED PLATE AND SOLE PLATE THAT ARE TO BE WELDED. AFTER WELDING, DAMAGED GALVANIZED SURFACES SHALL BE REPAIRED IN ACCORDANCE WITH THE STANDARD SPECIFICATIONS.

WHEN WELDING THE SOLE PLATE TO THE EMBEDDED PLATE IN THE GIRDER, USE TEMPERATURE INDICATING WAX PENS, OR OTHER SUITABLE MEANS, TO ENSURE THAT THE TEMPERATURE OF THE SOLE PLATE DOES NOT EXCEED 300°F. TEMPERATURES ABOVE THIS MAY DAMAGE THE ELASTOMER.

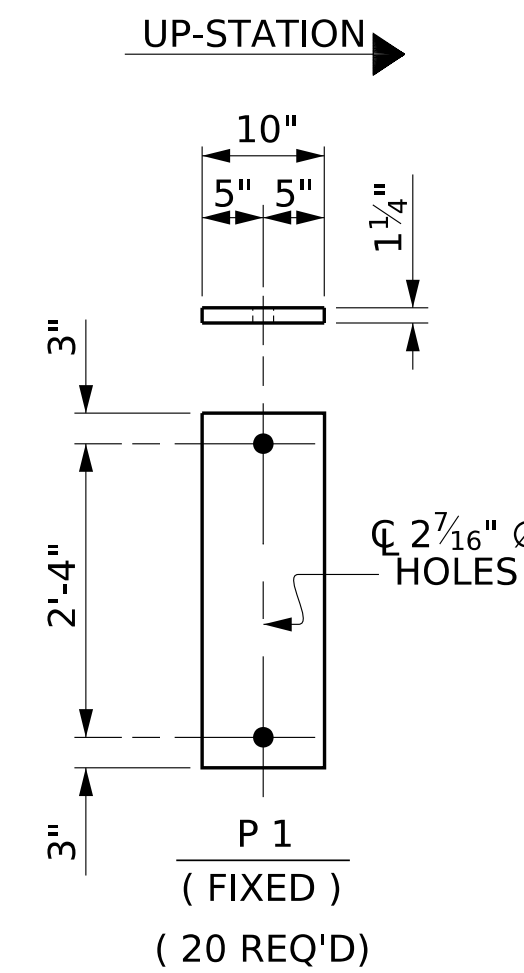
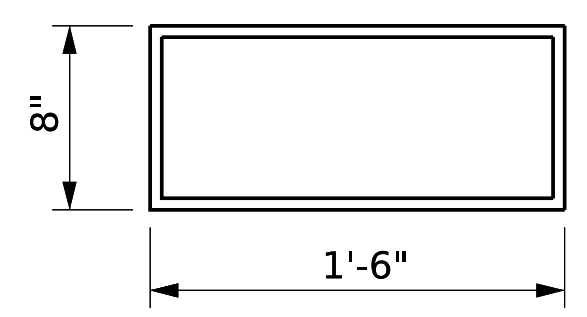
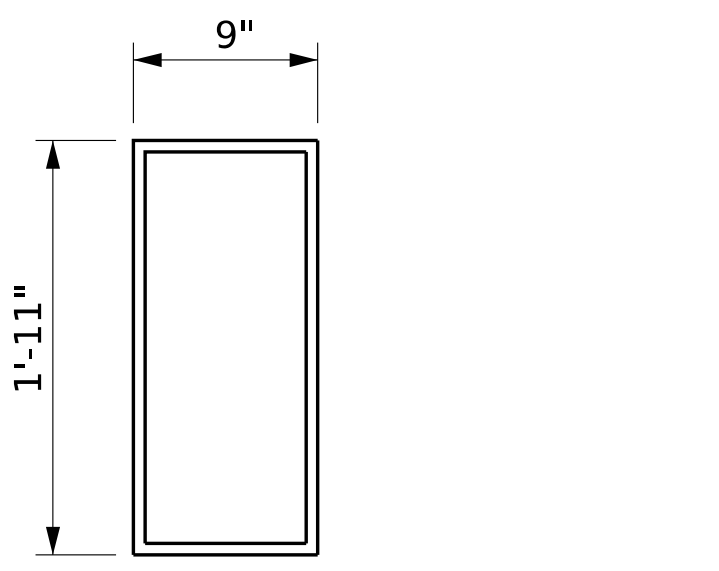
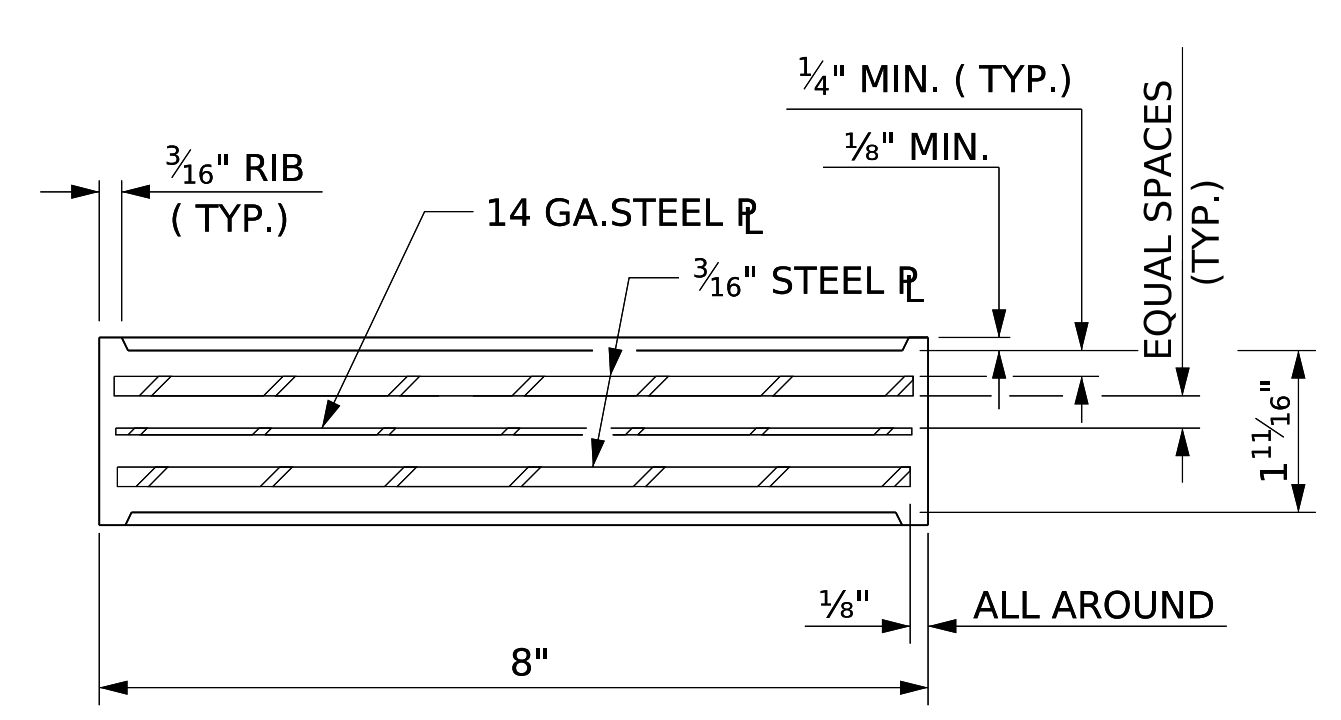
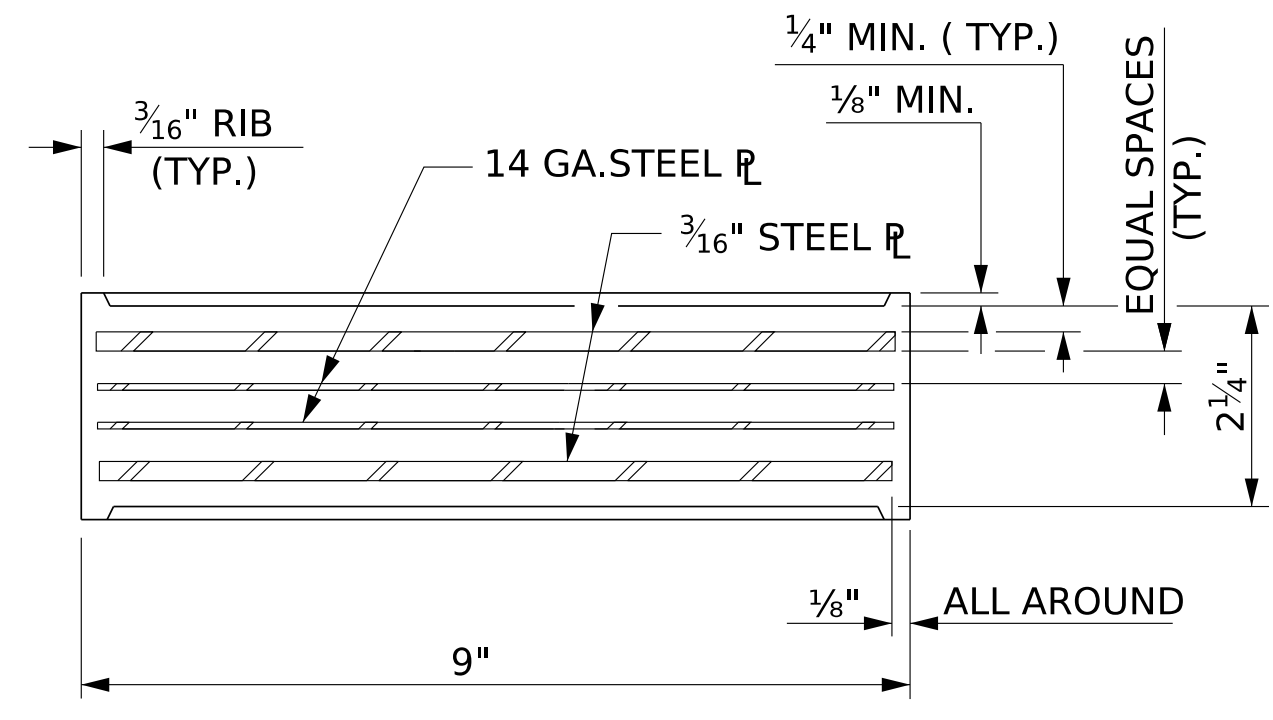
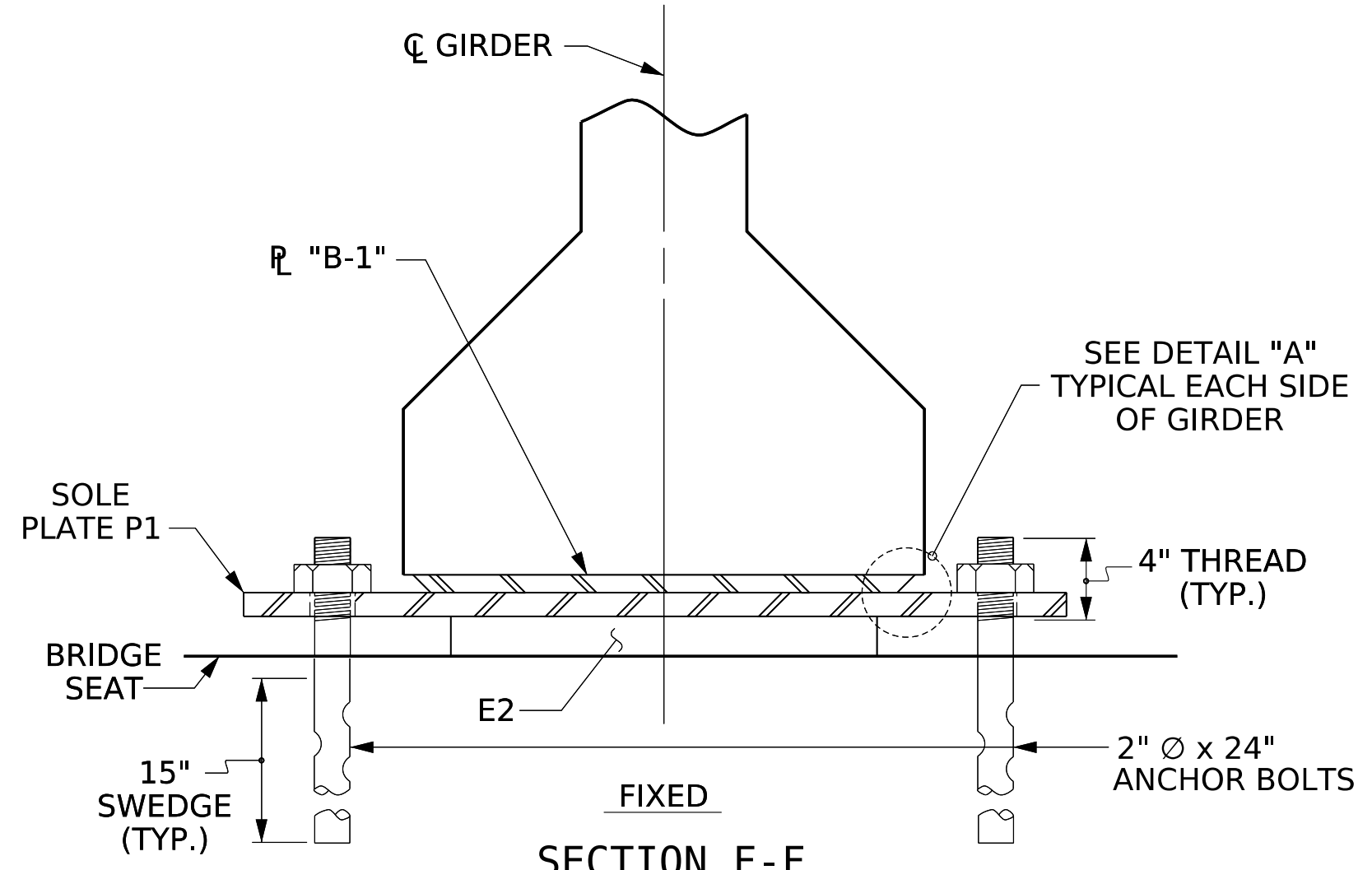
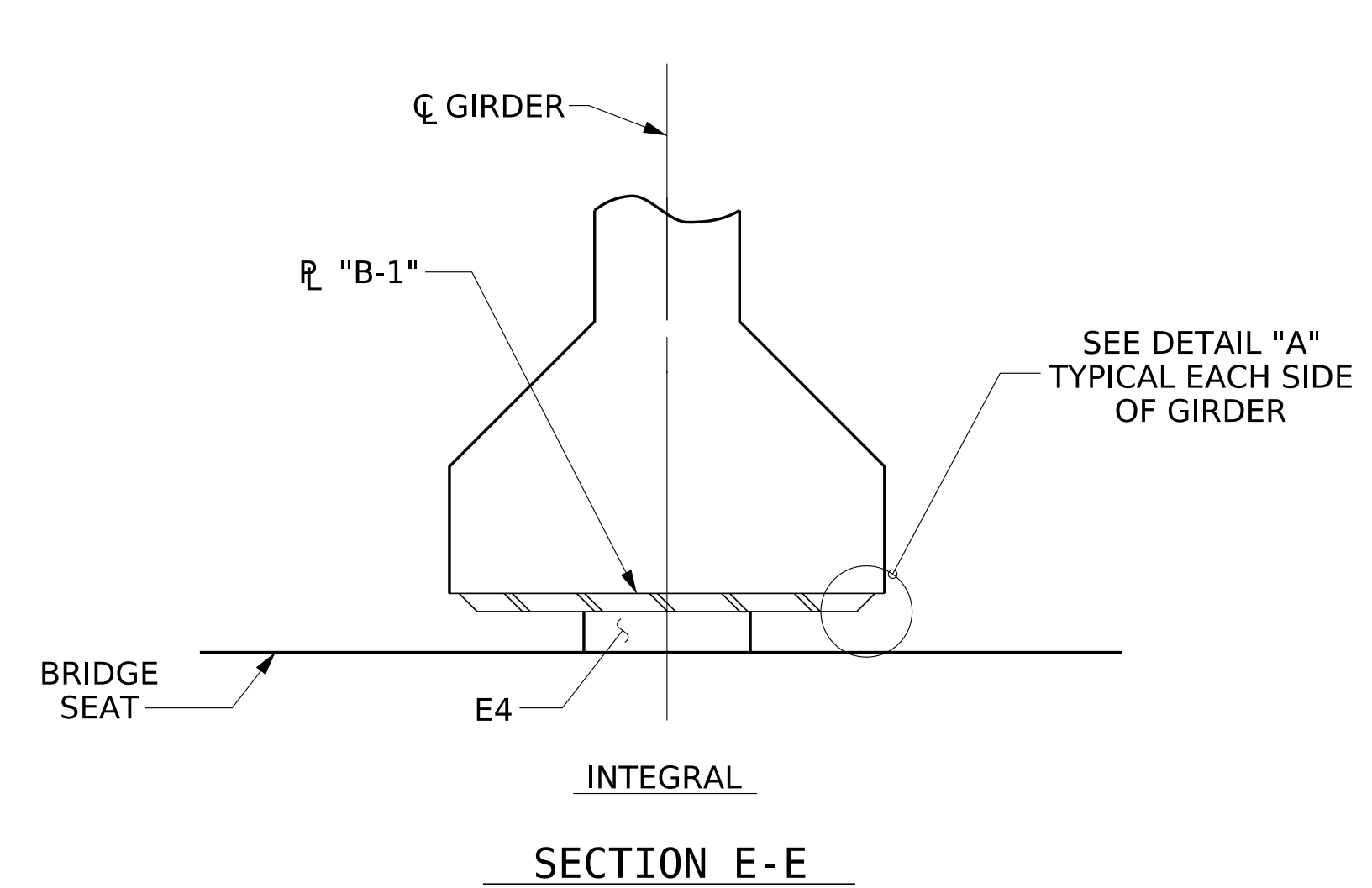
SOLE PLATE P1, BOLTS, NUTS, WASHERS, AND PIPE SLEEVE SHALL BE INCLUDED IN THE PAY ITEM FOR PRESTRESSED CONCRETE GIRDERS.

ANCHOR BOLTS SHALL MEET THE REQUIREMENTS OF ASTM A449. NUTS SHALL MEET THE REQUIREMENTS OF AASHTO M291-DH OR AASHTO M292-2H. WASHERS SHALL MEET THE REQUIREMENTS OF AASHTO M293. SHOP DRAWINGS ARE NOT REQUIRED FOR ANCHOR BOLT, NUTS AND WASHERS. SHOP INSPECTION IS REQUIRED.

ALL SURFACES OF BEARING PLATES SHALL BE SMOOTH AND STRAIGHT.

THE ELASTOMER IN THE STEEL REINFORCED BEARINGS SHALL HAVE A SHEAR MODULUS OF 0.160 KSI, IN ACCORDANCE WITH AASHTO M251.

ALL SOLE PLATES SHALL BE AASHTO M270 GRADE 36.



MAXIMUM ALLOWABLE SERVICE LOADS	
D.L.+L.L. (NO IMPACT)	
TYPE III	205 k
TYPE V	365 k

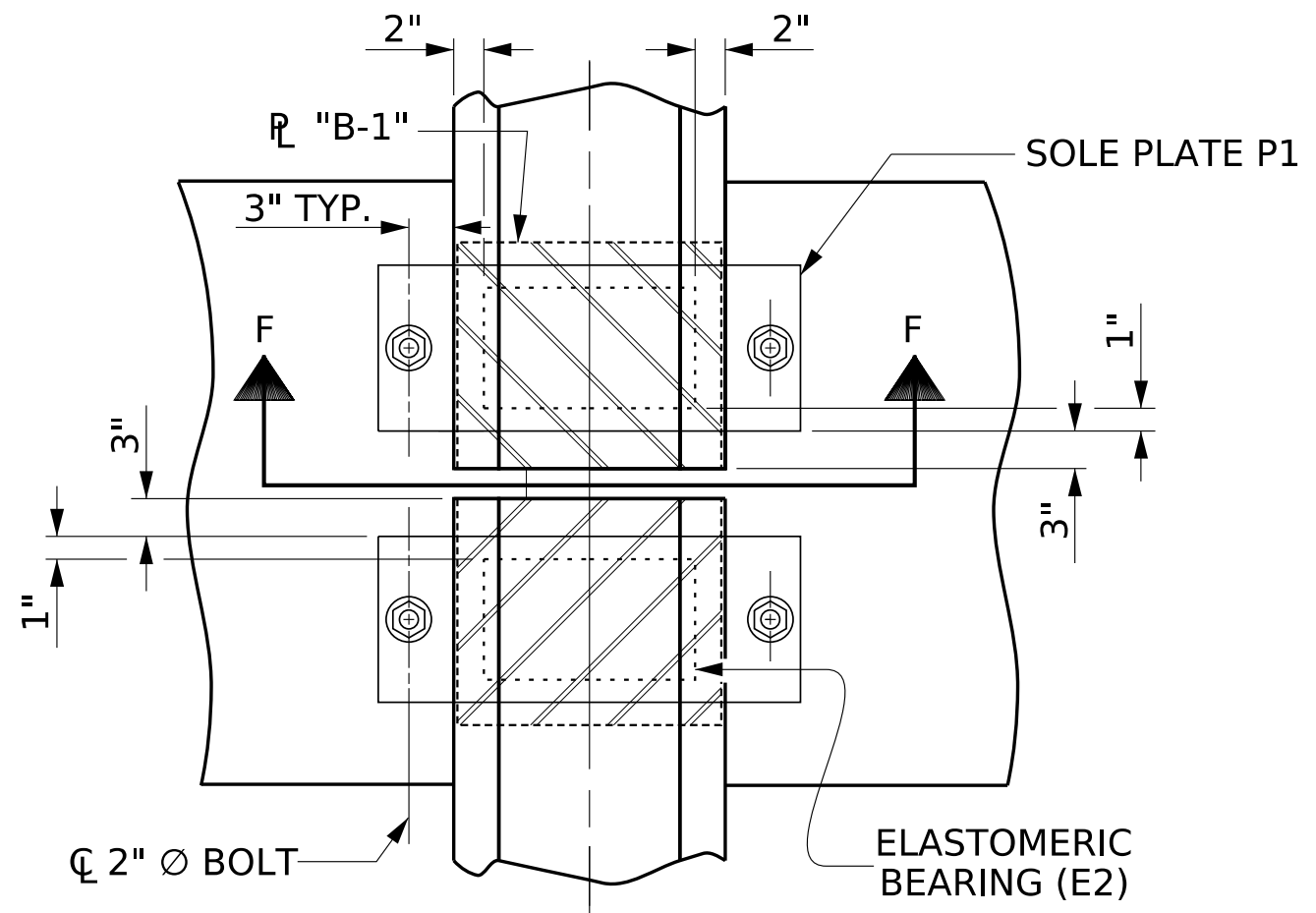
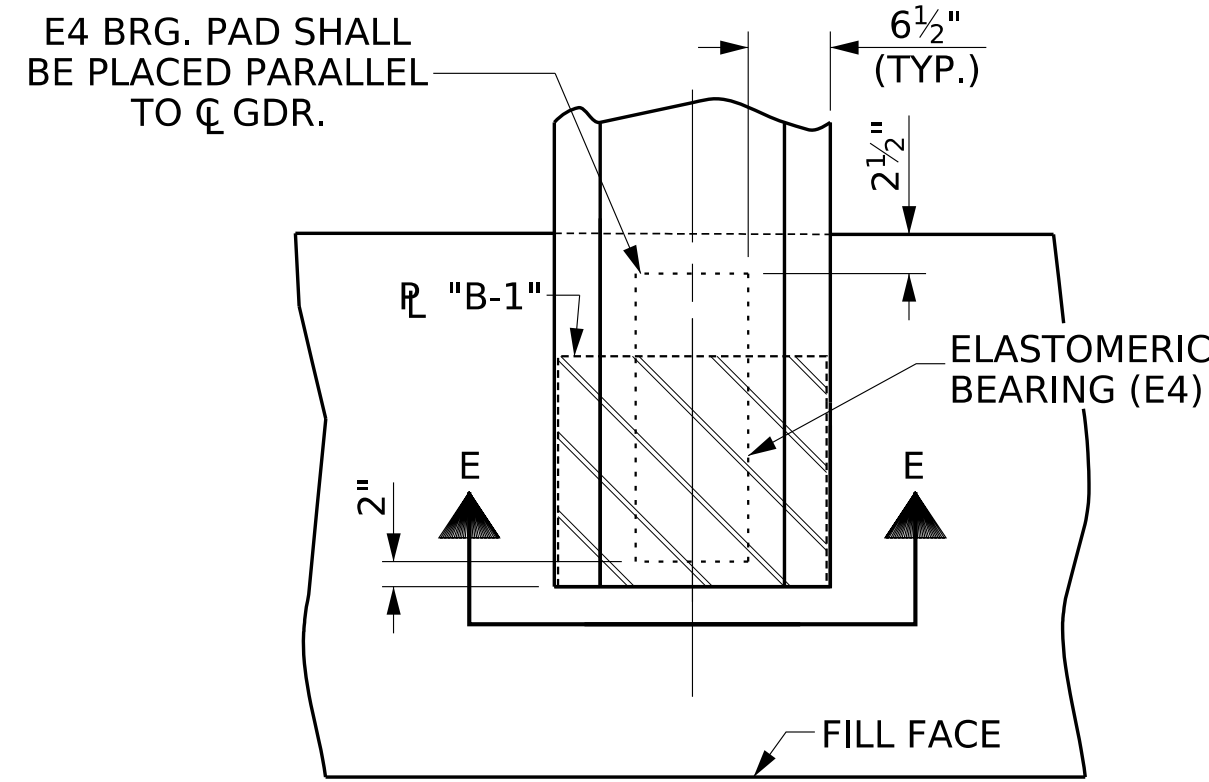
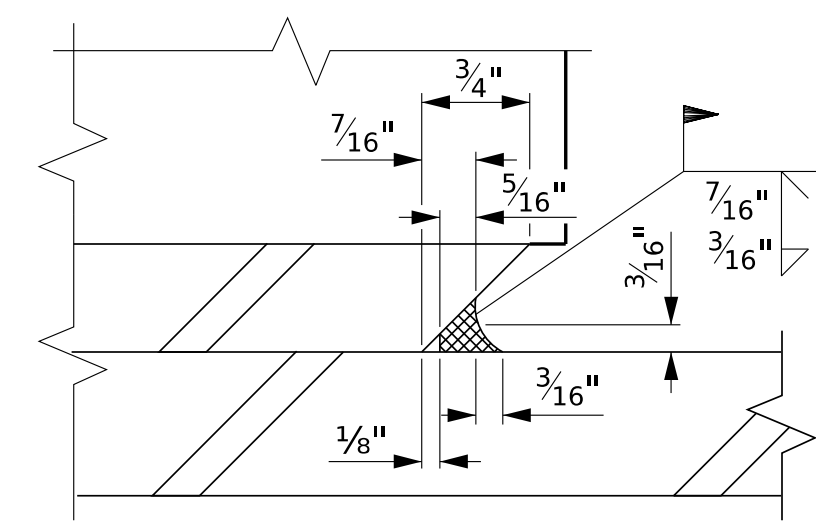
E4 (10 REQ'D)
PLAN VIEW OF ELASTOMERIC BEARING

E2 (20 REQ'D)
PLAN VIEW OF ELASTOMERIC BEARING

SOLE PLATE DETAILS (P1)
(AT BENTS)

TYPE V
(AT END BENTS)

TYPE III
(AT BENTS)

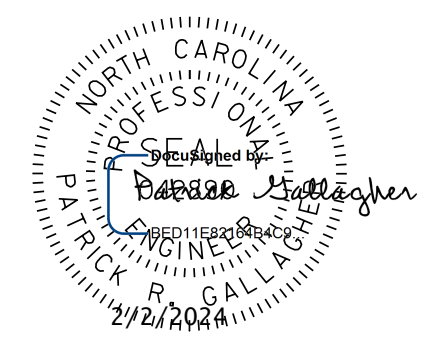


DETAIL "A"

PLAN VIEW AT END BENTS

PLAN VIEW AT BENTS

PROJECT NO. B-4926
LENOIR COUNTY
STATION: 35+00.00 -L-



STATE OF NORTH CAROLINA
DEPARTMENT OF TRANSPORTATION
RALEIGH

STANDARD ELASTOMERIC BEARING DETAILS

PRESTRESSED CONCRETE GIRDER SUPERSTRUCTURE

DOCUMENT NOT CONSIDERED FINAL UNLESS ALL SIGNATURES COMPLETED

JMT Johnson, Mirmiran, & Thompson Inc.
4700 Falls of Neuse Rd, Suite 100,
Raleigh, NC, 27609
License No: C-3097

REVISIONS						SHEET NO.
NO.	BY:	DATE:	NO.	BY:	DATE:	S2-19
1			3			TOTAL SHEETS 39
2			4			

W:\CADD\Structures\031717-01 - B-4926 Lenoir_20 & 3A Structures\Lenoir_3A\Plans\402_03T_B4926_SML_BROJ_S19.dgn
 DATE: 07/27/21 TIME: 07:47

DWN. BY: WDC	DATE: 03/2023	DRAWN BY: WJH	8/89	REV. 12/17	MAA/THC
CHKD. BY: PRG	DATE: 03/2023	CHECKED BY: CRK	8/89	REV. 10/21	BNB/AAI
DES. EGR. OF RECORD: PRG	DATE: 03/2023			REV. 10/23	BNB/SNM