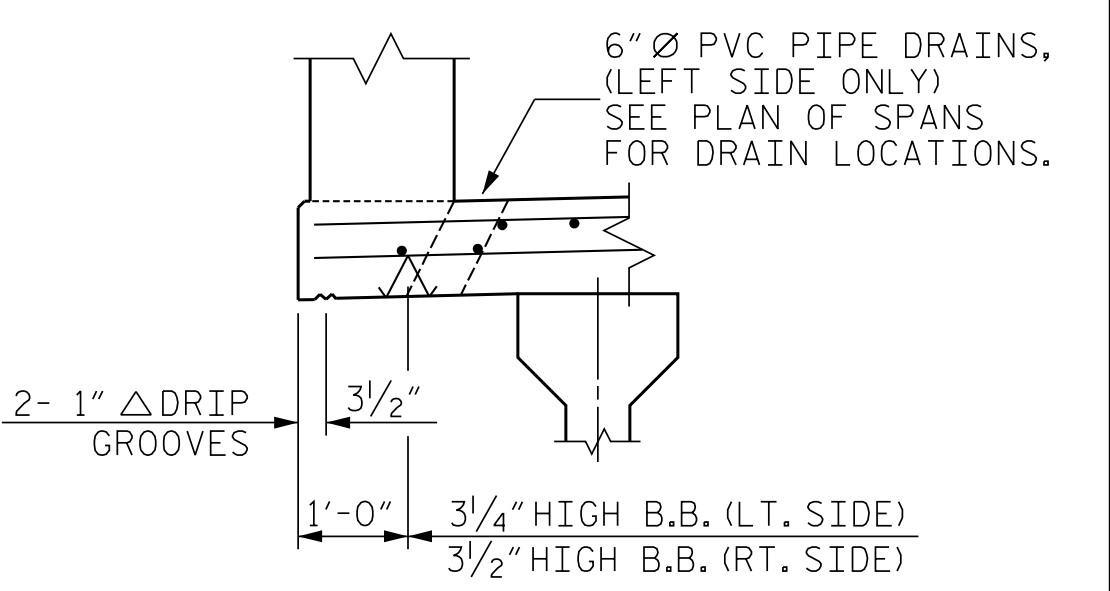


**TYPICAL SECTION AT INTEGRAL END BENT DIAPHRAGM**

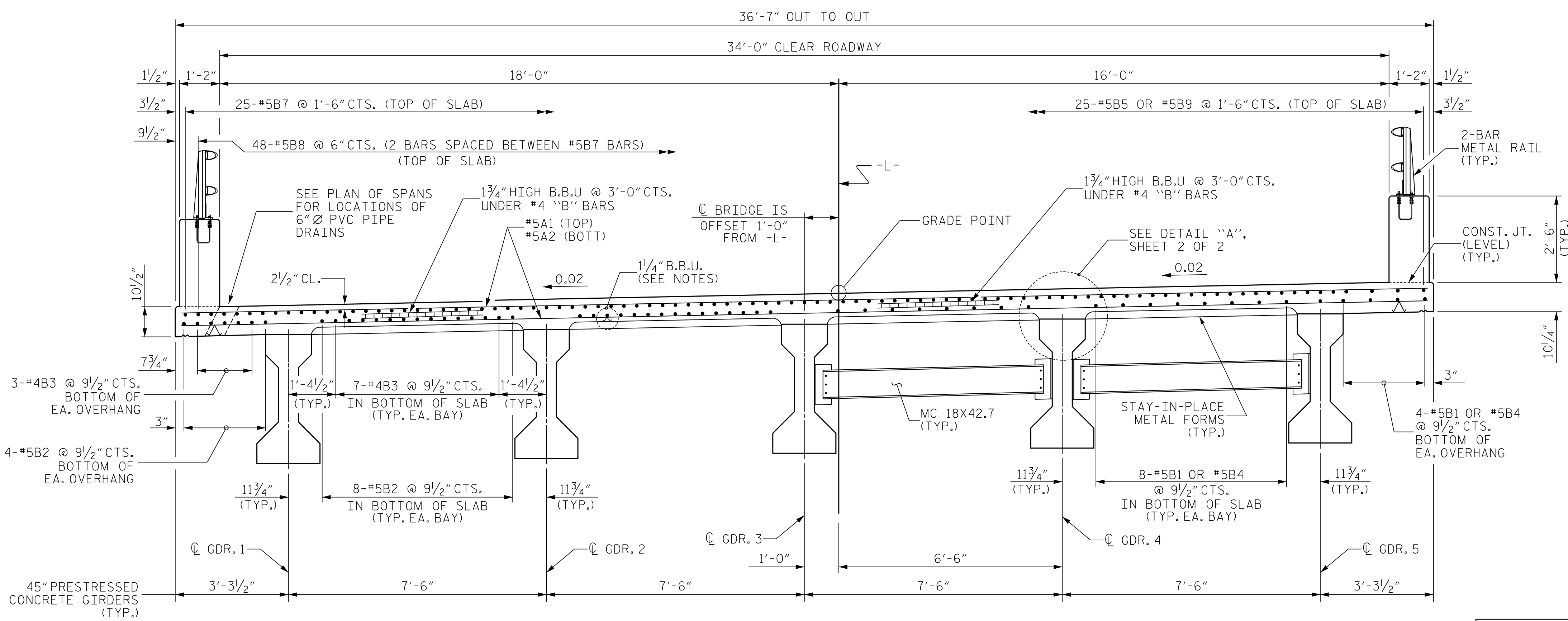
SHOWING ABUTMENT WALL AT FILL FACE OF END BENTS, WINGS NOT SHOWN FOR CLARITY.

**NOTES**  
 PROVIDE 1 1/4" HIGH BEAM BOLSTERS UPPER AT 4'-0" CTS. ATOP THE METAL STAY-IN-PLACE FORMS TO SUPPORT THE BOTTOM MAT OF "A" BARS. WHEN USING REMOVABLE FORMS, PROVIDE CONTINUOUS HIGH CHAIRS FOR METAL DECK (C.H.C.M.) @ 4'-0" CTS. WITH A HEIGHT TO SUPPORT THE BOTTOM MAT OF "A" BARS A CLEAR DISTANCE OF 2 1/2" ABOVE THE TOP OF THE REMOVABLE FORM.  
 LONGITUDINAL STEEL MAY BE SHIFTED SLIGHTLY, AS NECESSARY, TO AVOID INTERFERENCE WITH STIRRUPS IN PRESTRESSED CONCRETE GIRDERS.  
 PREVIOUSLY CAST CONCRETE IN A CONTINUOUS UNIT SHALL HAVE ATTAINED A MINIMUM COMPRESSIVE STRENGTH OF 3,000 PSI BEFORE ADDITIONAL CONCRETE IS CAST IN THE UNIT.  
 METAL STAY-IN-PLACE FORMS SHALL NOT BE WELDED TO THE SUPPORT ANGLES WITHIN THE LINK SLAB AREAS. SEE "PLAN OF SPAN" SHEETS FOR LOCATION.



**OVERHANG DETAIL**

(LEFT SIDE SHOWN, RIGHT SIDE SIMIAR)

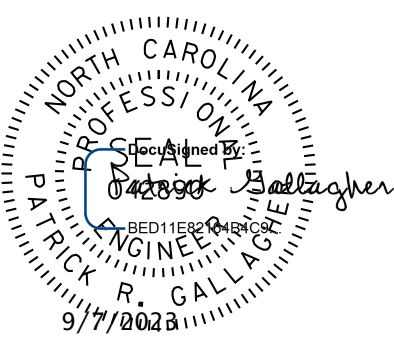


**TYPICAL HALF-SECTION LINK SLAB AT BENT**

**TYPICAL HALF-SECTION AT INTERMEDIATE DIAPHRAGM**

**TYPICAL SECTION**

PROJECT NO. B-4926  
LENOIR COUNTY  
 STATION: 35+00.00 -L-  
 SHEET 1 OF 2



STATE OF NORTH CAROLINA  
 DEPARTMENT OF TRANSPORTATION  
 RALEIGH  
 SUPERSTRUCTURE  
 TYPICAL SECTION

**DOCUMENT NOT CONSIDERED FINAL UNLESS ALL SIGNATURES COMPLETED**

**JMT** Johnson, Mirmiran, & Thompson Inc.  
 4700 Falls of Neuse Rd, Suite 100,  
 Raleigh, NC, 27609  
 License No: C-3097

REVISIONS						SHEET NO.	
NO.	BY:	DATE:	NO.	BY:	DATE:	S2-7	
1			3			TOTAL SHEETS	
2			4			39	

DWG: JMT/Structures/0317-01 - B-4926 Lenoir 20 & 3A Structures/Lenoir 3A/Plans/402\_01\_L\_B4926-SM/L\_T501\_S07.dgn  
 DATE: 02/24 PM on Wednesday, September 06, 2023  
 TIME:

DWN. BY: WDC DATE: 03/2023  
 CHKD. BY: PRG DATE: 03/2023  
 DES. EGR. OF RECORD: PRG DATE: 03/2023