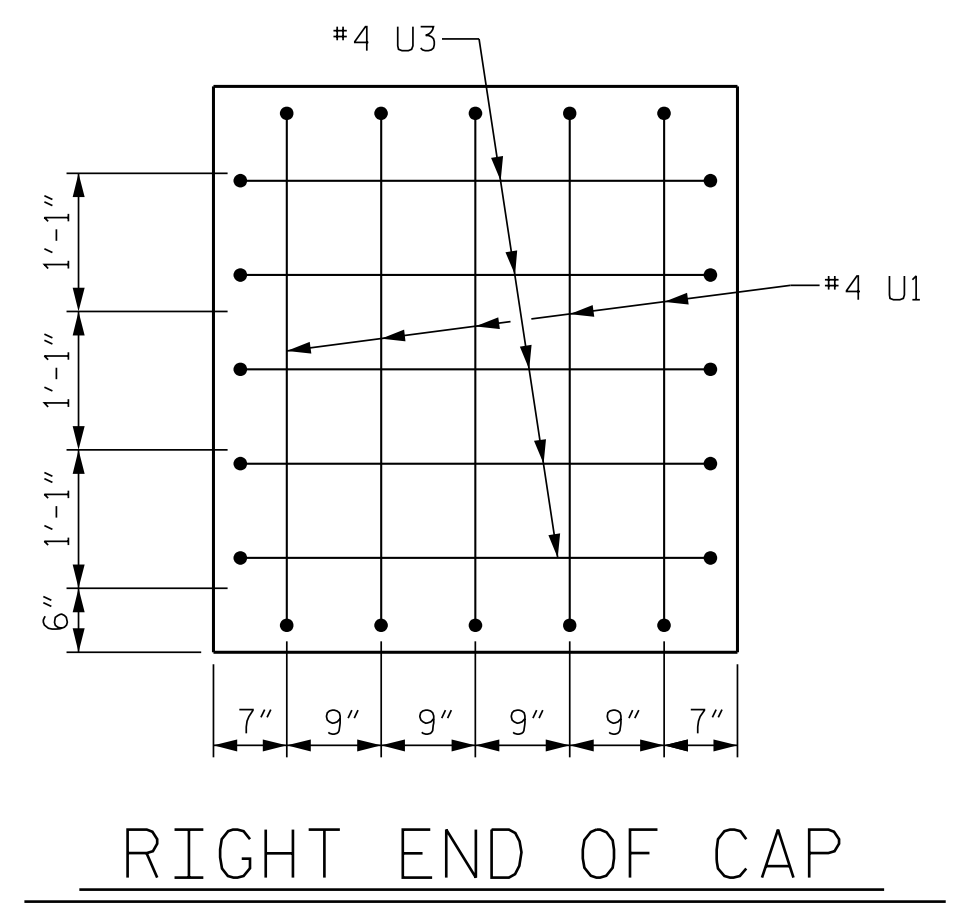
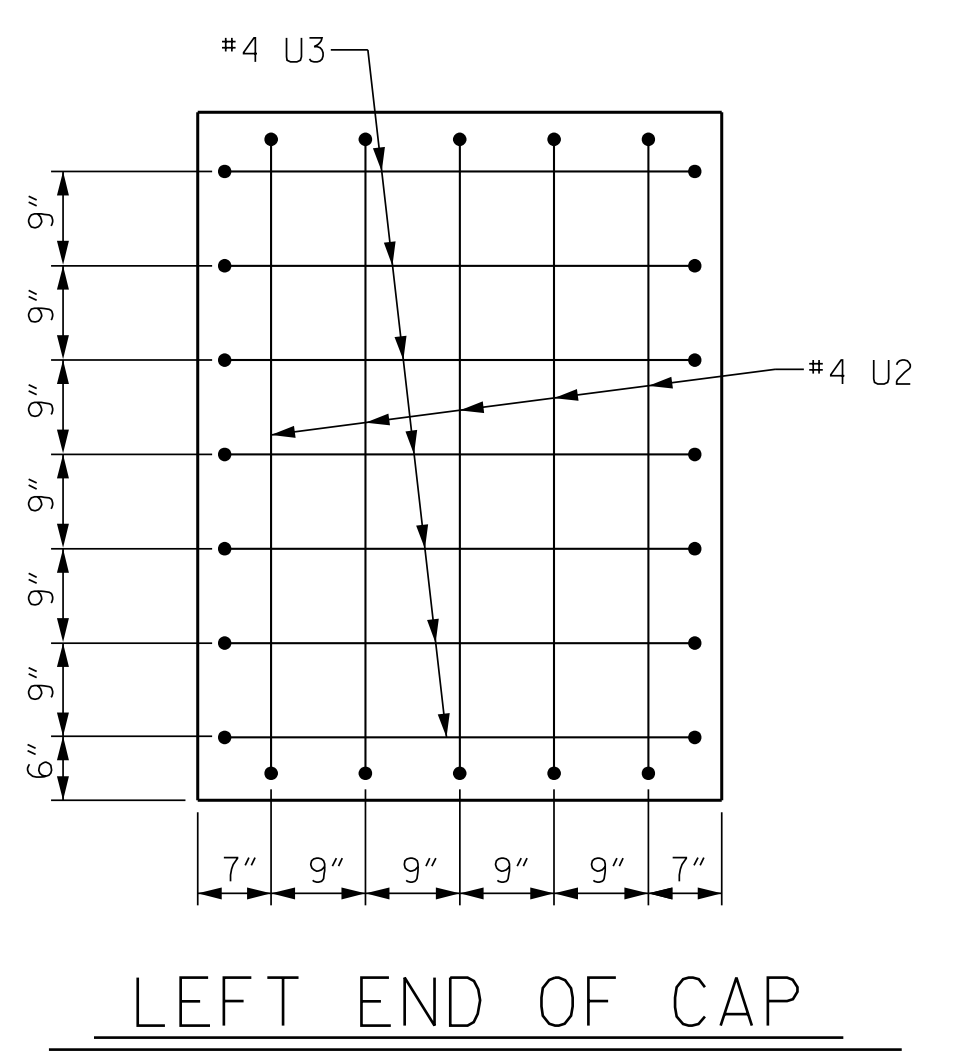
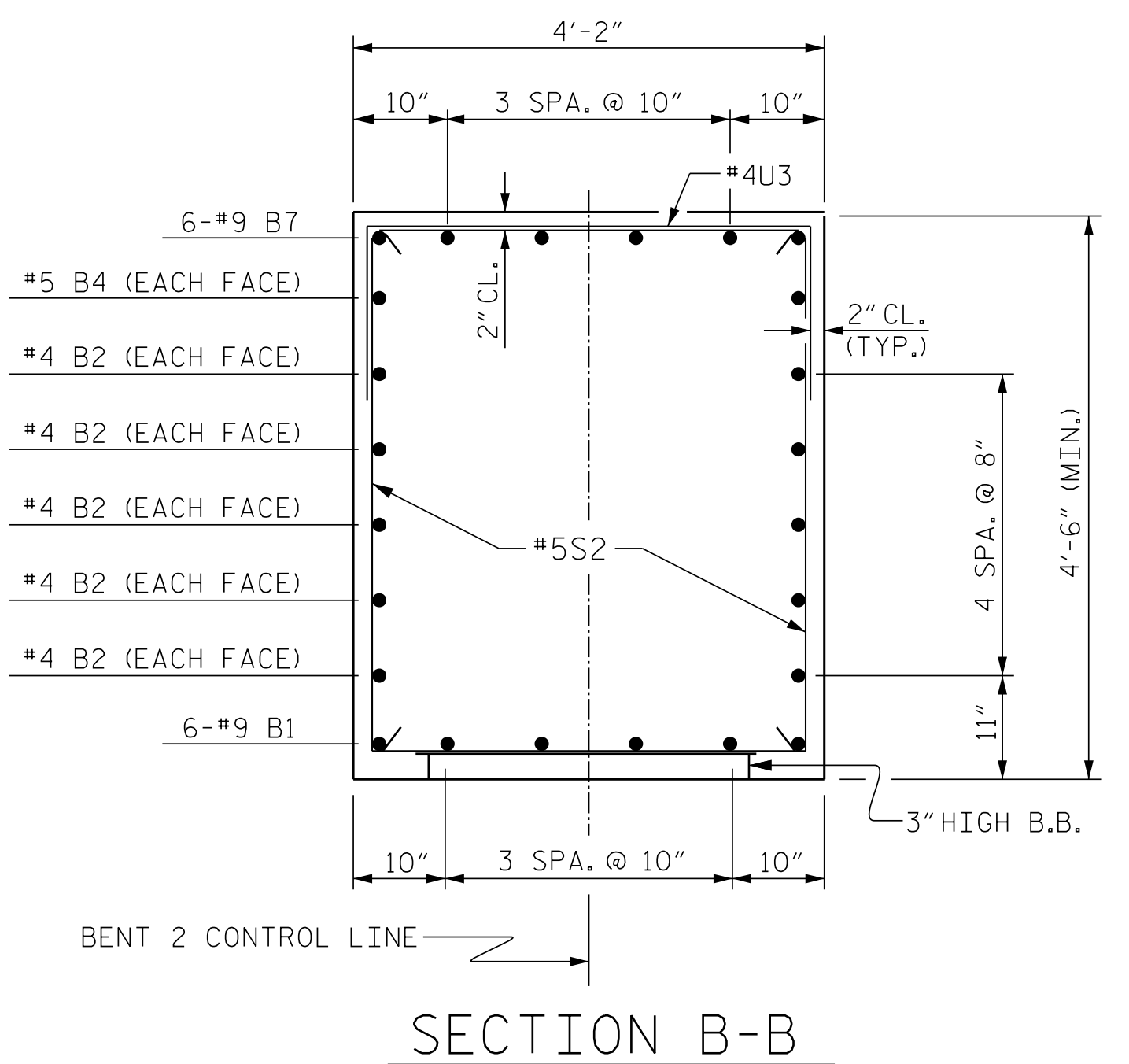
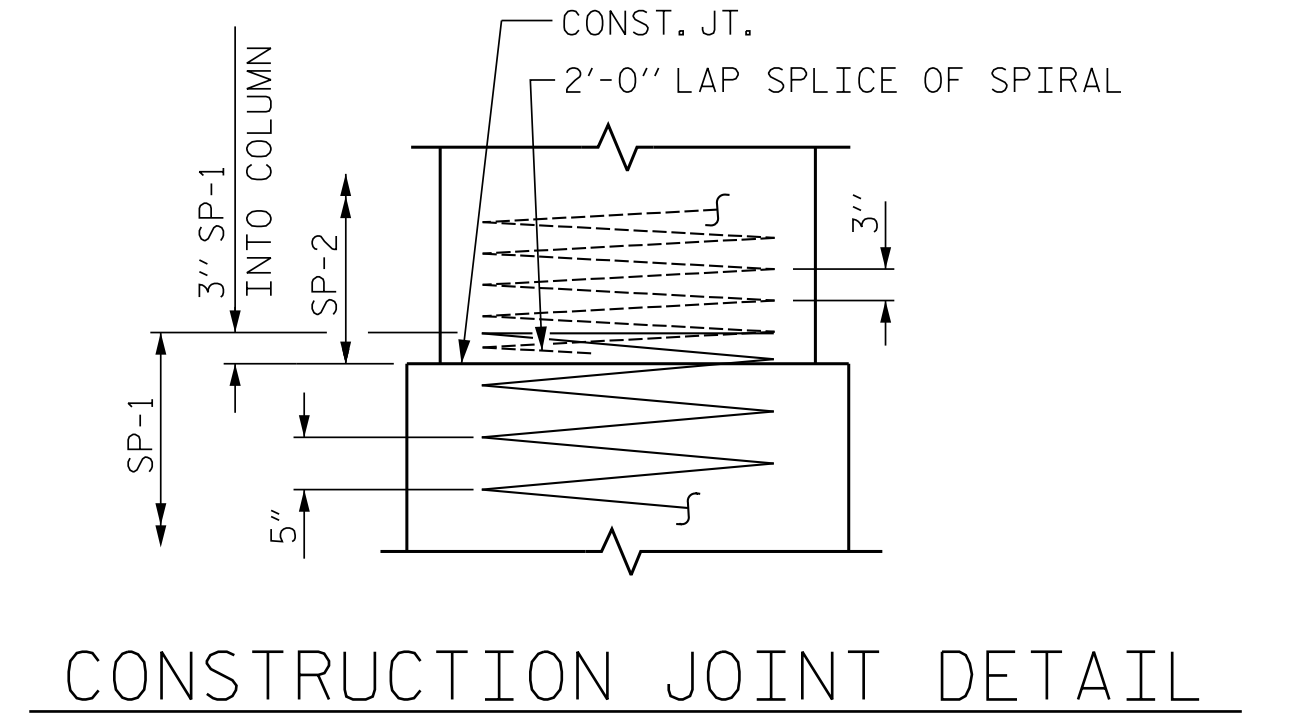
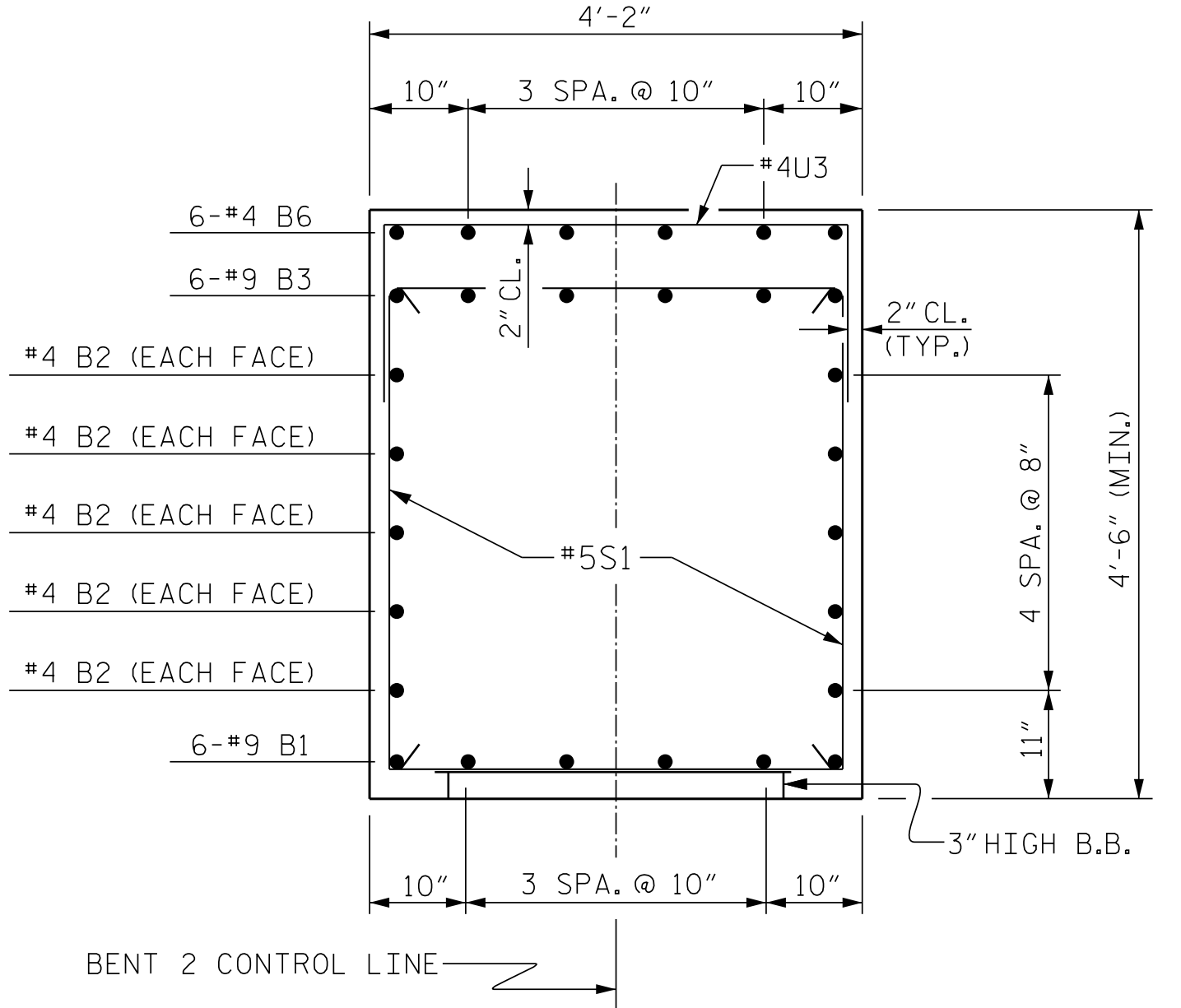
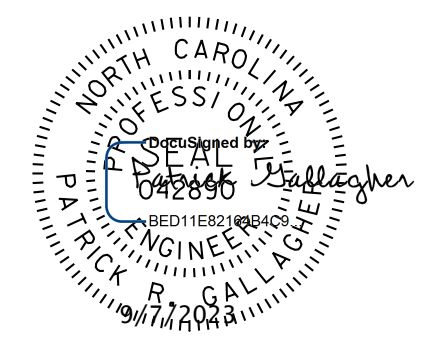


BILL OF MATERIAL					
BENT NO. 2					
BAR	NO.	SIZE	TYPE	LENGTH	WEIGHT
B1	6	#9	STR	34'-6"	704
B2	10	#4	STR	34'-6"	230
B3	6	#9	1	29'-4"	598
B4	2	#4	STR	8'-10"	12
B5	2	#4	STR	3'-10"	5
B6	6	#4	STR	10'-6"	42
B7	6	#9	1	12'-11"	263
M1	96	#11	STR	43'-1"	21,975
S1	27	#5	2	13'-0"	366
S2	19	#5	2	14'-4"	284
U1	5	#4	3	7'-1"	24
U2	5	#4	3	8'-0"	27
U3	47	#4	3	6'-10"	215
V1	48	#9	1	19'-6"	3182
REINFORCING STEEL					28,182 LBS.
SP-1	3	**	4	1759'-0"	5504
SP-2	3	*	5	677'-8"	1358
SPIRAL COLUMN REINFORCING STEEL					6,862 LBS.
** THE SP-1 SPIRAL REINFORCING STEEL SHALL BE W31 OR D-31 COLD DRAWN WIRE OR #5 PLAIN OR DEFORMED BAR					
* THE SP-2 SPIRAL REINFORCING STEEL SHALL BE W20 OR D-20 COLD DRAWN WIRE OR #4 PLAIN OR DEFORMED BAR					
CLASS A CONCRETE BREAKDOWN					
POUR #2 (COLUMNS)					17.7 C.Y.
POUR #3 (CAP)					26.4 C.Y.
TOTAL CLASS A CONCRETE					44.1 C.Y.
DRILLED PIERS:					
DRILLED PIER CONCRETE POUR #1 (DRILLED PIERS)					104.0 C.Y.



PROJECT NO. B-4926  
 LENOIR COUNTY  
 STATION: 25+45.00 -L-  
 SHEET 2 OF 2



STATE OF NORTH CAROLINA  
 DEPARTMENT OF TRANSPORTATION  
 RALEIGH  
 SUBSTRUCTURE  
 BENT NO. 2

DOCUMENT NOT CONSIDERED FINAL  
 UNLESS ALL SIGNATURES COMPLETED

**JMT** Johnson, Mirmiran, & Thompson Inc.  
 4700 Falls of Neuse Rd, Suite 100,  
 Raleigh, NC, 27609  
 License No: C-3097

REVISIONS					
NO.	BY:	DATE:	NO.	BY:	DATE:
1			3		
2			4		

SHEET NO. S1-37  
 TOTAL SHEETS 49

DWG: JMT\Structures\0317-01 - B-4926 Lenoir\_20 - 834\Structures\Lenoir\_20\Drawings\07\_L\_B4926-SMU\_B202\_037.dgn  
 DATE: 03/23 PM on Wednesday, September 06, 2023

DWN. BY: WDC DATE: 03/2023  
 CHKD. BY: PRG DATE: 03/2023  
 DES. EGR. OF RECORD: PRG DATE: 03/2023