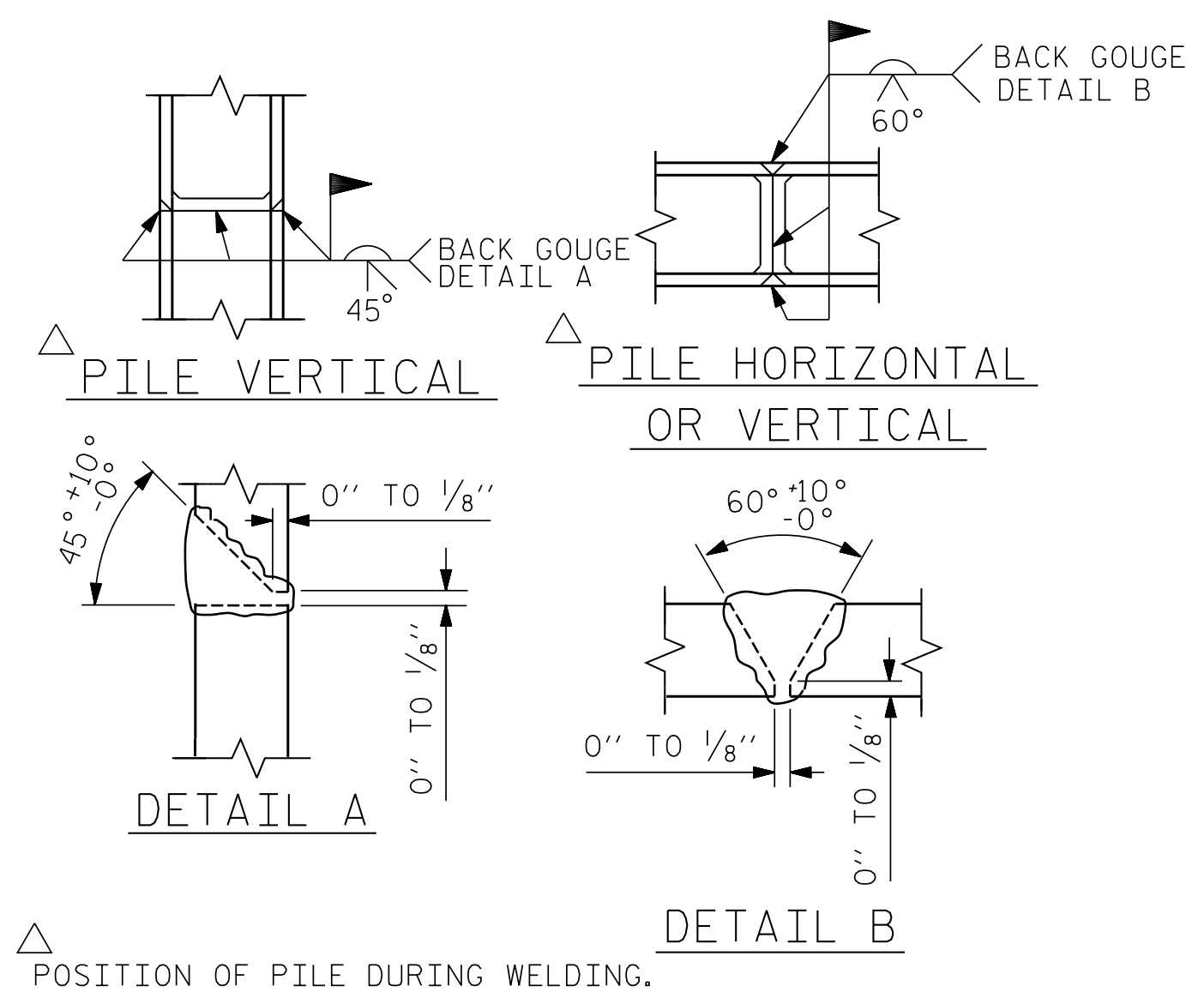


BAGGED STONE AND PIPE SHALL BE PLACED IMMEDIATELY AFTER COMPLETION OF END BENT EXCAVATION. PIPE MAY BE EITHER CONCRETE, CORRUGATED STEEL, CORRUGATED ALUMINUM ALLOY, OR CORRUGATED PLASTIC. PERFORATED PIPE WILL NOT BE ALLOWED.

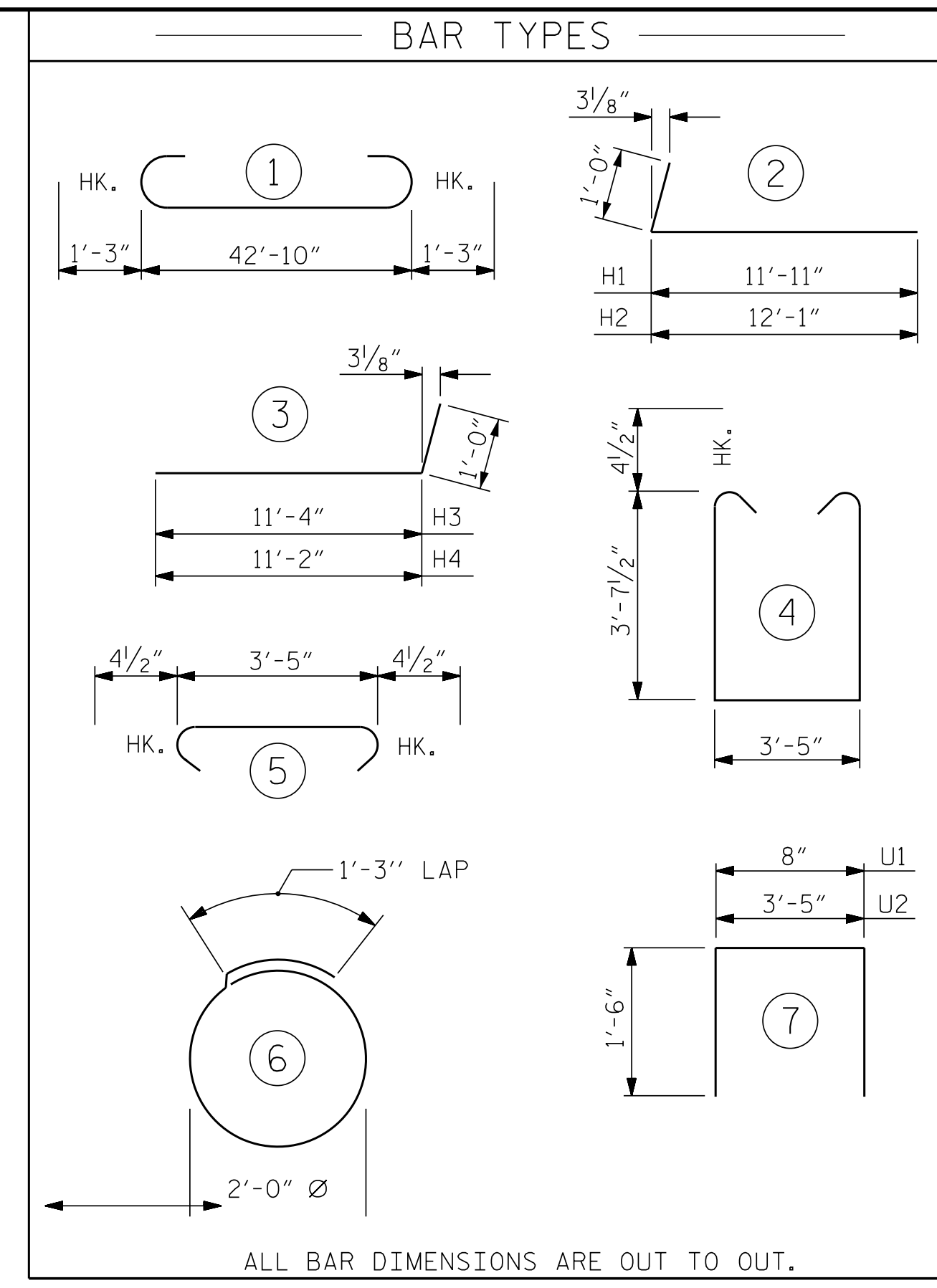
BAGGED STONE SHALL REMAIN IN PLACE UNTIL THE ENGINEER DIRECTS THAT IT BE REMOVED. THE CONTRACTOR SHALL REMOVE AND DISPOSE OF SILT ACCUMULATIONS AT BAGGED STONE WHEN SO DIRECTED BY THE ENGINEER. BAGS SHALL BE REMOVED AND REPLACED WHENEVER THE ENGINEER DETERMINES THAT THEY HAVE DETERIORATED AND LOST THEIR EFFECTIVENESS.

NO SEPARATE PAYMENT WILL BE MADE FOR THIS WORK AND THE ENTIRE COST OF THIS WORK SHALL BE INCLUDED IN THE UNIT CONTRACT PRICE BID FOR THE SEVERAL PAY ITEMS.

### TEMPORARY DRAINAGE AT END BENT



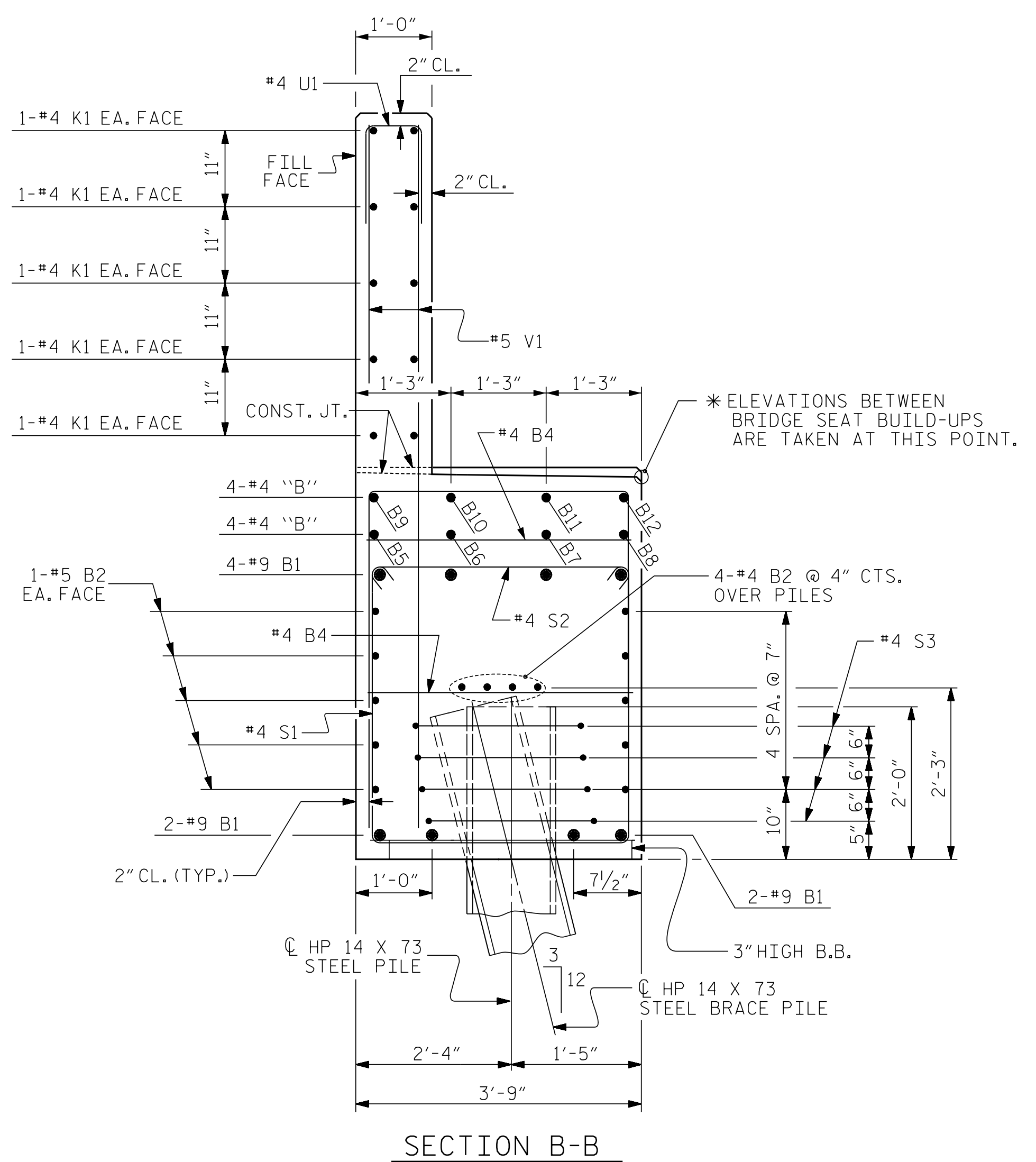
### PILE SPLICE DETAILS



ALL BAR DIMENSIONS ARE OUT TO OUT.

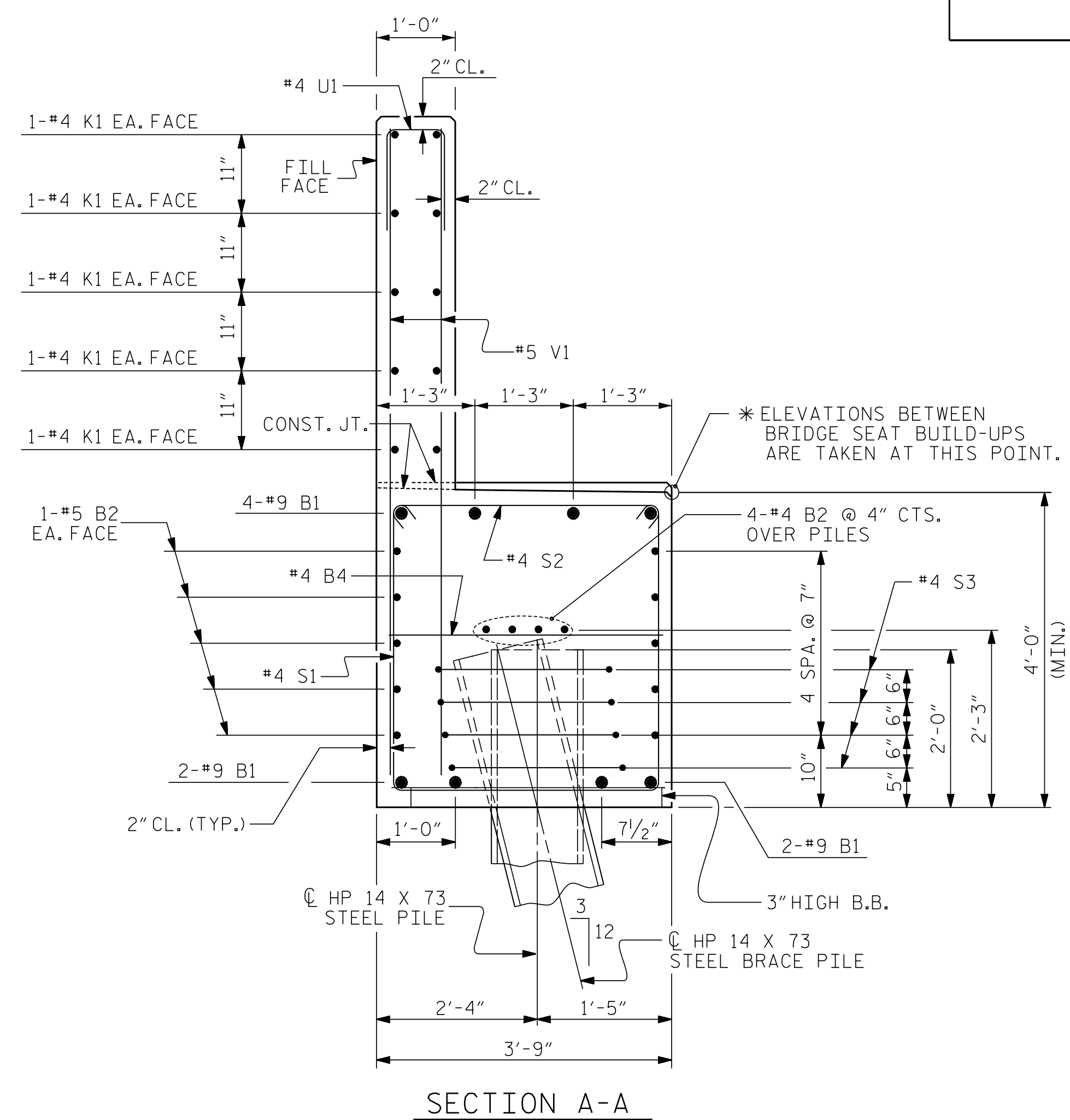
BILL OF MATERIAL					
END BENT NO. 1					
BAR NO.	SIZE	TYPE	LENGTH	WEIGHT	
B1	#8		45'-4"	1233	
B2	#5	STR	42'-10"	447	
B3	#4	STR	22'-8"	121	
B4	#4	STR	3'-5"	32	
B5	#4	STR	23'-8"	16	
B6	#4	STR	23'-4"	16	
B7	#4	STR	23'-0"	16	
B8	#4	STR	22'-9"	15	
B9	#4	STR	8'-8"	6	
B10	#4	STR	8'-4"	6	
B11	#4	STR	8'-0"	5	
B12	#4	STR	7'-9"	5	
H1	#6	2	12'-11"	427	
H2	#6	2	13'-1"	432	
H3	#6	3	12'-4"	370	
H4	#6	3	12'-2"	365	
K1	#4	STR	22'-8"	303	
K2	#4	STR	3'-4"	27	
S1	#4	4	11'-5"	397	
S2	#4	5	4'-2"	145	
S3	#4	6	7'-7"	162	
U1	#4	7	3'-8"	88	
U2	#4	7	6'-5"	69	
V1	#5	STR	8'-0"	601	
V2	#5	STR	10'-9"	112	
V3	#5	STR	10'-8"	89	
V4	#5	STR	10'-6"	88	
V5	#5	STR	10'-3"	86	
V6	#5	STR	9'-7"	100	
V7	#5	STR	9'-6"	100	
V8	#5	STR	9'-5"	118	

REINFORCING STEEL	5997 LBS.
CLASS A CONCRETE BREAKDOWN	
POUR #1 CAP, LOWER PART OF WINGS & COLLARS	32.4 C.Y.
POUR #2 BACKWALL & UPPER PART OF WINGS	12.3 C.Y.
TOTAL CLASS A CONCRETE	44.7 C.Y.



### SECTION B-B

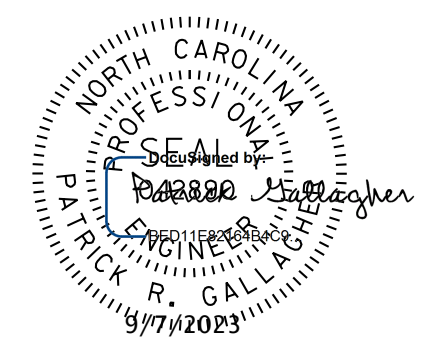
(CONCRETE COLLAR NOT SHOWN FOR CLARITY. SEE SHEET 1 OF 3 FOR DETAILS)



### SECTION A-A

(CONCRETE COLLAR NOT SHOWN FOR CLARITY. SEE SHEET 1 OF 3 FOR DETAILS)

PROJECT NO. B-4926  
LENOIR COUNTY  
 STATION: 25+45.00 -L-  
 SHEET 3 OF 3



STATE OF NORTH CAROLINA  
 DEPARTMENT OF TRANSPORTATION  
 RALEIGH

SUBSTRUCTURE  
 END BENT NO. 1  
 DETAILS

**DOCUMENT NOT CONSIDERED FINAL  
 UNLESS ALL SIGNATURES COMPLETED**

**JWT** Johnson, Mirmiran, & Thompson Inc.  
 4700 Falls of Neuse Rd, Suite 100,  
 Raleigh, NC, 27609  
 License No: C-3097

REVISIONS					
NO.	BY:	DATE:	NO.	BY:	DATE:
1			3		
2			4		

SHEET NO.	S1-33
TOTAL SHEETS	49

W:\CADD\Structures\0317-01 - B-4926 Lenoir 20 & 3A\Structures\Lenoir 20\Drawings\065\_B4926-SM.LE.03.01.dgn  
 DATE: 03/23 PM on Wednesday, September 06, 2023  
 TIME: 01:33

DWN. BY: WDC DATE: 03/2023  
 CHKD. BY: PRG DATE: 03/2023  
 DES. EGR. OF RECORD: PRG DATE: 03/2023