

8/17/99

3  
WOODY MAE FARMS, LLC  
DB 1153 PG 132  
DB 1816 PG 689  
PB 6 PG 276

PROJECT REFERENCE NO. B-4926		SHEET NO. UC-6	
DESIGNED BY: JWM	NORTH CAROLINA DEPARTMENT OF TRANSPORTATION		
DRAWN BY: MW	UTILITIES ENGINEERING SEC. PHONE: (919)707-8690 FAX: (919)250-4151		
CHECKED BY: DEG			
APPROVED BY: JWM			
REVISED:			

UTILITY CONSTRUCTION  
DOCUMENT NOT CONSIDERED FINAL  
UNLESS ALL SIGNATURES COMPLETED

McDAVID ASSOCIATES, INC.  
SEAL 1972

McDAVID ASSOCIATES, INC.  
SEAL 28431  
10/13/22  
JOSEPH W. MCKENNEY  
UTILITY CONSTRUCTION PLANS ONLY

McDAVID ASSOCIATES, INC.  
Corporate License No. C-131

CORPORATE OFFICE  
Engineers - Planners - Land Surveyors  
3714 North Main Street  
P. O. Box 4778  
Farmville, NC 27830  
Telephone: (252) 755-2159  
Facsimile: (252) 755-7220

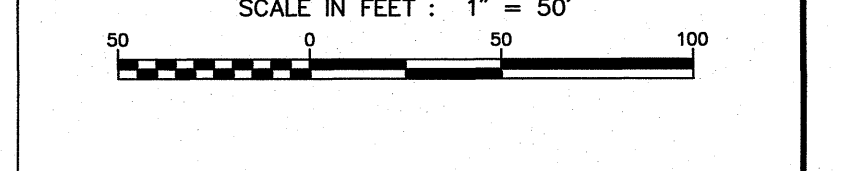
BRANCH OFFICE  
Engineers - Planners  
109 East Walnut Street  
P. O. Box 4778  
Goldboro, NC 27533  
Telephone: (919) 736-7630  
Facsimile: (919) 735-7351

REVISIONS

NO.	DATE	DESCRIPTION

MAI REVIEW OFFICER APPROVAL

DATE \_\_\_\_\_ MAI REVIEW OFFICER \_\_\_\_\_



NOTE:  
CONTRACTOR SHALL FIELD LOCATE ALL EXISTING UTILITIES PRIOR TO THE INSTALLATION OF THE PROPOSED SEWER FORCE MAIN. PAYMENT FOR LOCATING THE EXISTING UTILITIES SHALL BE INCLUDED IN THE PRICE OF THE WORK.

ABANDONMENT OF THE EXISTING FORCE MAIN SHALL BE PERFORMED IN SECTIONS, TO ALLOW THE PIPE TO BE COMPLETELY FILLED.

CONTRACTOR SHALL COORDINATE THE TIE-IN TO THE FORCE MAIN WITH THE TOWN OF DOVER. TIE-INS SHALL BE PERFORMED AFTER 11:00 PM AND BEFORE 5:00 AM. CONTRACTOR, WITH ASSISTANCE FROM THE TOWN SHALL LOCATE THE PLUG VALVES LOCATED UPSTREAM AND DOWNSTREAM FROM THE PROJECT AREA. CONTRACTOR SHALL BE PREPARED TO CONTAIN AND PUMP AND HAUL WASTEWATER WHEN MAKING THE TIE-INS TO THE EXISTING FORCE MAIN. PAYMENT FOR LOCATING PLUG VALVES, CONTAINING AND PUMPING AND HAULING WASTEWATER SHALL BE INCLUDED IN THE PRICE OF THE WORK.

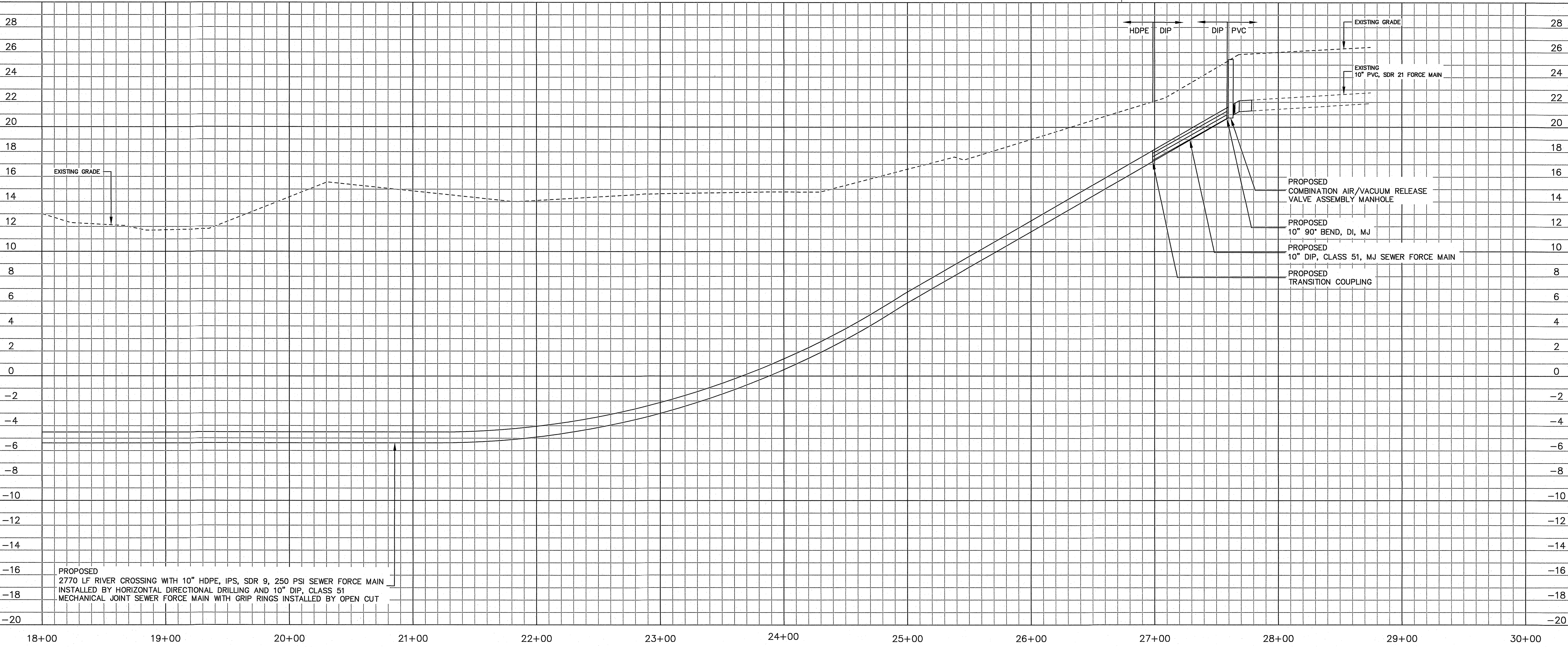
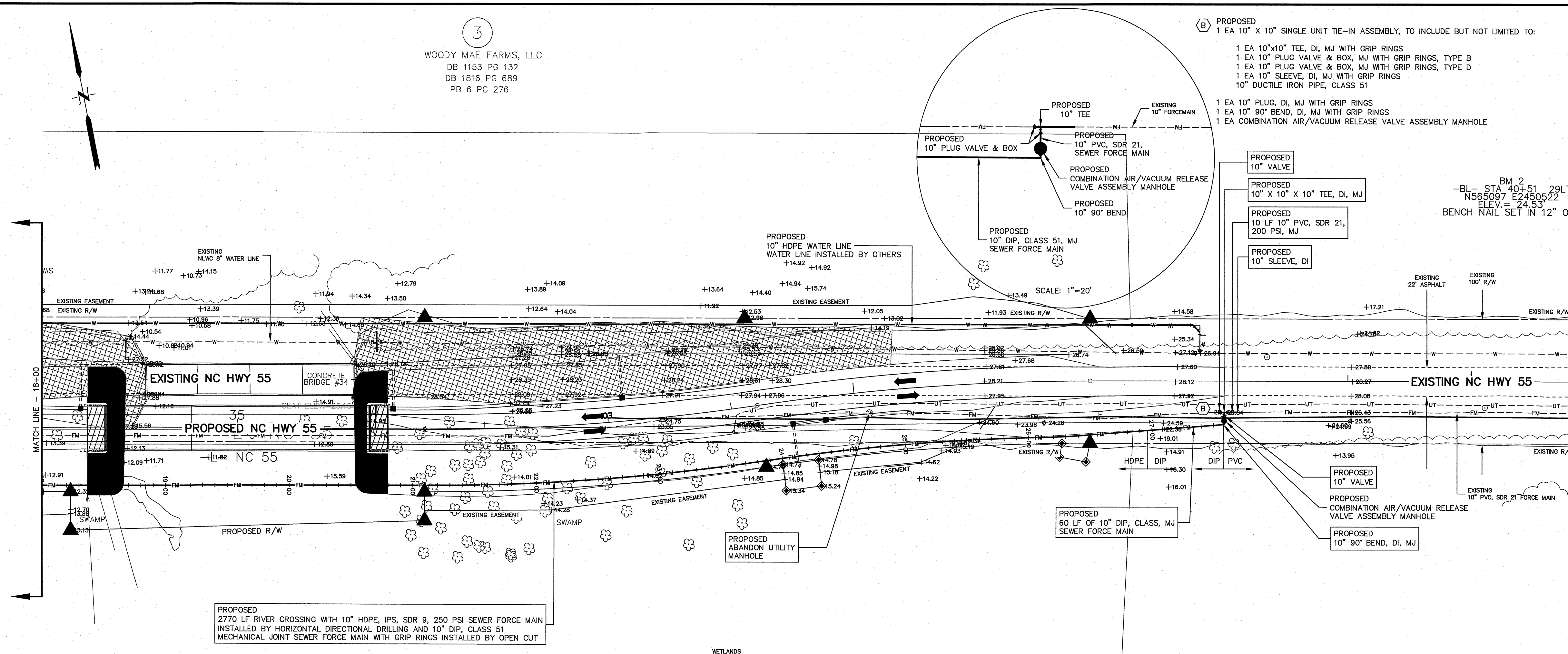
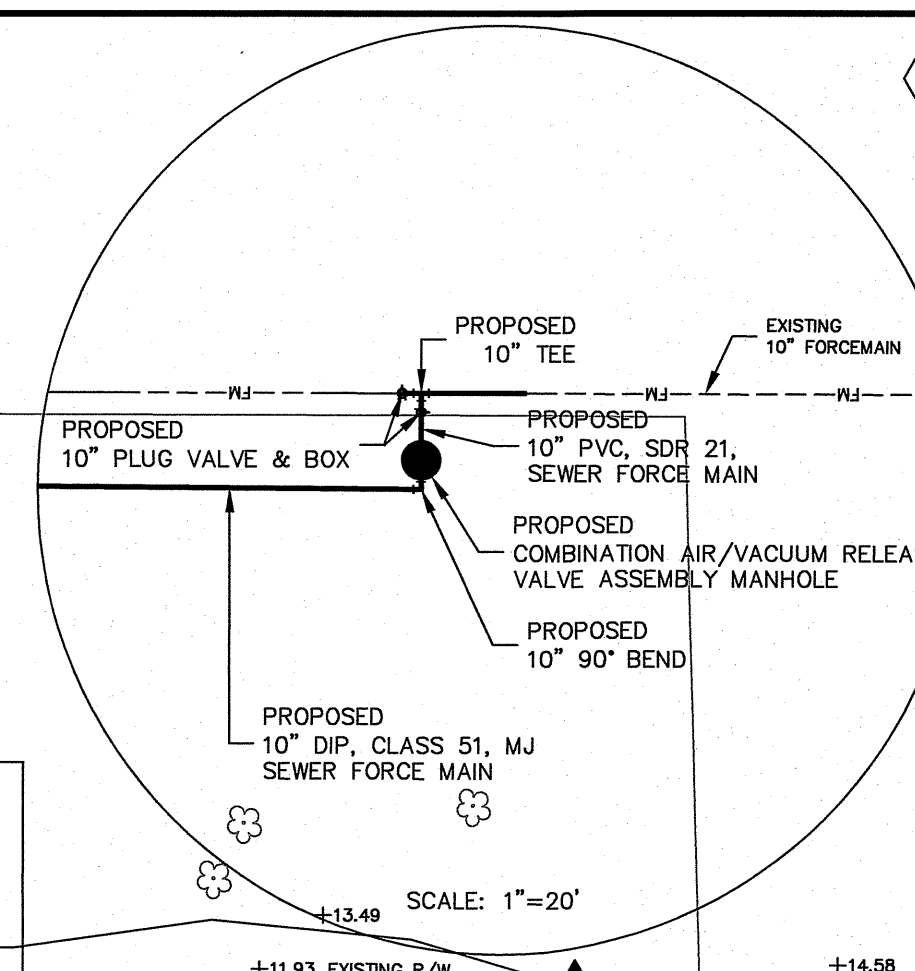
THE EXISTING PLUG VALVES ARE LOCATED AT OR IN CLOSE PROXIMITY TO:

- \* 500 FT FROM INTERSECTION OF SETH WEST ROAD ON SOUTH SIDE
- \* 800 FT WEST FROM THE CENTER OF THE NEUSE RIVER
- \* 300 FT EAST FROM TOWER HILL ROAD

ALL VALVES AND FITTINGS SHALL BE INSTALLED WITH GRIP RINGS.

NOTE:  
THE ESTIMATED QUANTITY OF DUCTILE IRON SEWER PIPE FITTINGS ON THIS PLAN SHEET IS 415 POUNDS. THE ACTUAL QUANTITY AND TYPE OF FITTINGS WILL VARY BASED ON FIELD CONDITIONS.

- PROPOSED  
1 EA 10" X 10" SINGLE UNIT TIE-IN ASSEMBLY, TO INCLUDE BUT NOT LIMITED TO:
- 1 EA 10"x10" TEE, DI, MJ WITH GRIP RINGS
  - 1 EA 10" PLUG VALVE & BOX, MJ WITH GRIP RINGS, TYPE B
  - 1 EA 10" PLUG VALVE & BOX, MJ WITH GRIP RINGS, TYPE D
  - 1 EA 10" SLEEVE, DI, MJ WITH GRIP RINGS
  - 10" DUCTILE IRON PIPE, CLASS 51
  - 1 EA 10" PLUG, DI, MJ WITH GRIP RINGS
  - 1 EA 10" 90° BEND, DI, MJ WITH GRIP RINGS
  - 1 EA COMBINATION AIR/VACUUM RELEASE VALVE ASSEMBLY MANHOLE



PROPOSED  
2770 LF RIVER CROSSING WITH 10" HDPE, IPS, SDR 9, 250 PSI SEWER FORCE MAIN  
INSTALLED BY HORIZONTAL DIRECTIONAL DRILLING AND 10" DIP, CLASS 51  
MECHANICAL JOINT SEWER FORCE MAIN WITH GRIP RINGS INSTALLED BY OPEN CUT

PROPOSED  
2770 LF RIVER CROSSING WITH 10" HDPE, IPS, SDR 9, 250 PSI SEWER FORCE MAIN  
INSTALLED BY HORIZONTAL DIRECTIONAL DRILLING AND 10" DIP, CLASS 51  
MECHANICAL JOINT SEWER FORCE MAIN WITH GRIP RINGS INSTALLED BY OPEN CUT

REVISIONS