

8/17/99

PROJECT REFERENCE NO. B-4926	SHEET NO. UC-5
DESIGNED BY: JWM	NORTH CAROLINA DEPARTMENT OF TRANSPORTATION
DRAWN BY: MW	UTILITIES ENGINEERING SEC.
CHECKED BY: DEG	PHONE: (919)707-8690
APPROVED BY: JWM	FAX: (919)250-4151
REVISED:	

UTILITY CONSTRUCTION
DOCUMENT NOT CONSIDERED FINAL
UNLESS ALL SIGNATURES COMPLETED

SEAL
1972

SEAL
28431

UTILITY CONSTRUCTION
PLANS ONLY

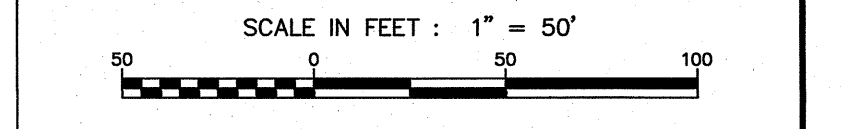
McDAVID ASSOCIATES, INC.
Corporate License No. C-131

CORPORATE OFFICE Engineers • Planners • Land Surveyors 3714 North Main Street P. O. Box 1778 Farmville, NC 27833 Telephone: (252) 755-2139 Facsimile: (252) 755-7220	BRANCH OFFICE Engineers • Planners 109 East Walnut Street P. O. Box 1778 Goldfields, NC 27833 Telephone: (919) 736-7630 Facsimile: (919) 735-7251
---	--

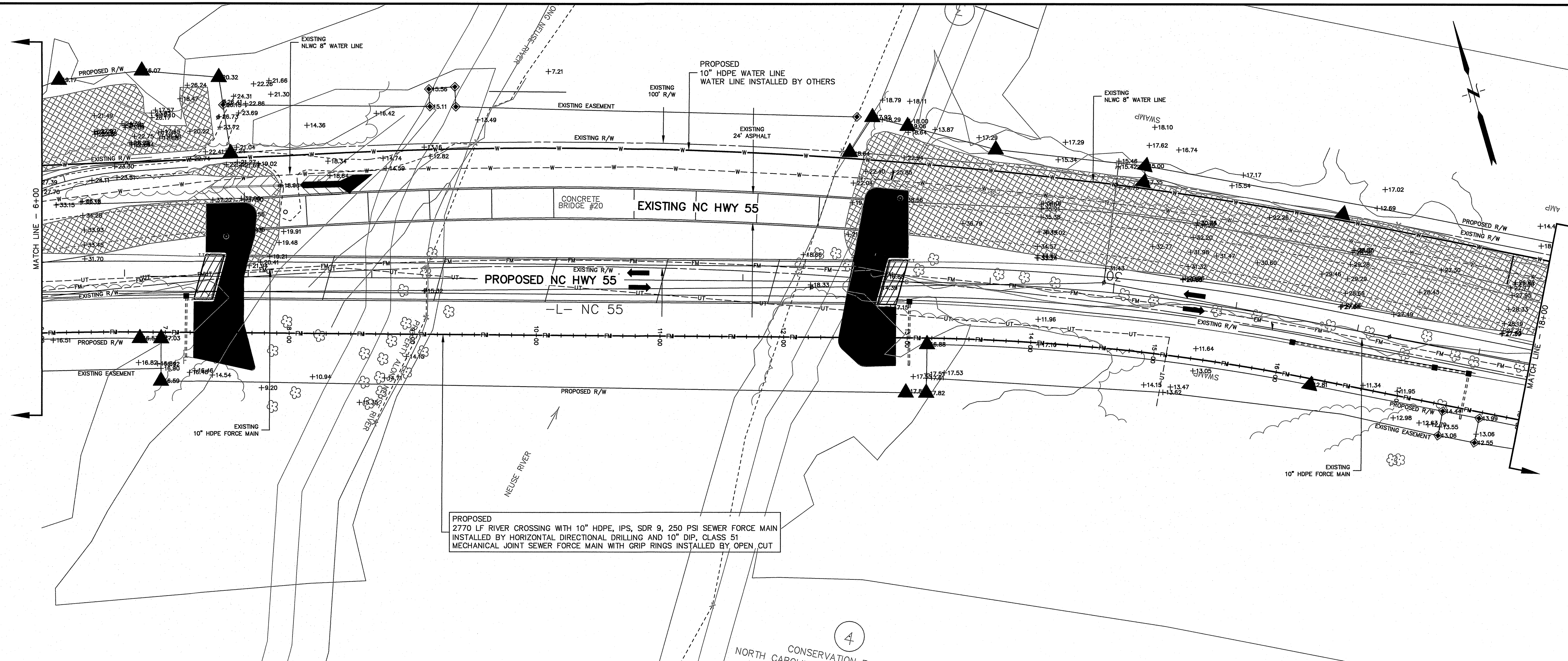
REVISIONS		
NO.	DATE	DESCRIPTION

MAI REVIEW OFFICER APPROVAL

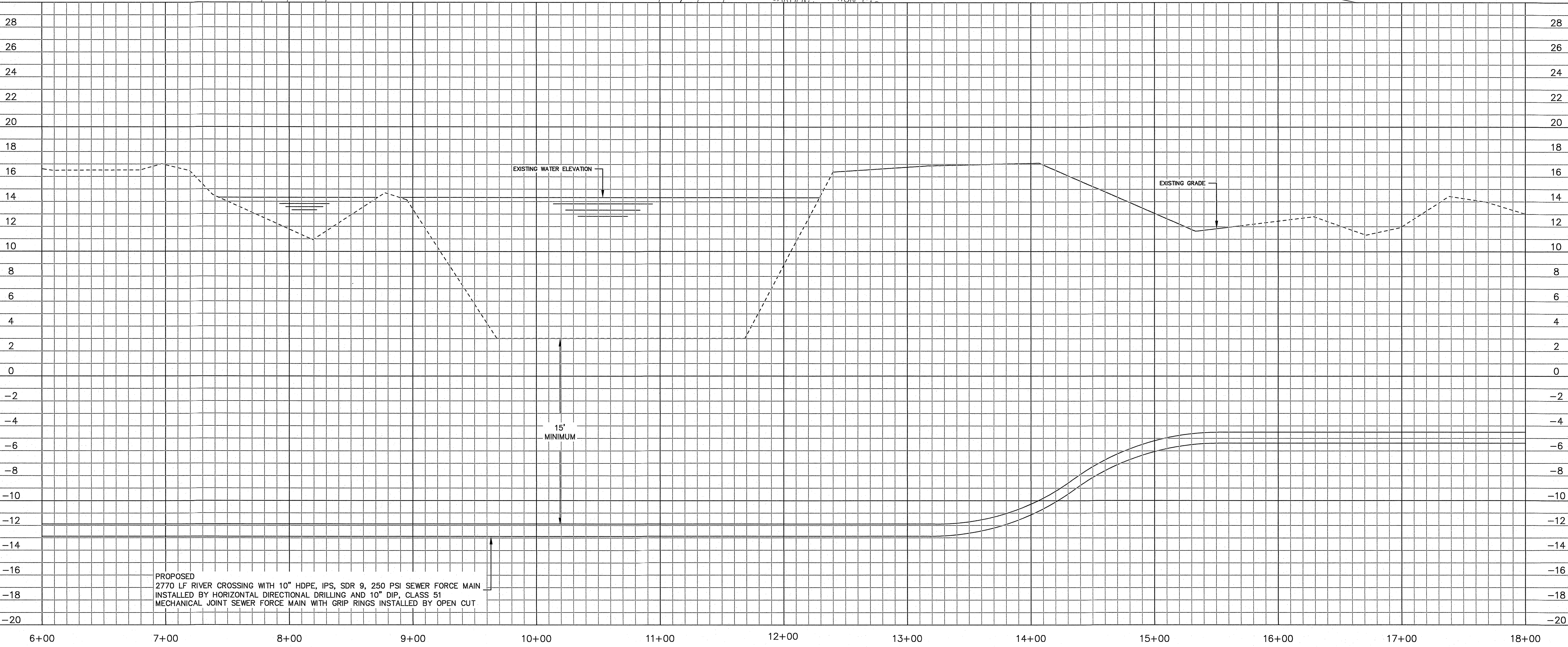
DATE _____ MAI REVIEW OFFICER _____



NOTE:
THE ESTIMATED QUANTITY OF DUCTILE IRON SEWER PIPE FITTINGS ON THIS PLAN SHEET IS 0 POUNDS. THE ACTUAL QUANTITY AND TYPE OF FITTINGS WILL VARY BASED ON FIELD CONDITIONS.



PROPOSED
2770 LF RIVER CROSSING WITH 10" HDPE, IPS, SDR 9, 250 PSI SEWER FORCE MAIN
INSTALLED BY HORIZONTAL DIRECTIONAL DRILLING AND 10" DIP, CLASS 51
MECHANICAL JOINT SEWER FORCE MAIN WITH GRIP RINGS INSTALLED BY OPEN CUT



PROPOSED
2770 LF RIVER CROSSING WITH 10" HDPE, IPS, SDR 9, 250 PSI SEWER FORCE MAIN
INSTALLED BY HORIZONTAL DIRECTIONAL DRILLING AND 10" DIP, CLASS 51
MECHANICAL JOINT SEWER FORCE MAIN WITH GRIP RINGS INSTALLED BY OPEN CUT

REVISIONS