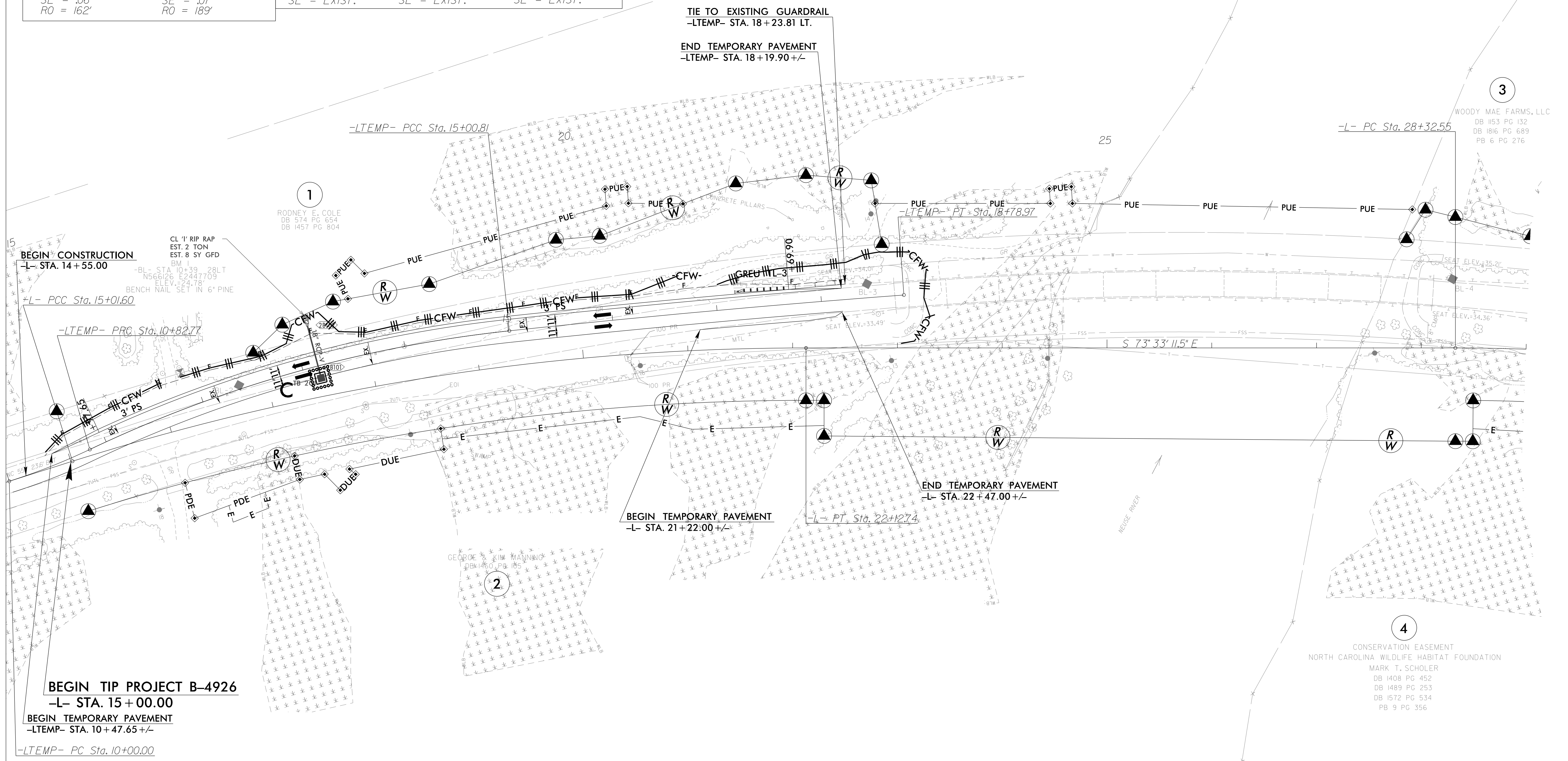


TEMPORARY PAVEMENT WIDENING DETAIL (-LTEMP-)

PROJECT REFERENCE NO. B-4926 SHEET NO. EC-6/ CONST.2B-1

TRANSYSTEMS
1 Glenwood Avenue
Raleigh, NC 27603
Tel: 919.789.9977
Fax: 919.789.9591
License: F-0453

| -L- | | -LTEMP- | | |
|---------------------------------------|---------------------------------------|--------------------------------------|---------------------------------------|--------------------------------------|
| PI Sta 18+59.98 | PI Sta 30+02.07 | PI Sta 10+41.45 | PI Sta 12+93.81 | PI Sta 16+89.91 |
| $\Delta = 17^{\circ} 33' 45.4''$ (RT) | $\Delta = 10^{\circ} 38' 32.4''$ (RT) | $\Delta = 7^{\circ} 54' 15.5''$ (LT) | $\Delta = 19^{\circ} 23' 23.1''$ (RT) | $\Delta = 1^{\circ} 48' 20.2''$ (RT) |
| D = 2' 28" 10.7" | D = 3' 08" 53.2" | D = 9' 32" 57.5" | D = 4' 38" 18.0" | D = 0' 28" 38.9" |
| L = 711.14' | L = 338.05' | L = 82.77' | L = 418.03' | L = 378.17' |
| T = 358.38' | T = 169.51' | T = 41.45' | T = 211.03' | T = 189.10' |
| R = 2,320.00' | R = 1,820.00' | R = 600.00' | R = 1,235.27' | R = 12,000.00' |
| SE = .06 | SE = .07 | SE = EXIST. | SE = EXIST. | SE = EXIST. |
| RO = 162' | RO = 189' | | | |



BEGIN TIP PROJECT B-4926
-L- STA. 15+00.00
BEGIN TEMPORARY PAVEMENT
-LTEMP- STA. 10+47.65+/-
-LTEMP- PC Sta. 10+00.00

BEGIN TEMPORARY PAVEMENT
-L- STA. 21+22.00+/-
-L- PT. Sta. 22+127.4

TIE TO EXISTING GUARDRAIL
-LTEMP- STA. 18+23.81 LT.
END TEMPORARY PAVEMENT
-LTEMP- STA. 18+19.90+/-

NOTE: SEE TMP-4 FOR ADDITIONAL DETAILS INCLUDING SHORING AND PORTABLE CONCRETE BARRIER.
SEE X-2 THRU X-5 FOR TEMPORARY PAVEMENT CROSS SECTIONS.

6/2/99
TRANSYSTEMS, INC. 1 GLENWOOD AVENUE, RALEIGH, NC 27603
TEL: 919.789.9977 FAX: 919.789.9591
WWW.TRANSYSTEMS.COM