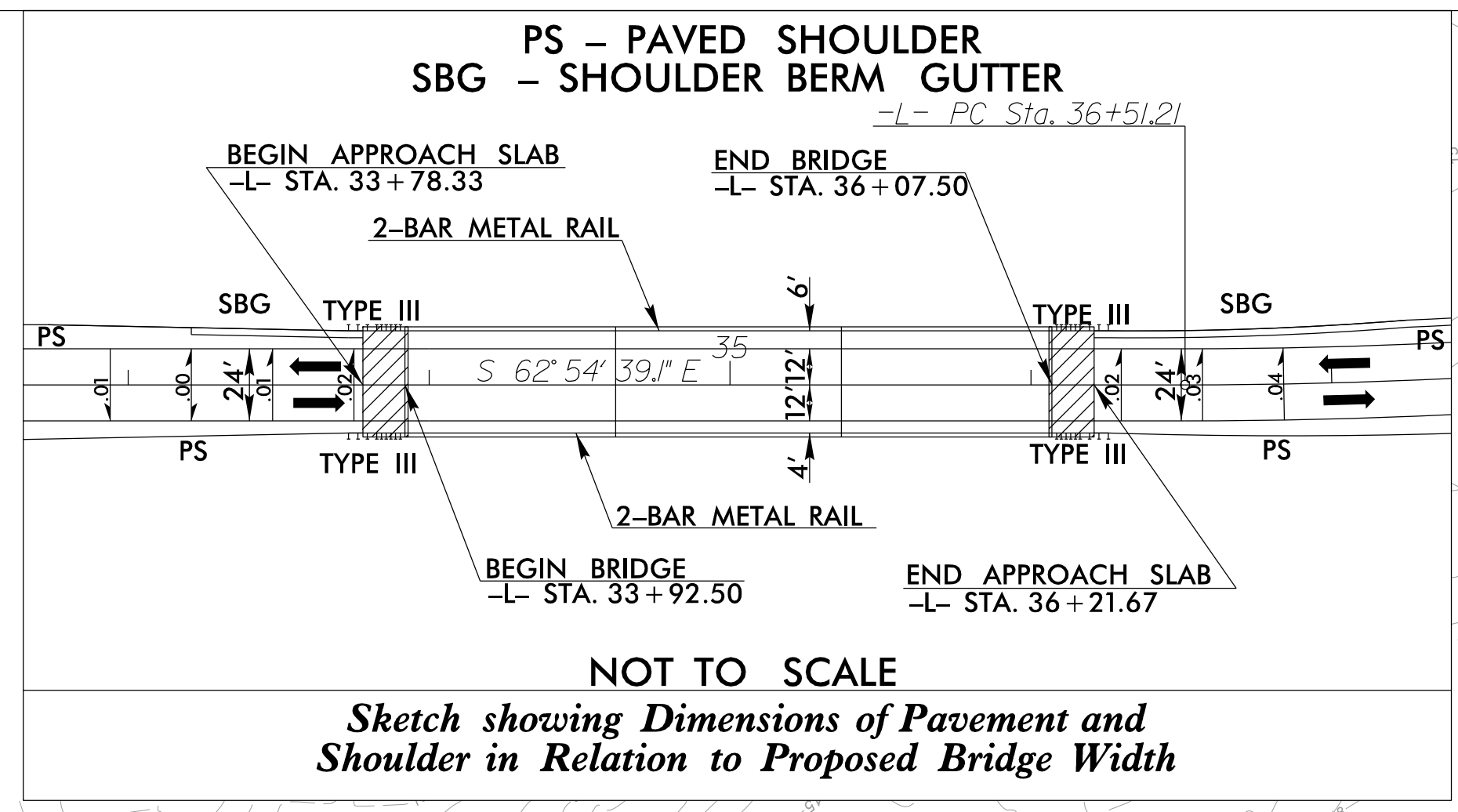


6/2/99

TRANSYSTEMS
 1 Glenwood Avenue
 Raleigh, NC 27603
 Tel: 919.789.9977
 Fax: 919.789.9591
 License: F-0453



-L-		
PI Sta 30+02.07	PI Sta 37+86.49	PI Sta 40+56.55
$\Delta = 10' 38' 32.4''$ (RT)	$\Delta = 8' 30' 06.8''$ (LT)	$\Delta = 8' 30' 06.8''$ (RT)
$D = 3' 08' 53.2''$	$D = 3' 08' 53.2''$	$D = 3' 08' 53.2''$
$L = 338.05'$	$L = 270.06'$	$L = 270.06'$
$T = 169.51'$	$T = 135.28'$	$T = 135.28'$
$R = 1,820.00'$	$R = 1,820.00'$	$R = 1,820.00'$
$SE = .07$	*SE = SEE PLANS	*SE = SEE PLANS
$RO = 189'$		

*DESIGN EXCEPTION REQUIRED FOR SUPERELEVATION.

NOTE: ALL RIP RAP TO BE GRANITE MATERIAL

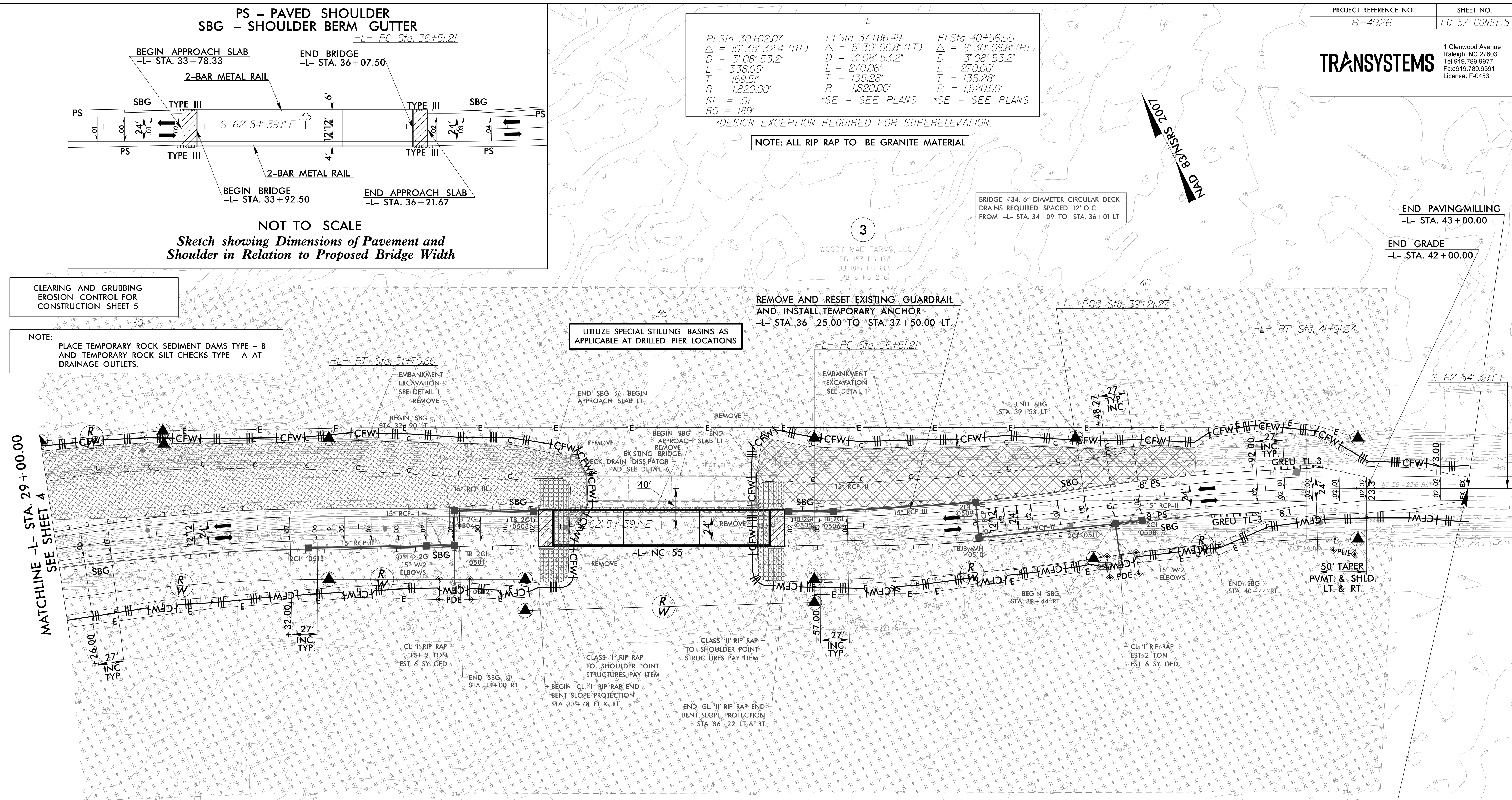
BRIDGE #34: 6" DIAMETER CIRCULAR DECK
 DRAINS REQUIRED SPACED 12' O.C.
 FROM -L- STA. 34+09 TO STA. 36+01 LT

CLEARING AND GRUBBING
 EROSION CONTROL FOR
 CONSTRUCTION SHEET 5

NOTE:
 PLACE TEMPORARY ROCK SEDIMENT DAMS TYPE - B
 AND TEMPORARY ROCK SILT CHECKS TYPE - A AT
 DRAINAGE OUTLETS.

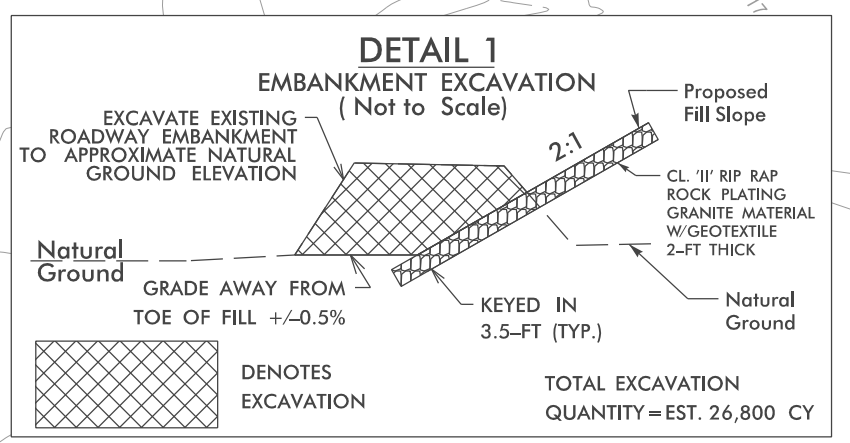
UTILIZE SPECIAL STILLING BASINS AS
 APPLICABLE AT DRILLED PIER LOCATIONS

REMOVE AND RESET EXISTING GUARDRAIL
 AND INSTALL TEMPORARY ANCHOR
 -L- STA. 36+25.00 TO STA. 37+50.00 LT.

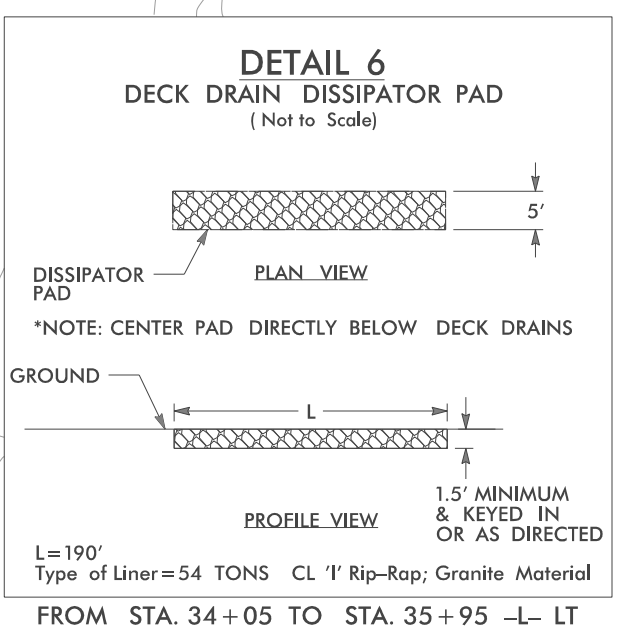


MATCHLINE -L- STA. 29+00.00
 SEE SHEET 4

END TIP PROJECT B-4926
 -L- STA. 43+00.00



FROM STA. 17+00 TO STA. 23+25 -L- LT
 FROM STA. 27+81 TO STA. 34+27 -L- LT
 FROM STA. 35+92 TO STA. 40+00 -L- LT
 FROM STA. 10+00 TO STA. 12+18 -DRV- RT
 FROM STA. 10+00 TO STA. 12+18 -DRV- LT



FROM STA. 34+05 TO STA. 35+95 -L- LT

PROVIDE CLASS 'II' RIP RAP ROCK PLATING (GRANITE) ON
 ALL SLOPES STEEPER THAN 3:1 OR AS INDICATED
 ON THE PLANS. 2'-FT THICK TO SHOULDER POINT.
 REFER TO STANDARD ROCK PLATING DETAIL (STD 275.01)

NOTE: GUARDRAIL TRANSITIONS WITH A 50:1 TAPER TO MATCH BRIDGE OFFSETS.
 SEE TMP PLANS FOR SHORING LOCATIONS.

SEE SHEET 6 FOR -L- PROFILE