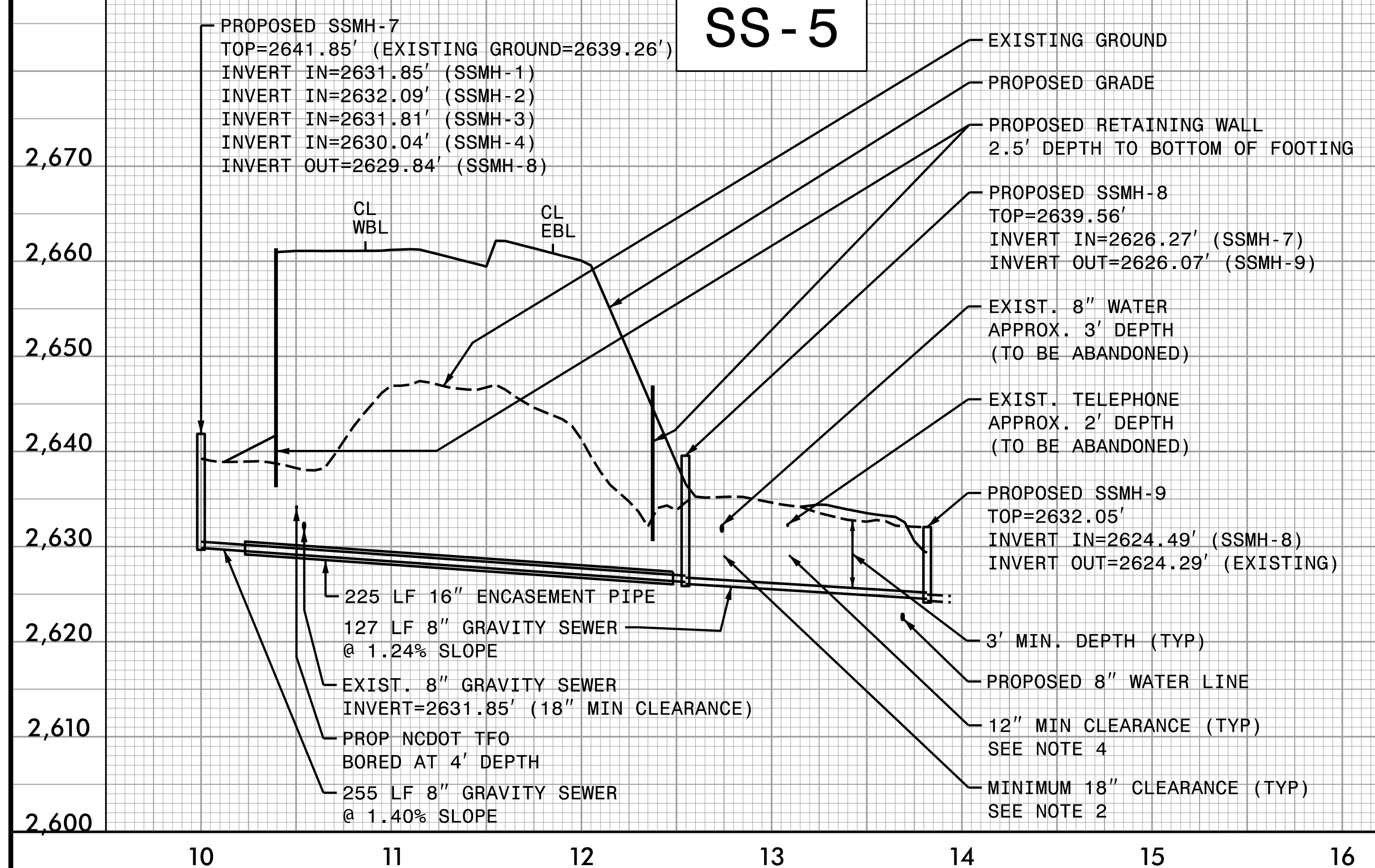


8/17/99

NOTES:

1. SSMH-2, SSMH-3, SSMH-7, AND SSMH-9 WILL BE RAISED TO 2' ABOVE 100-YEAR FLOOD ELEVATION. SEE UC-7 AND UC-8 FOR PROFILES. (100-YEAR FLOOD ELEVATIONS: SSMH-2,3,7=2639.85' / SSMH-9=2630.05')



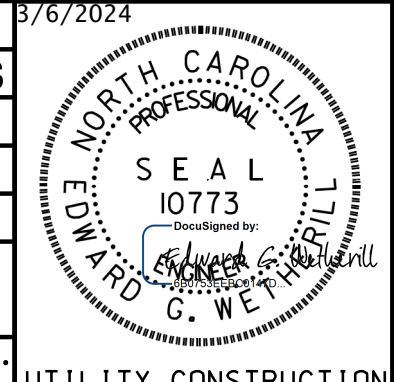
NOTES:

1. LOCATION AND DEPTHS OF EXISTING UTILITIES ARE APPROXIMATE. CONTRACTOR TO FIELD VERIFY LOCATIONS AND DEPTHS PRIOR TO WATER AND SEWER CONSTRUCTION.
2. A MINIMUM OF 18" CLEARANCE MUST BE PROVIDED WHEN CROSSING A STORM SEWER, GRAVITY SEWER, OR WATER PIPE.
3. CONTRACTOR TO BACKFILL OVER WATER AND SEWER LINE PRIOR TO TESTING AND PLACING INTO SERVICE.
4. A MINIMUM OF 12" CLEARANCE MUST BE PROVIDED WHEN CROSSING A COMMUNICATIONS OR ELECTRIC LINE.
5. A MINIMUM OF 18" CLEARANCE MUST BE PROVIDED WHEN CROSSING A GAS LINE.

WETHERILL ENGINEERING
 1223 Jones Franklin Rd.
 Raleigh, N.C. 27606
 License No. F-0377
 Bus: 919 851 8077
 Fax: 919 851 8107

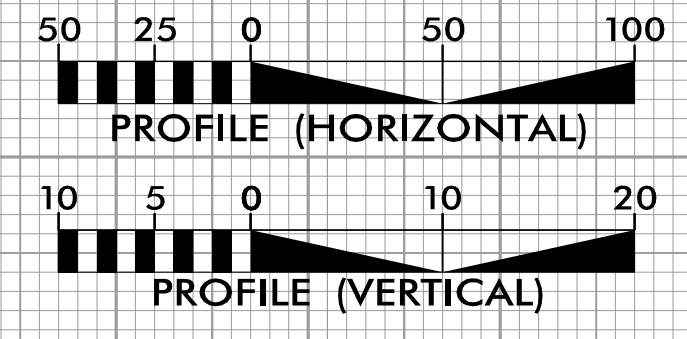
TRANSPORTATION PLANNING/DESIGN - BRIDGE/STRUCTURE DESIGN
 CIVIL/SITE DESIGN - GIS/GPS - CONSTRUCTION OBSERVATION

PROJECT REFERENCE NO. HB-0002	SHEET NO. UC-8
DESIGNED BY: PKP	DATE: 8/6/2024
DRAWN BY: TWR/JDS	
CHECKED BY: PKP	
APPROVED BY: SLK	
REVISED:	
NORTH CAROLINA DEPARTMENT OF TRANSPORTATION	UTILITY CONSTRUCTION PLANS ONLY
UTILITIES ENGINEERING SEC. PHONE: (919) 707-6690 FAX: (919) 250-4151	



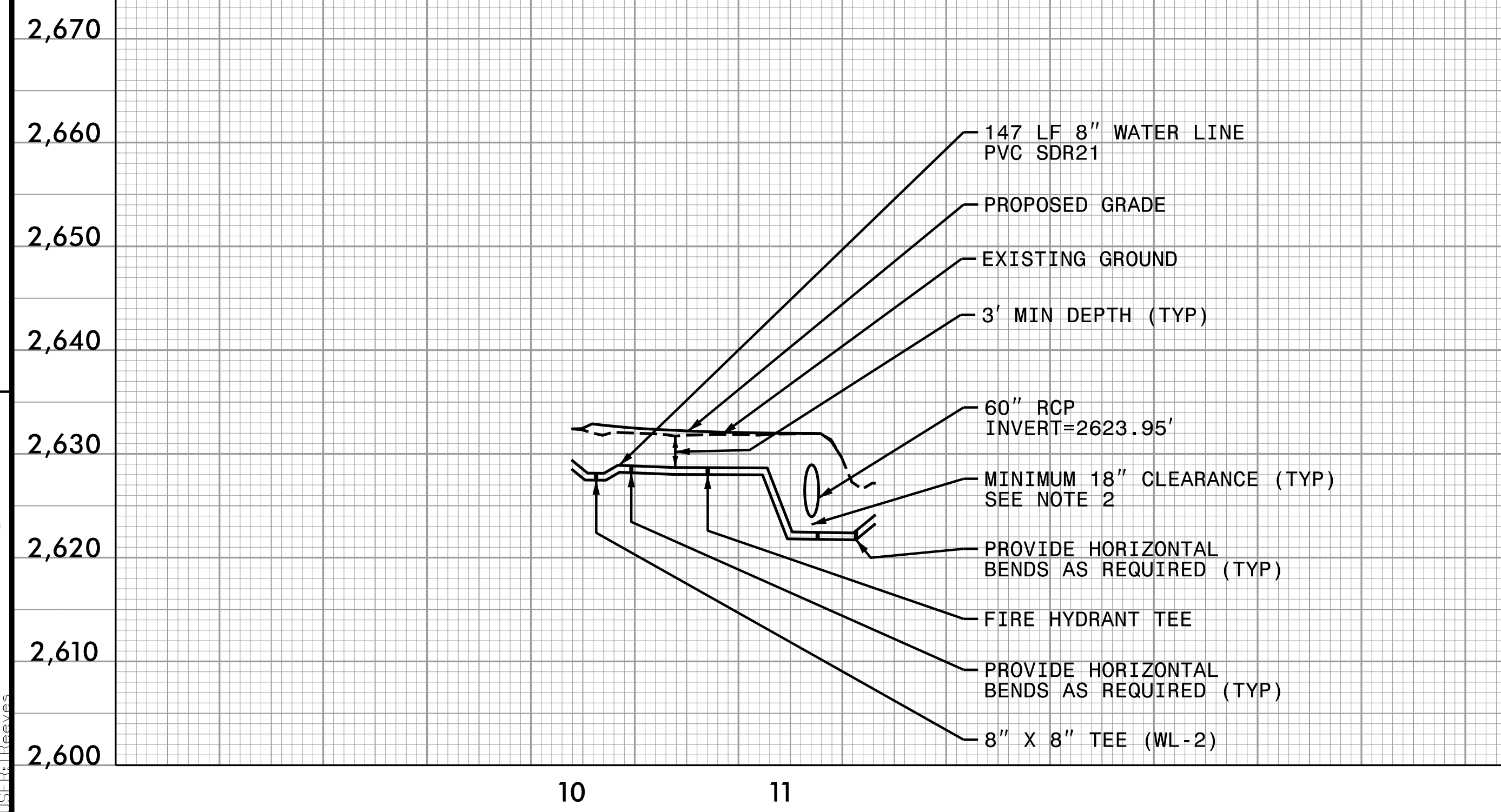
DOCUMENT NOT CONSIDERED FINAL UNLESS ALL SIGNATURES COMPLETED

UTILITY CONSTRUCTION

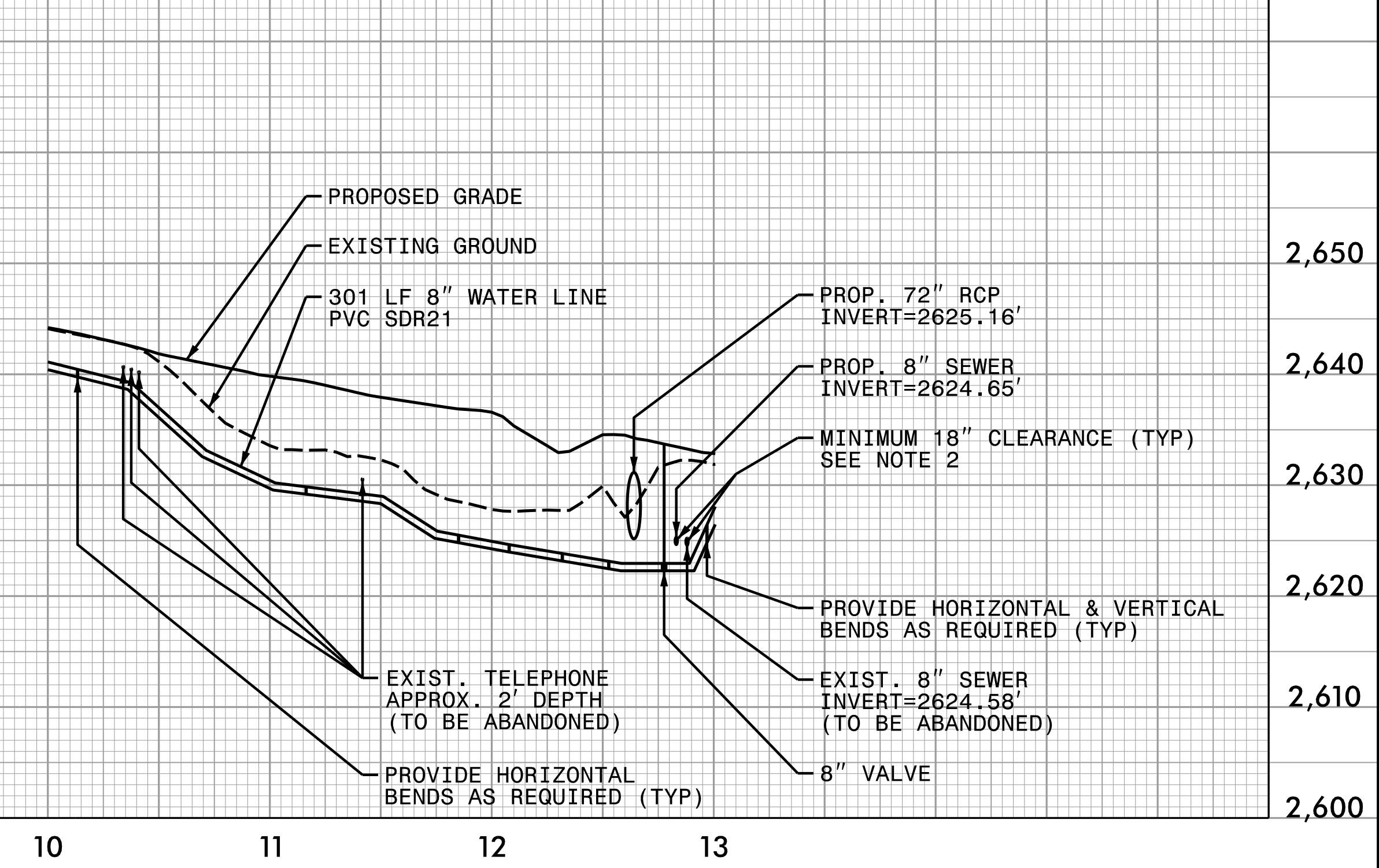


REVISIONS

WL - 1



WL - 2



3/5/2024 HB0002-ut-UC_psh_08.dgn