

8/17/99

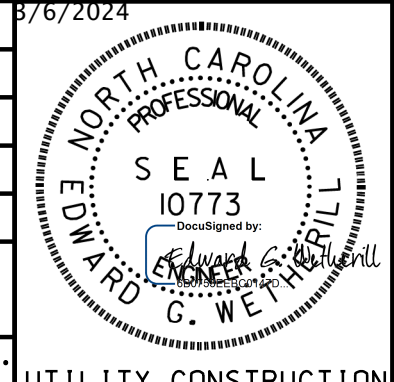
NOTES:

1. SSMH-2, SSMH-3, SSMH-7, AND SSMH-9 WILL BE RAISED TO 2' ABOVE 100-YEAR FLOOD ELEVATION. SEE UC-7 AND UC-8 FOR PROFILES. (100-YEAR FLOOD ELEVATIONS: SSMH-2,3,7=2639.85' / SSMH-9=2630.05')

**WETHERILL ENGINEERING**  
 1223 Jones Franklin Rd.  
 Raleigh, N.C. 27606  
 License No. F-0377  
 Bus: 919 851 8077  
 Fax: 919 851 8107

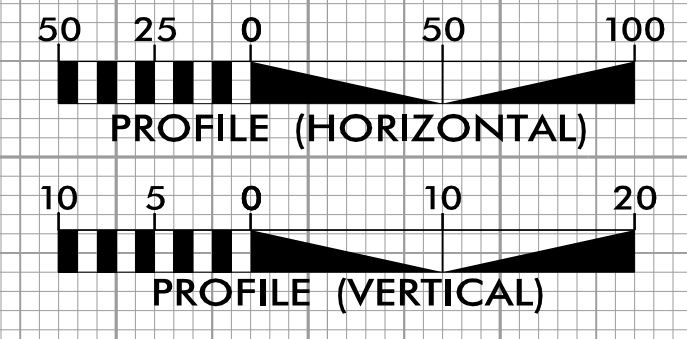
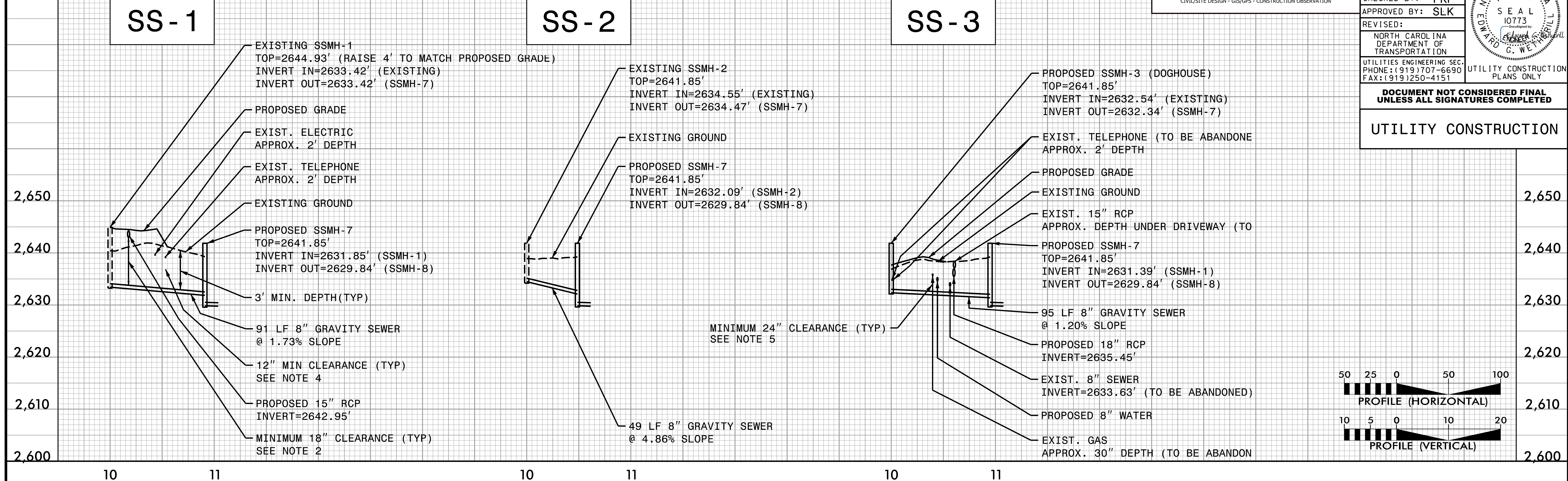
TRANSPORTATION PLANNING/DESIGN - BRIDGE/STRUCTURE DESIGN  
 CIVIL/SITE DESIGN - GIS/GPS - CONSTRUCTION OBSERVATION

PROJECT REFERENCE NO. HB-0002	SHEET NO. UC-7
DESIGNED BY: PKP	DATE: 3/6/2024
DRAWN BY: TWR	
CHECKED BY: PKP	
APPROVED BY: SLK	
REVISED:	
NORTH CAROLINA DEPARTMENT OF TRANSPORTATION	UTILITY CONSTRUCTION PLANS ONLY
UTILITIES ENGINEERING SEC. PHONE: (919) 707-6690 FAX: (919) 250-4151	

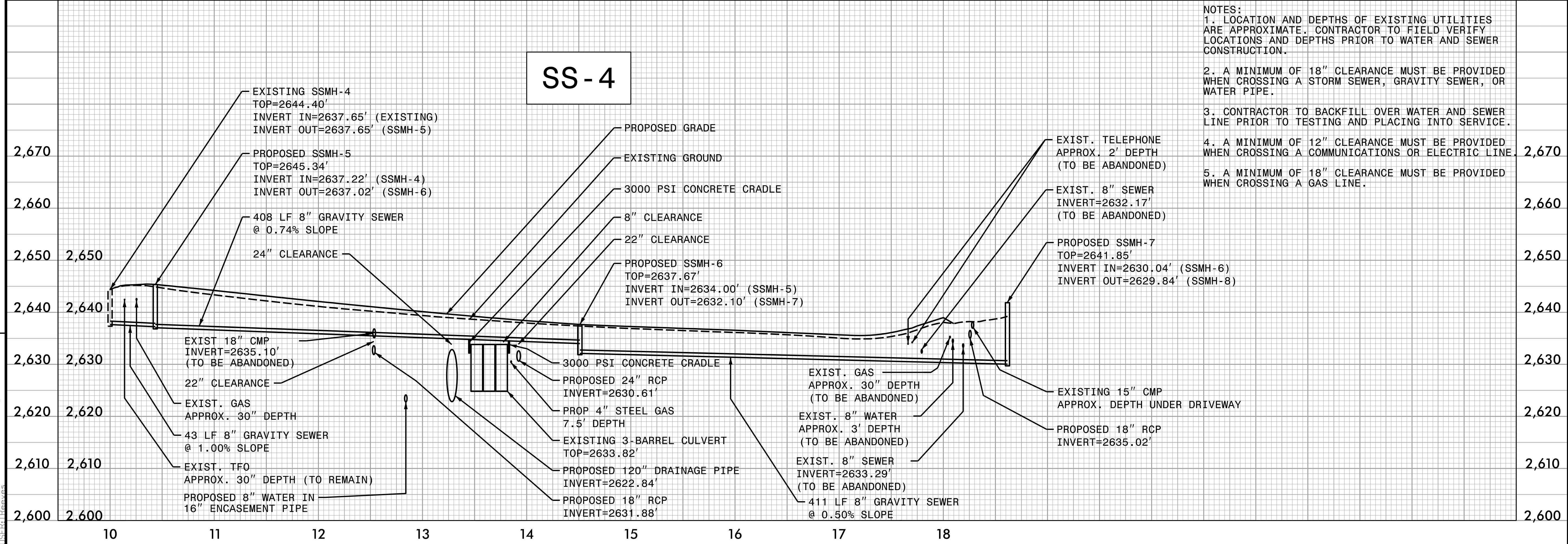


DOCUMENT NOT CONSIDERED FINAL UNLESS ALL SIGNATURES COMPLETED

UTILITY CONSTRUCTION



REVISIONS



NOTES:

- LOCATION AND DEPTHS OF EXISTING UTILITIES ARE APPROXIMATE. CONTRACTOR TO FIELD VERIFY LOCATIONS AND DEPTHS PRIOR TO WATER AND SEWER CONSTRUCTION.
- A MINIMUM OF 18" CLEARANCE MUST BE PROVIDED WHEN CROSSING A STORM SEWER, GRAVITY SEWER, OR WATER PIPE.
- CONTRACTOR TO BACKFILL OVER WATER AND SEWER LINE PRIOR TO TESTING AND PLACING INTO SERVICE.
- A MINIMUM OF 12" CLEARANCE MUST BE PROVIDED WHEN CROSSING A COMMUNICATIONS OR ELECTRIC LINE.
- A MINIMUM OF 18" CLEARANCE MUST BE PROVIDED WHEN CROSSING A GAS LINE.

3/5/2024 HB0002-ut\_uc\_psh\_07.dgn