

8/17/99

NOTES:

- SSMH-2, SSMH-3, SSMH-7, AND SSMH-9 WILL BE RAISED TO 2' ABOVE 100-YEAR FLOOD ELEVATION. SEE UC-7 AND UC-8 FOR PROFILES. (100-YEAR FLOOD ELEVATIONS: SSMH-2,3,7=2639.85' / SSMH-9=2630.05')
- NCDOT FIBER CONDUIT TO BE BORED AT A 4' DEPTH THROUGHOUT PROJECT LIMITS.
- NCDOT FIBER TRANSITIONS FROM IN FRONT OF THE GUARD RAIL TO BEHIND THE GUARD RAIL AT -L- STATION 321+65 +/-.

WATER METER
24 LF WATER SERVICE LINE

REMOVE WATER METER

49 LF 8" SANITARY GRAVITY SEWER
SS-2; PVC SDR21

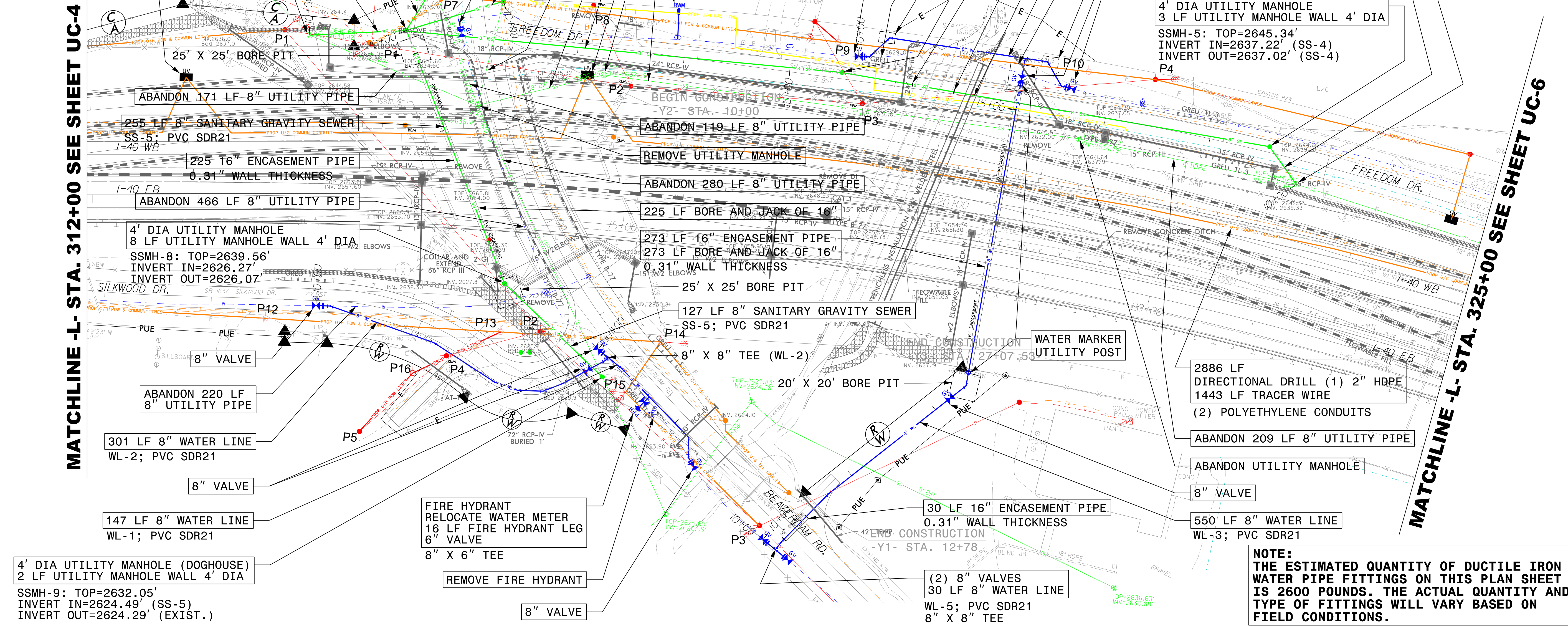
4' DIA UTILITY MANHOLE
6 LF UTILITY MANHOLE WALL 4' DIA
SSMH-7: TOP=2641.85'
EX. GROUND=2639.26'
INVERT IN=2631.85' (SS-1)
INVERT IN=2632.09' (SS-2)
INVERT IN=2631.81' (SS-3)
INVERT IN=2630.04' (SS-4)
INVERT OUT=2629.84' (SS-5)

91 LF 8" SANITARY GRAVITY SEWER
SS-1; PVC SDR21

4' DIA UTILITY MANHOLE (EXISTING)
4 LF UTILITY MANHOLE WALL 4' DIA
SSMH-1: TOP=2644.93'
SSMH-1: EX. TOP=2640.68'
(RAISE 4' TO MATCH PROPOSED GRADE)
INVERT IN=2633.42' (EXIST.)
INVERT OUT=2633.42' (SS-1)

NCDOT JUNCTION BOX

MATCHLINE -L- STA. 312+00 SEE SHEET UC-4



WETHERILL ENGINEERING
1223 Jones Franklin Rd.
Raleigh, N.C. 27606
License No. F-0377
Bus: 919 851 8077
Fax: 919 851 8107

TRANSPORTATION PLANNING/DESIGN - BRIDGE/STRUCTURE DESIGN
CIVIL/SITE DESIGN - GIS/GPS - SURVEY/SUE - UTILITIES - CONSTRUCTION OBSERVATION

PROJECT REFERENCE NO. HB-0002	SHEET NO. UC-5
DESIGNED BY: PKP	3/27/2024
DRAWN BY: TWR/JDS	
CHECKED BY: PKP	
APPROVED BY: SLK	
REVISED:	
NORTH CAROLINA DEPARTMENT OF TRANSPORTATION	
UTILITIES ENGINEERING SEC. PHONE: (919) 707-6690 FAX: (919) 250-4151	
UTILITY CONSTRUCTION PLANS ONLY	



UTILITY CONSTRUCTION

DOCUMENT NOT CONSIDERED FINAL UNLESS ALL SIGNATURES COMPLETED

ABANDON 205 LF 8" UTILITY PIPE

10' X 15' BORE PIT

4' DIA UTILITY MANHOLE
SSMH-6: TOP=2637.67'
INVERT IN=2634.00' (SS-4)
INVERT OUT=2632.10' (SS-4)

3000 PSI CONCRETE CRADLE
(SEE SHEET UC-3D FOR DETAIL)

408 LF 8" SANITARY GRAVITY SEWER
SS-4; PVC SDR21

222 LF 8" WATER LINE
WL-4; 72 LF PVC SDR21
WL-4; 150 LF PVC C900 BORED UNDER CREEK AT 5' CLEARANCE

20' X 20' BORE PIT

10' X 15' BORE PIT

8" VALVE

4' DIA UTILITY MANHOLE (EXISTING)
SSMH-4: TOP=2644.40'
INVERT IN=2637.65' (EXIST.)
INVERT OUT=2637.65' (SS-4)

43 LF 8" SANITARY GRAVITY SEWER
SS-4; PVC SDR21

4' DIA UTILITY MANHOLE
3 LF UTILITY MANHOLE WALL 4' DIA
SSMH-5: TOP=2645.34'
INVERT IN=2637.22' (SS-4)
INVERT OUT=2637.02' (SS-4)

4' DIA UTILITY MANHOLE (EXISTING)
3 LF UTILITY MANHOLE WALL 4' DIA

SSMH-2: TOP=2641.85'
EX. TOP=2639.92'
INVERT IN=2634.55' (EXIST.)
INVERT OUT=2634.47' (SS-2)

8" VALVE
15 LF 8" WATER LINE
PVC SDR21

95 LF 8" SANITARY GRAVITY SEWER
SS-3; PVC SDR21

4' DIA UTILITY MANHOLE (DOGHOUSE)
SSMH-3: TOP=2641.85'
EX. GROUND=2636.35'
INVERT IN=2632.54' (EXIST.)
INVERT OUT=2632.34' (SS-3)

ABANDON 102 LF 8" UTILITY PIPE

ABANDON 122 LF 8" UTILITY PIPE

411 LF 8" SANITARY GRAVITY SEWER
SS-4; PVC SDR21

NCDOT JUNCTION BOX

ABANDON UTILITY MANHOLE

ABANDON 450 LF 8" UTILITY PIPE

8" VALVE

RELOCATE WATER METER
26 LF WATER SERVICE LINE
REMOVE WATER METER

BEGIN CONSTRUCTION
-Y2- STA. 10+00

ABANDON 119 LF 8" UTILITY PIPE

REMOVE UTILITY MANHOLE

ABANDON 280 LF 8" UTILITY PIPE

225 LF BORE AND JACK OF 16"
273 LF 16" ENCASUREMENT PIPE
273 LF BORE AND JACK OF 16"
0.31" WALL THICKNESS

25' X 25' BORE PIT

127 LF 8" SANITARY GRAVITY SEWER
SS-5; PVC SDR21

8" X 8" TEE (WL-2)

20' X 20' BORE PIT

30 LF 16" ENCASUREMENT PIPE
0.31" WALL THICKNESS

ABANDON 220 LF 8" UTILITY PIPE

8" VALVE

147 LF 8" WATER LINE
WL-1; PVC SDR21

4' DIA UTILITY MANHOLE (DOGHOUSE)
2 LF UTILITY MANHOLE WALL 4' DIA

SSMH-9: TOP=2632.05'
INVERT IN=2624.49' (SS-5)
INVERT OUT=2624.29' (EXIST.)

FIRE HYDRANT
RELOCATE WATER METER
16 LF FIRE HYDRANT LEG
6" VALVE
8" X 6" TEE
REMOVE FIRE HYDRANT

WATER MARKER
UTILITY POST

(2) 8" VALVES
30 LF 8" WATER LINE
WL-5; PVC SDR21
8" X 8" TEE

2886 LF DIRECTIONAL DRILL (1) 2" HDPE
1443 LF TRACER WIRE
(2) POLYETHYLENE CONDUITS

ABANDON 209 LF 8" UTILITY PIPE

ABANDON UTILITY MANHOLE

8" VALVE

550 LF 8" WATER LINE
WL-3; PVC SDR21

NOTE:
THE ESTIMATED QUANTITY OF DUCTILE IRON WATER PIPE FITTINGS ON THIS PLAN SHEET IS 2600 POUNDS. THE ACTUAL QUANTITY AND TYPE OF FITTINGS WILL VARY BASED ON FIELD CONDITIONS.

MATCHLINE -L- STA. 325+00 SEE SHEET UC-6

REVISIONS

8/15/24 RM 147.07_HB-0002\Utilities\Engineering\UC\Proj\HB0002_ut_UC_psh_05.dgn
3/27/2024