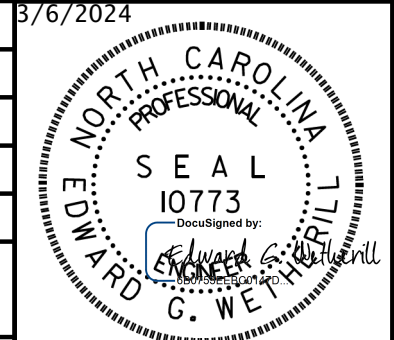


8/17/99

WETHERILL ENGINEERING
 1223 Jones Franklin Rd.
 Raleigh, N.C. 27606
 License No. F-0377
 Bus: 919 851 8077
 Fax: 919 851 8107

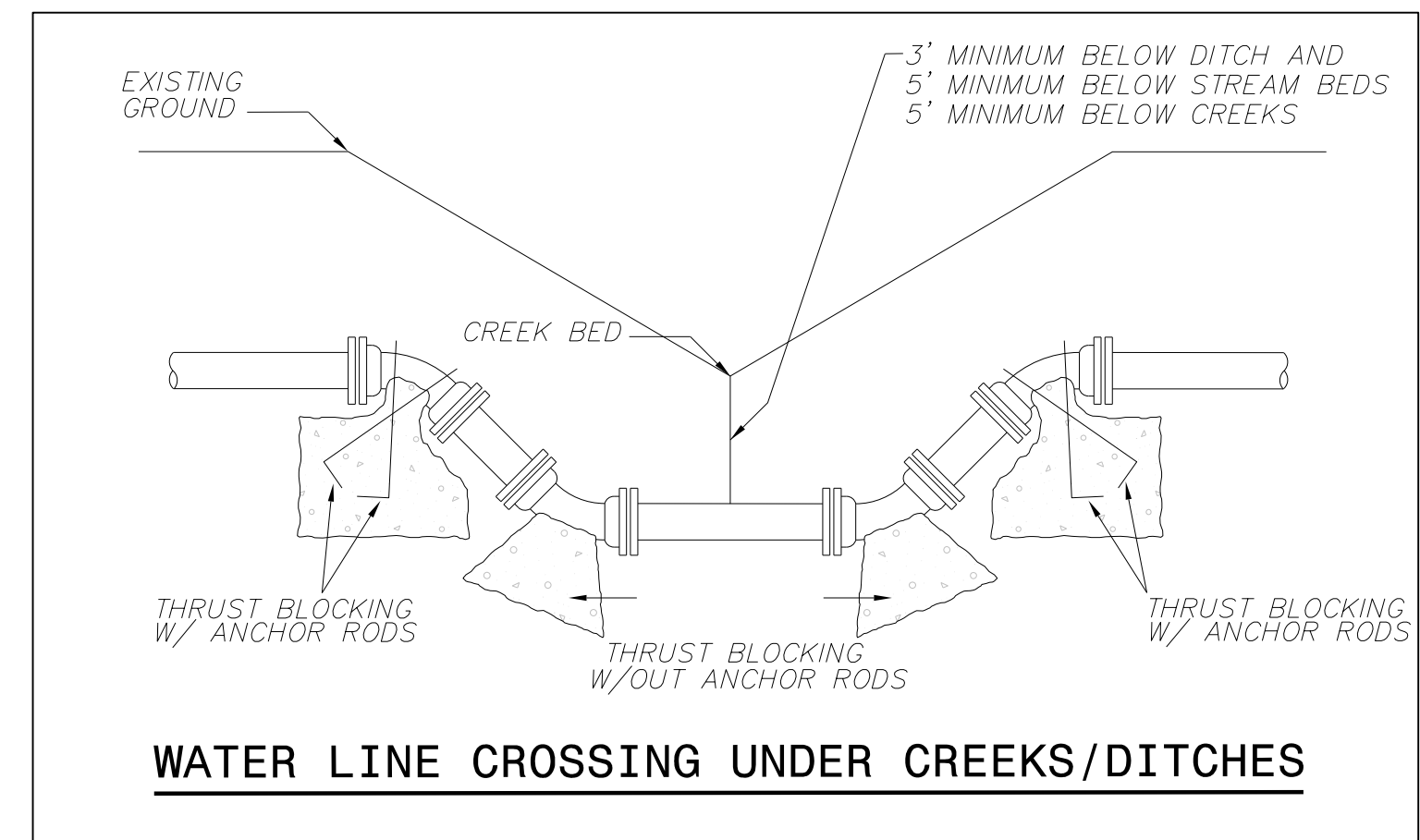
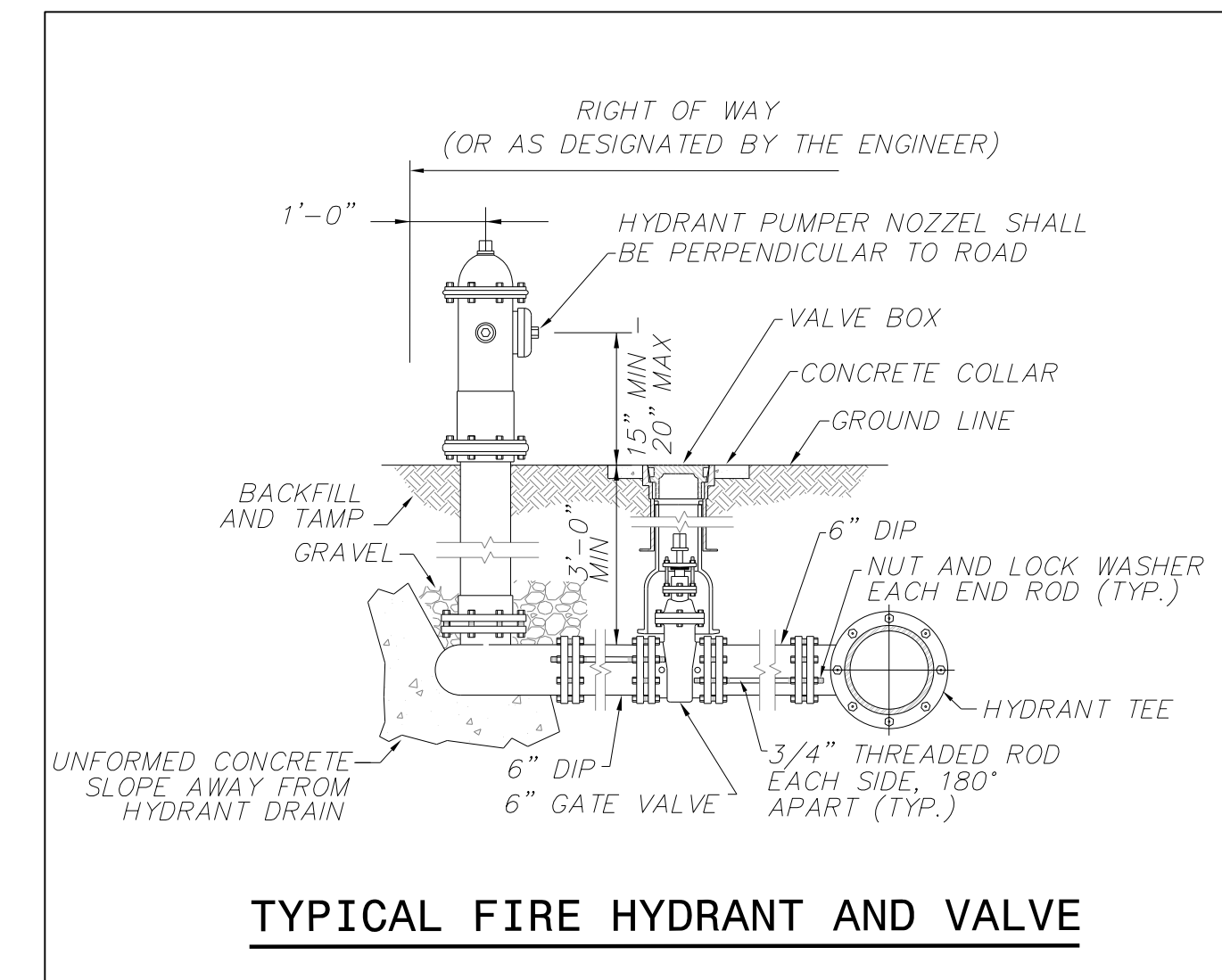
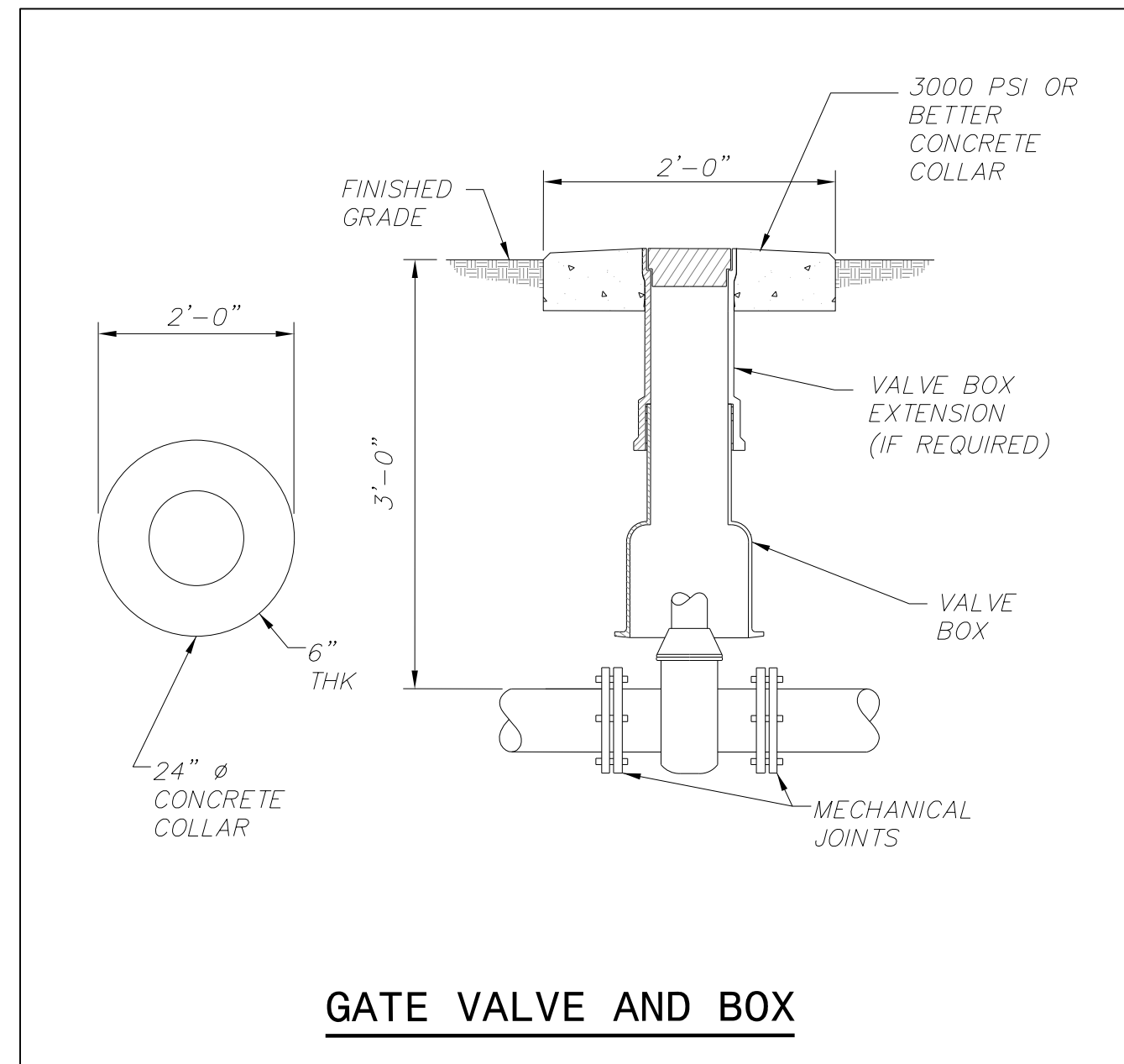
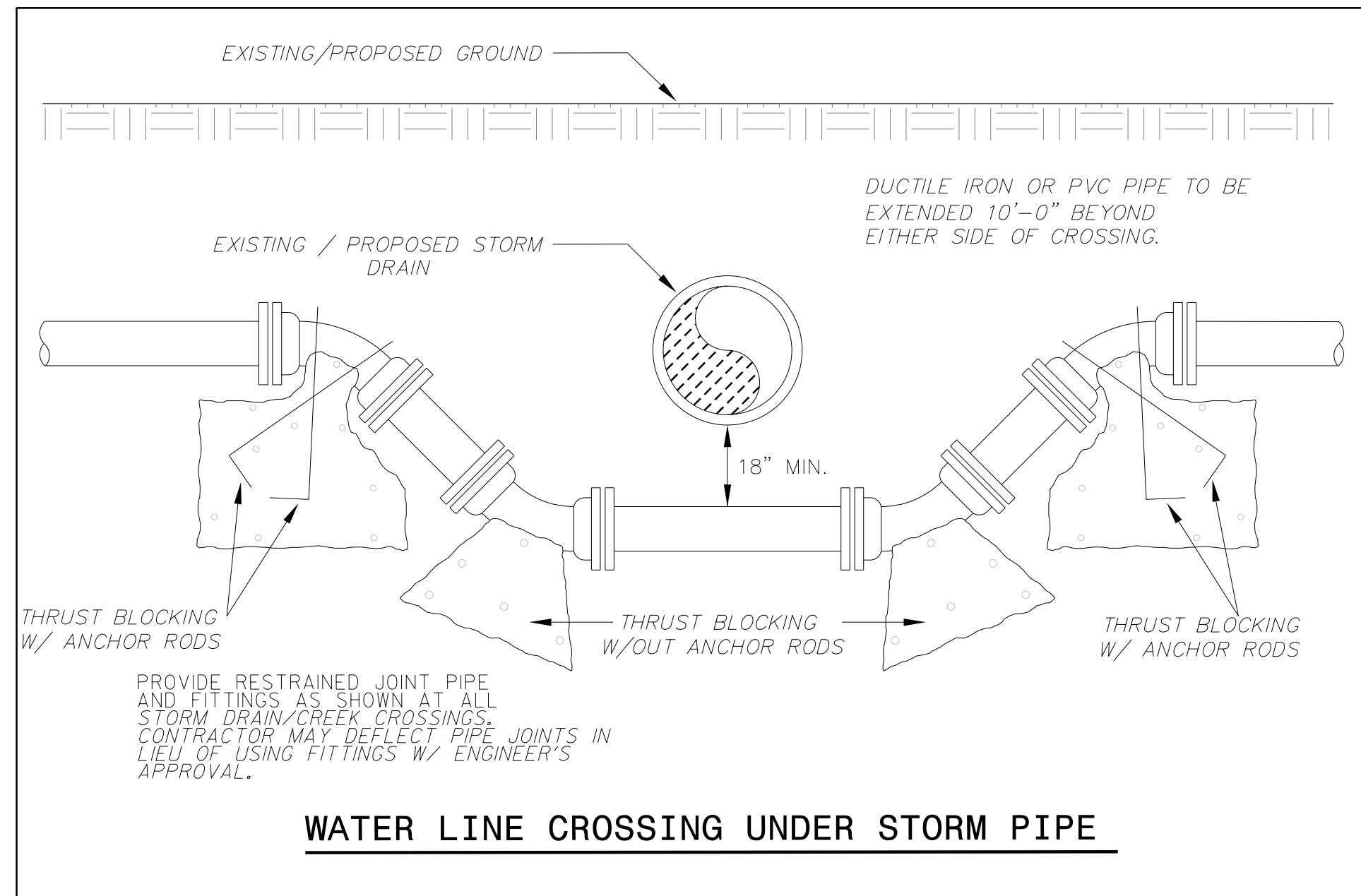
TRANSPORTATION PLANNING/DESIGN - BRIDGE/STRUCTURE DESIGN
 CIVIL/SITE DESIGN - GIS/GPS - SURVEY/SUE - UTILITIES - CONSTRUCTION OBSERVATION

PROJECT REFERENCE NO. HB-0002	SHEET NO. UC-3A
DESIGNED BY: PKP	3/6/2024
DRAWN BY: TWR	
CHECKED BY: PKP	
APPROVED BY: SLK	
REVISED:	
NORTH CAROLINA DEPARTMENT OF TRANSPORTATION	UTILITY CONSTRUCTION PLANS ONLY
UTILITIES ENGINEERING SEC. PHONE: (919) 707-6690 FAX: (919) 250-4151	



DOCUMENT NOT CONSIDERED FINAL UNLESS ALL SIGNATURES COMPLETED
UTILITY CONSTRUCTION

PROJECT TYPICAL DETAILS



ROD REQUIREMENTS	
SERVICE SIZE	NO. OF RODS
4"	2
6"	2
8"	4
12"	8

RESTRAINED TEE AND VALVE INSTALLATION

GENERAL NOTES

- ONCE INSTALLED AND TIGHT, THE STEEL RODS AND BOLTS SHALL BE COATED WITH 2 COATS OF BITUMINOUS BASE PAINT.
- CONCRETE SHALL NOT CONTACT BOLTS OR ENDS OF MECHANICAL FITTINGS.

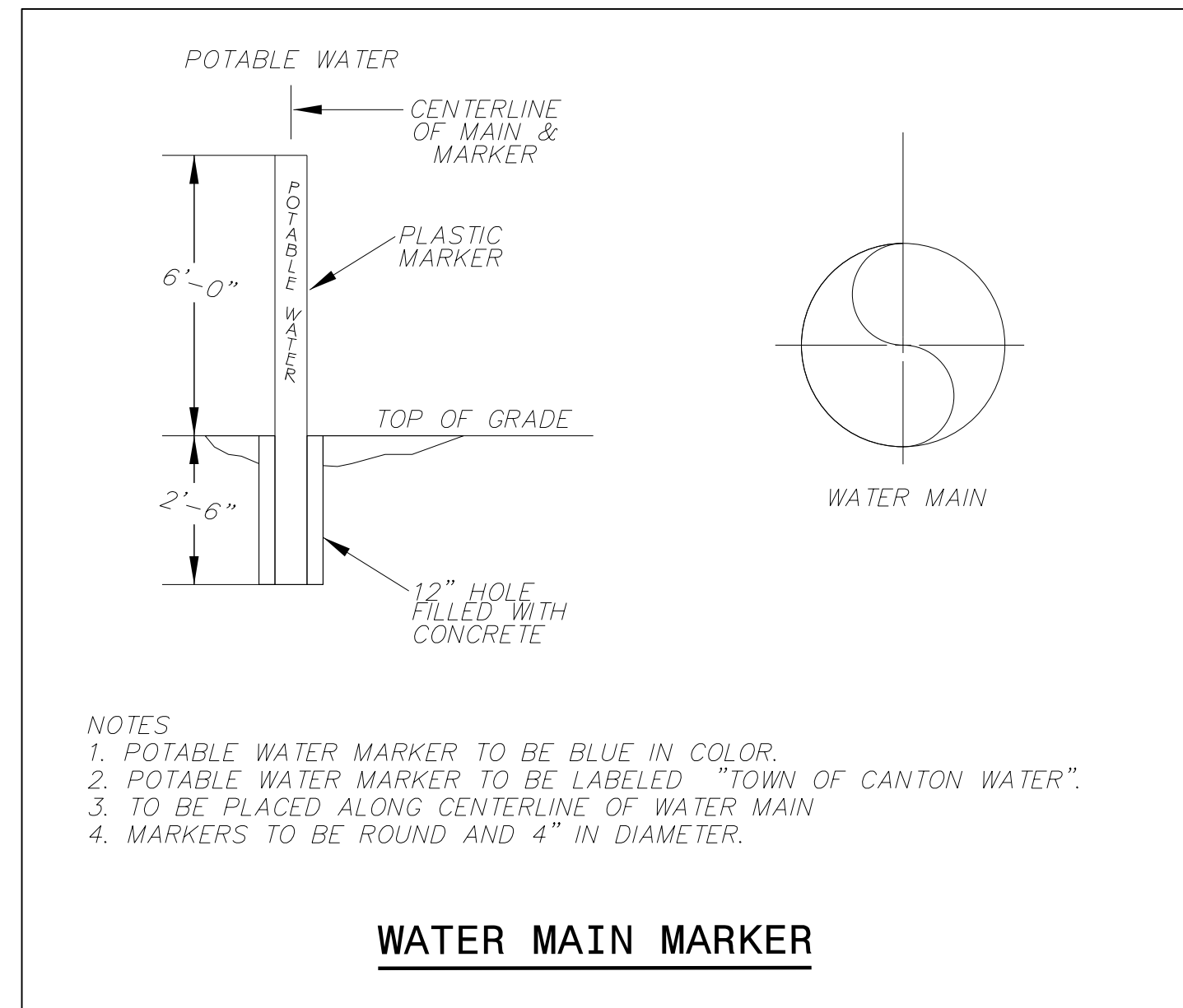
STANDARD TAPPING SLEEVE AND VALVE ASSEMBLY

SOLID CONCRETE OR BRICK BLOCKING SHALL BE USED AS FOOTING FOR DUCTILE IRON PIPE, PVC PIPE SHALL REQUIRE A 2500 PSI CONCRETE FOOTING.

NOTE: VALVES SHALL BE AMERICAN OR MUELLER, OPEN LEFT, TAPPING SLEEVE AND VALVE OR AS OTHERWISE SPECIFIED.

NOTES

- CONCRETE SHALL NOT CONTACT BOLTS OR ENDS OF MECHANICAL JOINT FITTINGS.



REVISIONS

8/16/2023
 11:58:11 AM
 8/16/2023 ut_uc_notes-details.dgn