

8.17.99

-L- CURVE DATA		-EBL- CURVE DATA		-Y2- CURVE DATA	
PI Sta 325+93.35	PIs Sta 336+40.47	PI Sta 22+13.97	PIs Sta 31+94.22	PI Sta 17+51.69	PI Sta 25+33.97
$\Delta = 29^\circ 51' 28.7''$ (RT)	$\Theta_s = 1^\circ 41' 15.0''$	$\Delta = 26^\circ 54' 47.0''$ (RT)	$\Theta_s = 2^\circ 15' 00.0''$	$\Delta = 12^\circ 14' 45.1''$ (RT)	$\Delta = 6^\circ 40' 00.0''$ (RT)
D = 1' 30' 00.0"	Ls = 225.00'	D = 1' 30' 00.0"	Ls = 300.00'	D = 2' 07' 30.0"	D = 1' 45' 00.0"
L = 1,990.53'	LT = 150.01'	L = 1,794.20'	LT = 200.02'	L = 576.28'	L = 380.95'
T = 1,018.42'	ST = 75.01'	T = 913.97'	ST = 100.01'	T = 289.24'	T = 190.69'
R = 3,819.72'		R = 3,819.72'		R = 2,696.27'	R = 3,274.04'
SE = .06		SE = .06			
DS = 75 MPH		DS = 75 MPH			

PROJECT REFERENCE NO. **HB-0002** SHEET NO. **EC-11/CONST.6**

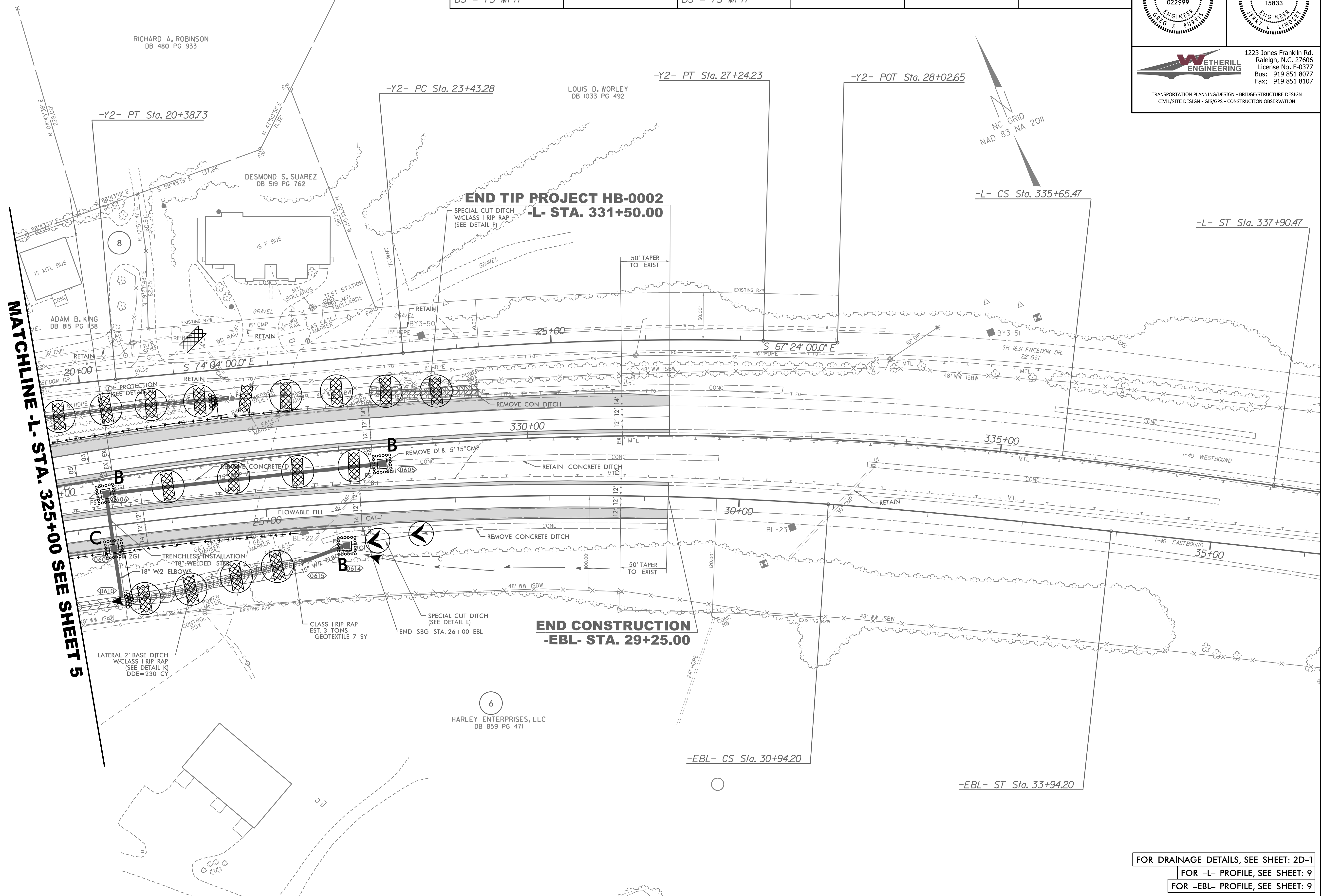
RW SHEET NO.

ROADWAY DESIGN ENGINEER	HYDRAULICS ENGINEER

WETHERILL ENGINEERING

1223 Jones Franklin Rd.
Raleigh, N.C. 27606
License No. F-0377
Bus: 919 851 8077
Fax: 919 851 8107

TRANSPORTATION PLANNING/DESIGN - BRIDGE/STRUCTURE DESIGN
CIVIL/SITE DESIGN - GIS/GPS - CONSTRUCTION OBSERVATION



MATCHLINE -L- STA. 325+00 SEE SHEET 5

REVISIONS

2/6/2024 10:45 AM HB-0002-EC-11.dgn

FOR DRAINAGE DETAILS, SEE SHEET: 2D-1
 FOR -L- PROFILE, SEE SHEET: 9
 FOR -EBL- PROFILE, SEE SHEET: 9