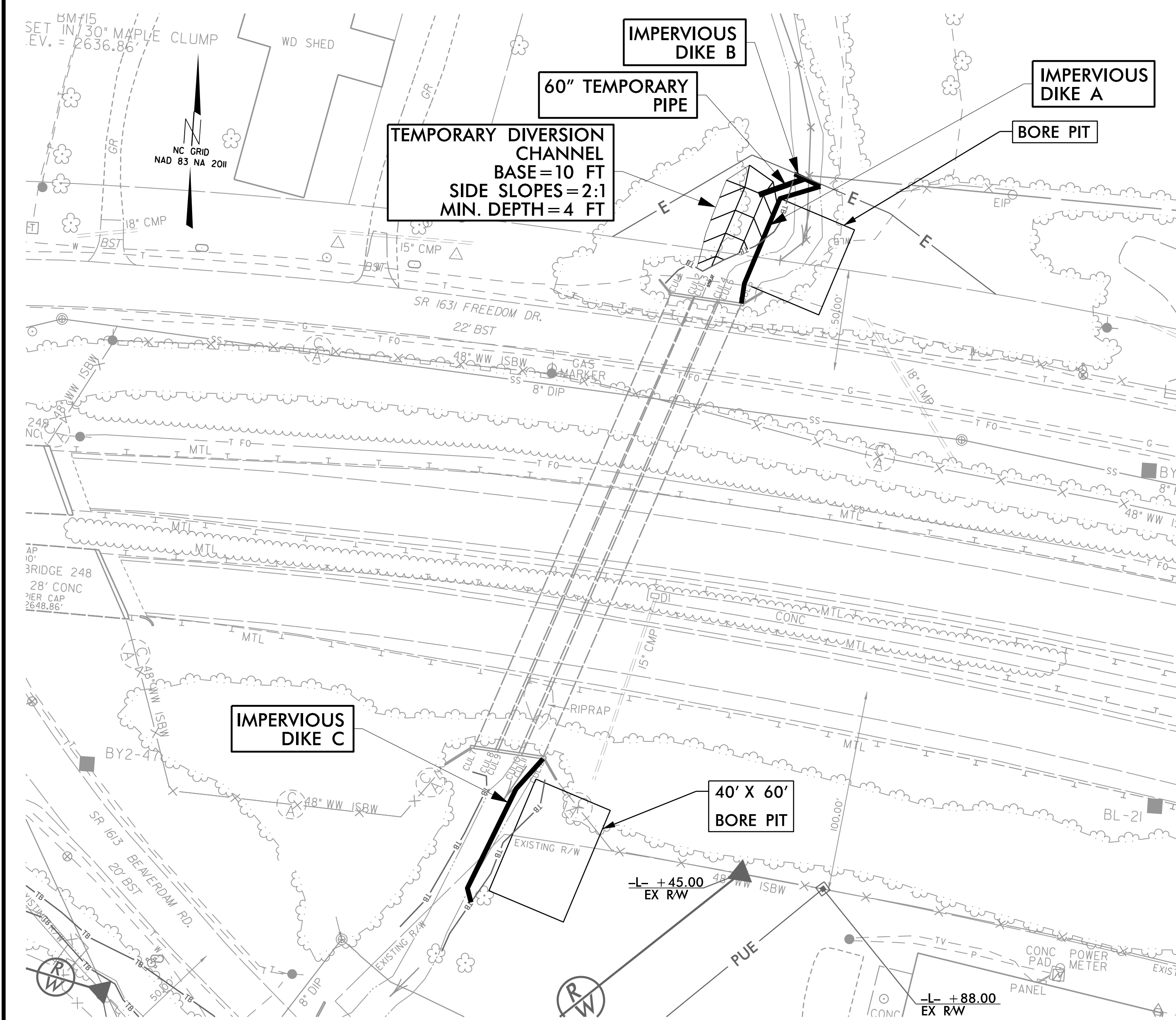


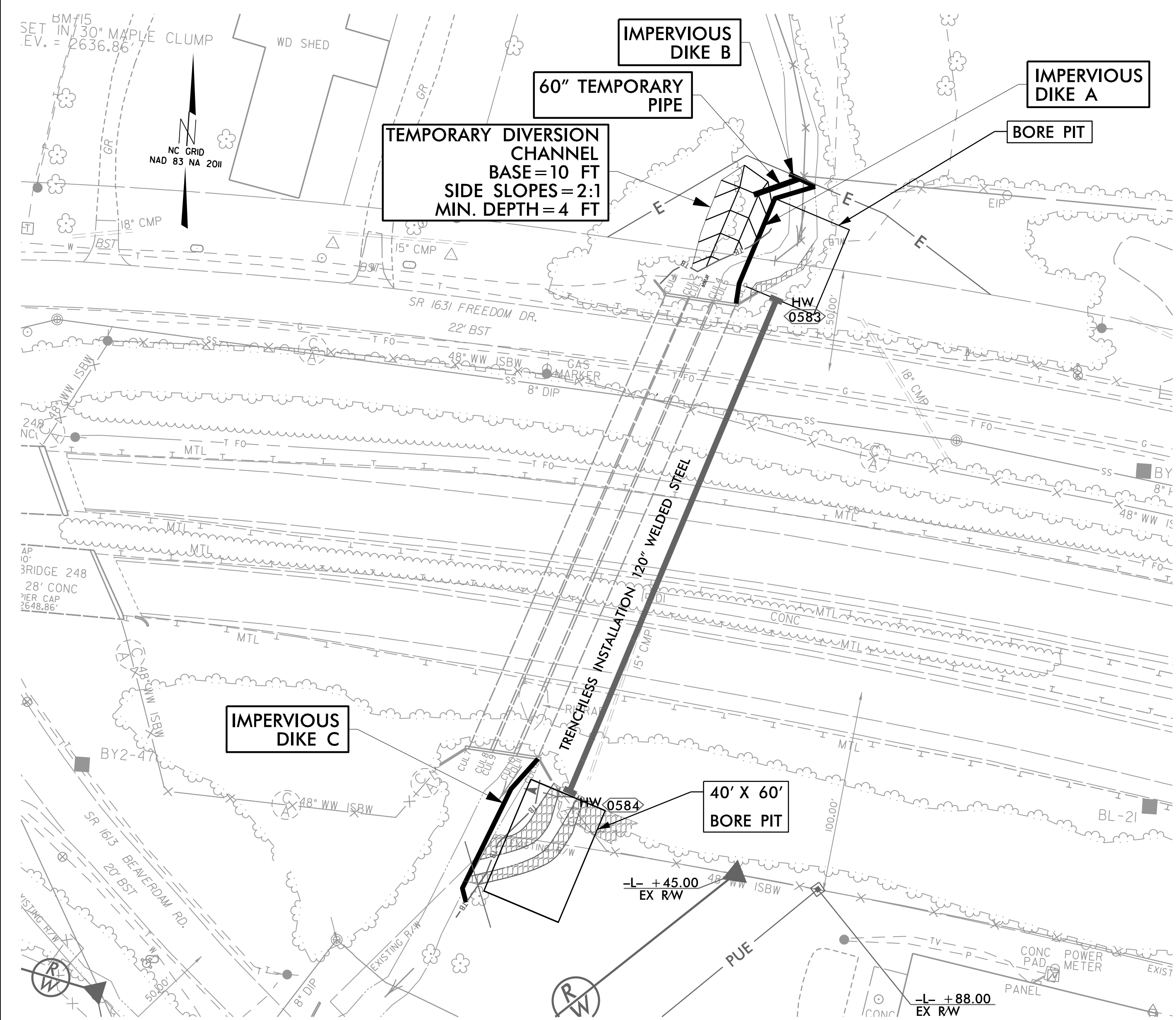
PROJECT REFERENCE NO.	SHEET NO.
HB-0002	EC-5C/CONST.5
RW SHEET NO.	
ROADWAY DESIGN ENGINEER	HYDRAULICS ENGINEER

STA -L- 320+00 PIPE CONSTRUCTION SEQUENCE

PHASE I



PHASE II



1. INSTALL SPECIAL STILLING BASIN UPSTREAM.
2. INSTALL TEMPORARY DIVERSION CHANNEL. INSTALL IMPERVIOUS DIKE A AND TEMPORARY 60" PIPE UPSTREAM.
3. INSTALL IMPERVIOUS DIKES B AND C.
4. INSTALL BORE PITS UPSTREAM AND DOWNSTREAM.

1. INSTALL 120" WELDED STEEL PIPE VIA TRENCHLESS INSTALLATION, REMOVING EXISTING DRAINAGE AS NEEDED.
2. COMPLETE DOWNSTREAM CHANNEL IMPROVEMENTS, INSTALL HEADWALLS AND RIPRAP.
3. RESTORE UPSTREAM CHANNEL.
4. REMOVE IMPERVIOUS DIKES.
5. REMOVE TEMPORARY DRAINAGE AND SPECIAL STILLING BASIN.
6. FILL IN TEMPORARY DIVERSION CHANNEL.
7. COMPLETE ROADWAY.