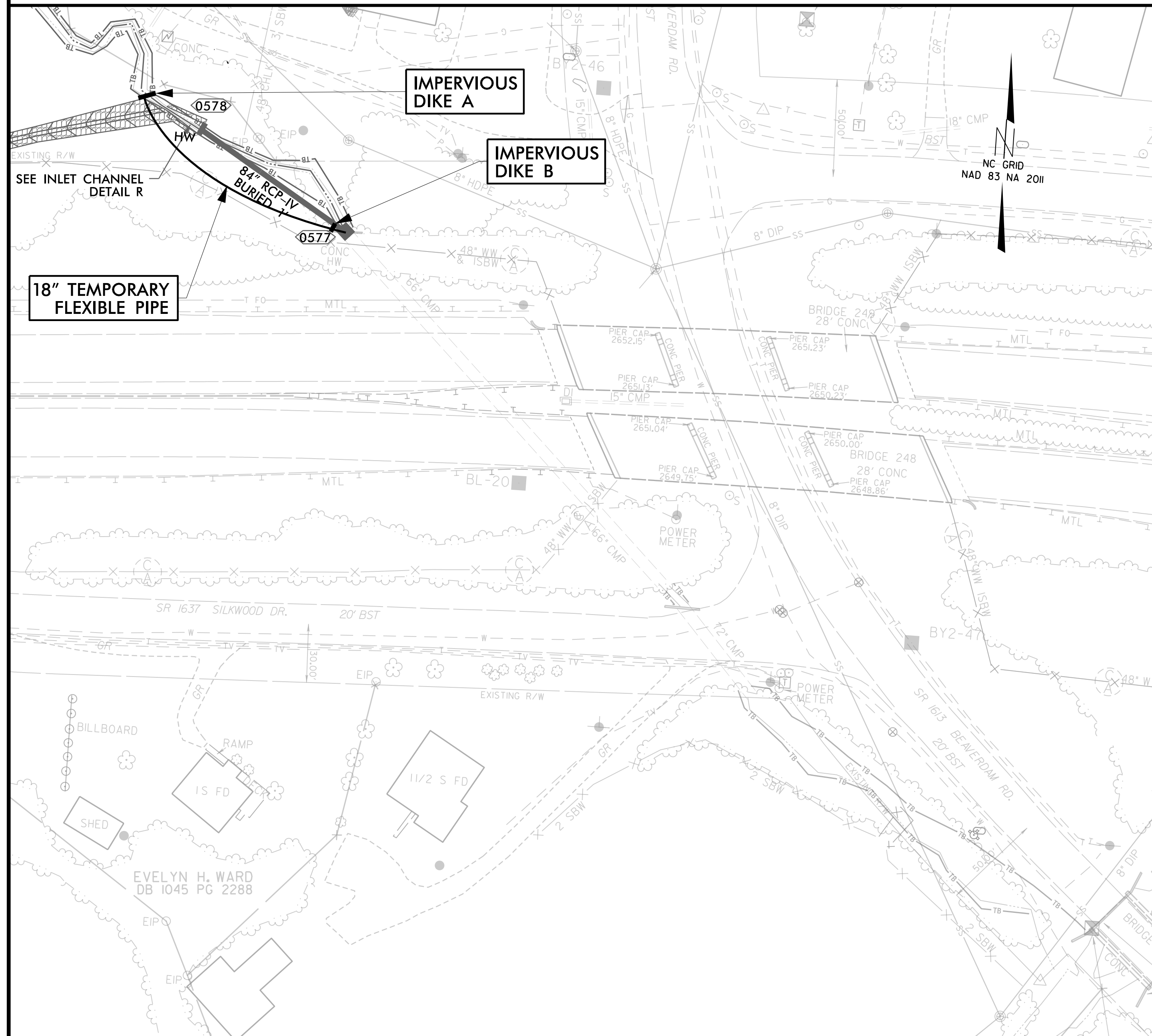


PROJECT REFERENCE NO. <i>HB-0002</i>	SHEET NO. <i>EC-5A/CONST.5</i>
RW SHEET NO.	
ROADWAY DESIGN ENGINEER	HYDRAULICS ENGINEER

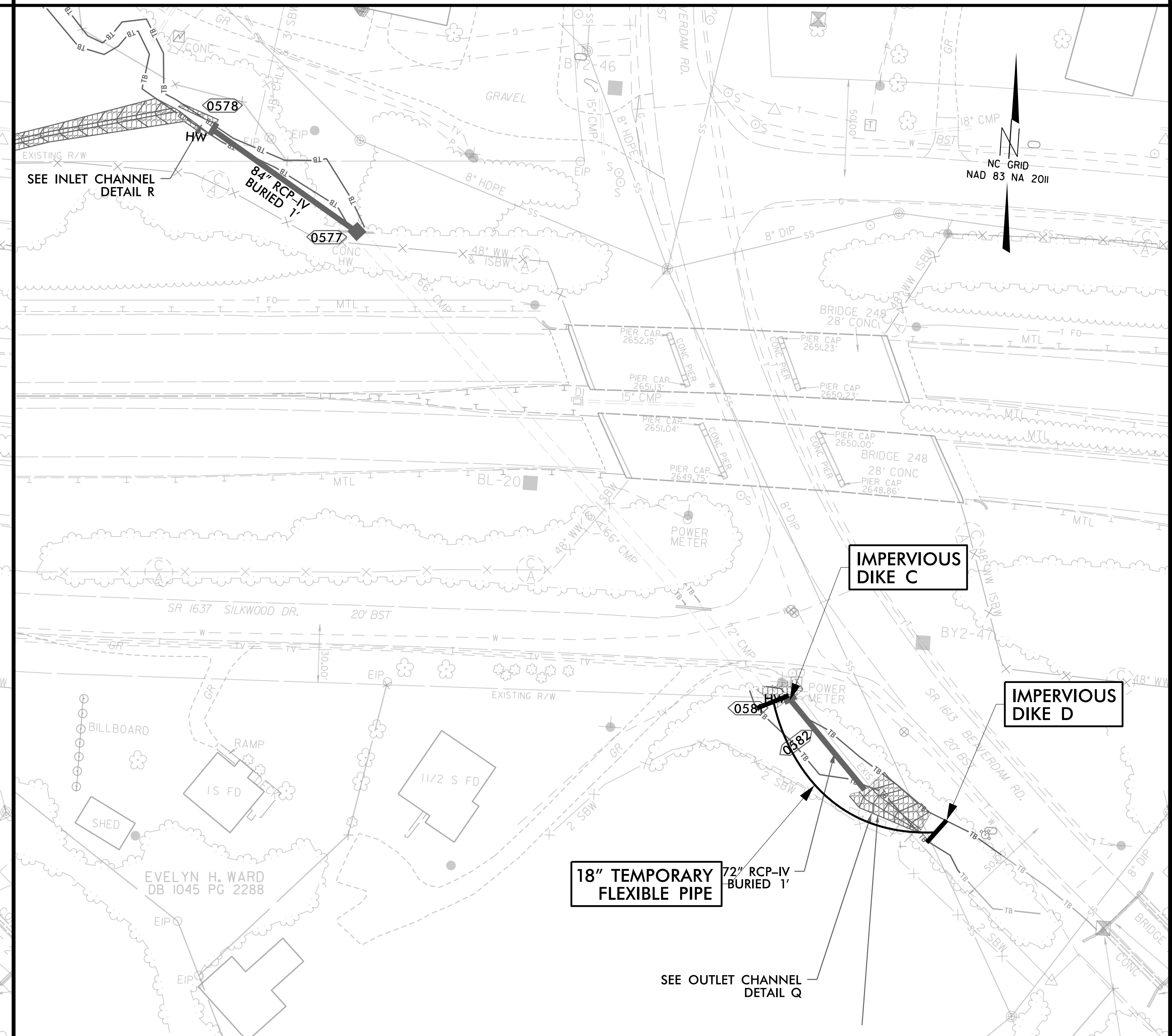
STA -L- 315 + 00 PIPE CONSTRUCTION SEQUENCE

PHASE I



1. UTILIZE SPECIAL STILLING BASIN(S) AS NECESSARY DURING PHASE I PIPE INSTALLATION
2. INSTALL IMPERVIOUS DIKES A AND B. UTILIZE 18" TEMPORARY PIPE TO MAINTAIN FLOW
3. INSTALL 84" RCP-IV, JUNCTION BOX AND INLET CHANNEL
4. REMOVE 18" TEMPORARY PIPE, IMPERVIOUS DIKES A AND B
5. REMOVE SPECIAL STILLING BASIN(S)

PHASE II



1. UTILIZE SPECIAL STILLING BASIN(S) AS NECESSARY DURING PHASE II PIPE INSTALLATION
2. INSTALL IMPERVIOUS DIKES C AND D
3. INSTALL 18" TEMPORARY PIPE TO MAINTAIN FLOW
4. INSTALL 72" RCP-IV AND OUTLET CHANNEL
5. REMOVE 18" TEMPORARY PIPE, IMPERVIOUS DIKES C AND D
6. REMOVE SPECIAL STILLING BASIN(S)