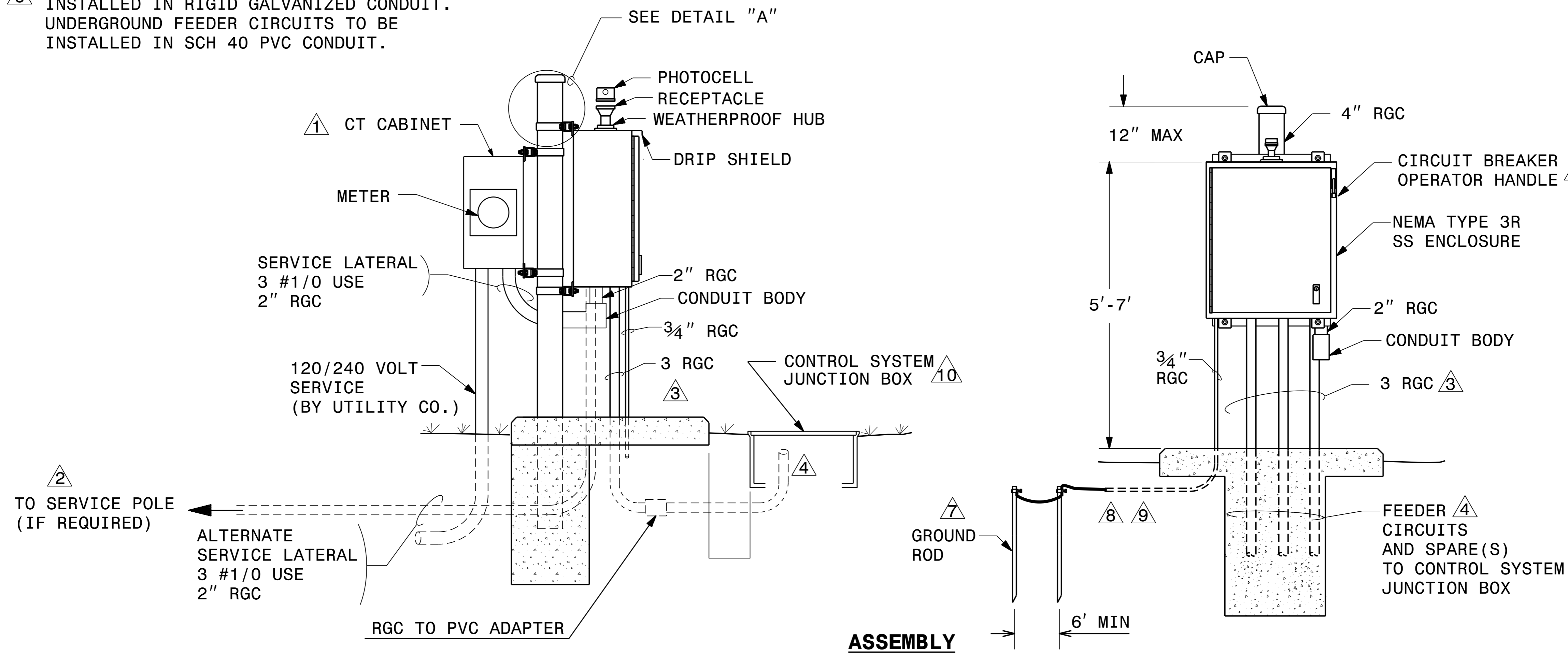
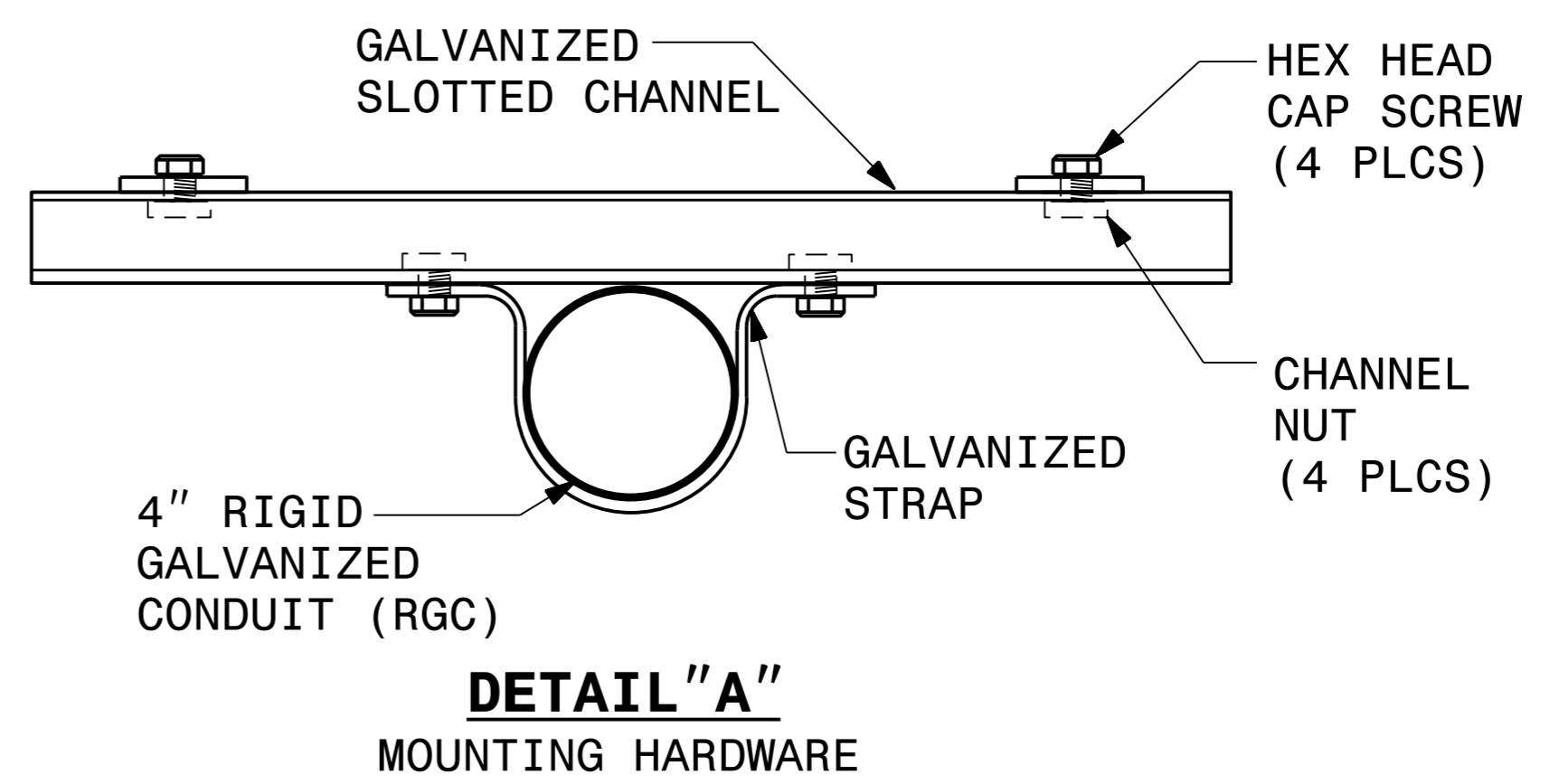


**DOCUMENT NOT CONSIDERED FINAL
UNLESS ALL SIGNATURES COMPLETED**

NOTES

- 1 CURRENT TRANSFORMER (CT) CABINET AND METER MAY BE MOUNTED ON SERVICE POLE OR BACK OF CONTROL ENCLOSURE.
- 2 SEE SECTION 1407 OF THE STANDARD SPECIFICATIONS FOR SERVICE POLE AND SERVICE LATERAL.
- 3 SEE PLANS FOR SIZE OF CONDUITS AND/OR ELECTRICAL DUCT.
- 4 STUB FEEDER CIRCUIT CONDUITS INTO JUNCTION BOX. CAP UNUSED CONDUITS. FEEDER CIRCUITS MUST BE MINIMUM 30" BELOW GRADE
- 5 SEE SECTION 1411 OF THE STANDARD SPECIFICATIONS FOR JUNCTION BOX INSTALLATION.
- 6 ALL ABOVE GROUND CIRCUITRY TO BE INSTALLED IN RIGID GALVANIZED CONDUIT. UNDERGROUND FEEDER CIRCUITS TO BE INSTALLED IN SCH 40 PVC CONDUIT.
- 7 TOP OF GROUND ROD(S) SHALL BE NO MORE THAN FOUR INCHES BELOW GRADE TO ALLOW FOR EASE OF INSPECTION BY DEPARTMENT OF INSURANCE, OFFICE OF STATE FIRE MARSHAL PERSONNEL.
- 8 INSTALL A CONDUIT GROUND CHOKE AND BOND THE EQUIPMENT GROUNDING CONDUCTOR TO THE END OF THE 3/4" CONDUIT UNDERGROUND PER NEC ARTICLE 250.64E.
- 9 GROUNDING ELECTRODE CONDUCTOR 3/4" CONDUIT SHALL NOT TERMINATE BELOW THE CONCRETE FOUNDATION PAD.
- 10 SEE STANDARD DRAWING 1411.01 FOR CONTROL SYSTEM JUNCTION BOX REQUIREMENTS.
- 11 TOP OF OPERATOR HANDLE SHALL BE NO HIGHER THAN 6'-7" FROM TOP OF FOUNDATION.



Rev.	Date	Description	Approved
2			
1			

**NORTH CAROLINA
DEPARTMENT OF TRANSPORTATION
ROADWAY DESIGN LIGHTING/ELECTRICAL SECTION**

CONTROL PANEL DETAILS

**SHEET 2 OF 3
ASSEMBLY**

HAYWOOD COUNTY

Drawn By: RGH	Approved By:	Dwg No.:
------------------	--------------	----------

08-DEC-2023 12:25 P:\Projects\Lighting\Plan SP Est\Plan\HB0002.LE.PSH.E5.dgn
rghall At RD-329781L