

6 QUANTITY = 502 SF
 TEMPORARY SHORING
 FROM STA. 315+12 +/- -DET-EBL-,
 45.5' RT OF CL
 TO STA. 316+01 +/- -DET-EBL-,
 48.2' RT OF CL

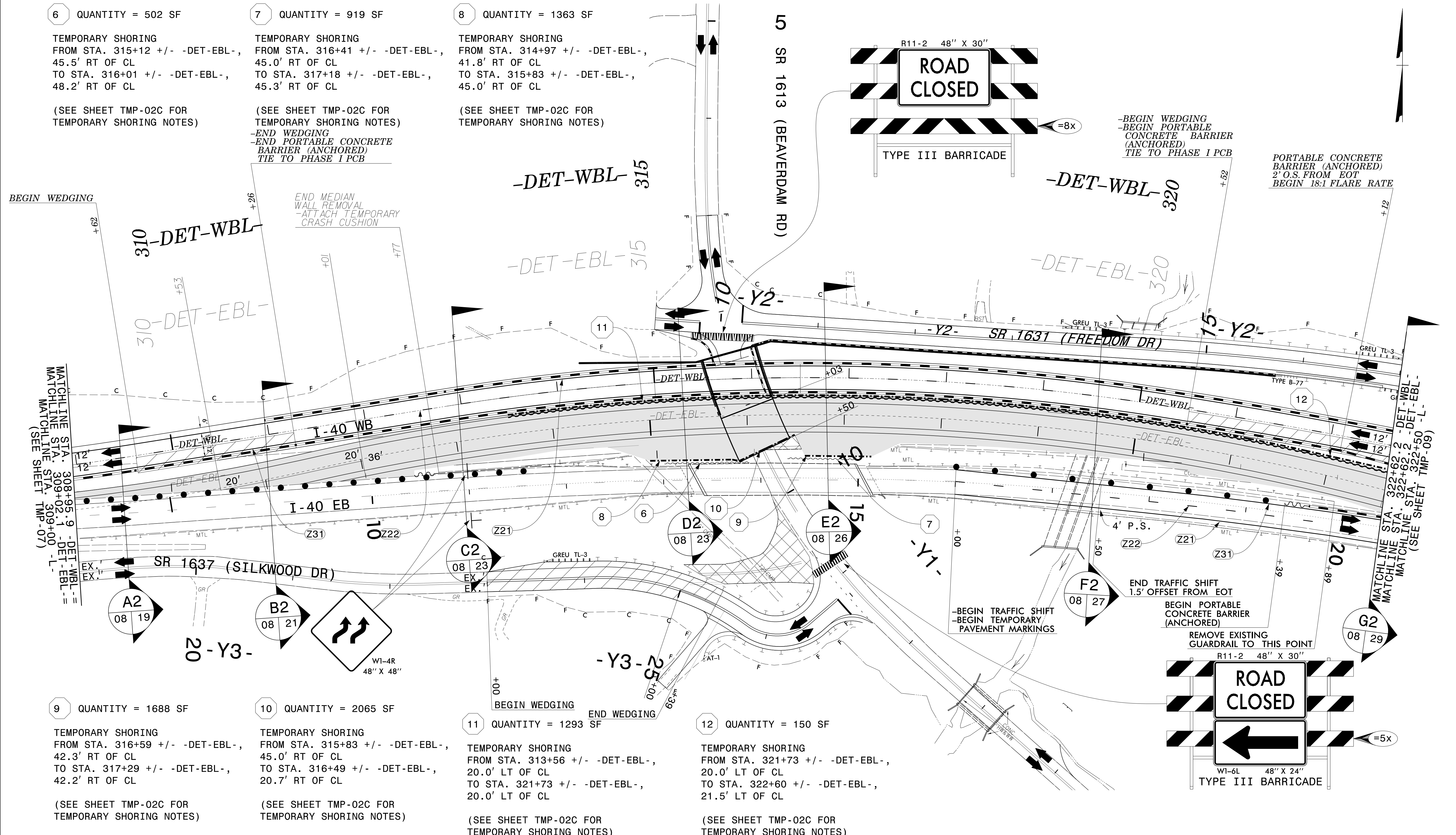
(SEE SHEET TMP-02C FOR
 TEMPORARY SHORING NOTES)

7 QUANTITY = 919 SF
 TEMPORARY SHORING
 FROM STA. 316+41 +/- -DET-EBL-,
 45.0' RT OF CL
 TO STA. 317+18 +/- -DET-EBL-,
 45.3' RT OF CL

(SEE SHEET TMP-02C FOR
 TEMPORARY SHORING NOTES)

8 QUANTITY = 1363 SF
 TEMPORARY SHORING
 FROM STA. 314+97 +/- -DET-EBL-,
 41.8' RT OF CL
 TO STA. 315+83 +/- -DET-EBL-,
 45.0' RT OF CL

(SEE SHEET TMP-02C FOR
 TEMPORARY SHORING NOTES)



9 QUANTITY = 1688 SF
 TEMPORARY SHORING
 FROM STA. 316+59 +/- -DET-EBL-,
 42.3' RT OF CL
 TO STA. 317+29 +/- -DET-EBL-,
 42.2' RT OF CL

(SEE SHEET TMP-02C FOR
 TEMPORARY SHORING NOTES)

10 QUANTITY = 2065 SF
 TEMPORARY SHORING
 FROM STA. 315+83 +/- -DET-EBL-,
 45.0' RT OF CL
 TO STA. 316+49 +/- -DET-EBL-,
 20.7' RT OF CL

(SEE SHEET TMP-02C FOR
 TEMPORARY SHORING NOTES)

11 QUANTITY = 1293 SF
 TEMPORARY SHORING
 FROM STA. 313+56 +/- -DET-EBL-,
 20.0' LT OF CL
 TO STA. 321+73 +/- -DET-EBL-,
 20.0' LT OF CL

(SEE SHEET TMP-02C FOR
 TEMPORARY SHORING NOTES)

12 QUANTITY = 150 SF
 TEMPORARY SHORING
 FROM STA. 321+73 +/- -DET-EBL-,
 20.0' LT OF CL
 TO STA. 322+60 +/- -DET-EBL-,
 21.5' LT OF CL

(SEE SHEET TMP-02C FOR
 TEMPORARY SHORING NOTES)

- NOTES:
- SEE FINAL PAVEMENT MARKING PLAN FOR INFORMATION RELATED TO -Y1-, -Y2-, AND -Y3-.
 - ALL DATA INCLUDING STATIONS, OFFSETS, ETC. HAVE BEEN DETERMINED BY THE NCDOT GEOTECHNICAL UNIT.

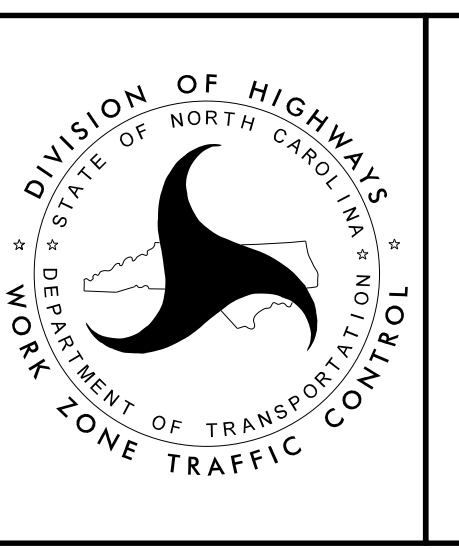
ETHERILL ENGINEERING
 1223 Jones Franklin Rd.
 Raleigh, N.C. 27606
 License No. F-0377
 Bus: 919 851 8077
 Fax: 919 851 8107

TRANSPORTATION PLANNING/DESIGN - BRIDGE/STRUCTURE DESIGN
 CIVIL/SITE DESIGN - GIS/GPS - CONSTRUCTION OBSERVATION

APPROVED: *Greg S. Purvis*
 DATE: 5/13/2024

NORTH CAROLINA PROFESSIONAL SEAL
 22999
 ENGINEER
 GREG S. PURVIS

**DOCUMENT NOT CONSIDERED FINAL
 UNLESS ALL SIGNATURES COMPLETED**



PHASE II DETAIL

5/13/2024
 \\net-fs01\projects\2021\2147.07_HB-0002\Traffic\Traffic\Pre-Let\Plan\WZTC_AR\HB-0002_TMP-08_Phil.dgn
 User: AHayes