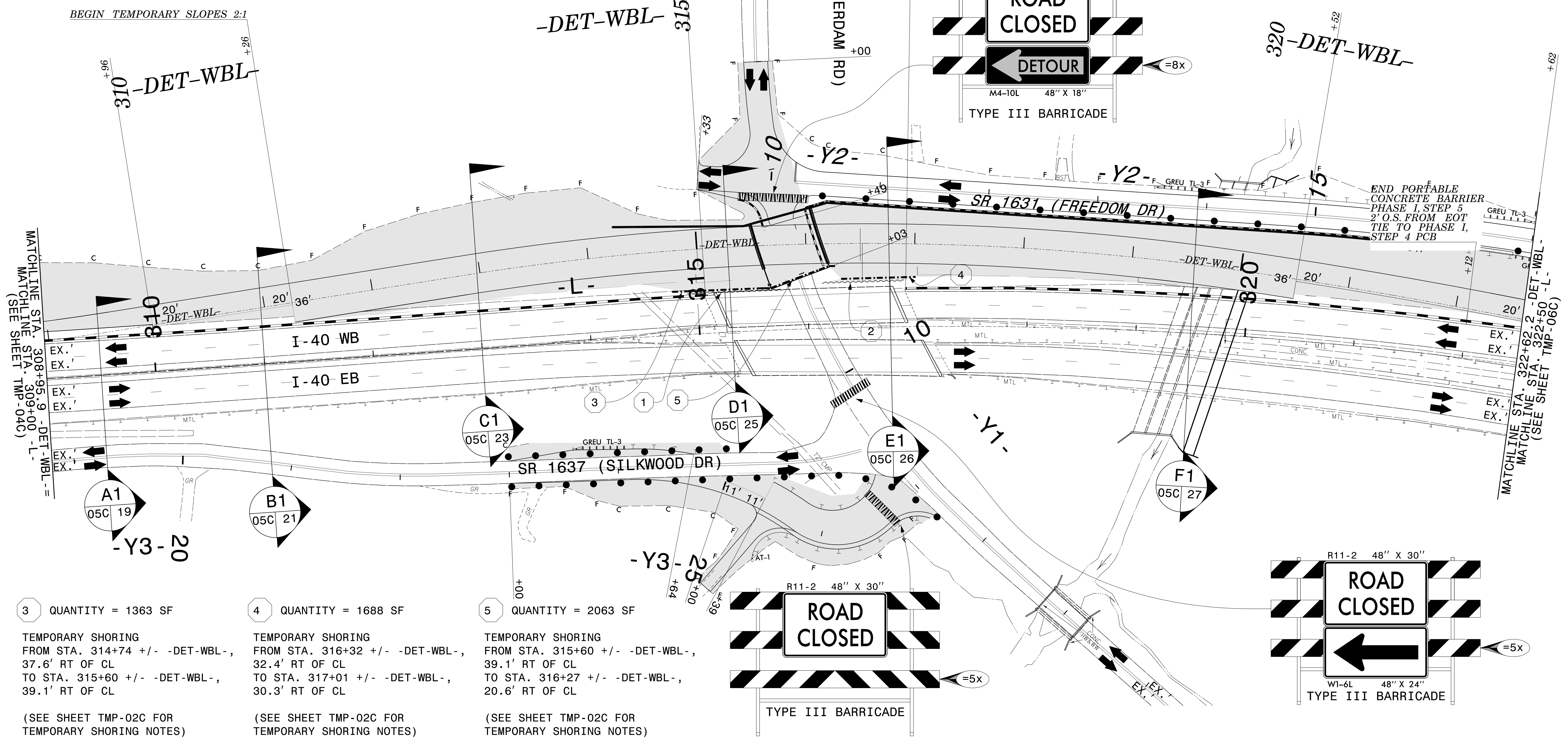


<p>1 QUANTITY = 502 SF</p> <p>TEMPORARY SHORING FROM STA. 314+88 +/- -DET-WBL-, 40' RT OF CL TO STA. 315+60 +/- -DET-WBL-, 39.1' RT OF CL</p> <p>(SEE SHEET TMP-02C FOR TEMPORARY SHORING NOTES)</p>	<p>2 QUANTITY = 919 SF</p> <p>TEMPORARY SHORING FROM STA. 316+14 +/- -DET-WBL-, 35.7' RT OF CL TO STA. 316+90 +/- -DET-WBL-, 33.7' RT OF CL</p> <p>(SEE SHEET TMP-02C FOR TEMPORARY SHORING NOTES)</p>
--	--



<p>3 QUANTITY = 1363 SF</p> <p>TEMPORARY SHORING FROM STA. 314+74 +/- -DET-WBL-, 37.6' RT OF CL TO STA. 315+60 +/- -DET-WBL-, 39.1' RT OF CL</p> <p>(SEE SHEET TMP-02C FOR TEMPORARY SHORING NOTES)</p>	<p>4 QUANTITY = 1688 SF</p> <p>TEMPORARY SHORING FROM STA. 316+32 +/- -DET-WBL-, 32.4' RT OF CL TO STA. 317+01 +/- -DET-WBL-, 30.3' RT OF CL</p> <p>(SEE SHEET TMP-02C FOR TEMPORARY SHORING NOTES)</p>	<p>5 QUANTITY = 2063 SF</p> <p>TEMPORARY SHORING FROM STA. 315+60 +/- -DET-WBL-, 39.1' RT OF CL TO STA. 316+27 +/- -DET-WBL-, 20.6' RT OF CL</p> <p>(SEE SHEET TMP-02C FOR TEMPORARY SHORING NOTES)</p>
---	---	---

NOTES:

- SEE FINAL PAVEMENT MARKING PLAN FOR INFORMATION RELATED TO -Y2-.
- ALL DATA INCLUDING STATIONS, OFFSETS, ETC. HAVE BEEN DETERMINED BY THE NCDOT GEOTECHNICAL UNIT.

ETHERILL ENGINEERING

1223 Jones Franklin Rd.
Raleigh, N.C. 27606
License No. F-0377
Bus: 919 851 8077
Fax: 919 851 8107

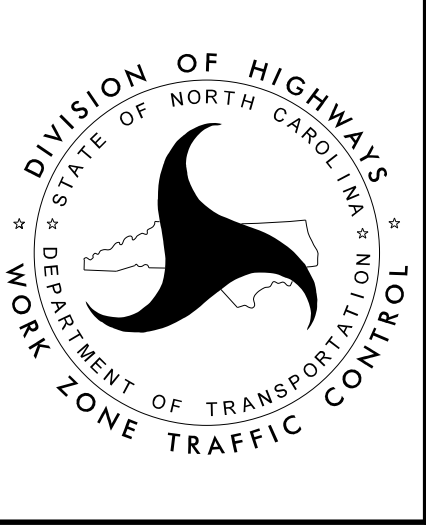
TRANSPORTATION PLANNING/DESIGN - BRIDGE/STRUCTURE DESIGN
CIVIL/SITE DESIGN - GIS/GPS - CONSTRUCTION OBSERVATION

APPROVED: *Greg S. Purvis*

DATE: 3/26/2024

NORTH CAROLINA PROFESSIONAL SEAL
ENGINEER
GREG S. PURVIS

**DOCUMENT NOT CONSIDERED FINAL
UNLESS ALL SIGNATURES COMPLETED**



PHASE I, STEP 5 DETAIL

3/26/2024 \\wei-fs01\projects\2021\2147.07_HB-0002\Traffic\Traffic\Pre-Let\Plan\WZTC_AR\HB-0002_TMP-05C_Phl.dgn User:AHayes